

ShatterGuard™ : Open Appearance with Polycarbonate Protection

Features

Lamp

- Designed for:
 - 2 horizontal Twin Tube 13 watt: RR90721.
 - 2 horizontal Quad 26 watt: RR90722.
- 2 pin GX23 base: RR90721.
- 2 pin G24d-3 base: RR90722.
- See Option -43 for lower wattage.

Ballast

- Thermally protected, encased and potted standard.
- High power factor standard.
- Single circuit wiring. Optional two-circuit wiring. (See Option -84)
- 120 volt standard or see optional voltages.
- Dimming optional for RR90722. (See Option -39)
- Electronic optional for RR90722. (See Option -96)
- Visible and easily serviced in all ceilings.

Fuse

- Available as Option -FS (single) or -FD (double).

Reflector / ShatterGuard

- Clear specular Alzak® aluminum upper reflector.
- ShatterGuard 1/8" clear polycarbonate lens below lamps.
- Self-flanged low iridescence specular Alzak aluminum lower reflector.

- Optional SofTex softly etched Clear, Dune, Champagne Gold or Wheat lower reflectors available.
- Optional White, Black Specular Alzak or OptiGroove lower reflectors available.

Housing

- Acrylic enameled aluminum.
- Cool: Dissipates heat across entire surface area. Ventilated.
- Rustproof. Exceeds 1000 hour ASTM 5% salt spray test.
- Entire luminaire serviced through removable reflectors.
- Prewired outlet box, 14GA (NEC) galvanized steel, UL listed. Accessible through fixture opening.
- Built-in plaster frame.

Installation

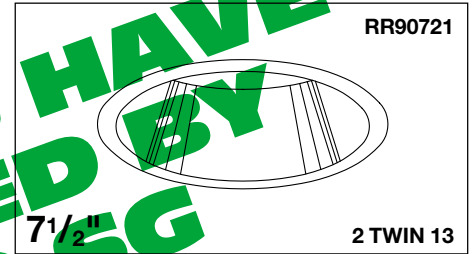
- 27" hanger bars supplied (2).
- Fully adjustable universal mounting brackets supplied (2).
- Recesses indoor or outdoor in covered locations.

UL, C-UL (Canada) Listings

- Wet, damp or dry locations, covered ceilings.
- Through-branch circuit conductors (6 #12).

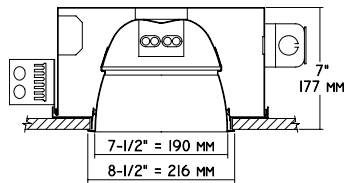
Three Year Limited Warranty

- Complete standard fixture.

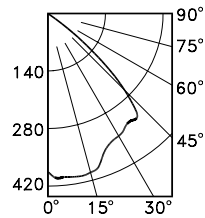
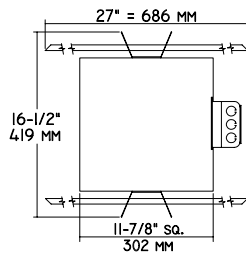
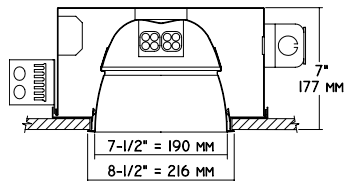


Performance at a Glance

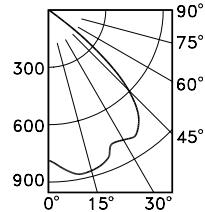
RR90721



RR90722



RR90721 S/MH 1.3



RR90722 S/MH 1.5

Cone of Light*

Ft.	FC	Dia.
6	10.5	7.3
8	5.9	9.8
10	3.8	12.2
12	2.6	14.6
14	1.9	17.1
16	1.5	19.5

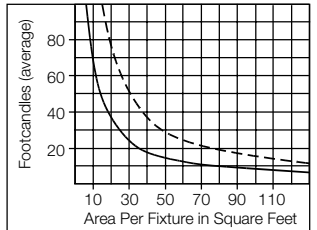
RR90721

Cone of Light*

Ft.	FC	Dia.
6	21.8	7.8
8	12.2	10.4
10	7.8	13.0
12	5.4	15.6
14	4.0	18.2
16	3.1	20.8

RR90722

Multiple Fixture FC Calculator **



RR90721 ——— RR90722 - - - -

Cone of Light Key

- Ft.** Distance from fixture
 - FC** Footcandles (average)
 - Dia.** Circle of light at 50% of FC
- * Dia. (in ft.) shown is where FC value is half the FC at nadir.
** Based on RCR2; ceiling 70%; wall 50%; floor 20%. Use S/MH shown for each fixture.
Distribution curves and S/MH data shown are 90° to lamp axis.

THE KIRLIN COMPANY

3401 EAST JEFFERSON AVENUE • DETROIT, MICHIGAN 48207-4232
(313) 259-6400 • Fax: (313) 259-9409 OR (313) 259-3121

**CENTURY SERIES
ARCHITECTURAL
COMPACT FLUORESCENT LIGHTING**

MAXIMUM WATTAGE

**2 Twin 13
2 Quad 26**

CATALOG NUMBERS

**RR90721
RR90722**

Detailed Photometry - Installed Fixture

FROM I.T.L. (BOULDER, CO) RR90721: TEST NUMBER 42373
RR90722: TEST NUMBER 42217

RR90721

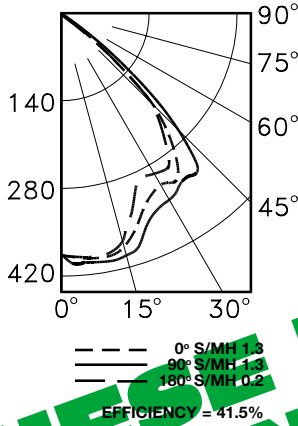
*LER = 16.9
•AEC = \$14.20

CANDLEPOWER DISTRIBUTION

	0.0	45.0	90.0	135.0	180.0
0	378	378	378	378	378
5	387	391	396	391	389
15	383	401	396	390	378
25	327	380	350	364	296
35	317	332	325	310	298
45	213	246	265	243	210
55	37	37	37	41	43
65	4	4	3	3	4
75	0	0	0	0	0
85	0	0	0	0	0
90	0	0	0	0	0

COEFFICIENTS OF UTILIZATION

RF	20					
	80					
RC	70	50	30	10	0	
RW 1	47	45	44	43	42	41
2	44	41	39	37	36	36
3	41	37	35	33	34	32
4	38	34	31	29	30	28
5	35	31	28	26	27	25
6	33	28	25	23	24	23
7	31	26	23	21	22	21
8	29	24	21	19	20	19
9	27	22	19	17	18	17
10	25	21	18	16	17	16



*LER = Lamp Effic. x Util. Coeff. x Ballast Factor
= 100 lm/w x 0.415 x 0.9 = 37.35 lm/w

•AEC = Annual Energy Cost per 100 sq ft (based on 3000 hours/yr) @ \$0.08/kwh

RR90722

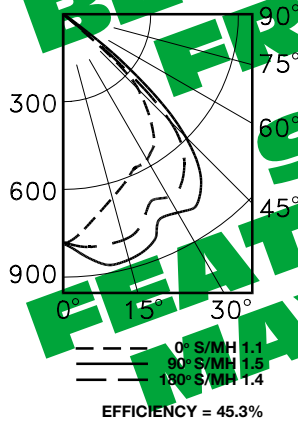
*LER = 23.5
•AEC = \$10.22

CANDLEPOWER DISTRIBUTION

	0.0	45.0	90.0	135.0	180.0
0	783	783	783	783	783
5	744	770	820	820	807
15	643	762	856	874	798
25	578	691	765	830	717
35	531	652	779	799	710
45	372	469	596	603	540
55	76	88	131	151	139
65	7	9	8	8	9
75	0	0	0	0	0
85	0	0	0	0	0
90	0	0	0	0	0

COEFFICIENTS OF UTILIZATION

RF	20					
	80					
RC	70	50	30	10	0	
RW 1	51	49	48	47	46	45
2	47	45	42	41	42	41
3	44	41	38	36	39	35
4	41	37	34	31	35	31
5	38	34	30	28	32	27
6	36	31	27	25	30	25
7	33	28	25	22	27	22
8	31	26	22	20	25	20
9	29	24	21	18	23	18
10	27	22	19	17	21	17



Estimated Multipliers
-30 White: CP x .90
-70 SofTex Clear: CP x .93
-71 SofTex Dune: CP x .87

-72 Black Alzak: CP x .65
-90 SofTex Champagne Gold: CP x .90
-91 SofTex Wheat: CP x .87
-OG Black OptiGroove: CP x .70

Options

- 30 White lower reflector, self-flanged. (CP x .90)
- 31 White lower reflector trim, self-flanged.
- 32 Trim extender. Broadens trim flange O.D. by 1" to cover larger ceiling opening.
- 39 Installed Q26 or Q18 (with Option -43) electronic dimming ballast for RR90722. Also see -LE, -WD.
- 43 Lower wattage: Specify 2TT9 watt (RR90721); 2Q18 watt (RR90722).
- 45 Gasket above reflector flange. Stops streaks.
- 58 277 volt 60 Hz. ballast instead.
- 70 SofTex Clear softly etched self-flanged reflector. Resists smudges. (CP x .93)
- 71 SofTex Dune softly etched self-flanged reflector. Resists smudges. (CP x .87)
- 72 Black Alzak self-flanged lower reflector. (CP x .65)
- 73 Internal emergency "Ni-Cad" battery pack

- concealed in housing. Controls one lamp. Switch and light unobtrusively located inside upper reflector. For indoor use.
- 74 Internal 2 lamp emergency "Ni-Cad" battery pack for use with 4-pin electronic lamps only (RR90722). Use with Option -96.
- 79 Extension collar for up to 2" thick ceilings.
- 82 Sloped ceiling adapter. Specify slope up to 30° in 5° increments.
- 84 Fixture wired for two circuits. See Options -FD and -RD.
- 90 SofTex Champagne Gold softly etched self-flanged reflector. Resists smudges. (CP x .90)
- 91 SofTex Wheat softly etched self-flanged reflector. Resists smudges. (CP x .87)
- 94 Specular Pewter or Umber or specified custom color self-flanged reflector. Consult factory.
- 96 Regulating electronic high power factor 0°F

- single circuit Quad ballast instead for RR90722. See Options -74, -84 and -LE.
- 97 Other voltage ballast. Consult factory.
- 98 347 volt 60 Hz. ballast instead. Consult factory for dimming.
- 99 Special modification. Consult factory.
- FD Double Fused primary. Replaceable. Use with -84.
- FS Fused primary. Replaceable. Aids servicing.
- LE With 4-pin electronic lamps for use with Options -39, -74 or -96 (RR90722). 2700°K or consult factory. Specify wattage and color temperature.
- LP With lamps. 2700°K or consult factory. Specify wattage and color temperature. Also see -LE.
- OG OptiGroove black seamless tapered aluminum lower reflector. White trim, self-flanged. (CP x .70)
- RD Double radio interference filter. Use with -84.
- RF Radio interference filter. Eliminates line feedback.
- WD Wall Dimmer for use with Option -39 (RR90722).

SUBMITTAL DATA

APPROVAL STAMP

JOB NAME _____
 TYPE _____
 WATTAGE _____ VOLTAGE _____
 CATALOG NUMBER _____

LIMITED WARRANTY: CATALOGUED KIRLIN FIXTURES ARE WARRANTIED FREE OF DEFECTS IN WORKMANSHIP OR MATERIAL FOR THREE YEARS FROM DATE OF PURCHASE. INSTALLLED TO N.E.C. / IN NORMAL USE. Manufacturer at his option will replace or repair such fixture or refund the purchase price on presentation of proof of purchase and defective fixture at the office of manufacturer within three years of original shipment. Liability of manufacturer is limited to the foregoing and manufacturer shall not be liable for any other damages, direct or indirect, sustained or suffered by purchaser or any person. This warranty is supplied to the buyer in place of all other warranties, expressed or implied. Seller does not warrant as to merchantability or fitness for a particular use, nor will any oral statement constitute a warranty or amend this specific warranty. Abnormal use, abuse of the fixture, improper installation, repair, or modification of the fixture without prior written authorization from the manufacturer will render the warranty void.