

### Low Brightness Type IC Downlight

#### Features

##### Lamp

- Designed for:
  - 1 vertical Quad 26 watt.
  - 2 pin G24d-3 base.
- See Option -43 for lower wattage.

##### Ballast

- Thermally protected, encased and potted standard.
- High power factor standard.
- 120 volt standard or see optional voltages.
- Dimming optional. (See Option -39)
- Electronic optional. (See Option -96)
- Visible and easily serviced from ceilings.

##### Fuse

- Available - Option -FS.

##### Reflectors

- Clear specular Alzak® aluminum upper reflector.
- Self-flanged low iridescence Alzak aluminum lower reflector.
- Optional Specular Matched Clear Duran® reflectors in Gold or White lower reflectors, or all white or OptiGroove lower reflectors available.

##### Housing

- Acrylic enameled aluminum.
- Cool: Dissipates heat across entire surface area. Ventilated.
- Rustproof: Exceeds 1000 hour ASTM 5% salt spray test.
- Entire luminaire serviced through removable reflector.
- Prewired outlet for 120VAC, 15A, 1-pole, 1-phase. Accessible through fixture opening.
- Mount-in-plaster frame.

##### Installation

- 27" hanger bars supplied (2).
- Hanger bars are universal for all luminaire models supplied.
- Hanger bars are covered in plastic for protection.
- UL (Canada) Listing
- Wet, damp or dry locations - covered ceilings.
- Through-hole conductor
- Type IC - Approved for direct contact with insulation.

##### Three Year Limited Warranty

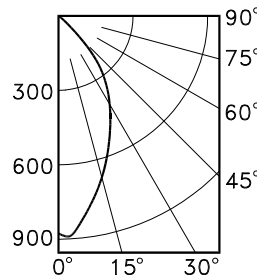
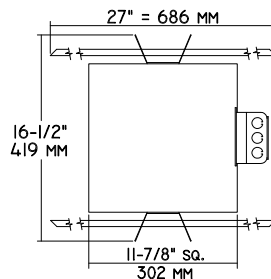
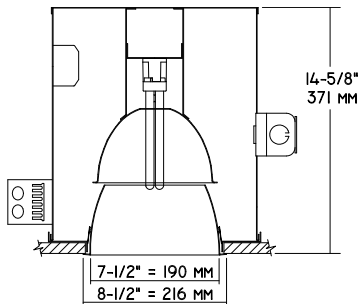
- Complete standard fixture.



THIS FIXTURE IS NO LONGER AVAILABLE FOR CONSULTATION REPLACEMENT

#### Performance at a Glance

RR90717



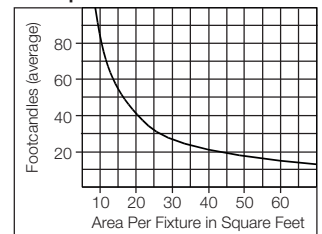
RR90717 S/MH 0.8

##### Cone of Light\*

Ft.	FC	Dia.
6	24.4	6
8	13.7	8
10	8.8	11
12	6.1	13
14	4.5	15
16	3.4	17

RR90717

##### Multiple Fixture FC Calculator \*\*



RR90717

##### Cone of Light Key

- Ft. Distance from fixture
- FC Footcandles (average)
- Dia. Circle of light at 50% of FC

\* Dia. (in ft.) shown is where FC value is half the FC at nadir.  
 \*\* Based on RCR2; ceiling 70%; wall 50%; floor 20%. Use S/MH shown for each fixture.

## THE KIRLIN COMPANY

3401 EAST JEFFERSON AVENUE • DETROIT, MICHIGAN 48207-4232  
 (313) 259-6400 • Fax: (313) 259-9409 OR (313) 259-3121

**CENTURY SERIES  
 ARCHITECTURAL  
 COMPACT FLUORESCENT LIGHTING**

MAXIMUM WATTAGE

CATALOG NUMBER

**1 Quad 26**

**RR90717**

THE KIRLIN COMPANY RESERVES THE RIGHT TO CHANGE, WITHOUT NOTICE, DETAILS OR SPECIFICATIONS IN PRODUCT DESIGN.

Alzak® is a registered trademark of ALCOA.

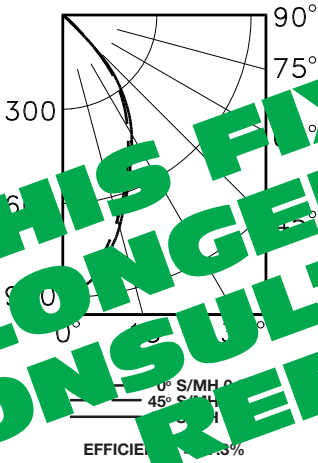
### Detailed Photometry - Installed Fixture

FROM I.T.L. (BOULDER, CO) TEST NUMBER 35737

#### CANDLEPOWER DISTRIBUTION

	0.0	22.5	45.0	67.5	90.0
0	877	877	877	877	877
5	892	899	893	891	874
15	664	621	619	627	672
25	489	479	447	497	572
35	339	334	312	333	363
45	191	188	174	171	200
55	12	14	15	15	14
65	2	2	2	2	2
75	1	1	1	1	2
85	0	0	0	1	0
90	0	0	0	0	0

RR90717 \*LER = 24.5  
•AEC = \$9.79



#### Estimated Multipliers

- 30 White: CP x .90
- 70 SofTex Clear: CP x .93
- 71 SofTex Dune: CP x .87
- 72 Black Alzak: CP x .65
- 90 SofTex Champagne Gold: CP x .90
- 91 SofTex Wheat: CP x .87
- OG Black OptiGroove: CP x .70

#### COEFFICIENT OF UTILIZATION

FC	0	25	30	10	50	30	10
1	54	53	51	50	50	49	48
2	51	49	47	46	47	46	44
3	49	46	44	42	44	42	41
4	47	43	41	39	42	40	38
5	44	40	38	36	39	37	35
6	42	38	35	33	37	34	33
7	40	35	32	30	34	32	30
8	37	33	30	28	32	30	28
9	35	30	28	26	30	27	26
10	33	28	26	24	28	25	24

\* LER = Luminaire Efficiency  
LER = Luminaire Effic. x Total Lamp Lumens x Ballast Factor  
Input Watts

• AEC = Annual Energy Cost per  
1000 lumens (based on 3000  
hours use @ \$0.08 KWH).

THIS FIXTURE IS NO LONGER AVAILABLE FOR CONSULT FACTORY REPLACEMENT

### Options

- 30 White lower reflector, self-flanged. (CP x .90)
- 31 White lower reflector trim, self-flanged.
- 32 Trim extender. Broadens trim flange O.D. by 1" to cover larger ceiling opening.
- 39 Installed electronic dimming ballast. Consult factory for Q13 availability or quantity and type required. Also see -LE, -WD.
- 43 Lower wattage: Specify 1Q18 or 1Q13.
- 45 Gasket above reflector flange. Stops dust streaks on ceiling.
- 58 277 volt 60 Hz. ballast instead.
- 70 SofTex Clear softly etched self-flanged lower reflector. Resists smudges. (CP x .93)
- 71 SofTex Dune softly etched self-flanged lower reflector. Resists smudges. (CP x .87)

- 72 Black Alzak self-flanged lower reflector. (CP x .65)
- 73 Internal emergency "Ni-Cad" battery pack concealed in housing. Switch and light unobtrusively located inside upper reflector. For indoor use.
- 79 Extension collar for up to 2" thick ceilings.
- 82 Sloped ceiling adapter. Specify slope up to 30° in 5° increments.
- 90 SofTex Champagne Gold softly etched self-flanged lower reflector. Resists smudges. (CP x .90)
- 91 SofTex Wheat softly etched self-flanged lower reflector. Resists smudges. (CP x .87)
- 94 Specular Pewter or Umber or other specified custom color self-flanged reflector. Consult factory.

- 96 Regulating electronic high power factor 0°F ballast instead. See Option -LE.
- 97 Other voltage ballast. Consult factory.
- 98 347 volt 60 Hz. ballast instead. Consult factory for dimming or Q13 electronic.
- 99 Special modification. Consult factory.
- FS Fused. Replaceable. Aids servicing.
- LE With 4-pin electronic lamp for use with Options -39 or -96. 2700°K or consult factory. Specify wattage and color temperature.
- LP With lamp. 2700°K or consult factory. Specify wattage and color temperature. Also see -LE.
- OG OptiGroove black seamless tapered aluminum lower reflector. White trim, self-flanged. (CP x .70)
- RF Radio interference filter. Eliminates feedback.
- WD Wall Dimmer for use with Option -39.

### SUBMITTAL DATA

### APPROVAL STAMP

JOB NAME \_\_\_\_\_

TYPE \_\_\_\_\_

WATTAGE \_\_\_\_\_ VOLTAGE \_\_\_\_\_

CATALOG NUMBER \_\_\_\_\_

LIMITED WARRANTY: CATALOGUED KIRLIN FIXTURES ARE WARRANTED FREE OF DEFECTS IN WORKMANSHIP OR MATERIAL FOR THREE YEARS FROM DATE OF PURCHASE. INSTALLATION, MAINTENANCE, AND REPAIR MUST BE PERFORMED BY A QUALIFIED ELECTRICIAN. THE PURCHASER'S PRESENTATION OF THIS WARRANTY TO THE OFFICE OF MANUFACTURE WITHIN THREE YEARS OF ORIGINAL INSTALLATION IS LIMITED TO THE ORIGINAL PURCHASER. LIABILITY OF MANUFACTURE IS LIMITED TO THE ORIGINAL PURCHASER. THIS WARRANTY IS SUPPLIED FROM THE MANUFACTURE AND WILL BE VOID IF THE WARRANTY CARD IS NOT MAINTAINED AND RETURNED TO THE MANUFACTURE.