

Popular Open Downlights: 7 1/2" Aperture

Features

Lamp

- Designed for:
 - 2 horizontal Twin Tube 13 watt : RR90706.
 - 2 horizontal Quad 26 watt: RR90707.
- 2 pin GX23 base: RR90706.
- 2 pin G24d-3 base: RR90707.
- See Option -43 for lower wattage.

Ballast

- Thermally protected, encased and potted standard.
- High power factor standard.
- Single circuit wiring. Optional two-circuit wiring. (See Option -84)
- 120 volt standard or see optional voltages.
- Dimming optional for RR90707. (See Option -89)
- Electronic optional for RR90707. (See Option -96)
- Visible and easily serviced in all ceilings.

Fuse

- Available as Option -FS (single) or -FD (double).

Reflector

- Self-flanged low iridescence specular Alzak® aluminum.
- Optional SofTex softly etched Clear, Dune, Champagne Gold or Wheat available.

- Optional OptiGroove assembly available.
- Housing**
 - Acrylic enameled aluminum.
 - Cool: Dissipates heat across entire surface area. Ventilated.
 - Rustproof: Exceeds 1000 hour ASTM 5% salt spray test.
 - Entire luminaire serviced through removable reflector.
 - Prewired outlet box: 14 GA (NEC) galvanized steel UL listed. Accessible through fixture opening.
 - Built-in plaster frame.

Installation

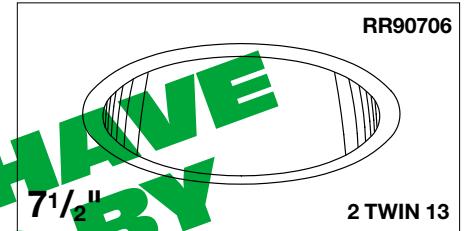
- 27" hanger bars supplied (2).
- Fully adjustable universal mounting brackets supplied (2).
- Reflector and socket bracket adjust as unit for ease of installation.
- Recesses indoor or outdoor in covered locations.

UL, C-UL (Canada) Listings

- Wet, damp or dry locations, covered ceilings.
- Through-branch circuit conductors (6 #12).
- Type IC for RR90706. Approved for direct contact with insulation.

Three Year Limited Warranty

- Complete standard fixture.

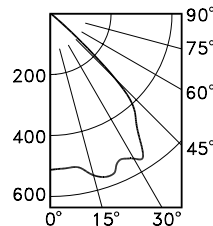
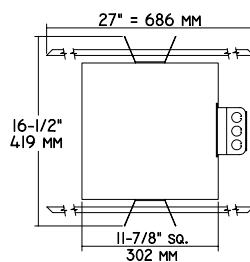
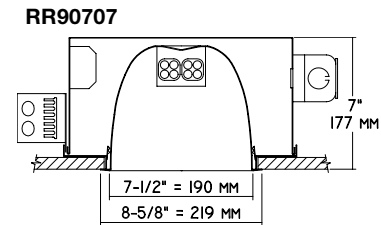
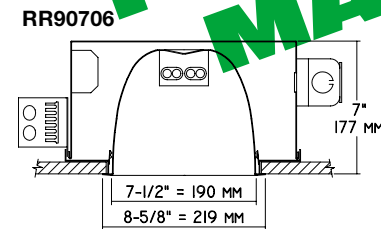


RR90706
2 TWIN 13
Type IC
For Direct Contact with Insulation

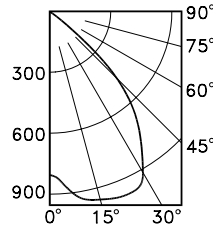


RR90707
2 QUAD 26
200 Watt Incandescent Equivalent
Dimming Optional

Performance at a Glance



RR90706 S/MH 1.5



RR90707 S/MH 1.5

Cone of Light*

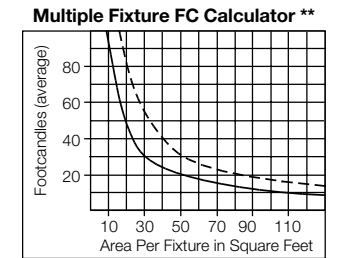
Ft.	FC	Dia.
6	14.3	13
8	8.0	17
10	5.1	21
12	3.6	25
14	2.6	30
16	2.0	34

RR90706

Cone of Light*

Ft.	FC	Dia.
6	22.4	12
8	12.6	16
10	8.1	20
12	5.6	24
14	4.1	28
16	3.2	33

RR90707



RR90706 ——— RR90707 - - - -

Cone of Light Key

Ft. Distance from fixture
FC Footcandles (average)
Dia. Circle of light at 50% of FC

* Dia. (in ft.) shown is where FC value is half the FC at nadir.
 ** Based on RCR2; ceiling 70%; wall 50%; floor 20%. Use S/MH shown for each fixture.
 Distribution curves and S/MH data shown are 90° to lamp axis.

THE KIRLIN COMPANY

3401 EAST JEFFERSON AVENUE • DETROIT, MICHIGAN 48207-4232
 (313) 259-6400 • Fax: (313) 259-9409 OR (313) 259-3121

CENTURY SERIES
ARCHITECTURAL
COMPACT FLUORESCENT LIGHTING

MAXIMUM WATTAGE
2 Twin 13
2 Quad 26

CATALOG NUMBERS
RR90706
RR90707

THE KIRLIN COMPANY RESERVES THE RIGHT TO CHANGE, WITHOUT NOTICE, DETAILS OR SPECIFICATIONS IN PRODUCT DESIGN.

Alzak® is a registered trademark of ALCOA.

Detailed Photometry - Installed Fixture

FROM I.T.L. (BOULDER, CO) RR90706: TEST NUMBER 35782
FROM BALL LABS RR90707: TEST NUMBER 5830

RR90706

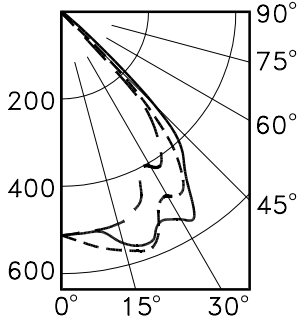
*LER = 22.5
•AEC = \$10.66

CANDLEPOWER DISTRIBUTION

	0.0	45.0	90.0	135.0	180.0
0	513	513	513	513	513
5	526	527	524	516	509
15	560	554	545	507	474
25	491	570	488	509	404
35	476	478	516	434	390
45	263	345	349	323	211
55	25	25	22	22	20
65	10	9	9	9	9
75	4	4	4	4	4
85	1	1	1	1	1
90	0	0	0	0	0

COEFFICIENTS OF UTILIZATION

RF	20					
	80					
RC	70	50	30	10	5	
RW	70	50	30	10	5	
1	62	61	59	58	57	55
2	59	56	54	52	53	50
3	56	52	49	47	50	46
4	53	48	45	42	46	42
5	49	44	41	38	40	38
6	46	41	37	35	40	37
7	43	37	34	31	36	33
8	40	34	31	28	33	28
9	37	31	27	25	30	25
10	35	29	25	22	28	22



--- 0° S/MH 1.4
--- 90° S/MH 1.5
--- 180° S/MH 1.0
EFFICIENCY = 55.3%

* LER = $\frac{\text{Lamp Power} \times \text{Hours}}{\text{Total Lumens} \times \text{Area} \times \text{Height}}$
Efficiency = $\frac{\text{Total Lumens}}{\text{Lamp Power} \times \text{Hours}}$

• AEC = Annual Energy Cost per 1000 lumens (based on 3000 hours) = \$0.08 KWH

RR90707

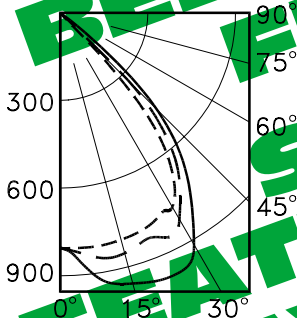
*LER = 23.9
•AEC = \$10.05

CANDLEPOWER DISTRIBUTION

	0.0	22.5	45.0	67.5	90.0
0	808	808	808	808	808
5	834	829	832	848	848
15	829	912	950	966	968
25	793	924	929	963	988
35	749	809	824	831	841
45	331	410	456	498	508
55	20	26	24	24	22
65	9	7	7	6	6
75	0	0	0	0	0
85	0	0	0	0	0
90	0	0	0	0	0

COEFFICIENTS OF UTILIZATION

RF	20					
	80					
RC	70	50	30	10	5	
RW	70	50	30	10	5	
1	52	51	49	48	48	46
2	49	47	45	43	45	42
3	46	43	41	39	41	38
4	44	40	37	35	38	34
5	41	37	33	31	35	31
6	38	34	31	28	33	28
7	36	31	28	26	30	25
8	33	28	25	23	27	23
9	31	25	22	20	25	20
10	28	23	20	18	22	18



--- 0° S/MH 1.4
--- 45° S/MH 1.5
--- 90° S/MH 1.5
EFFICIENCY = 46.1%

Estimated Multipliers
-70 SofTex Clear: CP x .93
-71 SofTex Dune: CP x .87
-90 SofTex Champagne Gold: CP x .90
-91 SofTex Wheat: CP x .87CP x .85
-OG Black OptiGroove: CP x .75

Options

- 31 White reflector trim, self-flanged.
- 32 Trim extender. Broadens trim flange O.D. by 1" to cover larger ceiling opening.
- 39 Installed Q26 or Q18 (with Option -43) electronic dimming ballast for RR90707. Consult factory for quantity and type required. Also see -LE and -WD.
- 43 Lower wattage: Specify 2TT9 watt (RR90706); 2Q18 watt (RR90707).
- 45 Gasket above reflector flange. Stops streaks.
- 58 277 volt 60 Hz. ballast instead.
- 70 SofTex Clear self-flanged reflector. (CP x .93)
- 71 SofTex Dune self-flanged reflector. (CP x .87)
- 73 Internal emergency "Ni-Cad" battery pack concealed in housing. Controls one lamp. Switch and light unobtrusively located inside reflector. For indoor use.
- 74 Internal 2 lamp emergency "Ni-Cad" battery pack for use with 4-pin electronic lamps only (RR90707). Use with Option -96.
- 79 Extension collar for up to 2" thick ceilings.
- 82 Sloped ceiling adapter. Specify slope up to 30° in 5° increments.
- 84 Fixture wired for two circuits. See -FD and -RD.
- 90 SofTex Champagne Gold self-flanged reflector. (CP x .90)
- 91 SofTex Wheat self-flanged reflector. (CP x .87)
- 94 Specular Pewter or other specified custom color self-flanged reflector. Consult factory.
- 96 Regulating electronic high power factor 0°F single circuit ballast instead for RR90707 only. See Options -74, -84 and -LE.
- 97 Other voltage ballast. Consult factory.
- 98 347 volt 60 Hz. ballast instead. Consult factory for dimming.
- 99 Special modification. Consult factory.
- FD Double Fused primary. One per ballast. Replaceable. For use with Option -84.
- FS Fused primary. One per fixture. Replaceable. Aids servicing.
- LE With 4-pin electronic lamps for use with -39, -74 or -96 (RR90707). 2700°K or consult factory. Specify wattage and color temperature.
- LP With lamps. 2700°K or consult factory. Specify wattage and color temperature. Also see -LE.
- OG OptiGroove black seamless tapered aluminum assembly. White trim, self-flanged. (CP x .75)
- RD Double radio interference filter. Use with -84.
- RF Radio interference filter. Eliminates line feedback.
- WD Wall Dimmer for use with Option -39 (RR90707).

SUBMITTAL DATA

APPROVAL STAMP

JOB NAME _____
TYPE _____
WATTAGE _____ VOLTAGE _____
CATALOG NUMBER _____

LIMITED WARRANTY: CATALOGUED KIRLIN FIXTURES ARE WARRANTIED FREE OF DEFECTS IN WORKMANSHIP OR MATERIAL FOR THREE YEARS FROM DATE OF PURCHASE. INSTALLATION, INNORMAL USE, MANUFACTURER AT HIS OPTION WILL REPLACE or repair such fixture or refund the purchase price on presentation of proof of purchase and defective fixture at the office of manufacturer within three years of original shipment. Liability of manufacturer is limited to the foregoing and manufacturer shall not be liable for any other damages, direct or indirect, sustained or suffered by purchaser or any person. This warranty is supplied to the buyer in place of all other warranties, expressed or implied. Seller does not warrant as to merchantability or fitness for a particular use, nor will any oral statement constitute a warranty or amend this specific warranty. Abnormal use, abuse of the fixture, improper installation, repair, or modification of the fixture without prior written authorization from the manufacturer will render the warranty void.

THESE FIXTURES HAVE BEEN REPLACED BY ERR-07009-43 SOME DESIGN FEATURES OR OPTIONS MAY HAVE CHANGED