

Versatile Type IC Quad 26 Downlight

Features

Lamp

- Designed for 1 vertical Quad 26 watt.
- 2 pin G24d-3 base.
- See Option -43 for lower wattage.

Ballast

- Thermally protected, encased and potted standard.
- High power factor standard.
- 120 volt standard or see optional voltages.
- Dimming optional. (See Option -96)
- Electronic or magnetic ballast (See Option -96)
- Visible light sensor in all ceiling applications.

Fuse

- Available in 1/2 amp and 1 amp.

Reflector

- Self-flashed low iridescence Alzak® aluminum. Compound curved.
- Optional SofTex softly etched Clear, Dune, Champagne Gold or Wheat available.
- Optional OptiGroove assembly available.

Housing

- Acrylic enameled aluminum.

- Cool: Dissipates heat across entire surface area. Ventilated.
- Rustproof: Exceeds 1000 hour ASTM 5% salt spray test.
- Entire luminaire serviceable with removable reflector.
- Pre-wired for ballast (UL listed).
- Available in 120V or 277V.
- UL listed for Class II applications.
- High fixture opening.
- Built-in plastic trim.

Installation

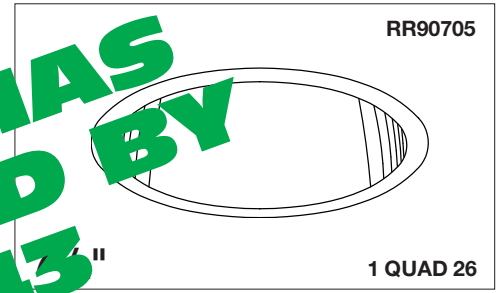
- 2 pin G24d-3 base supplied.
- Fully adjustable for ceiling mounting.
- Bracket supplied for ceiling mounting.
- Reflector and socket bracket adjustable for ease of installation.
- Recesses indoor or outdoor for above ceiling locations.

UL, C-UL and Canadian Listings

- UL listed for indoor and outdoor use in dry locations.
- C-UL listed for indoor and outdoor use in damp locations.
- Through-hole for electrical conductors (6 #12).
- Approved for direct contact with insulation.

Three Year Limited Warranty

- Covers standard fixture.



RR90705

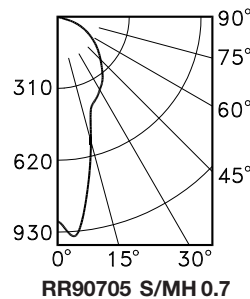
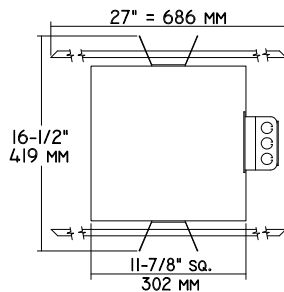
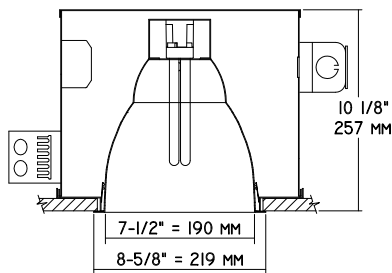
1 QUAD 26

100 Watt Incandescent Equivalent
65% Efficiency

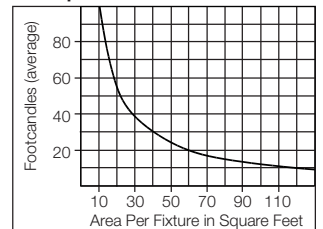
THIS FIXTURE HAS BEEN REPLACED BY RR-07005-43 SOME DESIGN FEATURES OR OPTIONS MAY HAVE CHANGED

Performance and Efficiency

RR90705



Multiple Fixture FC Calculator **



RR90705

Cone of Light*

Ft.	FC	Dia.
6	24.6	3.7
8	13.9	5.0
10	8.9	6.2
12	6.2	7.4
14	4.5	8.7
16	3.5	9.9

RR90705

Cone of Light Key

- Ft.** Distance from fixture
- FC** Footcandles (average)
- Dia.** Circle of light at 50% of FC

* Dia. (in ft.) shown is where FC value is half the FC at nadir.
** Based on RCR2; ceiling 70%; wall 50%; floor 20%. Use S/MH shown for each fixture.

THE KIRLIN COMPANY

3401 EAST JEFFERSON AVENUE • DETROIT, MICHIGAN 48207-4232
(313) 259-6400 • Fax: (313) 259-9409 OR (313) 259-3121

CENTURY SERIES
ARCHITECTURAL
COMPACT FLUORESCENT LIGHTING

MAXIMUM WATTAGE

CATALOG NUMBER

1 Quad 26

RR90705

THE KIRLIN COMPANY RESERVES THE RIGHT TO CHANGE, WITHOUT NOTICE, DETAILS OR SPECIFICATIONS IN PRODUCT DESIGN.

Alzak® is a registered trademark of ALCOA.

Detailed Photometry - Installed Fixture

FROM I.T.L. (BOULDER, CO) TEST NUMBER 42376

CANDLEPOWER DISTRIBUTION

	0.0	22.5	45.0	67.5	90.0
0	887	887	887	887	887
5	934	936	938	939	925
15	648	611	580	566	519
25	447	445	435	422	431
35	382	384	383	384	366
45	342	371	268	274	359
55	299	185	185	185	179
65	96	0	0	104	103
75	0	0	2	2	1
85	0	0	0	0	0
90	0	0	0	0	0

RR90705

*LER = 33.6
•AEC = \$7.15



0° S/M...
45° S/M...
90° S/M...
EFFICIENCY = 64.8%

- Estimated Lumens**
- 73 SoftTex Clear: CP x .93
 - 74 SoftTex Dune: CP x .87
 - 75 SoftTex Champagne Gold: CP x .90
 - 91 SoftTex Wheat: CP x .87
 - OG Black OptiGroove: CP x .75

COEFFICIENTS OF UTILIZATION

RF	70	50	30	50	30
1	73	68	66	66	66
2	62	63	59	59	56
3	57	51	42	48	44
4	53	48	41	37	44
5	50	42	37	33	40
6	46	38	33	30	37
7	43	35	31	27	34
8	41	33	28	25	32
9	38	31	26	23	30
10	38	31	26	23	23

* LER = Luminaire Efficiency Rating
LER = Luminaire Effic. x Total Lamp Lumens x Ballast Factor
Input Watts
AEC = Annual Energy Cost per
Lumens (based on 3000
hours of use @ \$0.08 KWH/h).

THIS FIXTURE HAS BEEN REPLACED BY FRR-07005-43 SOME DESIGN FEATURES OR OPTIONS MAY HAVE CHANGED

Options

- 31 White reflector trim, self-flanged.
- 32 Trim extender. Broadens trim flange O.D. by 1" to cover larger ceiling opening.
- 39 Installed electronic dimming ballast. Consult factory for Q13 watt or quantity and type required. Also see -LE and -WD.
- 43 Lower wattage: Specify 1Q18 or 1Q13.
- 45 Gasket above reflector flange. Stops dust streaks on ceiling.
- 58 277 volt 60 Hz. ballast instead.
- 70 SoftTex Clear softly etched self-flanged reflector. Resists smudges. (CP x .93)
- 71 SoftTex Dune softly etched self-flanged reflector. Resists smudges. (CP x .87)
- 73 Internal emergency "Ni-Cad" battery pack

- concealed in housing. Switch and light unobtrusively located inside reflector. For indoor use.
- 79 Extension collar for up to 2" thick ceilings.
- 82 Sloped ceiling adapter. Specify slope up to 30° in 5° increments.
- 90 SoftTex Champagne Gold softly etched self-flanged reflector. Resists smudges. (CP x .90)
- 91 SoftTex Wheat softly etched self-flanged reflector. Resists smudges. (CP x .87)
- 94 Specular Pewter or other specified custom color self-flanged reflector. Consult factory.
- 96 Regulating electronic high power factor 0°F ballast instead. See Option -LE.
- 97 Other voltage ballast. Consult factory.
- 98 347 volt 60 Hz. ballast instead. Consult factory for dimming or Q13 electronic.

- 99 Special modification. Consult factory.
- FS Fused. Replaceable. Aids servicing.
- LE With 4-pin electronic lamp for use with Options -39 or -96. 2700°K or consult factory. Specify wattage and color temperature.
- LP With lamp. 2700°K or consult factory. Specify wattage and color temperature. Also see Option -LE.
- OG OptiGroove black seamless tapered aluminum assembly. White trim, self-flanged. (CP x .75)
- RF Radio interference filter. Eliminates line feedback.
- WD Wall dimmer for use with Option -39.

SUBMITTAL DATA

APPROVAL STAMP

JOB NAME _____

TYPE _____

WATTAGE _____ VOLTAGE _____

CATALOG NUMBER _____

LIMITED WARRANTY: CATALOGUED KIRLIN FIXTURES ARE WARRANTED FREE OF DEFECTS IN WORKMANSHIP OR MATERIAL FOR THREE YEARS FROM DATE OF PURCHASE. INSTALLATION, MAINTENANCE, AND REPAIRS ARE THE RESPONSIBILITY OF THE USER. THE PURCHASER'S PRESENTATION OF THIS WARRANTY TO THE OFFICE OF THE MANUFACTURER WITHIN THREE YEARS OF ORIGINAL INSTALLATION IS A CONDITION OF THE WARRANTY. LIABILITY OF MANUFACTURER IS LIMITED TO REPAIR OR REPLACEMENT OF THE PRODUCT. THIS WARRANTY IS SUPPLIED FROM THE MANUFACTURER AND IS NOT VALID UNLESS SIGNED BY THE MANUFACTURER'S AUTHORIZED REPRESENTATIVE.