

Shallow 5" Depth: Dual Reflector Design

Features

Lamp

- Designed for:
 - 2 horizontal Quad 13 watt: RR90613.
 - 2 horizontal Quad 18 watt: RR90614.
- 2 pin GX23 base: RR90613.
- 2 pin G24d-2 base: RR90614.
- See Option -43 for lower wattage.

Ballast

- Thermally protected, encased and potted standard.
- High power factor standard.
- Single circuit wiring. Optional two circuit wiring. (See Option -43)
- 120 volt standard. See optional voltages.
- Dimming optional. (See Option -3)
- Electronic optional ballast (Option -96)
- Visible area lamps recessed in all ceilings.

Fuse

- Available as Option -FS (single) or -FD (double).

Reflector

- Clear specular Alzak® aluminum lower reflector.
- Self-flanged low iridescence specular Alzak aluminum lower reflector.
- Optional SofTex softly etched Clear Dune, Champagne Gold, or Great Wall reflectors available.

- Optional White, Black Specular Alzak or OptiGroove lower reflectors available.

Housing

- Acrylic enameled aluminum housing.
- Cool: Dissipates heat from entire surface area. No hot spots.
- Fireproof: Exceeds 1000° F. (UL 94V-0) Charpy test.
- Entire luminaire is made through extrusion.
- Powder coated outlet box: 14" diameter galvanized steel. (UL listed) accessible through wire opening.
- Removable outer frame.

Installation

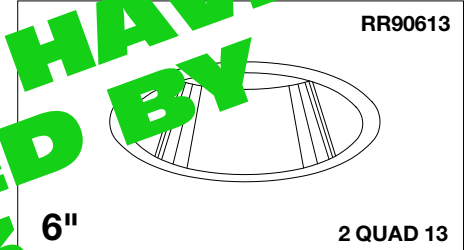
- 27" hanger bars supplied.
- Fully adjustable universal mounting brackets included (2).
- Mounts to floor or outlet box.
- See options.

UL, C-UL (Canada) Listings

- Wet and dry locations, covered and un-covered.
- Through-bracket mounting reflectors (6 #12).

Three Year Limited Warranty

See literature for complete fixture.



RR90613
6" 2 QUAD 13
Electronic Ballast Optional
100 Watt Incandescent Equivalent

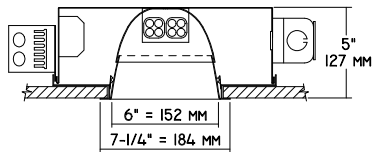


RR90614
6" 2 QUAD 18
Dimming Optional
150 Watt Incandescent Equivalent

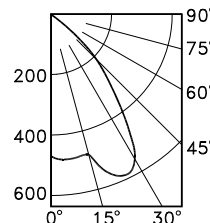
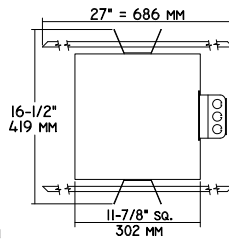
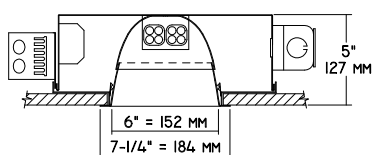
THESE FIXTURES HAVE BEEN REPLACED BY SOME DESIGN FEATURES OR OPTIONS MAY HAVE CHANGED

Performance

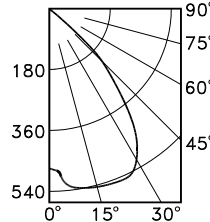
RR90613



RR90614



RR90613 S/MH 1.5



RR90614 S/MH 1.4

Cone of Light*

Ft.	FC	Dia.
6	12.6	11
8	7.1	15
10	4.5	18
12	3.1	22
14	2.3	26
16	1.8	29

RR90613

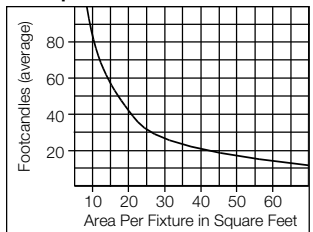
Cone of Light*

Ft.	FC	Dia.
6	13.5	12
8	7.6	16
10	4.8	19
12	3.4	23
14	2.5	27
16	1.9	31

RR90614

* Dia. (in ft.) shown is where FC value is half the FC at nadir.

Multiple Fixture FC Calculator**



RR90613 and RR90614

Cone of Light Key

- Ft. Distance from fixture
- FC Footcandles (average)
- Dia. Circle of light at 50% of FC

** Based on RCR2; ceiling 70%; wall 50%; floor 20%. Use S/MH shown for each fixture. Distribution curves and S/MH data shown are 90° to lamp axis.

THE KIRLIN COMPANY

3401 EAST JEFFERSON AVENUE • DETROIT, MICHIGAN 48207-4232
(313) 259-6400 • Fax: (313) 259-9409 OR (313) 259-3121

CENTURY SERIES
ARCHITECTURAL
COMPACT FLUORESCENT LIGHTING

MAXIMUM WATTAGE

2 Quad 13
2 Quad 18

CATALOG NUMBERS

RR90613
RR90614

Detailed Photometry - Installed Fixture

FROM I.T.L. (BOULDER, CO) RR90613: TEST NUMBER 34655
RR90614: TEST NUMBER 35690

RR90613

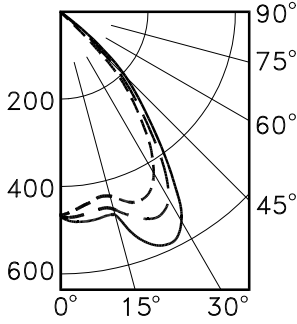
*LER = 18.8
•AEC = \$12.75

CANDLEPOWER DISTRIBUTION

	0.0	45.0	90.0	135.0	180.0
0	453	453	453	453	453
5	440	443	460	466	454
15	398	482	463	499	431
25	426	514	550	555	480
35	334	412	457	459	414
45	114	180	230	210	177
55	24	45	53	28	28
65	2	3	2	2	2
75	2	2	2	2	2
85	2	2	2	2	2
90	0	0	0	0	0

COEFFICIENTS OF UTILIZATION

RF	20					
RC	80					
RW	70	50	30	10	10	
1	55	53	55	55	49	48
2	52	52	56	47	46	44
3	48	48	41	42	42	40
4	46	43	40	39	39	37
5	44	39	38	38	36	34
6	41	38	35	35	33	31
7	38	36	32	32	30	28
8	36	31	28	25	27	25
9	33	28	25	23	27	23
10	31	26	23	21	25	21



0° S/MH
90° S/MH
EFFICIENCY = 34.4%

* LER = 18.8
Efficiency Factor = 0.344

• AEC = Annual Energy Cost per 1000 hours (based on 3000 hours/year)
\$0.08 KWH

RR90614

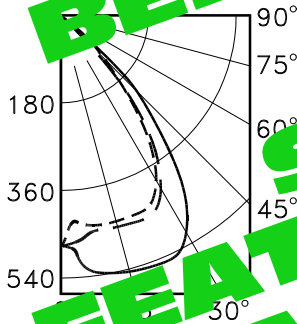
*LER = 17.7
•AEC = \$10.94

CANDLEPOWER DISTRIBUTION

	0.0	45.0	90.0	135.0	180.0
0	485	485	485	485	485
5	472	475	482	488	474
15	431	516	542	542	464
25	431	521	537	464	464
35	350	457	457	431	370
45	114	180	220	210	177
55	24	45	53	28	28
65	2	3	2	2	2
75	2	2	2	2	2
85	2	2	2	2	2
90	0	0	0	0	0

COEFFICIENTS OF UTILIZATION

RF	20					
RC	80					
RW	70	50	30	10	10	
1	39	39	39	33	36	35
2	38	38	37	34	33	32
3	37	37	35	32	30	29
4	34	31	29	27	28	27
5	32	29	27	25	26	25
6	30	27	24	23	24	23
7	28	24	22	21	22	20
8	26	23	20	19	20	19
9	24	21	18	17	18	17
10	23	19	17	15	17	15



0° S/MH
90° S/MH
EFFICIENCY = 34.8%

Estimated Multipliers
-30 White: CP x .90
-70 SofTex Clear: CP x .93
-71 SofTex Dune: CP x .87

-72 Black Alzak: CP x .65
-90 SofTex Champagne Gold: CP x .90
-91 SofTex Wheat: CP x .87
-OG Black OptiGroove: CP x .70

Options

- 30 White lower reflector, self-flanged. (CP x .90)
- 31 White lower reflector trim, self-flanged.
- 32 Trim extender. Broadens trim flange O.D. by 1".
- 39 Installed Q18 electronic dimming ballast for RR90614. Consult factory for Q13 availability for RR90613. Also see -LE and -WD. Indoor use.
- 43 Lower wattage: Specify 2TT7 watt (RR90613); 2TT9 watt (RR90614).
- 45 Gasket above reflector flange. Stops streaks.
- 58 277 volt 60 Hz. ballast instead.
- 70 SofTex Clear self-flanged reflector. (CP x .93)
- 71 SofTex Dune self-flanged reflector. (CP x .87)
- 72 Black Alzak® self-flanged lower reflector. (CP x .65)
- 73 Internal emergency "Ni-Cad" battery pack

- concealed in housing. Controls one lamp. Switch and light unobtrusively located inside upper reflector. For indoor use.
- 74 Internal 2 lamp emergency "Ni-Cad" battery pack for use with 4-pin electronic lamps only. Use with Option -96.
- 79 Extension collar for up to 2" thick ceilings.
- 82 Sloped ceiling adapter. Specify slope up to 30° in 5° increments.
- 84 Fixture wired for two circuits. See -FD and -RD.
- 90 SofTex Champagne Gold self-flanged reflector. (CP x .90)
- 91 SofTex Wheat self-flanged reflector. (CP x .87)
- 94 Specular Pewter or Umber or specified custom color self-flanged reflector. Consult factory.
- 96 Regulating electronic high power factor 0°F single circuit standard wattage ballast instead. See

- Options -74, -84 and -LE.
- 97 Other voltage ballast. Consult factory.
- 98 347 volt 60 Hz. ballast instead. Consult factory for dimming or Q13 electronic.
- 99 Special modification. Consult factory.
- FD Double Fused primary. Replaceable. Use with -84.
- FS Fused primary. Replaceable. Aids servicing.
- LE With 4-pin electronic lamps for use with Options -39, -74 or -96. 2700°K or consult factory. Specify wattage and color temperature
- LP With lamps. 2700°K or consult factory. Specify wattage and color temperature. Also see -LE.
- OG OptiGroove black seamless tapered aluminum lower reflector. White trim, self-flanged. (CP x .70)
- RD Double radio interference filter. Use with -84.
- RF Radio interference filter. Eliminates line feedback.
- WD Wall Dimmer for use with Option -39 (RR90614).

SUBMITTAL DATA

APPROVAL STAMP

JOB NAME _____
TYPE _____
WATTAGE _____ VOLTAGE _____
CATALOG NUMBER _____

LIMITED WARRANTY: CATALOGUED KIRLIN FIXTURES ARE WARRANTED FREE OF DEFECTS IN WORKMANSHIP OR MATERIAL FOR THREE YEARS FROM DATE OF PURCHASE. INSTALLATION TO N.E.C. IN NORMAL USE. Manufacturer at his option will replace or repair such fixture or refund the purchase price on presentation of proof of purchase and defective fixture at the office of manufacturer within three years of original shipment. Liability of manufacturer is limited to the foregoing, and manufacturer shall not be liable for any other damages, direct or indirect, sustained or suffered by purchaser or any person. This warranty is supplied to the buyer in place of all other warranties, expressed or implied. Seller does not warrant as to merchantability or fitness for a particular use, nor will any oral statement constitute a warranty or amend this specific warranty. Abnormal use, abuse of the fixture, improper installation, repair, or modification of the fixture without prior written authorization from the manufacturer or from the warranty office.