

# Shallow 6" Quad Downlights

### Features

#### Lamp

- Designed for:
  - 2 horizontal Quad 13 watt: RR90603.
  - 2 horizontal Quad 18 watt: RR90604.
- 2 pin GX23 base: RR90603.
- 2 pin G24d-2 base: RR90604.
- See Option -43 for lower wattage.

#### Ballast

- Thermally protected, encased and potted standard.
- High power factor standard.
- Single circuit wiring. Optional two-circuit wiring. (See Option -84)
- 120 volt standard or see optional voltages.

- Dimming optional for RR90604. (See Option -39)
- Electronic optional. (See Option -96)
- Visible and easily serviced in all ceilings.

#### Fuse

- Available as Option -FS (single) or -FD (double).

#### Reflector

- Self-flanged low iridescence specular Alzak® aluminum.
- Optional SofTex softly etched Clear, Dune, Champagne Gold or Wheat available.
- Optional Optigroove assembly.

#### Housing

- Acrylic enameled aluminum.
- Cool: Dissipates heat across entire surface area. Ventilated.
- Rustproof: Exceeds 1000 hour ASTM 5% salt spray test.
- Entire luminaire serviced through removable reflector.
- Prewired outlet box; 14 GA (NEC) galvanized steel. UL listed. Accessible through fixture opening.
- Built-in plaster frame.

#### Installation

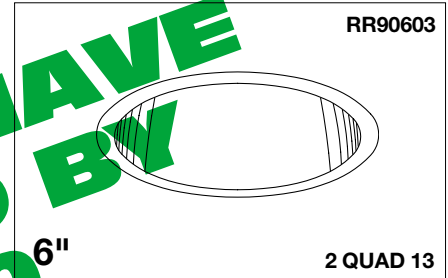
- 27" hanger bars supplied (2).
- Fully adjustable universal mounting brackets supplied (2).
- Reflector and socket bracket adjust as unit for ease of installation.
- Recesses indoor or outdoor in covered locations.

#### UL, C-UL (Canada) Listings

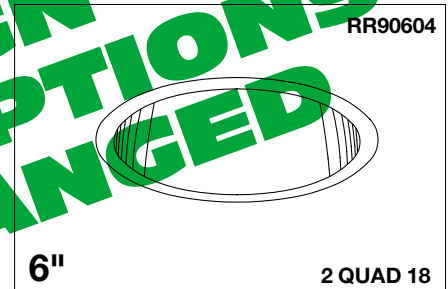
- Wet, damp or dry locations, covered ceilings.
- Through-branch circuit conductors (6 #12).
- Type IC for RR90603. Approved for direct contact with insulation.

#### Three Year Limited Warranty

- Complete standard fixture.



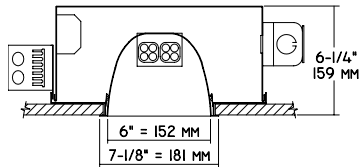
**Type IC Downlight**  
**50% Efficiency**



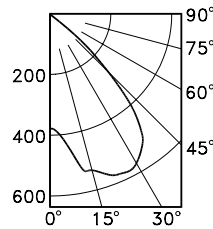
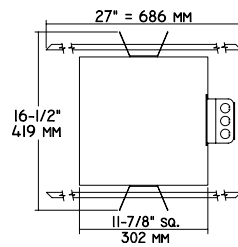
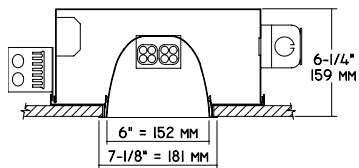
**150 Watt Incandescent Equivalent**  
**Dimming Optional**

### Performance at a Glance

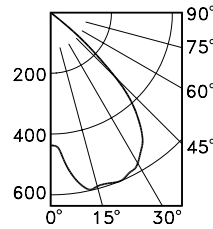
RR90603



RR90604



RR90603 S/MH 1.7



RR90604 S/MH 1.6

#### Cone of Light\*

Ft.	FC	Dia.
6	10.4	9.4
8	5.9	12.5
10	3.8	15.6
12	2.6	18.7
14	1.9	21.8
16	1.5	24.9

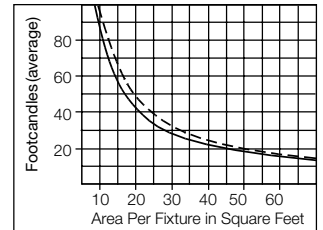
RR90603

#### Cone of Light\*

Ft.	FC	Dia.
6	12.3	8.8
8	6.9	11.8
10	4.4	14.7
12	3.1	17.7
14	2.3	20.6
16	1.7	23.6

RR90604

#### Multiple Fixture FC Calculator\*\*



RR90603 — RR90604 - - -

#### Cone of Light Key

- Ft.** Distance from fixture
- FC** Footcandles (average)
- Dia.** Circle of light at 50% of FC

\* Dia. (in ft.) shown is where FC value is half the FC at nadir.  
\*\* Based on RCR2; ceiling 70%; wall 50%; floor 20%. Use S/MH shown for each fixture. Distribution curves and S/MH data shown are 90° to lamp axis.

# THE KIRLIN COMPANY

3401 EAST JEFFERSON AVENUE • DETROIT, MICHIGAN 48207-4232  
(313) 259-6400 • Fax: (313) 259-9409 OR (313) 259-3121

**CENTURY SERIES**  
**ARCHITECTURAL**  
**COMPACT FLUORESCENT LIGHTING**

MAXIMUM WATTAGE

**2 Quad 13**  
**2 Quad 18**

CATALOG NUMBERS

**RR90603**  
**RR90604**

Detailed Photometry - Installed Fixture

FROM I.T.L. (BOULDER, CO) RR90603: TEST NUMBER 40260  
RR90604: TEST NUMBER 40259

RR90603

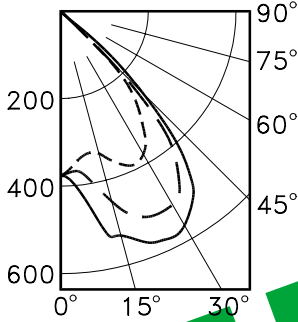
\*LER = 19.5  
•AEC = \$12.34

CANDLEPOWER DISTRIBUTION

	0.0	45.0	90.0	135.0	180.0
0	376	376	376	376	376
5	339	365	397	390	366
15	321	435	530	505	425
25	382	479	570	538	500
35	337	432	526	498	477
45	177	247	277	289	222
55	7	10	8	13	5
65	2	2	2	2	2
75	0	1	2	2	2
85	0	0	0	2	0
90	0	0	0	0	0

COEFFICIENTS OF UTILIZATION

RF	20					
RC	80					
RW	70	50	30	10	10	
1	56	55	53	52	51	49
2	53	50	47	45	47	44
3	49	46	43	40	43	39
4	46	42	38	36	40	35
5	43	38	35	32	37	32
6	40	35	31	29	34	28
7	38	32	29	26	31	26
8	35	30	26	24	29	23
9	33	27	24	21	27	21
10	31	25	22	20	25	20



--- 0° S/MH 1.4  
--- 90° S/MH 1.7  
--- 180° S/MH 1.6  
EFFICIENCY = 60.0%

RR90604

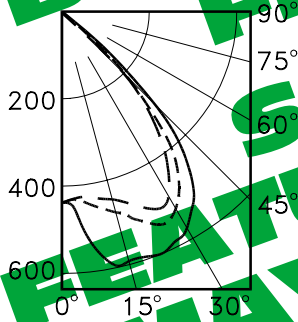
\*LER = 20.0  
•AEC = \$11.98

CANDLEPOWER DISTRIBUTION

	0.0	45.0	90.0	135.0	180.0
0	442	442	442	442	442
5	436	456	469	452	432
15	473	557	588	541	447
25	526	577	590	548	498
35	453	497	519	473	428
45	247	316	316	304	237
55	34	26	18	23	23
65	2	0	1	0	0
75	0	0	0	0	0
85	0	0	0	0	0
90	0	0	0	0	0

COEFFICIENTS OF UTILIZATION

RF	50					
RC	50					
RW	70	50	30	10	10	
1	46	44	43	42	42	41
2	43	41	39	37	38	36
3	40	37	35	33	35	32
4	37	34	31	29	32	29
5	35	31	28	26	30	27
6	33	28	25	23	27	25
7	31	26	23	21	25	21
8	29	24	21	19	23	19
9	27	22	19	17	22	17
10	25	21	18	16	20	16



--- 0° S/MH 1.5  
--- 90° S/MH 1.6  
--- 180° S/MH 1.4  
EFFICIENCY = 40.5%

Estimated Multipliers

- 90 SofTex Champagne Gold: CP x .90
- 70 SofTex Clear: CP x .93
- 71 SofTex Dune: CP x .87
- 91 SofTex Wheat: CP x .87CP x .85
- OG Black OptiGroove: CP x .75

Options

- 31 White reflector trim, self-flanged.
- 32 Trim extender. Broadens trim flange O.D. by 1".
- 39 Installed Q18 electronic dimming ballast for RR90604. Consult factory for Q13 watt availability and for quantity and type required. Also see -LE and -WD. Indoor use.
- 43 Lower wattage: Specify 2TT7 watt (RR90603); 2TT9 watt (RR90604).
- 45 Gasket above reflector flange. Stops dust streaks on ceiling.
- 58 277 volt 60 Hz. ballast instead.
- 70 SofTex Clear softly etched self-flanged reflector. Resists smudges. (CP x .93)
- 71 SofTex Dune softly etched self-flanged reflector. Resists smudges. (CP x .87)
- 73 Internal emergency "Ni-Cad" battery pack concealed in housing. Controls one lamp. Switch and light unobtrusively located inside reflector. For indoor use.
- 79 Extension collar for up to 2" thick ceilings.
- 82 Sloped ceiling adapter. Specify slope up to 30° in 5° increments.
- 84 Fixture wired for two circuits. See -FD and -RD.
- 90 SofTex Champagne Gold softly etched self-flanged reflector. Resists smudges. (CP x .90)
- 91 SofTex Wheat softly etched self-flanged reflector. Resists smudges. (CP x .87)
- 94 Specular Pewter or other specified custom color self-flanged reflector. Consult factory.
- 96 Regulating electronic high power factor 0°F single circuit standard wattage ballast instead. See Options -84 and -LE.
- 97 Other voltage ballast. Consult factory.
- 98 347 volt 60 Hz. ballast instead. Consult factory for dimming or Q13 electronic.
- 99 Special modification. Consult factory.
- FD Double Fused primary. Replaceable. Use with -84.
- FS Fused primary. Replaceable. Aids servicing.
- LE With 4-pin electronic lamps for use with Options -39 or -96. 2700°K or consult factory. Specify wattage and color temperature.
- LP With lamps. 2700°K standard or consult factory. Specify wattage and °K. Also see Option -LE.
- OG OptiGroove black seamless tapered aluminum assembly. White trim, self-flanged. (CP x .75)
- RD Double radio interference filter. Use with -84.
- RF Radio interference filter. Eliminates line feedback.
- WD Wall Dimmer for use with Option -39 (RR90604; consult factory for RR90603).

SUBMITTAL DATA

APPROVAL STAMP

JOB NAME \_\_\_\_\_  
 TYPE \_\_\_\_\_  
 WATTAGE \_\_\_\_\_ VOLTAGE \_\_\_\_\_  
 CATALOG NUMBER \_\_\_\_\_

LIMITED WARRANTY: CATALOGUED KIRLIN FIXTURES ARE WARRANTED FREE OF DEFECTS IN WORKMANSHIP OR MATERIAL FOR THREE YEARS FROM DATE OF PURCHASE. INSTALLATION TO N.E.C. IS NOT NORMAL USE. Manufacturer at his option will replace or repair such fixture or refund the purchase price on presentation of proof of purchase and defective fixture at the office of manufacturer within three years of original shipment. Liability of manufacturer is limited to the foregoing and manufacturer shall not be liable for any other damages, direct or indirect, sustained or suffered by purchaser or any person. This warranty is supplied to the buyer in place of all other warranties, expressed or implied. Seller does not warrant as to merchantability or fitness for a particular use, nor will any oral statement constitute a warranty or amend this specific warranty. Abnormal use, abuse of the fixture, improper installation, repair, or modification of the fixture without prior written authorization from the manufacturer will render the warranty void.

THESE FIXTURES HAVE BEEN REPLACED BY RR-06006-99 SOME DESIGN OR OPTIONS MAY HAVE CHANGED