

2 Triple 42 Watt with ShatterGuard™: Multi-Wattage / Multi-Voltage

Features

Lamp

- Designed for:
2 horizontal Triple Tube 42 watt.
- Lamp socket suitable for 42, 32 or 26 (electronic) wattages.**
- 4-pin GX24q-3 base: 32, 26 watt.
- 4-pin GX24q-4 base: 42 watt.
- 90% lumen output maintained at ballast minimum operating temperature.
- Flicker-free starting, high light output, excellent color rendering (82 CRI).
- Long 10,000 hour life.
- High efficiency with low operating costs.

Ballast

- Suitable for all wattages from 26 through 42 electronic (non-dimming).**
- Suitable for all voltages from 120 through 277 volt (non-dimming).**
- Regulating electronic high power factor, thermally protected, encased.
- Minimum starting temperature 0°F (-18°C). See Option -CW for cold weather.
- With built-in end of lamp life protection.
- Built-in RIF filter. THD is less than 10%.
- Single circuit wiring. See Option -84 for two-circuit wiring.
- Dimming optional. See Option -39.
- Visible and easily serviced in all ceilings.

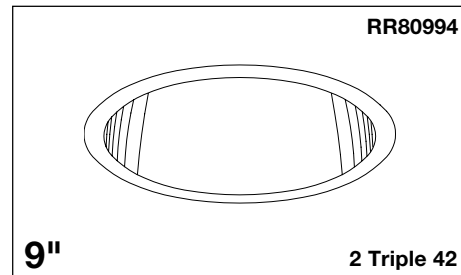
NOTE: Options -43 (18 watt), -39 and -73 require specified voltage and are standard with 120V ballast. For other voltages specify Option -58, -97 or -98.

Fuse

- Available as Option -FS. Also see -FD.

Reflector / ShatterGuard

- Self-flanged low iridescence SofTex™ Alzak® aluminum reflector.
- ShatterGuard 1/8" clear polycarbonate below lamp, secured to reflector.**
- Optional SofTex softly etched Dune, Champagne Gold or Wheat reflectors available.
- Housing**
- Acrylic enameled aluminum.
- Rustproof. Exceeds 1000 hour ASTM 5% salt spray test.
- Cool: Dissipates heat across entire surface area. Ventilated.
- Entire luminaire serviced through removable reflector.
- Prewired outlet box; 14 GA (NEC) galvanized steel. UL listed. Accessible through removable reflector.
- Built-in plaster frame.



**Food Processing, Cafeterias,
Nursing Homes, Hospitals**

**Open Appearance
Shallow 7" Depth**

Installation

- 27" Hanger bars supplied (2).
- Fully adjustable universal mounting brackets supplied (2).
- Reflector and socket bracket adjust as unit for ease of installation.
- Recesses indoor or outdoor in covered locations.

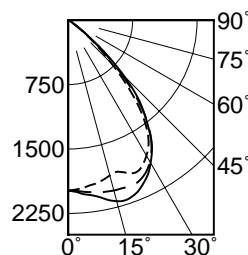
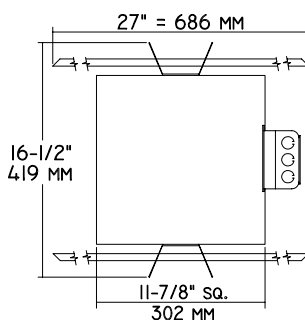
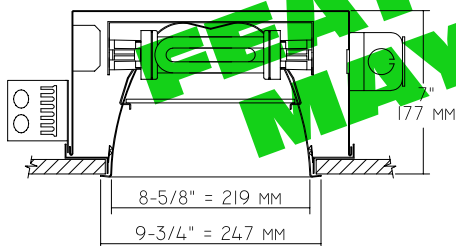
UL, C-UL (Canada) Listings

- Wet, damp or dry locations, covered ceilings.
- Through-branch circuit conductors (6 #12).

Three Year Limited Warranty

- Complete standard fixture.

Performance at a Glance



---	0° S/MH	1.3
---	45° S/MH	1.3
---	90° S/MH	1.3

Cone of Light*

Ft.	FC	Dia.
6	55.1	8.0
8	31.0	10.7
10	19.8	13.4
12	13.8	16.1
14	10.1	18.8
16	7.7	21.5

Cone of Light Key

- Ft. Distance from fixture
- FC Footcandles (average)
- Dia. Circle of light at 50% of FC

* Dia. (in ft.) shown is where FC value is half the FC at nadir.

THE KIRLIN COMPANY

3401 EAST JEFFERSON AVENUE • DETROIT, MICHIGAN 48207-4232
(313) 259-6400 • Fax: (313) 259-9409 OR (313) 259-3121 • www.kirlinlighting.com

**SECOND CENTURY SERIES
TRIPLE TUBE
COMPACT FLUORESCENT LIGHTING**

MAXIMUM WATTAGE

CATALOG NUMBER

2 Triple 42

RR80994

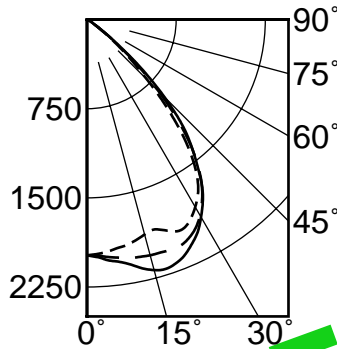
DUE TO OUR CONTINUING EFFORT TO IMPROVE PRODUCTS, TECHNICAL INFORMATION IS SUBJECT TO CHANGE WITHOUT NOTICE.

Alzak® is a registered trademark of ALCOA.

RR80994 RECESSED ROUND: TRIPLE TUBE AMALGAM 42 WATT COMPACT FLUORESCENT**Detailed Photometry - Installed Fixture**

FROM I.T.L. (BOULDER, CO) TEST NUMBER 52520

RR80994 *LER = 40.5
•AEC = \$5.93



--- 0° S/MH 1.3
--- 45° S/MH 1.3
--- 90° S/MH 1.3

EFFICIENCY = 55.2%

Estimated Multipliers

-71 SoftTex Dune: CP x .87
-90 SoftTex Champagne Gold: CP x .90
-91 SoftTex Wheat: CP x .87

CANDLEPOWER DISTRIBUTION

	0.0	45.0	90.0	135.0	180.0
0	1983	1983	1983	1983	1983
5	1960	1981	2005	2025	2033
15	1872	1979	2053	2135	2182
25	1934	1978	2028	2048	2085
35	1615	1681	1681	1666	1680
45	719	769	851	912	921
55	111	113	128	132	130
65	16	17	17	18	19
75	4	4	2	3	2
85	0	0	0	0	0
90	0	0	0	0	0

COEFFICIENTS OF UTILIZATION

RF	70	50	30	15	10
1	62	60	59	57	57
2	58	55	53	51	52
3	55	51	47	45	48
4	51	46	43	40	44
5	48	43	39	36	41
6	45	39	35	32	38
7	42	36	32	29	35
8	40	33	30	27	32
9	37	31	27	25	30
10	35	29	25	23	28

• AEC = Annual Energy Cost per 1000 lumens (based on 3000 hours use @ \$0.08 KWH).

* LER = Luminaire Efficacy Rating

LER = Luminaire Efficacy Rating x Ballast Factor
1000 Lumens x Ballast Factor

Options

- 31 White flange (only) on self-flanged reflector.
- 32 Trim extender. Broadens trim flange O.D. by 1" to cover larger ceiling opening.
- 39 Installed electronic dimming ballasts for 42 watt or add -43 for lower wattages. Specify voltage. Consult factory for brand type. Also see Options -84, -LE and -WD. Indoor use; not available with Option -CW.
- 43 Lower wattage triple tube: Specify 18W (electronic) or 32, 26, 18W (dimming) and voltage.
- 45 Gasket above reflector flange. Stops dust streaks on ceiling.
- 58 277 volt 60 Hz. ballast instead. For use with Options -39, -43 or -73.
- 71 SoftTex Dune softly etched self-flanged reflector. (CP x .87)
- 73¹ Internal emergency "Ni-Cad" battery pack concealed in housing. Specify voltage. Controls one lamp. Switch and light unobtrusively located inside reflector. For indoor use.
- 74¹ Two lamp internal emergency "Ni-Cad" battery pack. Specify voltage. Switch and light unobtrusively located inside reflector. Indoor use. Consult factory for 42 watt.
- 79 Extension collar for up to 2" thick ceilings.
- 82 Sloped ceiling adapter. Specify slope in 5° increments up to 30°.
- 84 Fixture wired for two circuits. See Option -FD.
- 90 SoftTex Champagne Gold softly etched self-flanged reflector. (CP x .90)
- 91 SoftTex Wheat softly etched self-flanged reflector. (CP x .87)
- 94 Custom color self-flanged reflector. Consult factory.
- 97 Other voltage ballast. Consult factory. Use with Options -39, -43, or -73.
- 98 347 volt 60 Hz. ballast instead. Consult factory for dimming. Use with -39, -43, or -73.
- 99 Special modification. Consult factory.
- CW Cold weather -22°F (-30°C) ballast instead. Not available with Option -39.
- FD Double Fused primary. Replaceable. Use with Option -84.
- FS Fused. Replaceable. Aids servicing.
- LE With 4-pin electronic Triple Tube amalgam lamps. 82 CRI and 10,000 hour life. 3500°K or consult factory. Specify wattage and color temperature.
- WD Wall Dimmer for use with Option -39. Consult factory for type and quantity required.

¹ Housing size increases to 13-1/4" square x 8-3/8" with Option -73 or -74.

SUBMITTAL DATA**APPROVAL STAMP**

JOB NAME _____

TYPE _____

WATTAGE _____ VOLTAGE _____

CATALOG NUMBER _____

LIMITED WARRANTY: CATALOGED KIRLIN FIXTURES ARE WARRANTED FREE OF DEFECTS IN WORKMANSHIP OR MATERIAL FOR THREE YEARS FROM DATE OF PURCHASE, INSTALLATION, E.C., IN NORMAL USE. Manufacturer at his option will replace or repair such fixture or refund the purchase price on presentation of proof of purchase and defective fixture at the office of manufacturer within three years of original shipment. Liability of manufacturer is limited to the foregoing, and manufacturer shall not be liable for any other damages, direct or indirect, sustained or suffered by purchaser or any person. This warranty is supplied to the purchaser as part of the fixture and is not a separate document. It will apply only to the fixture as shown on the drawing and as installed. Any modification of the fixture without prior written authorization from the manufacturer will render the warranty void.