

Regressed Lens QL Induction Lamp Luminaires

Features

Lamp (Included)

- 1 vertical QL 85 watt (by Philips).
- Electrode-less induction lamp with Power Coupler.
- Extra long 100,000 hour life.
- Flicker-free instant-on, high light output, excellent color rendering (>80 CRI).
- Indoor or outdoor use. -30°F rated.
- 3000°K standard. Add Option -LT for 4000°K.
- High efficiency with low operating costs.
- Resistant to voltage fluctuation.
- Vibration resistant.
- See Option -43 for 55 watt version.

Ballast

- Electronic high frequency generator.
- 120 volt standard.
- For 240 volt, specify Option -97.

Fuse

- Fused primary standard. Renewable. Serviceable from J-box.

Reflector

- Specular Alzak® aluminum.

Trim Assembly

- Seamless tapered black OptiGroove with white flange. Self-flanged trim.

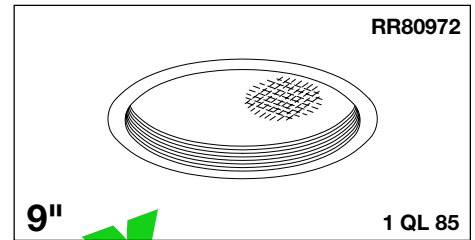
- Regressed, prismatic, tempered low brightness C#73 spread distribution lens.
- Torsion springs retain snug fit to ceiling.
- White grooveless flare trim, flat trim or eggcrate louver available. See Options.
- Acrylic, polycarbonate, Anopal, clear, fresnel or Holophane lens available. See Options.

Housing

- Acrylic enameled aluminum.
- Cool. Dissipates heat across entire surface area. Ventilated.
- Rustproof: Exceeds 1000 hour ASTM 5% salt spray test.
- Entire luminaire serviced through removable trim assembly.
- Rewired outlet box: 14GA (NEC) galvanized steel. UL listed. Accessible through fixture opening.
- Built-in plaster frame.

Installation

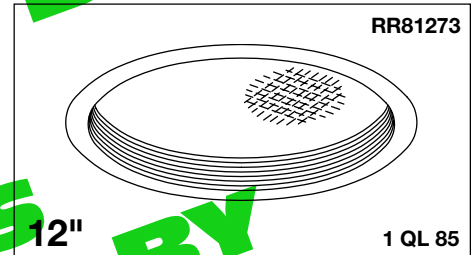
- 27" hanger bars supplied (2).
- Fully adjustable universal mounting brackets supplied (2).
- Recesses indoor or outdoor in covered locations.



9"

1 QL 85

Shallow, Compact, Efficient



12"

1 QL 85

100,000 Hour Operation

UL, C-UL (Canada) Listings

- Wet, damp or dry locations, covered ceilings.
- Through-branch circuit conductors (6 #12).

Three Year Limited Warranty

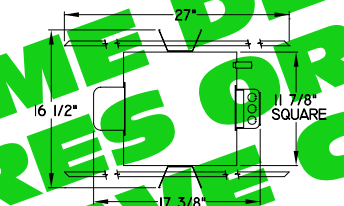
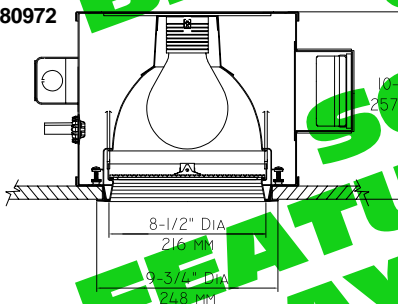
- Complete standard fixture.

Thermal Protection (Per Current NEC)

- Thermal protector included.

Performance at a Glance

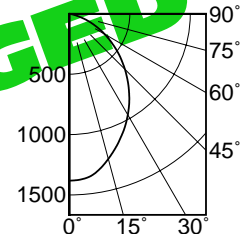
RR80972



Cones of Light*

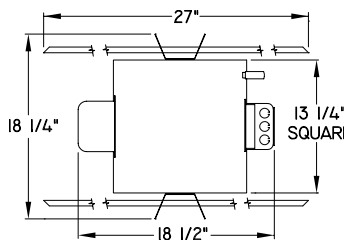
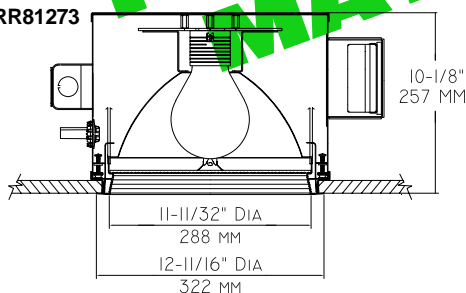
| Ft. | FC | Dia. |
|-----|------|------|
| 6 | 38.4 | 6.4 |
| 8 | 21.6 | 8.5 |
| 10 | 13.8 | 10.7 |
| 12 | 9.6 | 12.8 |
| 14 | 7.1 | 14.9 |
| 16 | 5.4 | 17.1 |

RR80972



RR80972 S/MH 1.1

RR81273



Cones of Light*

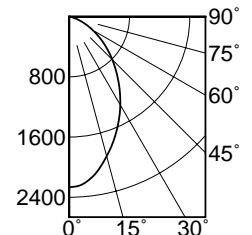
| Ft. | FC | Dia. |
|-----|------|------|
| 6 | 63.0 | 5.7 |
| 8 | 35.4 | 7.6 |
| 10 | 22.7 | 9.5 |
| 12 | 15.8 | 11.4 |
| 14 | 11.6 | 13.2 |
| 16 | 8.9 | 15.1 |

RR81273

Cones of Light Key

- Ft. Distance from fixture
- FC Footcandles (average)
- Dia. Circle of light at 50% of FC

* Dia. (in ft.) shown is where FC value is half the FC at nadir.



RR81273 S/MH 0.9

THE KIRLIN COMPANY

3401 EAST JEFFERSON AVENUE • DETROIT, MICHIGAN 48207-4232
(313) 259-6400 • Fax: (313) 259-9409 OR (313) 259-3121 • www.light-link.com/kirlin

SECOND CENTURY SERIES
QL INDUCTION LIGHTING

VOLTAGE

120V
120V

MAXIMUM WATTAGE

QL 85
QL 85

CATALOG NUMBERS

RR80972
RR81273

THE KIRLIN COMPANY RESERVES THE RIGHT TO CHANGE, WITHOUT NOTICE, DETAILS OR SPECIFICATIONS IN PRODUCT DESIGN.

Alzak® is a registered trademark of ALCOA.

