

Dual Reflector Shallow Downlight

Features

Lamp

- Designed for:
 - 2 horizontal Triple Tube 42 watt.
- Lamp socket suitable for 42, 32 or 26 (electronic) wattages.**
- 4-pin GX24q-3 base: 32, 26 watt.
- 4-pin GX24q-4 base: 42 watt.
- 90% lumen output maintained at ballast minimum operating temperature.
- Flicker-free starting, high light output, excellent color rendering (82 CRI).
- Long 10,000 hour life.
- High efficiency with low operating costs.

Ballast

- Suitable for all wattages from 26 through 42 electronic (non-dimmable).**
- Suitable for all voltages from 120 through 277 volt (non-dimmable).**
- Regulating ballast with power factor, thermal protection, enclosed.
- Minimum starting temperature: 8°C. See Option -C for warmer.
- With ballast life protection.
- Built-in thermal THD is less than 10%.
- Single circuit wiring. See Option -84 for two-circuit wiring.
- Dimming optional. See Option -39.
- Visible and easily serviced in all applications.

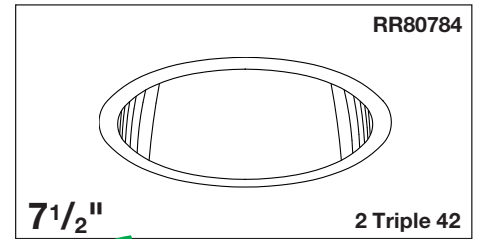
NOTE: Options -43 (18 watt), -39 and -73 require specific voltage and are standard with 120V ballast. For other voltages specify Options -58, -97 or -98.

Fuse

- Available as Option -FS. Also see -FD.

Reflector

- Clear specular Alzak® aluminum upper reflector.
- SofTex softly etched aluminum lower reflector. Self-flanged. Non-reflective. Resists fingerprint smudges.
- Optional Soft-Drop Champagne Coat, Resistant to all white cleaning products (Option -6 for black specular finish, or OptiGroom for non-reflective finish).
- Available in White or White with Hazy Glass™ (Option -6 for black specular finish, or OptiGroom for non-reflective finish).



7 1/2"

2 Triple 42

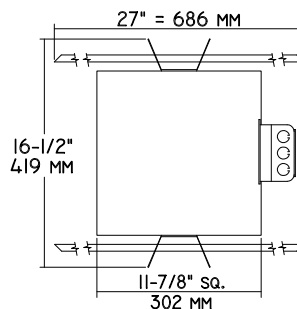
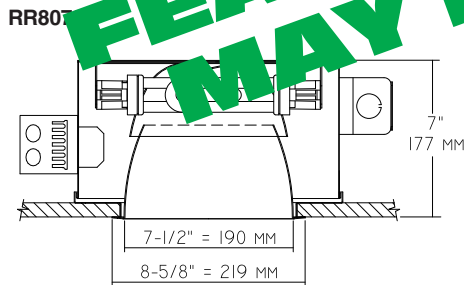
Multi-Wattage and Multi-Voltage Ballast Standard
Reflector Color Finishes
Shallow Plenum

Installation

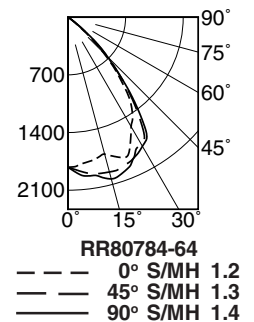
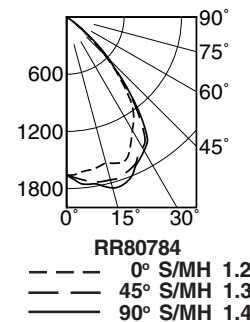
- 27" hanger bars supplied (2).
- Adjustable universal mounting brackets supplied.
- Recessed into ceiling or floor in covered locations.
- UL Classified (Canada Listed) for Wet, damp or dry locations covered ceiling or floor.
- Use 12 AWG or larger branch circuit conductors (6 #12).
- 3 Year Limited Warranty**
- Complete standard fixture.

THIS FIXTURE HAS BEEN REPLACED BY FR-07018 SOME DESIGN FEATURES OR OPTIONS MAY HAVE CHANGED

Performance at a Glance



Cone of Light Key
 Ft. Distance from fixture
 FC Footcandles (average)
 Dia. Circle of light at 50% of FC



Cone of Light*

Ft.	FC	Dia.
6	46.1	8.0
8	25.9	10.6
10	16.6	13.3
12	11.5	15.9
14	8.5	18.6
16	6.5	21.2

Cone of Light*

Ft.	FC	Dia.
6	50.3	8.1
8	28.5	10.8
10	18.2	13.5
12	12.6	16.1
14	9.3	18.8
16	7.1	21.5

* Dia. (in ft.) shown is where FC value is half the FC at nadir.

THE KIRLIN COMPANY

3401 EAST JEFFERSON AVENUE • DETROIT, MICHIGAN 48207-4232
 (313) 259-6400 • Fax: (313) 259-9409 OR (313) 259-3121 • www.light-link.com/kirlin

SECOND CENTURY SERIES
 TRIPLE TUBE
 COMPACT FLUORESCENT LIGHTING

MAXIMUM WATTAGE

CATALOG NUMBERS

2 Triple 42

RR80784

THE KIRLIN COMPANY RESERVES THE RIGHT TO CHANGE, WITHOUT NOTICE, DETAILS OR SPECIFICATIONS IN PRODUCT DESIGN.

Alzak® is a registered trademark of ALCOA.

RR80784 RECESSED ROUND: TRIPLE TUBE 42 WATT (MAXIMUM) COMPACT FLUORESCENT

Detailed Photometry - Installed Fixture

FROM I.T.L. (BOULDER, CO) RR80784: TEST NUMBER 50897
RR80784-64: TEST NUMBER 50898

RR80784

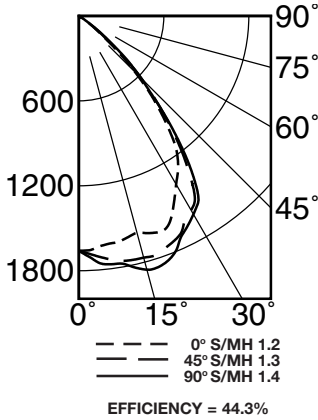
*LER = 30.4
*AEC = \$7.90

CANDLEPOWER DISTRIBUTION

	0.0	45.0	90.0	135.0	180.0
0	1659	1659	1659	1659	1659
5	1635	1666	1709	1741	1755
15	1586	1713	1768	1822	1856
25	1553	1585	1699	1714	1715
35	1215	1306	1362	1412	1429
45	562	602	626	626	618
55	71	71	73	84	86
65	20	19	18	17	17
75	8	7	6	6	6
85	0	0	0	0	0
90	0	0	0	0	0

COEFFICIENTS OF UTILIZATION

RF	20						
	80			50			
RC	70	50	30	10	50	30	10
1	50	49	47	46	46	45	44
2	47	45	42	41	42	41	39
3	44	41	38	36	39	37	35
4	41	37	35	34	36	34	32
5	39	34	31	30	33	31	29
6	36	33	30	29	31	28	26
7	32	28	26	24	27	26	24
8	27	24	22	21	24	22	22
9	30	25	22	21	23	22	20
10	24	21	19	19	23	20	19



* LER = Luminaire Efficacy Rating
* AEC = Annual Energy Cost per 1000 lumens (based on 3000 hours use @ \$0.08 KWH).

RR80784-64

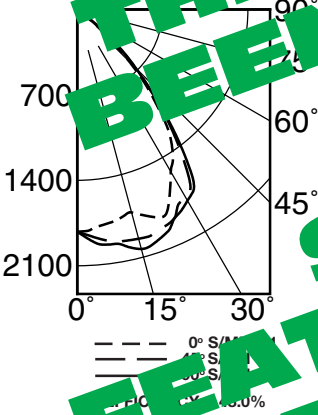
*LER = 30.4
*AEC = \$7.90

CANDLEPOWER DISTRIBUTION

	0.0	45.0	90.0	135.0	180.0
0	1821	1821	1821	1821	1821
5	1721	1828	1881	1916	1929
15	1721	1885	1945	2000	2022
25	1771	1742	1800	1880	1888
35	1352	1400	1450	1609	1627
45	600	630	683	686	680
55	71	71	73	84	86
65	20	19	18	17	17
75	8	7	6	6	6
85	0	0	0	0	0
90	0	0	0	0	0

COEFFICIENTS OF UTILIZATION

RF	20						
	80			50			
RC	70	50	30	10	50	30	10
1	54	50	46	44	50	49	47
2	51	47	46	44	46	44	42
3	48	44	42	40	43	41	39
4	45	41	39	37	40	37	35
5	42	38	36	34	36	34	32
6	39	35	32	29	34	31	29
7	35	32	29	27	31	28	26
8	35	30	27	24	29	26	24
9	33	28	25	22	27	24	22
10	31	26	23	21	25	22	21



Estimate Multiplier: -71 SofTex Dune: CP x .90
-72 Black Alzak: CP x .77
-73 SofTex Pewter: CP x .87
-74 SofTex Champagne Gold: CP x .90
-91 SofTex Wheat: CP x .88
-90 OptiGroove: CP x .83

THIS FIXTURE HAS BEEN REPLACED BY RR-07018 SOME DESIGN OPTIONS MAY HAVE CHANGED

Options

- 30 White lower reflector, see -31.
- 31 White flange (only) on lower reflector.
- 32 Trim extender. Broadens flange O.D. by 1".
- 39 Installed electronic dimming ballast for 42 watt or add Option -43 for lower wattages. **Specify voltage.** Consult factory for brand type. Also see Options -84, -LE and -WD. Indoor use; not available with Option -CW.
- 43 Lower wattage triple tube: Specify 18W (electronic) or 32, 26, 18W (dimming) and **voltage.**
- 45 Gasket above reflector flange.
- 58 277 volt 60 Hz. ballast instead. For use with Options -39, -43 or -73.
- 64 Essence™ Clear specular Alzak® lower reflector.

- 71 SofTex Dune self-flanged lower reflector.
- 72 Black specular Alzak self-flanged lower reflector.
- 73 Internal emergency "Ni-Cad" battery pack concealed in housing. **Specify voltage.** Controls one lamp. Switch and light located inside reflector. Indoor use.
- 74 Two lamp internal emergency "Ni-Cad" battery pack. **Specify voltage.** Switch and light located inside reflector. Indoor use. Consult factory for 42 watt.
- 77 SofTex Pewter self-flanged lower reflector.
- 82 Sloped ceiling adapter. Specify slope in 5° increments up to 30°.
- 84 Fixture wired for two circuits. See Option -FD.
- 90 SofTex Champagne Gold self-flanged lower cone.
- 91 SofTex Wheat self-flanged lower cone.
- 94 Custom color lower reflector. Consult factory.
- 97 Other voltage ballast. Consult factory. Use with

- Options -39, -43, or -73.
- 98 347 volt 60 Hz. ballast instead. Consult factory for dimming. Use with Options -39, -43, or -73.
- 99 Special modification. Consult factory.
- CW Cold weather -22°F (-30°C) ballast instead. Not available with Option -39.
- FD Double Fused primary. Replaceable. Use with Option -84.
- FS Fused. Replaceable. Aids servicing.
- LE With 4-pin electronic Triple Tube amalgam lamp(s). 82 CRI and 10,000 hour life. Consult factory for compatibility with GE 42 watt lamps. 3500°K or consult factory. Specify wattage and color temperature.
- OG OptiGroove black seamless tapered aluminum lower cone. White trim, self-flanged.
- WD Wall Dimmer for use with Option -39. Consult factory for type and quantity required.

SUBMITTAL DATA

APPROVAL STAMP

JOB NAME _____

TYPE _____

WATTAGE _____ VOLTAGE _____

CATALOG NUMBER _____

LIMITED WARRANTY: CATALOGUED KIRLIN FIXTURES ARE WARRANTED FREE OF DEFECTS IN WORKMANSHIP OR MATERIAL FOR THREE YEARS FROM DATE OF PURCHASE. INSTALLATION, ETC., IS NOT NORMAL USE. MANUFACTURER AT HIS OPTION WILL REPAIR OR REPLACE SUCH FIXTURE OR RETURN THE PURCHASE PRICE ON PRESENTATION OF PROOF OF PURCHASE AND DEFECTIVE FIXTURE AT THE OFFICE OF MANUFACTURER WITHIN THE REAR YEARS OF ORIGINAL INVENTORY. LIABILITY OF MANUFACTURER IS LIMITED TO THE FOREGOING, AND MANUFACTURER SHALL NOT BE LIABLE FOR ANY OTHER DAMAGES, DIRECT OR INDIRECT, SUSTAINED OR SUFFERED BY PURCHASER OR ANY PERSON. THIS WARRANTY IS SUPPLIED ON THE UNDERSTANDING THAT OTHER WARRANTIES, EXPRESS OR IMPLIED, SELLER DOES NOT WARRANT AS TO MERCHANTABILITY OR FITNESS FOR A PARTICULAR USE, NOR WARRANTY OR STATEMENT CONSTITUTE A WARRANTY OR AID IN THE SPECIFIC WARRANTY. ABNORMAL USE, ABUSE OF THE FIXTURE, IMPROPER INSTALLATION, OR REPAIR, OR MODIFICATION OF THE FIXTURE WITHOUT PRIOR WRITTEN AUTHORIZATION FROM THE MANUFACTURER WILL VOID THE WARRANTY. ©2001