

"Essence" Specular Alzak® Reflector 2-42 Triple Tube in 7 1/2" Aperture

Features

Lamp

- Designed for:
 - 2 horizontal Triple Tube 42 watt.
- 4 pin GX24q-4 base. Consult factory for compatibility with G.E. 42 watt lamps.
- 90% lumen output maintained at ballast minimum operating temperature.
- Flicker-free starting, high light output, excellent color rendering (82 CRI).
- Long 10,000 hour life.
- High efficiency with low operating costs.
- See Option -48 for lower wattage, 2-32, 2-26 or 2-18 Triple Tube. Also see Photometric Performance.

Ballast

- Regulating electronic high power factor, thermally protected, encased.
- Minimum starting temperature 0°F (-18°C).
- Standard with built-in end of lamp life (EOL) protection circuit.
- Integral fuse. Also see Options -FS and -FD for separate in-line fuse.
- Built-in RIF filter.
- 120 volt standard or see optional voltages.

- Single circuit wiring. See Option -84 for two-circuit wiring.
- Dimming optional. See Option -39. (Consult factory for 18 watt version).
- Visible and easily serviced in all ceilings.

Reflector

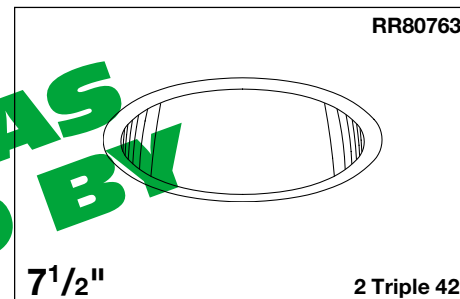
- "Essence" low brightness, low iridescence specular Alzak aluminum reflector.
- One-piece, self-flanged.
- Optional OptiGroove assembly available.
- See RR80764 for all SoTEx finishes.

Housing

- Acrylic enameled aluminum.
- Cool: Dissipates heat across entire surface area. Ventilated.
- Rustproof: Exceeds 1000 hour ASTM 5% salt spray test.
- Entire luminaire serviced through removable reflector.
- Prewired outlet box; 14GA (NEC) galvanized steel, UL listed. Accessible through fixture opening.
- Built-in plaster frame.

Installation

- 27" hanger bars supplied (2).
- Fully adjustable universal mounting brackets supplied (2).

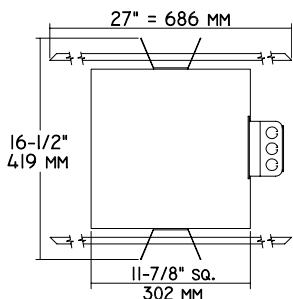
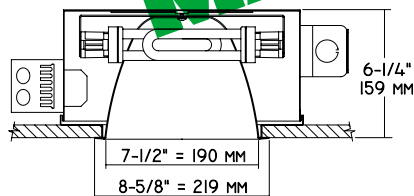


**Exceptional Cut-Off
Dimming and Lower Wattages**

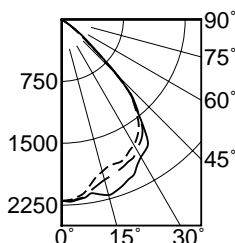
- May be installed in ceilings up to 1-1/4" thick, or see Option -79.
 - Ceiling cut-out: 8" (203mm) diameter.
 - Reflector and socket bracket adjust as unit for ease of installation.
 - Recesses indoor or outdoor in covered locations.
- UL, C-UL (Canada) Listings**
- Wet, damp or dry locations, covered ceilings.
 - Through-branch circuit conductors (6 #12).
- Three Year Limited Warranty**
- Complete standard fixture.

Performance at a Glance

RR80763



Cone of Light Key
Ft. Distance from fixture
FC Footcandles (average)
Dia. Circle of light at 50% of FC
 * Dia. (in ft.) shown is where FC value is half the FC at nadir.

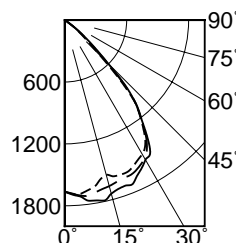


RR80763 (2-42W)

---	0° S/MH	1.2
---	45° S/MH	1.2
---	90° S/MH	1.3

Cone of Light*

Ft.	FC	Dia.
6	61.0	7.5
8	34.3	10.0
10	22.0	12.4
12	15.3	14.9
14	11.2	17.4
16	8.6	19.9

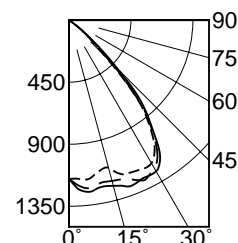


RR80763-43 (2-32W)

---	0° S/MH	1.3
---	45° S/MH	1.3
---	90° S/MH	1.3

Cone of Light*

Ft.	FC	Dia.
6	46.2	8.0
8	26.0	10.6
10	16.6	13.3
12	11.5	16.0
14	8.5	18.6
16	6.5	21.3



RR80763-43 (2-26W)

---	0° S/MH	1.4
---	45° S/MH	1.5
---	90° S/MH	1.5

Cone of Light*

Ft.	FC	Dia.
6	32.0	8.6
8	18.0	11.5
10	11.5	14.4
12	8.0	17.2
14	5.9	20.1
16	4.5	23.0

THE KIRLIN COMPANY

3401 EAST JEFFERSON AVENUE • DETROIT, MICHIGAN 48207-4232
 (313) 259-6400 • Fax: (313) 259-9409 OR (313) 259-3121 • www.light-link.com/kirlin

**SECOND CENTURY SERIES
TRIPLE TUBE
COMPACT FLUORESCENT LIGHTING**

MAXIMUM WATTAGE

CATALOG NUMBER

2 Triple 42

RR80763

DUE TO OUR CONTINUING EFFORT TO IMPROVE PRODUCTS, TECHNICAL INFORMATION IS SUBJECT TO CHANGE WITHOUT NOTICE.

Alzak® is a registered trademark of ALCOA.

RR80763

RECESSED ROUND: TRIPLE TUBE 42 WATT COMPACT FLUORESCENT

Detailed Photometry - Installed Fixture

FROM I.T.L. (BOULDER, CO)

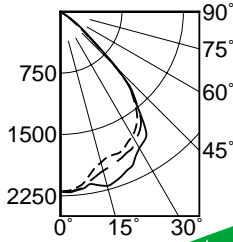
RR80763 (2-42W): ITL TEST NUMBER 48587
 RR80763-43 (2-32W): ITL TEST NUMBER 48585
 RR80763-43 (2-26W): ITL TEST NUMBER 48671

RR80763 (2-42 WATT)

*LER = 33.7
 •AEC = \$7.13

--- 0° S/MH 1.2
 --- 45° S/MH 1.2
 --- 90° S/MH 1.3

EFFICIENCY = 55.5%



CANDLEPOWER DISTRIBUTION					
	0.0	22.5	45.0	67.5	90.0
0	2197	2197	2197	2197	2197
5	2160	2172	2183	2199	2194
15	1908	1982	2012	2080	2203
25	1837	1866	1906	1978	2076
35	1629	1681	1707	1765	1828
45	919	942	955	959	958
55	101	106	102	107	153
65	0	0	0	0	0
75	0	0	0	0	0
85	0	0	0	0	0
90	0	0	0	0	0

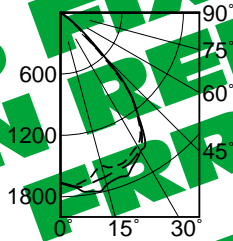
COEFFICIENTS OF UTILIZATION							
RF	20						
RC	0	50	30	10	10		
0	62	61	69	68	57	56	55
1	59	56	63	51	53	51	49
2	55	51	48	45	49	46	44
3	52	47	43	40	45	42	40
4	48	43	39	36	41	38	36
5	43	38	35	33	38	35	32
6	40	34	30	27	33	29	27
7	37	31	27	25	30	27	25
8	35	29	25	23	28	25	23

RR80763-43 (2-32 WATT)

*LER = 38.8
 •AEC = \$6.19

--- 0° S/MH 1.3
 --- 45° S/MH 1.3
 --- 90° S/MH 1.3

EFFICIENCY = 57.4%



CANDLEPOWER DISTRIBUTION					
	0.0	22.5	45.0	67.5	90.0
0	1663	1663	1663	1663	1663
5	1633	1695	1705	1713	1716
15	1552	1618	1666	1714	1742
25	1346	1358	1370	1389	1401
35	965	1053	1116	1168	1202
45	481	504	521	532	532
55	44	43	50	51	91
65	1	0	1	1	1
75	0	0	0	0	0
85	0	0	0	0	0
90	0	0	0	0	0

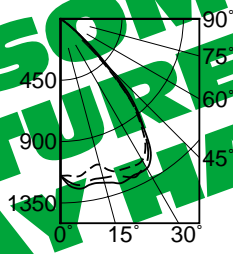
COEFFICIENTS OF UTILIZATION							
RF	20						
RC	0	50	30	10	10		
0	65	63	61	60	24	30	27
1	61	58	56	53	59	56	51
2	57	53	50	47	56	53	48
3	54	49	45	42	51	48	45
4	50	45	41	38	47	44	42
5	47	41	37	35	43	40	38
6	44	38	34	32	40	37	34
7	42	35	32	29	37	34	31
8	39	33	29	27	34	31	29
9	37	31	27	25	32	29	26

RR80763-43 (2-26 WATT)

*LER = 34.2
 •AEC = \$7.02

--- 0° S/MH 1.4
 --- 45° S/MH 1.5
 --- 90° S/MH 1.5

EFFICIENCY = 58.8%



CANDLEPOWER DISTRIBUTION					
	0.0	22.5	45.0	67.5	90.0
0	1151	1151	1151	1151	1151
5	1151	1185	1219	1239	1246
15	1077	1165	1207	1232	1244
25	997	1256	1282	1280	1266
35	875	1104	1103	1116	1139
45	376	392	427	471	499
55	36	30	33	28	27
65	1	0	1	1	0
75	0	0	0	0	0
85	0	0	0	0	0
90	0	0	0	0	0

COEFFICIENTS OF UTILIZATION							
RF	20						
RC	80	50	30	10	50	30	10
0	66	64	63	61	61	60	59
1	62	59	56	54	56	54	52
2	59	54	51	48	52	49	47
3	55	50	46	43	48	45	42
4	52	46	42	39	44	41	38
5	48	42	38	35	41	37	35
6	45	39	35	32	38	34	32
7	43	36	32	29	35	32	29
8	40	33	29	27	33	29	27
9	38	31	27	25	30	27	24

Estimated Multiplier
 -OG OptiGroove: CP x .75

* LER = Luminaire Efficiency Rating
 LER = Luminaire Effic. x Total Lamp Lumens x Effic. Factor
 Input Watts

* AEC = Annual Energy Cost per
 1000 lumens (based on 3000
 hours use @ \$0.08 KWH).

THIS FIXTURE HAS BEEN REPLACED BY RR-01009 SOME DESIGN FEATURES OR OPTIONS MAY HAVE CHANGED

Options

- 31 White reflector trim, self-flanged.
- 32 Trim extender. Broadens trim flange O.D. by 1" to cover larger ceiling opening.
- 39 Installed electronic dimming ballast(s). Consult factory for 18 watt availability. Also see -84, -LE and -WD. Indoor use.
- 43 Lower wattage triple tube. Specify: 2-32, 2-26 or 2-18 watt. See photometry above.
- 45 Gasket above reflector flange. Stops dust streaks on ceiling.
- 58 277 volt 60 Hz. ballast instead.
- 73 Internal emergency "Ni-Cad" battery pack concealed in housing. One lamp operation.

- Switch and light unobtrusively located inside reflector. For indoor use.
- 74 Internal emergency "Ni-Cad" battery pack concealed in housing for 32, 26 or 18 watt. Consult factory for 42 watt. Two lamp operation. Switch and light unobtrusively located inside reflector. For indoor use.
- 79 Extension collar for up to 2" thick ceilings.
- 82 Sloped ceiling adapter. Specify slope in 5° increments up to 30°.
- 84 Fixture wired for two circuits. See Option -FD.
- 94 Specified custom color self-flanged reflector. Consult factory. See RR80764 for all Softex colors.
- 97 Other voltage ballast. Consult factory.

- 98 347 volt 60 Hz. ballast instead. Consult factory for dimming.
- 99 Special modification. Consult factory.
- FD Double fused primary. One per ballast. Replaceable. Aids servicing. For use with Option -84.
- FS Single fused primary. Replaceable. Aids servicing.
- LE With 4-pin electronic Triple Tube amalgam lamps. 82 CRI and 10,000 hour life. Consult factory for compatibility with GE 42 watt lamps. 3500°K or consult factory for 2700°K, 3000°K or 4100°K. Specify wattage and color temperature.
- OG OptiGroove black seamless tapered aluminum assembly. White trim, self-flanged. (CP x .75)
- WD Wall Dimmer for use with Option -39. Consult factory for type and quantity required.

SUBMITTAL DATA

JOB NAME _____

TYPE _____

WATTAGE _____ VOLTAGE _____

CATALOG NUMBER _____

APPROVAL STAMP

LIMITED WARRANTY: CATALOGUED KIRLIN FIXTURES ARE WARRANTED FREE OF DEFECTS IN WORKMANSHIP OR MATERIAL FOR THREE YEARS FROM DATE OF PURCHASE. INSTALLATION, ETC., IS NOT INCLUDED. THE PURCHASER'S PRICE OF PURCHASE AND DEFECTIVE FIXTURE AT THE OFFICE OF MANUFACTURER WITHIN THE YEARS OF ORIGINAL SHIPMENT. LIABILITY OF MANUFACTURER IS LIMITED TO THE FOREGOING, AND MANUFACTURER SHALL NOT BE LIABLE FOR ANY OTHER DAMAGES, DIRECT OR INDIRECT, SUSTAINED OR SUFFERED BY PURCHASER OR ANY PERSON. THIS WARRANTY IS SUPPLIED FOR THE EXCLUSIVE USE OF THE PURCHASER. WARRANTIES ARE NOT VALID UNLESS THE PURCHASER HAS ACCEPTED THE WARRANTY. MANUFACTURER WILL NOT BE RESPONSIBLE FOR ANY DAMAGES, DIRECT OR INDIRECT, SUSTAINED OR SUFFERED BY PURCHASER OR ANY PERSON. THIS WARRANTY IS SUPPLIED FOR THE EXCLUSIVE USE OF THE PURCHASER.