

## Dual Reflector Type IC Open Downlight

### Features

#### Lamp

- Designed for:
  - 1 vertical Triple Tube 32 watt.
- 4 pin GX24q-3 base.
- 90% lumen output maintained at ballast minimum operating temperature.
- Flicker-free starting, high light output, excellent color rendering (82 CRI).
- Long 10,000 hour life.
- High efficiency with low operating costs.
- See Option -43 for lower wattage.

#### Ballast

- Regulating electronic high power factor, thermally protected, enclosed.
- Starting temperature -5° to -10°C (14°-23°F). See Option -CW for cold weather.
- Built-in RIF filter. THD is less than 10%.
- 120 volt standard or see optional voltages.
- Dimming optional. See Option -39.
- Visible and easily serviced in all ceilings.

#### Fuse

- Available as Option -FS.

#### Reflector

- Clear specular Alzak® aluminum upper reflector.

- Self-flanged low iridescence specular Alzak aluminum lower reflector.
- Optional SofTex softly etched Clear, Dune, Champagne Gold or Wheat lower reflectors available.
- Optional White, Black Specular Alzak or OptiGroove lower reflectors available.

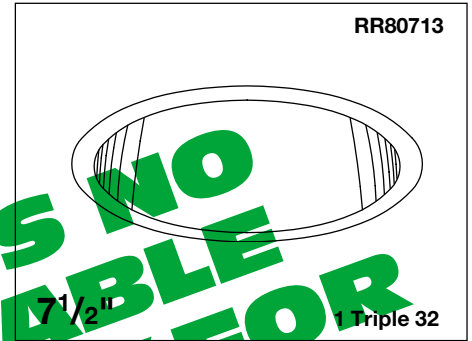
#### Housing

- Acrylic enameled aluminum
- Cool: Dissipates heat across entire surface area. Ventilated.
- Rustproof: Exceeds 1000 hour ASTM 5% salt spray test.
- Entire luminaire serviced through removable reflector.

- Prewired outlet box, 14GA (NEC) galvanized steel. UL listed. Accessible through fixture opening.
- Built-in plaster frame.

#### Installation

- 27" hanger bars supplied (2).
- Fully adjustable universal mounting brackets supplied (2).
- Recesses indoor or outdoor in covered locations.



Vertical Lamp  
Dimming Optional

#### UL, C-UL (Canada) Listings

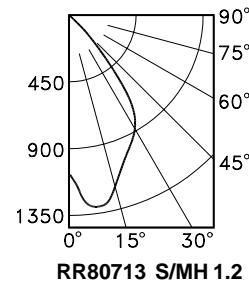
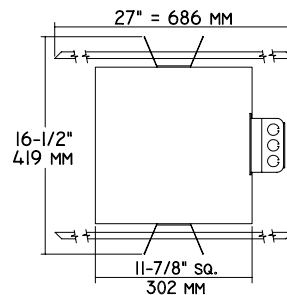
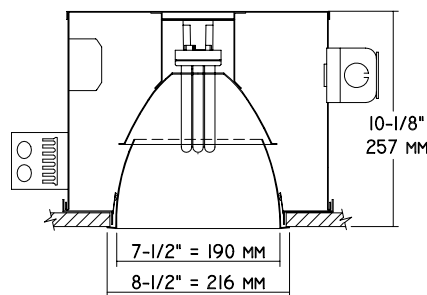
- Wet, damp or dry locations, covered ceilings.
- Through-branch circuit conductors (6 #12).
- Type IC - Approved for direct contact with insulation.

#### Three Year Limited Warranty

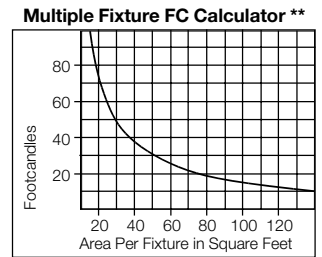
- Complete standard fixture.

### Performance at a Glance

RR80713



RR80713 S/MH 1.2



RR80713

#### Cone of Light\*

Ft.	FC	Dia.
6	29.1	6.7
8	16.3	9.0
10	10.5	11.2
12	7.3	13.4
14	5.3	15.7
16	4.1	17.9

RR80713

#### Cone of Light Key

- Ft.** Distance from fixture
- FC** Footcandles (average)
- Dia.** Circle of light at 50% of FC

\* Dia. (in ft.) shown is where FC value is half the FC at nadir.  
\*\* Based on RCR2; ceiling 70%; wall 50%; floor 20%. Use S/MH shown for each fixture.

## THE KIRLIN COMPANY

3401 EAST JEFFERSON AVENUE • DETROIT, MICHIGAN 48207-4232  
(313) 259-6400 • Fax: (313) 259-9409 OR (313) 259-3121 • www.light-link.com/kirlin

SECOND CENTURY SERIES  
TRIPLE TUBE  
COMPACT FLUORESCENT LIGHTING

MAXIMUM WATTAGE

CATALOG NUMBER

1 Triple 32

RR80713

DUE TO OUR CONTINUING EFFORT TO IMPROVE PRODUCTS, TECHNICAL INFORMATION IS SUBJECT TO CHANGE WITHOUT NOTICE.

Alzak® is a registered trademark of ALCOA.

**RR80713 RECESSED ROUND: TRIPLE TUBE AMALGAM 32 WATT COMPACT FLUORESCENT**

**Detailed Photometry - Installed Fixture**

FROM I.T.L. (BOULDER, CO) TEST NUMBER 42378

**RR80713**

**\*LER = 39.9**

**•AEC = \$6.01**



**CANDLEPOWER DISTRIBUTION**

	0.0	22.5	45.0	67.5	90.0
0	1046	1046	1046	1046	1046
5	1207	1191	1154	1094	1079
15	1196	1201	1170	1185	1221
25	969	1004	958	959	959
35	687	687	613	646	610
45	240	232	191	234	226
55	7	7	7	8	9
65	2	2	2	2	2
75	0	2	2	2	2
85	0	0	0	0	0
90	0	0	0	0	0

**COEFFICIENT OF UTILIZATION**

RW	20							
	80				50			
	70	50	30	10	50	30	10	
1	69	68	66	65	64	63	62	
2	66	62	60	58	59	57	56	
3	62	59	55	52	55	53	51	
4	59	54	50	47	52	49	46	
5	55	50	46	43	48	45	42	
6	52	46	42	39	45	42	39	
7	49	43	39	36	42	39	36	
8	47	40	36	34	39	36	33	
9	44	38	34	31	37	33	31	
10	42	35	32	29	35	31	29	

**Estimated Multipliers**

- 30 White: CP x .90
- 70 SoftTex Clear: CP x .93
- 72 Black Specular Alzak®: CP x .65
- 90 SoftTex Champagne Gold: CP x .90
- 91 SoftTex Wheat: CP x .87
- OG OptiGroove: CP x .70

**\* LER = Luminaire Efficiency Rating**

LER = Luminaire Effic. x Total Lamp Lumens x Ballast Factor / Input Watts

**• AEC = Annual Energy Cost per 1000 lumens (based on 3000 hours use @ \$0.08 KWH).**

**Options**

- 30 White lower reflector, self-flanged. (CP x .90)
- 31 White lower reflector trim, self-flanged.
- 32 Trim extender. Broadens trim flange O.D. by 1" to cover larger ceiling opening.
- 39 Installed electronic dimming ballast. Consult factory for 18 or 26 watt or for quantity and type required. Also see Options -LE and -WD. Indoor use.
- 43 Lower wattage triple tube: Specify 18 or 26 watt.
- 45 Gasket above reflector flange. Stops dust streaks on ceiling.
- 58 277 volt 60 Hz. ballast instead.
- 70 SoftTex Clear softly etched self-flanged lower reflector. Resists smudges. (CP x .93)
- 71 SoftTex Dune softly etched self-flanged lower reflector. Resists smudges. (CP x .87)
- 72 Black Specular Alzak self-flanged lower reflector. (CP x .65)
- 73 Internal emergency "Ni-Cad" battery pack concealed in housing. Switch and visible light unobtrusively located inside upper reflector. For indoor use.
- 79 Extension collar for up to 2" thick ceilings.
- 82 Sloped ceiling adapter. Specify slope in 5° increments up to 30°.
- 90 SoftTex Champagne Gold softly etched self-flanged lower reflector. Resists smudges. (CP x .90)
- 91 SoftTex Wheat softly etched self-flanged lower reflector. Resists smudges. (CP x .87)
- 94 Specular Pewter or Umber or other specified

- custom color self-flanged lower reflector. Consult factory.
- 97 Other voltage ballast. Consult factory.
- 98 347 volt 60 Hz. ballast instead. Consult factory for dimming.
- 99 Special modification. Consult factory.
- CW Cold weather electronic HPF ballast. -18°C to -20°C (0°F to -5°F).
- FS Fused. Replaceable. Aids servicing.
- LE With 4-pin electronic Triple Tube amalgam lamp. 82 CRI and 10,000 hour life. 3500°K or consult factory for 2700°K, 3000°K or 4100°K. Specify wattage and color temperature.
- OG OptiGroove black seamless tapered aluminum lower cone. White trim, self-flanged. (CP x .70)
- WD Wall Dimmer for use with Option -39. Consult factory for use with 18 or 26 watt.

**SUBMITTAL DATA**

JOB NAME \_\_\_\_\_

TYPE \_\_\_\_\_

WATTAGE \_\_\_\_\_ VOLTAGE \_\_\_\_\_

CATALOG NUMBER \_\_\_\_\_

**APPROVAL STAMP**

LIMITED WARRANTY: CATALOGED KIRLIN FIXTURES ARE WARRANTED FREE OF DEFECTS IN WORKMANSHIP OR MATERIAL FOR THREE YEARS FROM DATE OF PURCHASE, INSTALLED TO N.E.C., IN NORMAL USE. Manufacturer at his option will replace or repair such fixture or refund the purchase price or reimbursement of cost of purchase and delivery of new fixture at the office of manufacturer within three years of original shipment. Liability of manufacturer is limited to the foregoing, and manufacturer shall not be liable for any other damages, direct or indirect, sustained or suffered by purchaser or any person. This warranty is supplied from the manufacturer and will render the warranty void.