

## Shallow Plenum Open Downlight

### Features

#### Lamp

- Designed for:
  - 1 horizontal Triple Tube Amalgam 42 watt.
- 4 pin GX24q-4 base.
- 90% lumen output maintained at ballast minimum operating temperature.
- Flicker-free starting, high light output, excellent color rendering (82 CRI).
- Long 10,000 hour life.
- High efficiency with low operating costs.
- See Option -43 for lower wattage.

#### Ballast

- Regulating electronic high power factor, thermally protected, enclosed.
- Cold weather: -18°C to -20°C (0°F to -5°F).
- Built-in RIF filter, THD is less than 10%.
- 120 volt standard or see optional voltages.
- See Option -39 for dimming availability and restrictions.
- Visible and easily serviced in all ceilings.

#### Fuse

- Available as Option -FS.

#### Reflector

- Self-flanged low iridescence specular Alzak® aluminum.
- Optional SofTex softly etched Clear, Dune, Champagne Gold or Wheat also available
- Optional OptiGroove assembly available.

#### Housing

- Acrylic enameled aluminum.
- Cool: Dissipates heat across entire surface area. Ventilated.
- Rustproof: Exceeds 1000 hour ASTM 5% salt spray test.
- Entire luminaire serviced through removable reflector.
- Prewired outlet box; 14GA (NEC) galvanized steel. UL listed. Accessible through fixture opening.
- Built-in plaster frame.

#### Installation

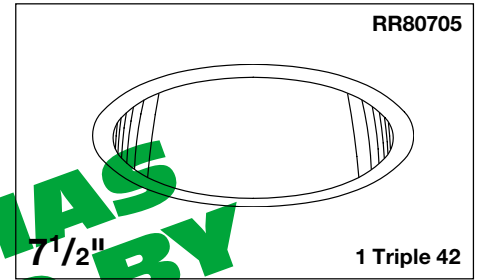
- 27" hanger bars supplied (2).
- Fully adjustable universal mounting brackets supplied (2).
- Reflector and socket bracket adjust as unit for ease of installation.
- Recesses indoor or outdoor in covered locations.

#### UL, C-UL (Canada) Listings

- Wet, damp or dry locations, covered ceilings.
- Through-branch circuit conductors (6 #12).

#### Three Year Limited Warranty

- Complete standard fixture.



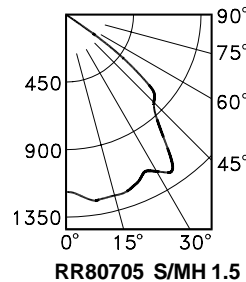
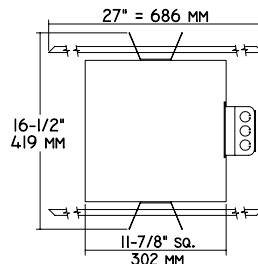
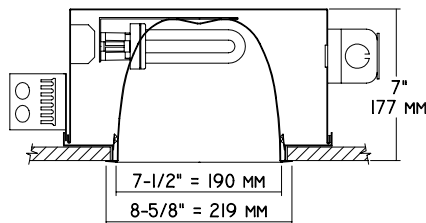
**75% Efficiency  
Cold Weather Electronic Ballast  
Standard**

**SofTex  
Clear, Dune, Champagne Gold  
or Wheat  
Reflector Finishes  
Available**

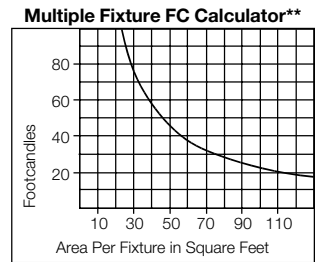
THIS FIXTURE HAS BEEN REPLACED BY SOME NEWER DESIGNS MAY HAVE CHANGED

### Performance at a Glance

RR80705



RR80705 S/MH 1.5



RR80705

#### Cone of Light\*

Ft.	FC	Dia.
6	32.4	8.0
8	18.3	10.6
10	11.7	13.3
12	8.1	15.0
14	6.0	18.6
16	4.6	21.2

RR80705

#### Cone of Light Key

- Ft.** Distance from fixture
- FC** Footcandles (average)
- Dia.** Circle of light at 50% of FC

\* Dia. (in ft.) shown is where FC value is half the FC at nadir.  
 \*\* Based on RCR2; ceiling 70%; wall 50%; floor 20%. Use S/MH shown for each fixture. Distribution curve and S/MH shown are 90° to lamp axis.

## THE KIRLIN COMPANY

3401 EAST JEFFERSON AVENUE • DETROIT, MICHIGAN 48207-4232  
 (313) 259-6400 • Fax: (313) 259-9409 OR (313) 259-3121 • www.light-link.com/kirlin

**SECOND CENTURY SERIES  
TRIPLE TUBE  
COMPACT FLUORESCENT LIGHTING**

MAXIMUM WATTAGE

CATALOG NUMBER

**1 Triple 42**

**RR80705**

DUE TO OUR CONTINUING EFFORT TO IMPROVE PRODUCTS, TECHNICAL INFORMATION IS SUBJECT TO CHANGE WITHOUT NOTICE.

Alzak® is a registered trademark of ALCOA.

**RR80705 RECESSED ROUND: TRIPLE TUBE AMALGAM 42 WATT COMPACT FLUORESCENT**

**Detailed Photometry - Installed Fixture**

FROM I.T.L. (BOULDER, CO) TEST NUMBER 45077

**RR80705**

**\*LER = 50.9**

**•AEC = \$4.72**



**CANDLEPOWER DISTRIBUTION**

	0.0	45.0	90.0	135.0	180.0
0	1168	1168	1168	1168	1168
5	1140	1156	1191	1218	1210
15	993	1158	1232	1210	1213
25	968	1023	1170	1103	1201
35	932	1012	1212	1138	1154
45	623	764	824	749	768
5	219	229	163	117	135
6	5	4	4	4	4
75	4	4	3	2	2
8	0	0	0	0	0
9	0	0	0	0	0

**COEFFICIENTS OF UTILIZATION**

RF	RC	50	30	15	10	5
1	85	82	80	78	77	76
2	79	75	71	68	71	68
3	74	68	63	59	64	61
4	69	61	56	52	59	55
5	64	56	50	46	54	49
6	59	51	45	41	49	44
7	55	47	41	37	45	40
8	52	43	37	34	42	37
9	49	40	34	30	38	34
10	46	37	31	28	36	31

**Estimated Multipliers**

- 70 SofTex Clear: CP x .93
- 71 SofTex Dune: CP x .87
- 90 SofTex Champagne Gold: CP x .90
- 91 SofTex Wheat: CP x .87
- 90 OptiGroove: CP x .75

**\* LER = Luminaire Efficiency Rating**

$LER = \frac{\text{Luminaire Effic.} \times \text{Total Lamp Lumens} \times \text{Ballast Factor}}{\text{Input Watts}}$

**• AEC = Annual Energy Cost per 1000 lumens (based on 3000 hours use @ \$0.08 KWH).**

**Options**

- 31 White reflector trim, self-flanged.
- 32 Trim extender. Broadens trim flange O.D. by 1" to cover larger ceiling opening.
- 39 Installed electronic dimming ballast. Consult factory for 18 or 26 watt. Consult factory for quantity and type required. Also see Options -LE and -WD. Indoor use.
- 43 Lower wattage triple tube: Specify 18, 26 or 32 watt.
- 45 Gasket above reflector flange. Stops dust streaks on ceiling.
- 58 277 volt 60 Hz. ballast instead.
- 70 SofTex Clear softly etched self-flanged reflector. Resists smudges. (CP x .93)
- 71 SofTex Dune softly etched self-flanged reflector. Resists smudges. (CP x .87)
- 73 Internal emergency "Ni-Cad" battery pack concealed in housing. Switch and visible light unobtrusively located inside reflector. For indoor use.
- 79 Extension collar for up to 2" thick ceilings.
- 82 Sloped ceiling adapter. Specify slope in 5° increments up to 30°.
- 90 SofTex Champagne Gold softly etched self-flanged reflector. Resists smudges. (CP x .90)
- 91 SofTex Wheat softly etched self-flanged reflector. Resists smudges. (CP x .87)
- 94 Specular Pewter or Umber or other specified custom color self-flanged reflector. Consult factory.
- 97 Other voltage ballast. Consult factory.
- 98 347 volt 60 Hz. ballast instead. Consult factory for dimming.
- 99 Special modification. Consult factory.
- FS Fused. Replaceable. Aids servicing.
- LE With 4-pin electronic Triple Tube amalgam lamp. 82 CRI and 10,000 hour life. 3500°K or consult factory for 2700°K, 3000°K or 4100°K. Specify wattage and color temperature.
- OG OptiGroove black seamless tapered aluminum assembly. White trim, self-flanged. (CP x .75)
- WD Wall Dimmer for use with Option -39. Consult factory for use with 18 or 26 watt.

**SUBMITTAL DATA**

**APPROVAL STAMP**

JOB NAME \_\_\_\_\_

TYPE \_\_\_\_\_

WATTAGE \_\_\_\_\_ VOLTAGE \_\_\_\_\_

CATALOG NUMBER \_\_\_\_\_

LIMITED WARRANTY: CATALOGUED KIRLIN FIXTURES ARE WARRANTED FREE OF DEFECTS IN WORKMANSHIP OR MATERIAL FOR THREE YEARS FROM DATE OF PURCHASE. INSTALLATION MUST BE BY A QUALIFIED ELECTRICIAN. THE PURCHASER'S REPRESENTATION OF THE QUALITY OF THE FIXTURE AT THE OFFICE OF MANUFACTURE WITHIN THE YEAR OF ORIGINAL SHIPMENT, AND THE MANUFACTURER SHALL NOT BE LIABLE FOR ANY OTHER DAMAGES, DIRECT OR INDIRECT, SUSTAINED OR SUFFERED BY THE PURCHASER OR ANY PERSON. THIS WARRANTY IS SUPPLIED FROM THE MANUFACTURER AND DOES NOT APPLY TO THE FIXTURES. SALES DOES NOT WARRANT AS TO MERCHANTABILITY OR FITNESS FOR PARTICULAR USE, NOR WILL ANY ORAL STATEMENT CONSTITUTE A WARRANTY OR A MODIFICATION OF THIS WARRANTY.