

6" Lensed Wall Wash for 32W Triple Tube

Features

Lamp

- Designed for horizontal triple tube: 1 offset triple tube 32 watt (by others).
- 4 pin GX24q-3 base.
- 90% lumen output maintained at ballast minimum operating temperature.
- Flicker-free starting, high light output.
- Long 10,000 hour life.
- High efficiency with low operating costs.
- See Option -43 for lower wattage.

Ballast

- Regulating electronic high power factor, thermally protected, encased.
- Minimum starting temperature -5° to -10°C (14°-23°F). See Options for cold weather.
- With built-in end of lamp life protection.
- Built-in RIF filter. THD is less than 10%.
- 120 volt standard or see optional voltages.
- Dimming optional. See Option -39.
- Single circuit wiring.
- Visible and easily serviced through aperture.

Fuse

- Available as Option -FS.

Trim Assembly

- Specular Alzak® aluminum upper reflector.
- Clear Softex aluminum self-flanged lower reflector.

- C#73 tempered prismatic glass lens.
- Optional lower reflector colors and finishes available, see Options.

Housing

- Cool. Acrylic enameled 100% aluminum.
- Rustproof. Exceeds 1000 hour ASTM 5% salt spray test.
- Dissipates heat across entire surface area.
- Entire luminaire serviced through aperture.
- Built-in plaster frame.

Outlet Box

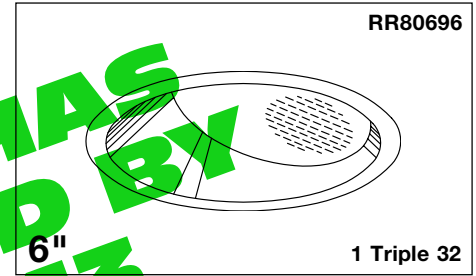
- Prewired 14 GA (NEC) galvanized steel. UL listed; with removable insulated cover.
- 1/2" and 3/4" knockouts.

Installation

- 27" hanger bars supplied (2).
 - Fully adjustable universal mounting brackets supplied (2).
- UL, C-UL (Canada) Listings**
- Wet, damp or dry locations, covered ceilings.
 - Through-branch circuit conductors (up to 6#12). Supply wire rating: 90°C.

Three Year Limited Warranty

- Complete standard fixture.

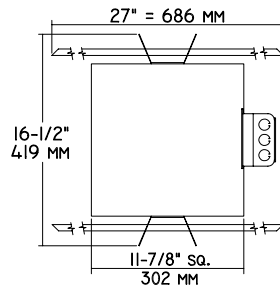
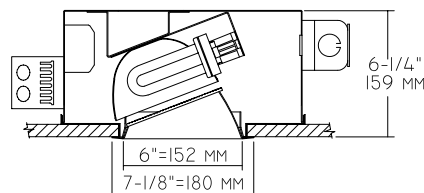


Lensed Wall Wash Illumination

THIS FIXTURE HAS BEEN REPLACED BY SOMEONE'S DESIGN OR OPTIONS MAY HAVE CHANGED

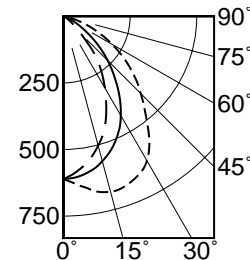
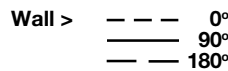
Performance at a Glance

RR80696



DISTANCE FROM CEILING IN FEET	SINGLE FIXTURE				MULTIPLE FIXTURES						
	1'	2'	3'	4'	3' CENTERS	4' CENTERS	3' CENTERS	4' CENTERS			
FIXTURE INSTALLED 3" FROM WALL											
Footcandle Distribution on Wall Surface											
1	7.5	5.7	3.4	1.7	0.8	11.2	11.0	11.2	9.7	9.1	9.7
2	12.5	10.1	6.0	3.0	1.7	21.3	21.2	21.3	14.9	14.3	14.9
3	14.3	12.4	8.9	5.1	2.6	25.5	25.6	25.5	19.5	19.2	19.8
4	12.5	11.3	8.7	5.8	3.3	25.1	25.5	25.1	18.7	18.4	18.7
5	9.4	8.6	7.0	5.1	3.4	22.3	22.5	22.3	17.2	17.1	17.2
6	6.9	6.5	5.6	4.3	3.1	18.3	18.7	18.3	14.5	14.6	14.5
7	5.1	4.9	4.4	3.6	2.7	15.2	15.6	15.2	12.3	12.3	12.3
8	3.8	3.8	3.5	3.0	2.3	12.9	13.1	12.9	10.4	10.3	10.4
9	3.0	2.9	2.8	2.4	2.0	11.2	11.2	11.2	9.2	9.1	9.2

RR80696



THE KIRLIN COMPANY

3401 EAST JEFFERSON AVENUE • DETROIT, MICHIGAN 48207-4232
 (313) 259-6400 • Fax: (313) 259-9409 OR (313) 259-3121 • www.kirlinlighting.com

SECOND CENTURY SERIES
 TRIPLE TUBE
 COMPACT FLUORESCENT LIGHTING

MAXIMUM WATTAGE

CATALOG NUMBER

1 Triple 32

RR80696

THE KIRLIN COMPANY RESERVES THE RIGHT TO CHANGE, WITHOUT NOTICE, DETAILS OR SPECIFICATIONS IN PRODUCT DESIGN.

Alzak® is a registered trademark of ALCOA.

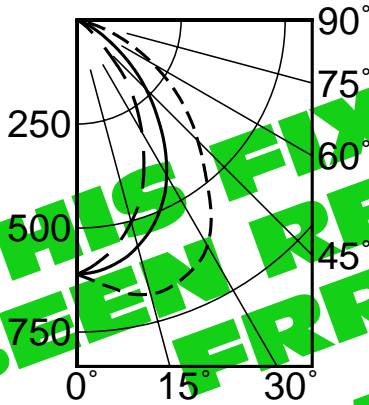
Detailed Photometry - Installed Fixture

FROM I.T.L. (BOULDER, CO) TEST NUMBER 53108

RR80696

CANDLEPOWER DISTRIBUTION

	0.0	45.0	90.0	135.0	180.0
0	611	611	611	611	611
5	636	624	605	590	584
15	682	636	563	516	503
30	660	602	485	406	380
45	561	504	366	269	244
60	410	363	234	138	92
75	279	214	112	42	25
90	147	90	34	7	1
105	41	23	4	1	0
120	0	0	0	0	0
135	0	0	0	0	0
150	0	0	0	0	0



COEFFICIENT OF UTILIZATION

Room Cavity Ratio (RCR)	0	30	60	90	120	150	180
0	50	48	47	45	45	44	43
1	46	43	41	39	41	39	38
2	43	39	36	34	37	35	33
3	40	35	32	30	34	31	29
4	37	32	29	26	31	28	26
5	35	30	26	24	28	26	23
6	32	27	24	21	26	23	21
7	30	25	22	19	24	21	19
8	28	23	20	18	22	20	18
9	27	22	18	16	21	18	16

THIS FIXTURE HAS BEEN REPLACED BY FRR-06027-43 SOME DESIGN FEATURES OR OPTIONS MAY HAVE CHANGED

* **LER = Luminaire Efficiency Rating**
 LER = Luminaire Efficacy x Total Lamp Lumens x Ballast Factor / Input Watts
 * **AEC = Annual Energy Cost per 1000 lumens (based on 3000 hours use @ \$0.08 KWH).**

Options

Ballasts

- 39 Installed electronic dimming ballast for 32 watt or add -43 for lower wattages. Specify wattage and voltage. Consult factory for brand type. Also see Options -LE and -WD. Indoor use; not available with Option -CW.
- CW Cold weather electronic HPS -22°F (-30°C) ballast instead. Not available with -39.

Wattage and Voltage

- 43 Lower wattage: Specify 1-26 or 1-18 watt. Specify voltage.
- 58 277 volt 60Hz. ballast instead.

- 97 Other voltage ballast. Consult factory.
- 98 347 volt 60 Hz. ballast instead. Consult factory.

Battery Packs, Electrical, Lamps

- 73 Internal emergency "Ni-Cad" battery pack. Specify voltage. Switch and visible light located above lens. For indoor use.
- FS Fused. Replaceable. Aids servicing.
- LE With 4-pin electronic triple tube amalgam lamp. 82 CRI and 10,000 hour life. 3500°K or consult factory. Specify wattage and color temperature.
- WD Wall Dimmer for use with Option -39. Consult factory for type and quantity required.

Reflectors and Trims (Self-Flanged)

- 30 White self-flanged lower reflector.
- 31 White flange (only) on lower reflector.
- 32 Trim extender. Broadens trim flange O.D. by 1" to cover larger ceiling opening.
- 45 Gasket between trim and ceiling.
- 71 SofTex Dune etched lower reflector.
- 77 SofTex Pewter softly etched lower reflector.
- 90 SofTex Champagne Gold softly etched lower reflector.
- 91 SofTex Wheat softly etched lower reflector.
- 94 Custom color trim assembly. Consult factory.

Other

- 99 Special modification. Consult factory.

SUBMITTAL DATA

APPROVAL STAMP

JOB NAME _____

TYPE _____

WATTAGE _____ VOLTAGE _____

CATALOG NUMBER _____

LIMITED WARRANTY: CATALOGUED KIRLIN FIXTURES ARE WARRANTED FREE OF DEFECTS IN WORKMANSHIP OR MATERIAL FOR THREE YEARS FROM DATE OF PURCHASE. INSTALLATION TO N.E.C. IN NORMAL USE. Manufacturer at his option will replace or repair such fixture or return the purchase price on presentation of proof of purchase and defective fixture at the office of manufacturer within three years of original shipment. Liability of manufacturer is limited to the foregoing, and manufacturer shall not be liable for any other damages, direct or indirect, sustained or suffered by purchaser or any person. This warranty is supplied to the buyer in place of all other warranties, expressed or implied. Seller does not warrant as to merchantability or fitness for a particular use, nor will any oral statement constitute a warranty or amend this specific warranty. Abuses of the fixture, improper installation, repair, or modification of the fixture without prior written authorization from the manufacturer will render the warranty void.