

## Open Appearance with ShatterGuard™ Protection

### Features

#### Lamp

- Designed for:
  - 1 horizontal Triple Tube 42 watt.
- **Lamp socket suitable for 42, 32 or 26 (electronic) wattages.**
- 4-pin GX24q-4 base (42W) or GX24q-3 base (32W, 26W).
- See Option -43 for 18 watt or for use with Option -39 Dimming. Specify voltage.
- 90% lumen output maintained at ballast minimum operating temperature.
- Flicker-free starting, high light output, excellent color rendering (82 CRI).
- Long 10,000 hour life.
- High efficiency with low operating costs.

#### Ballast

- **Suitable for all wattages from 26 through 42 electronic (non-dimming).**
- **Suitable for all voltages from 120 through 277 volt (non-dimming).**
- Regulating electronic high power factor, thermally protected, encased.
- Minimum starting temperature 0°F (-18°C). See Option -CW for cold weather.
- Standard with built-in end of lamp life (EOL) protection circuit.
- Built-in RIF filter.
- 120 volt standard or see optional voltages for use with specific Options.

- Dimming optional. See Option -39.
- Visible and easily serviced in all ceilings.

#### Fuse

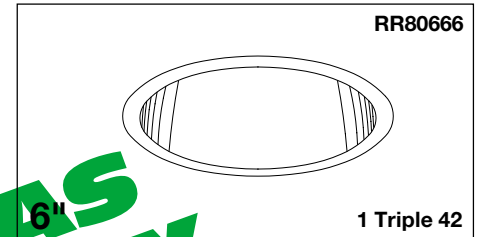
- Available as Option -FS.

#### Reflector

- Clear specular Alzak® aluminum upper reflector.
- **ShatterGuard 1/8" clear polycarbonate lens below lamp, secured to upper reflector.**
- Self-flanged low iridescence specular Alzak aluminum lower reflector.
- Optional SofTex softly etched Clear, Dune, Champagne Gold or Wheat; or all white, Black specular Alzak, or OptiGroove lower reflectors available.

#### Housing

- Acrylic enameled aluminum.
- Cool: Dissipates heat across entire surface area. Ventilated.
- Rustproof: Exceeds 1000 hour ASTM 5% salt spray test.
- Entire luminaire serviced through removable reflector.
- Prewired outlet box: 14GA (NEC) galvanized steel, UL listed. Accessible through fixture opening.
- Built-in plaster frame.



**Food Processing, Cafeterias, Nursing Homes, Hospitals**

**NEW Multi-Wattage and Multi-Voltage Ballast Standard**

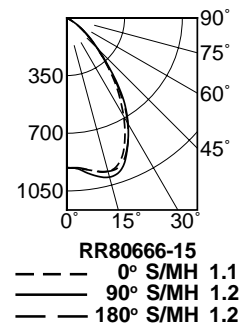
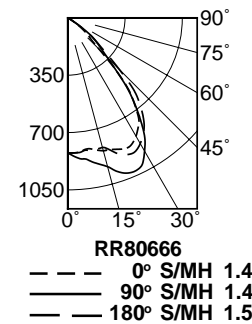
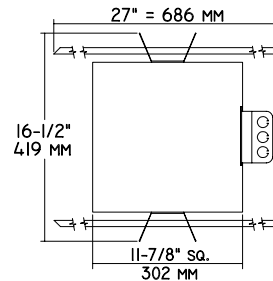
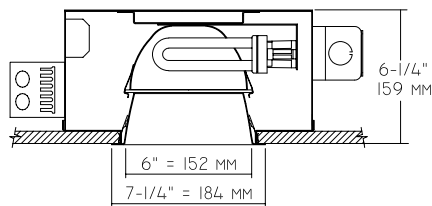
**Shallow Plenum**

#### Installation

- 27" hanger bars supplied (2).
- Fully adjustable universal mounting brackets supplied (2).
- Recesses indoor or outdoor in covered locations.
- **UL, C-UL (Canada) Listings**
- Wet, damp or dry locations, covered ceilings.
- Through-branch circuit conductors (6 #12).
- **Three Year Limited Warranty**
- Complete standard fixture.

### Performance at a Glance

RR80666



#### Cone of Light\*

Ft.	FC	Dia.
6	22.9	8.6
8	12.9	11.5
10	8.2	14.4
12	5.7	17.3
14	4.2	20.2
16	3.2	23.1

#### Cone of Light\*

Ft.	FC	Dia.
6	25.3	7.1
8	14.2	9.5
10	9.1	11.8
12	6.3	14.2
14	4.6	16.5
16	3.6	18.9

**Cone of Light Key**  
 Ft. Distance from fixture  
 FC Footcandles (average)  
 Dia. Circle of light at 50% of FC

\* Dia. (in ft.) shown is where FC value is half the FC at nadir.

## THE KIRLIN COMPANY

3401 EAST JEFFERSON AVENUE • DETROIT, MICHIGAN 48207-4232  
 (313) 259-6400 • Fax: (313) 259-9409 OR (313) 259-3121 • www.light-link.com/kirlin

SECOND CENTURY SERIES  
 TRIPLE TUBE  
 COMPACT FLUORESCENT LIGHTING

MAXIMUM WATTAGE

CATALOG NUMBERS

1 Triple 42

RR80666

THE KIRLIN COMPANY RESERVES THE RIGHT TO CHANGE, WITHOUT NOTICE, DETAILS OR SPECIFICATIONS IN PRODUCT DESIGN.

Alzak® is a registered trademark of ALCOA.

## RR80666 RECESSED ROUND: TRIPLE TUBE 42 WATT (MAXIMUM) COMPACT FLUORESCENT

### Detailed Photometry - Installed Fixture

FROM I.T.L. (BOULDER, CO) RR80666: TEST NUMBER 49999  
RR80666-15: TEST NUMBER 50000

RR80666

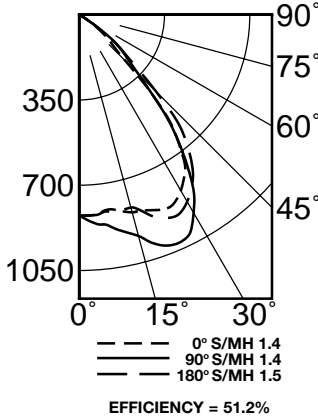
\*LER = 33.8  
•AEC = \$7.09

#### CANDLEPOWER DISTRIBUTION

	0.0	45.0	90.0	135.0	180.0
0	824	824	824	824	824
5	823	839	863	828	825
15	840	907	940	852	819
25	873	967	1019	921	916
35	758	811	786	808	814
45	271	332	342	350	446
55	78	110	112	86	104
65	2	3	2	2	2
75	0	0	0	0	0
85	0	0	0	0	0
90	0	0	0	0	0

#### COEFFICIENTS OF UTILIZATION

RF	20						
	80			50			
RC	70	50	30	10	50	30	10
RW	70	50	30	10	50	30	10
1	58	56	55	53	53	52	51
2	54	51	49	47	49	47	45
3	51	47	44	41	45	42	40
4	47	43	39	37	41	38	36
5	44	39	36	33	38	35	33
6	41	36	32	30	35	32	29
7	39	33	30	27	32	29	27
8	36	31	27	25	30	27	24
9	34	28	25	22	28	24	22
10	32	26	23	21	26	23	20



\* LER = Luminaire Efficacy Rating  
LER = Luminaire Effic. x Total Lamp Lumens x Ballast Factor  
Input Watts

• AEC = Annual Energy Cost per  
1000 lumens (based on 3000  
hours use @ \$0.08 KWH).

RR80666-15

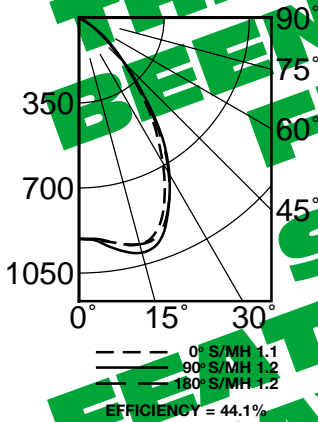
\*LER = 29.1  
•AEC = \$8.24

#### CANDLEPOWER DISTRIBUTION

	0.0	45.0	90.0	135.0	180.0
0	909	909	909	909	909
5	919	919	924	921	914
15	964	982	1000	976	964
25	830	863	869	859	866
35	539	585	593	558	574
45	260	278	268	250	254
55	85	95	96	87	89
65	4	6	6	5	4
75	0	0	0	0	0
85	0	0	0	0	0
90	0	0	0	0	0

#### COEFFICIENTS OF UTILIZATION

RF	20						
	80			50			
RC	70	50	30	10	50	30	10
RW	70	50	30	10	50	30	10
1	50	48	47	46	46	45	44
2	47	44	42	41	42	41	39
3	44	41	38	36	39	37	35
4	41	37	35	32	36	34	32
5	39	34	31	29	33	31	29
6	36	32	29	27	31	28	26
7	34	29	26	24	29	26	24
8	32	27	24	22	27	24	22
9	30	26	23	21	25	22	20
10	29	24	21	19	23	21	19



Estimated Multipliers  
-16 Champagne Gold Alzak: CP x .95  
-30 White: CP x .95  
-70 Softex Clear: CP x .92

-71 Softex Dune: CP x .89  
-72 Black Alzak: CP x .77  
-90 Softex Champagne Gold: CP x .90  
-91 Softex Wheat: CP x .88  
-OG OptiGroove: CP x .83

### Options

- 15 Prismatic flat C#73 spread lens instead.
- 16 Champagne Gold specular Alzak® self-flanged lower reflector. (CP x .95)
- 30 White lower reflector, self-flanged. (CP x .95)
- 31 White flange (only) on lower reflector.
- 32 Trim extender. Broadens trim flange O.D. by 1" to cover larger ceiling opening.
- 39 Installed electronic dimming ballast for 42 watt or add -43 for lower wattages. Specify voltage. Consult factory for brand type. Also see Options -LE and -WD. Indoor use; not available with -CW.
- 43 Lower wattage triple tube: Specify 18 watt (electronic) or 32, 26 or 18 watt (dimming) and voltage.
- 45 Gasket above reflector flange. Stops dust streaks on ceiling.
- 58 277 volt 60 Hz. ballast instead. For use with Options -39, -43 or -73.
- 70 Softex Clear self-flanged lower reflector. (CP x .92)
- 71 Softex Dune self-flanged lower reflector. (CP x .89)
- 72 Black specular Alzak self-flanged lower reflector. (CP x .77)
- 73 Internal emergency "Ni-Cad" battery pack concealed in housing. Specify voltage. Switch and light unobtrusively located inside upper reflector. Indoor use.
- 79 Extension collar for up to 2" thick ceilings.
- 82 Sloped ceiling adapter. Specify slope in 5° increments up to 30°.
- 90 Softex Champagne Gold self-flanged lower reflector. (CP x .90)
- 91 Softex Wheat self-flanged lower reflector. (CP x .88)
- 94 Specified custom color specular or Softex self-flanged reflector. Consult factory.
- 97 Other voltage ballast. Consult factory.
- 98 347 volt 60 Hz. ballast instead. Consult factory.
- 99 Special modification. Consult factory.
- CW Cold weather -22°F (-30°C) ballast instead. Not available with Option -39.
- FS Fused. Replaceable. Aids servicing.
- LE With 4-pin electronic Triple Tube amalgam lamp. 82 CRI and 10,000 hour life. Consult factory for compatibility with GE 42 watt lamps. 3500°K or consult factory for 2700°K, 3000°K or 4100°K. Specify wattage and color temperature.
- OG OptiGroove black seamless tapered aluminum lower cone. White trim, self-flanged. (CP x .83)
- WD Wall Dimmer for use with Option -39. Consult factory for type and quantity required.

### SUBMITTAL DATA

### APPROVAL STAMP

JOB NAME \_\_\_\_\_

TYPE \_\_\_\_\_

WATTAGE \_\_\_\_\_ VOLTAGE \_\_\_\_\_

CATALOG NUMBER \_\_\_\_\_

LIMITED WARRANTY: CATALOGUED KIRLIN FIXTURES ARE WARRANTED FREE OF DEFECTS IN WORKMANSHIP OR MATERIAL FOR THREE YEARS FROM DATE OF PURCHASE. INSTALLATION, IN NORMAL USE. Manufacturer at this option will replace or repair such fixture or refund the purchase price on presentation of proof of purchase and defective fixture at the office of manufacturer within three years of original shipment. Liability of manufacturer is limited to the foregoing, and manufacturer shall not be liable for any other damages, direct or indirect, sustained or suffered by purchaser or any person. This warranty is supplied on the understanding that other warranties, expressed or implied, shall not be construed to conflict with this warranty. Seller does not warrant as to merchantability or fitness for a particular use, nor liability or statement constitute a warranty or amend this specific warranty. Improper installation, improper use, or modification of the fixture without prior written authorization from the manufacturer will void the warranty.