

MEDICAL EXAM LIGHT: Newborn / Patient Exam Adjustable

Features

Lamp Assembly

- Designed for:
Q250 watt (maximum) tungsten halogen
PAR 38 lamp (by others).
- 3000°K color temperature and 100 CRI for
accurate tissue rendering and patient
evaluation. Rated 4200 hour life.
- Glazed porcelain medium base socket.
- Yoke assembly tilts 30° and rotates 358°.
- Dimmable (controls by others).

Trim Assembly

- Self-flanged seamless tapered smooth
aluminum flare trim with white finish.
- Smooth surface prevents contaminant or
dust build-up. Easily cleaned.
- Clear tempered glass regressed lens.

Housing

- Cool, acrylic enameled aluminum.
- Dissipates heat across entire surface
area. Ventilated for convection cooling.

- Rustproof: Exceeds 1000 hour ASTM 5%
salt spray test.
- Entire luminaire serviced through
removable trim assembly.
- Built-in plaster frame.

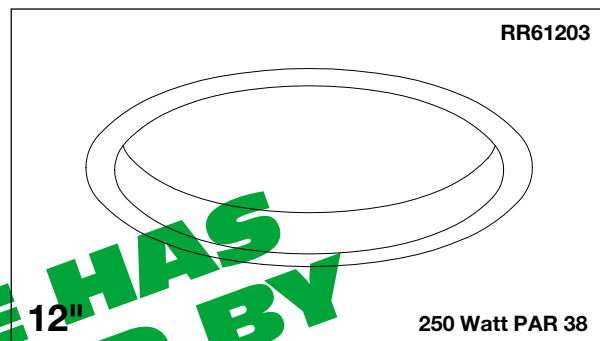
Outlet Box

- Prewired 14GA (NEC) galvanized steel,
UL listed; with removable insulated
cover.
- 1/2" and 3/4" knockouts.

Installation

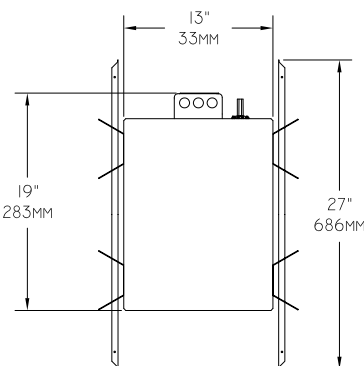
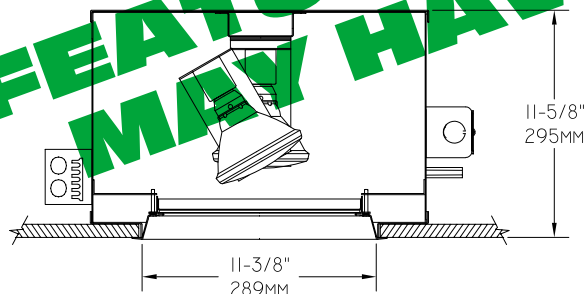
- 27" galvanized hanger bars supplied (2)

- Fully adjustable universal mounting
brackets supplied (4).
- Recesses in any ceiling type.
- UL, C-UL (Canada) Listings**
- Wet, damp or dry locations, covered
ceilings.
- Through-branch circuit conductors
(6#12). Supply wire rating: 90°C.
- Three Year Limited Warranty**
- Complete, standard fixture.
- Thermal Protection**
- Per current NEC.



Adjustable 30° Tilt with 358° Rotation

Dimensions - Installed Fixture



Options

- | | | |
|--|--|--|
| <ul style="list-style-type: none"> -10 Tinted tempered glass lens instead; raises color temperature; reduces CRI and lumen output. -15 Prismatic C#73 flat glass lens instead. Broadens illumination distribution. -26 Tamperproof trim assembly with key. -27 Clear 1/4" tempered glass with C#73 above for added vandal resistance. Use with Option -26. -32 Trim extender. Broadens trim flange by 1" to cover larger ceiling opening. | <ul style="list-style-type: none"> -44 Black OptiGroove regressed trim assembly instead. White flange. Also see Option -94. -45 Gasket between trim flange and ceiling. (Minimizes dust streaks on ceiling.) -46 Gasket between lens and trim. Minimizes contaminant and dust entry. -58 277/120 volt stepdown transformer for 277 volt line input, prewired into each fixture; with 277 volt thermal protector. -82 Sloped ceiling adapter, with mounting hardware. Specify 5° increments up to 30°. | <ul style="list-style-type: none"> -94 Custom color self-flanged smooth flare trim. Consult factory. -97 For other input supply voltages, consult factory. -99 Special modification. Consult factory. -LP With lamp. 250 watt PAR 38 tungsten halogen. 4200 hour life rating. -TA Top access. For servicing from above ceiling. -TC Teflon coated safety lens; retains glass particles in event of breakage. |
|--|--|--|

THE KIRLIN COMPANY

3401 EAST JEFFERSON AVENUE • DETROIT, MICHIGAN 48207-4232
(313) 259-6400 • Fax: (313) 259-9409 OR (313) 259-3121 • www.kirlinlighting.com

MAXIMUM WATTAGE

CATALOG NUMBER

**TUNGSTEN HALOGEN
HEALTHCARE FACILITY LIGHTING**

250 PAR 38

RR61203

DUE TO OUR CONTINUING EFFORT TO IMPROVE PRODUCTS,
TECHNICAL INFORMATION IS SUBJECT TO CHANGE WITHOUT NOTICE.

RR61203

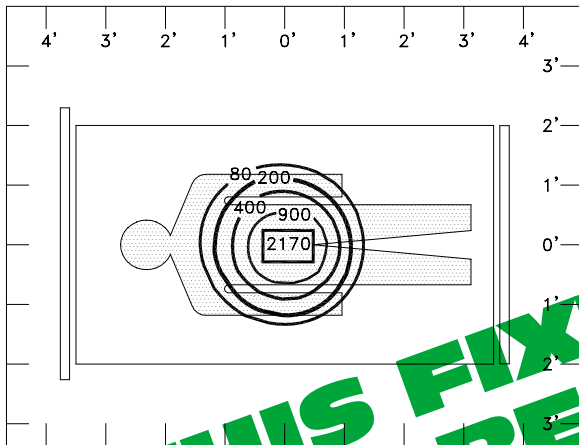
RECESSED ROUND: 250 WATT PAR 38 TUNGSTEN HALOGEN

KIRLIN

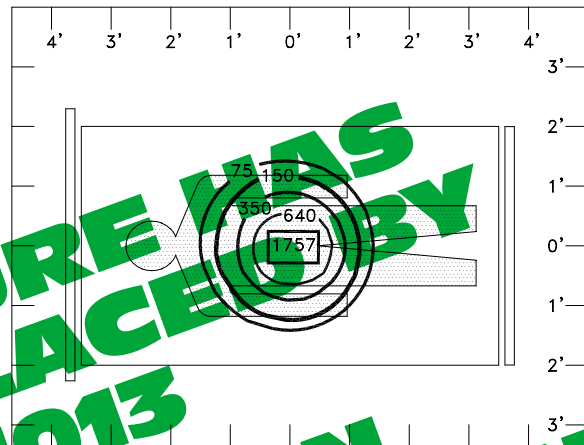
Footcandle Distribution Data

FROM I.T.L. (BOULDER, CO) TEST NUMBER 00000

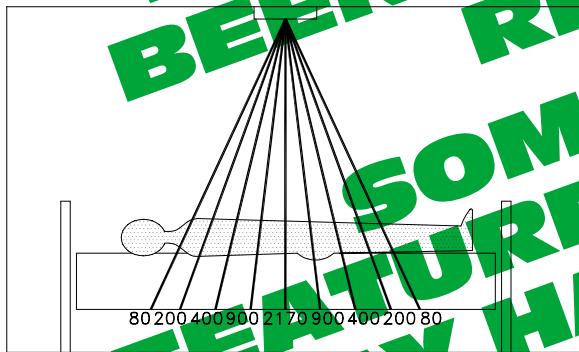
PLAN VIEW CEILING HEIGHT 8' • WORK PLANE 3'6"



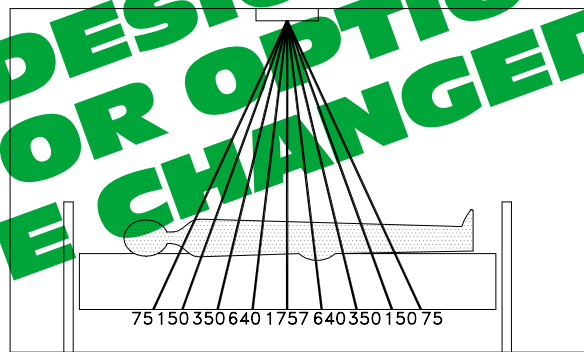
PLAN VIEW CEILING HEIGHT 8'6" • WORK PLANE 3'6"



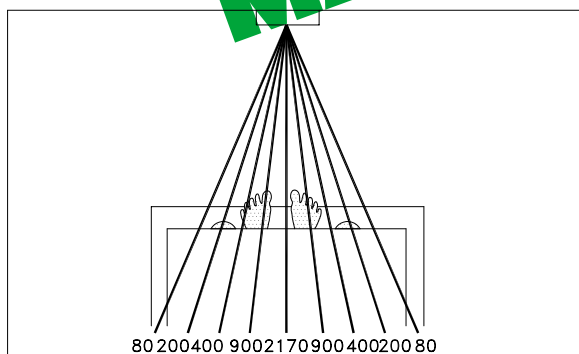
SIDE VIEW



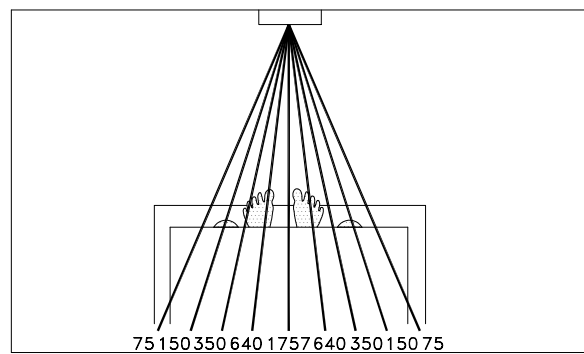
SIDE VIEW



FRONT VIEW



FRONT VIEW



- Notes:
1. All lighting levels are expressed in footcandles, with distances expressed in feet, as measured at the work plane (3'6").
 2. The work plane (3'6") is defined as: examination bed height, plus patient body depth.
 3. Fixture is centered over examination bed with its longest axis parallel to the length of the bed.

SUBMITTAL DATA

APPROVAL STAMP

JOB NAME _____

TYPE _____

WATTAGE _____ VOLTAGE _____

CATALOG NUMBER _____

LIMITED WARRANTY: CATALOGED KIRLIN FIXTURES ARE WARRANTED FREE OF DEFECTS IN WORKMANSHIP OR MATERIAL FOR THREE YEARS FROM DATE OF PURCHASE. INSTALLATION, E.C., IN NORMAL USE. Manufacturer at this option will replace or repair such fixture or refund the purchase price on presentation of proof of purchase and defective fixture at the offices of manufacturer within the three years of original shipment. Liability of manufacturer is limited to the foregoing, and manufacturer shall not be liable for any other damages, direct or indirect, sustained or incurred by purchase or any person. This warranty is supplied for the buyer in place of all other warranties, expressed or implied. Seller does not warrant as to merchantability or fitness for a particular use, nor will any oral statement constitute a warranty or amend this specific warranty. Abnormal use, abuse of the fixture, improper installation, or repair or modification of the fixture without prior written authorization from the manufacturer will void the warranty void.

HEALTHCARE
SEPTEMBER 2000