

MEDICAL WARMING LIGHT: Newborn, Burn, Trauma; with Stainless Steel Mesh Protection

Features

Lamp Assembly

- Designed for: 250 watt (maximum) 5000 hour life tungsten halogen infrared heat lamp (by others).
- Glazed porcelain medium base socket.

Reflector

- Specular Alzak® aluminum.

Trim Assembly

- Self-flanged hydroformed tapered OptiGroove baffle standard. Matte black finish with white trim flange.
- Torsion springs retain snug fit to ceiling.
- Seamless aluminum construction.
- Type 304 stainless steel protective mesh screen with hold down clips.

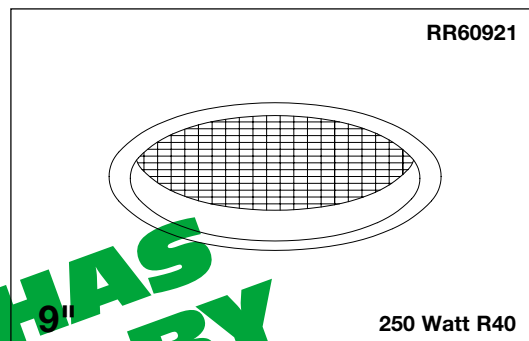
Housing

- Acrylic enameled aluminum.
- Cool: Dissipates heat across entire surface area.
- Rustproof: Exceeds 1000 hour ASTM 5% salt spray test.

- Entire luminaire serviced through removable trim assembly.
- Built-in plaster frame.
- Outlet Box
 - Prewired 14GA (NEC) galvanized steel, UL listed; with removable insulated cover.
 - 1/2" and 3/4" knockouts.

Installation

- 27" galvanized hanger bars supplied (2).
- Fully adjustable universal mounting brackets supplied (4).
- Recesses indoor or outdoor in covered locations.



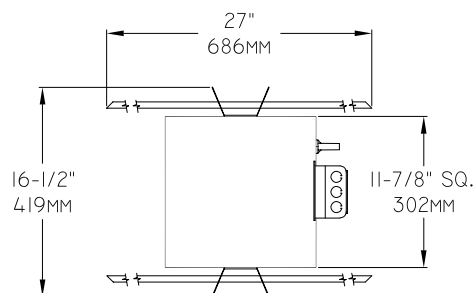
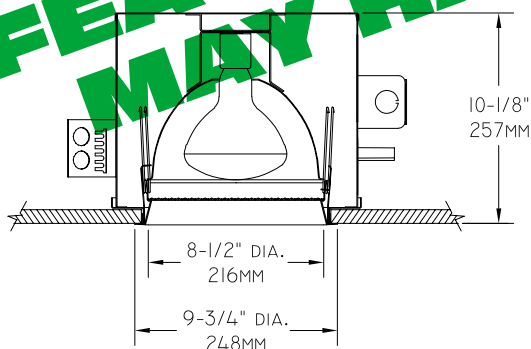
Stainless Steel Screen Transmits Warmth While Protecting Environment Below

See RR60920 for Fresnel Lens Version

UL, C-UL (Canada) Listings

- Wet, damp or dry locations, covered ceilings.
- Through-branch circuit conductors (6#12). Supply wire rating - 90°C.
- Three Year Limited Warranty**
- Complete standard fixture.
- Thermal Protection**
- Per current NEC.

Dimensions - Installed Fixture



Options

- 32 Trim extender. Broadens trim flange O.D. by 1".
- 40 White grooveless flare trim instead.
- 45 Gasket between trim flange and ceiling. (Minimizes dust streaks on ceiling.)

- 46 Gasket between lens and trim. Minimizes contaminant and dust entry.
- 79 Extension collar for up to 2" thick ceilings.
- 94 Custom color flare trim. Consult factory.
- 99 Special modification. Consult factory.
- FT Flat white trim instead.

- LP With lamp. 250 watt incandescent R40 Infrared heat. 5000 hour life rating.
- TA Top access modification for servicing from above.

THE KIRLIN COMPANY

3401 EAST JEFFERSON AVENUE • DETROIT, MICHIGAN 48207-4232
(313) 259-6400 • Fax: (313) 259-9409 OR (313) 259-3121 • www.kirlinlighting.com

MAXIMUM WATTAGE

CATALOG NUMBER

**INCANDESCENT
HEALTHCARE FACILITY LIGHTING**

250 Watt R40

RR60921

DUE TO OUR CONTINUING EFFORT TO IMPROVE PRODUCTS, TECHNICAL INFORMATION IS SUBJECT TO CHANGE WITHOUT NOTICE.

Alzak® is a registered trademark of ALCOA.