

MEDICAL WARMING LIGHT: Newborn, Burn, Trauma

Features

Lamp Assembly

- Designed for: 250 watt (maximum) 5000 hour life incandescent R40 infrared heat lamp (by others).
- Glazed porcelain medium base socket.

Reflector

- Specular Alzak® aluminum.

Trim Assembly

- White grooveless self-flanged flare trim
- Seamless aluminum construction.
- Regressed clear Fresnel lens.
- Torsion springs retain snug fit to ceiling.

Housing

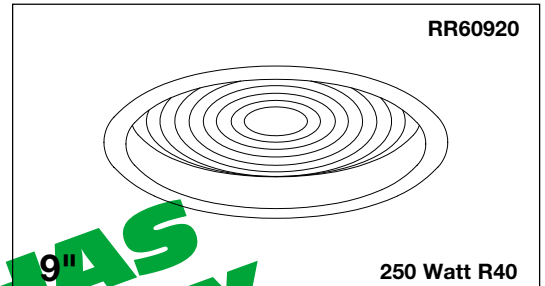
- Acrylic enameled aluminum.
- Cool: Dissipates heat across entire surface area. Louvered for additional ventilation.
- Rustproof: Exceeds 1000 hour ASTM 5% salt spray test.
- Entire luminaire serviced through removable trim assembly.
- Built-in plaster frame.

Outlet Box

- Prewired 14 GA (NEC) galvanized steel, UL listed, with removable insulated cover.
- 1/2" and 3/4" knockouts.

Installation

- 27" galvanized hanger bars supplied (2).
- Fully adjustable universal mounting brackets supplied (4).
- Recesses indoor or outdoor in covered locations.



Fresnel Lens Transmits Warmth While Protecting Environment Below

See RR60921 for Stainless Steel Screen Version

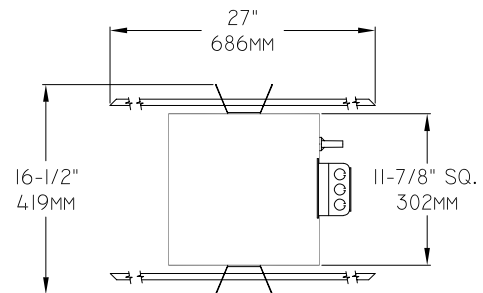
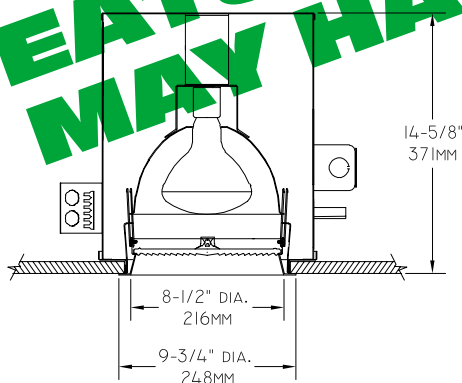
UL, C-UL (Canada) Listings

- Wet, damp or dry locations, covered ceilings.
- Through-branch circuit conductors (6#12). Supply wire rating 90°C.

Three Year Limited Warranty

- Complete standard fixture.
- **Thermal Protection**
- Per current NEC.

Dimensions - Installed Fixture



Options

- | | | |
|--|--|---|
| -32 Trim extender. Broadens trim flange O.D. by 1". | -79 Extension collar for up to 2" thick ceilings. | -OG OptiGroove black milligroove seamless aluminum self-flanged trim. White flange. |
| -45 Gasket between trim flange and ceiling. (Minimizes dust streaks on ceiling.) | -94 Custom color flare trim. Consult factory. | -TA Top access modification for servicing from above. |
| -46 Gasket between lens and trim. Minimizes contaminant and dust entry. | -99 Special modification. Consult factory. | |
| | -FT Flat white trim instead. | |
| | -LP With lamp. 250 watt incandescent R40 Infrared heat. 5000 hour life rating. | |

THE KIRLIN COMPANY

3401 EAST JEFFERSON AVENUE • DETROIT, MICHIGAN 48207-4232
(313) 259-6400 • Fax: (313) 259-9409 OR (313) 259-3121 • www.kirlinlighting.com

MAXIMUM WATTAGE

CATALOG NUMBER

**INCANDESCENT
HEALTHCARE FACILITY LIGHTING**

250 Watt R40

RR60920

DUE TO OUR CONTINUING EFFORT TO IMPROVE PRODUCTS, TECHNICAL INFORMATION IS SUBJECT TO CHANGE WITHOUT NOTICE.

Alzak® is a registered trademark of ALCOA.