

### MEDICAL EXAM LIGHT: Long Life 4000 Hour 500 Watt PAR 56 Tungsten Halogen

#### Features

##### Lamp Assembly

- Designed for: 500 watt (maximum) 4000 hour tungsten halogen medium flood lamp (by others).
- Long life (4000 hour) PAR 56 lamp reduces likelihood of total light loss during exams or procedures. Compare to fixtures using 500 watt T-4 lamps (only 2000 hours).
- Tilts 90° for relamping.
- Safety tempered prismatic C#73 flat glass reduces glare to the patient by eliminating direct view of lamp and provides protective lamp shield.
- 3000°K color temperature and 100 CRI for accurate tissue rendering and patient evaluation.
- Unglazed porcelain mogul end-prong vertical socket.

##### Reflector

- Self-flanged parabolic specular Alzak®.
- Highly polished to produce ultra low brightness and maximum visual comfort for patient.

##### Housing

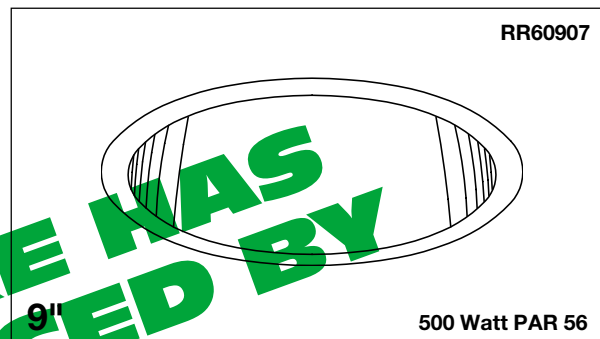
- Acrylic enameled aluminum.
- Cool: Dissipates heat across entire surface area. Ventilated for convection cooling.
- Rustproof: Exceeds 1000 hour ASTM 5% salt spray test.
- Entire luminaire serviced through removable reflector.
- Built-in plaster frame.

##### Outlet Box

- Prewired 14GA (NEC) galvanized steel, UL listed, with removable insulated cover.
- 1/2" and 3/4" knockouts.

##### Installation

- Label provided to ensure proper lamp



**63% Efficiency**  
**High Lumen Output - Dimmable**

- installation relative to bed orientation.
- 27" galvanized hanger bars supplied (2).
- Fully adjustable universal mounting brackets supplied (4).
- Recesses indoor or outdoor in covered locations. Lightweight, 15 pounds.
- UL, C-UL (Canada) Listings**
- Wet, damp or dry locations, covered ceilings.
- Through-branch circuit conductors (6#12). Supply wire rating - 90°C.

##### Three Year Limited Warranty

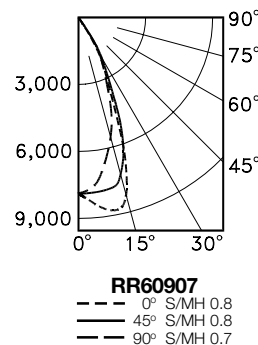
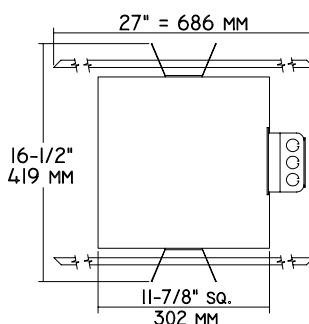
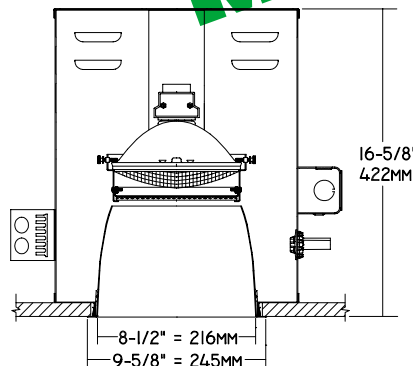
- Complete standard fixture.

##### Thermal Protection

- Per current NEC.

#### Dimensions and Performance - Installed Fixture

FROM I.T.L. (BOULDER, CO) TEST NUMBER 43319



CANDLEPOWER DISTRIBUTION					
	0.0	22.5	45.0	67.5	90.0
0	7893	7893	7893	7893	7893
5	8269	8136	7899	7600	7506
15	8070	7876	7130	6064	5362
25	2554	2808	3278	2979	2576
35	376	381	464	475	431
45	133	133	138	138	122
55	22	22	22	22	22
65	0	0	0	0	0
75	0	0	0	0	0
85	0	0	0	0	0
90	0	0	0	0	0

#### Options

- 30 White self-flanged reflector.
- 31 White flange (only) on Alzak reflector.
- 32 Trim extender. Broadens trim flange O.D. by 1".
- 45 Gasket above reflector flange. (Minimizes dust streaks on ceiling.)
- 94 Custom color flare trim. Consult factory.
- LP With lamp. 500 watt PAR 56 medium flood tungsten halogen. 4000 hour life rating.

## THE KIRLIN COMPANY

3401 EAST JEFFERSON AVENUE • DETROIT, MICHIGAN 48207-4232  
(313) 259-6400 • Fax: (313) 259-9409 OR (313) 259-3121 • www.kirlinlighting.com

MAXIMUM WATTAGE

CATALOG NUMBER

**TUNGSTEN HALOGEN  
HEALTHCARE FACILITY LIGHTING**

**500 PAR 56**

**RR60907**

DUE TO OUR CONTINUING EFFORT TO IMPROVE PRODUCTS, TECHNICAL INFORMATION IS SUBJECT TO CHANGE WITHOUT NOTICE.

Alzak® is a registered trademark of ALCOA.

RR60907

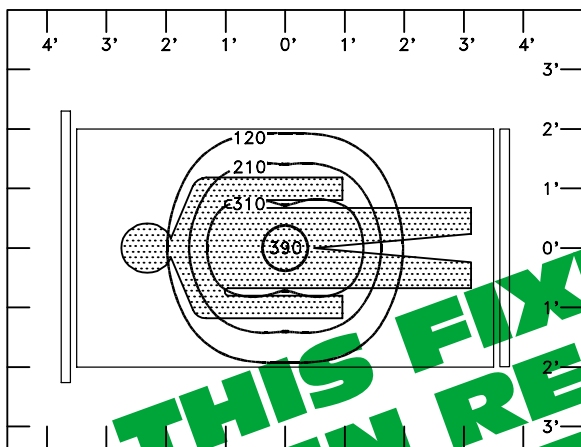
RECESSED ROUND: 500 WATT PAR 56 TUNGSTEN HALOGEN

KIRLIN

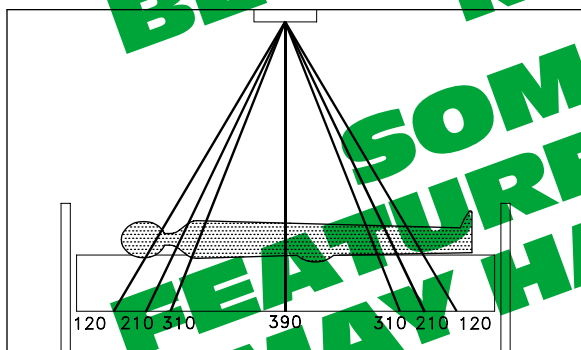
## Footcandle Distribution Data

FROM I.T.L. (BOULDER, CO) TEST NUMBER 43316

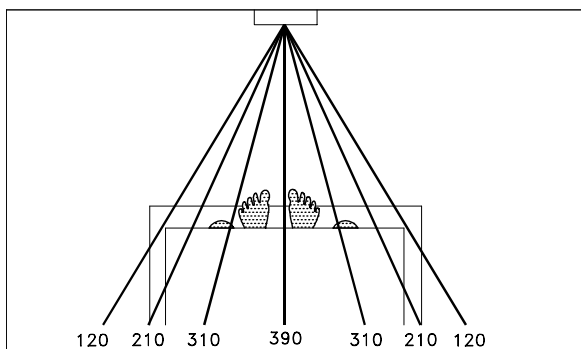
PLAN VIEW CEILING HEIGHT 8' • WORK PLANE 3'6"



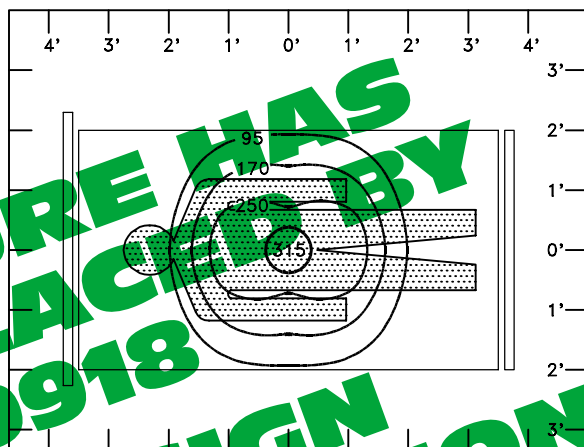
SIDE VIEW



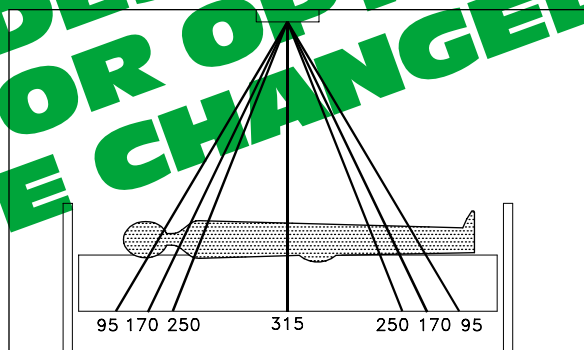
FRONT VIEW



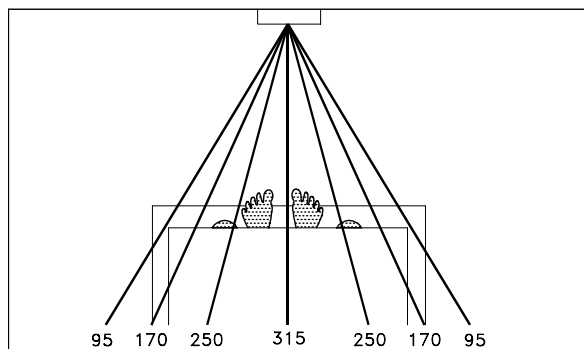
PLAN VIEW CEILING HEIGHT 8'6" • WORK PLANE 3'6"



SIDE VIEW



FRONT VIEW



- Notes:
1. All lighting levels are expressed in footcandles, with distances expressed in feet, as measured at the work plane (3'6").
  2. The work plane (3'6") is defined as: examination bed height, plus patient body depth.
  3. Fixture is centered over examination bed with its longest axis parallel to the length of the bed.

SUBMITTAL DATA

APPROVAL STAMP

JOB NAME \_\_\_\_\_

TYPE \_\_\_\_\_

WATTAGE \_\_\_\_\_ VOLTAGE \_\_\_\_\_

CATALOG NUMBER \_\_\_\_\_

\_\_\_\_\_

LIMITED WARRANTY: CATALOGED KIRLIN FIXTURES ARE WARRANTED FREE OF DEFECTS IN WORKMANSHIP OR MATERIAL, FOR THREE YEARS FROM DATE OF PURCHASE. INSTALLED TO N.E.C. IN NORMAL USE. Manufacturer at this option will replace or repair such fixture or refund the purchase price on presentation of proof of purchase and defective fixture at the offices of manufacturer within three years of original shipment. Liability of manufacturer is limited to the foregoing, and manufacturer shall not be liable for any other damages, direct or indirect, sustained or incurred by purchase or any person. This warranty is supplied for the purpose of providing a basis for comparison of products and is not intended to constitute a contract. Seller does not warrant as to merchantability or fitness for a particular use, nor will any oral statement constitute a warranty or amend this specific warranty. Abuse of the fixture, improper installation, or repair or modification of the fixture without prior written authorization from the manufacturer will void this warranty.