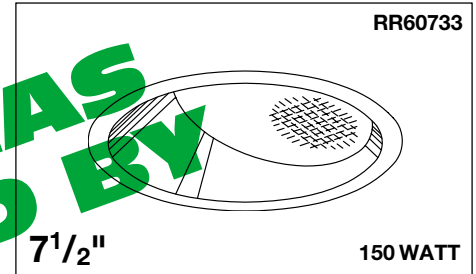


Healthcare: MRI

NON-MAGNETIC CONSTRUCTION FOR MRI USE

Fixture shall be built of non-magnetic materials and suitable for use in M.R.I. (Magnetic Resonance Imaging) Rooms.

Lamp to be suitable for operation on D.C. circuits.



Lensed Wall Wash Illumination

Features

Lamp

- Designed for 150 watt (maximum) Par 38 lamp
- For operation on D.C. circuits

Socket

- Offset, Medium base.
- Glazed porcelain.
- Nickel-plated brass screw shell.
- Silicone leads.

Reflector

- Self-flanged specular Alzak® aluminum.
- Non-magnetic torsion spring retention ensures snug fit to ceiling.
- White flange optional.
- Optional champagne gold or pewter Alzak, or all white reflectors available.

Lens

- Prismatic tempered C#73 spread lens. Spreads wall wash light uniformly.

Housing

- Acrylic enameled aluminum.
- Cool: Dissipates heat across entire surface area.
- Rustproof: Exceeds 1000 hour ASTM 5% salt spray test.
- Entire luminaire serviced through removable reflector assembly.
- Built-in plaster frame.

Outlet Box

- Prewired, 100% aluminum. UL listed.
- Accessible through fixture opening.

Installation

- 27" aluminum channel bar hangers supplied (2).
- Fully adjustable non-magnetic universal mounting brackets supplied (2).

UL, C-UL (Canada) Listings

- Wet, damp or dry locations, covered ceilings.
- Through-branch circuit conductors (up to 6#12).

Three Year Limited Warranty

- Complete standard fixture.

Thermal Protection

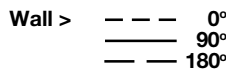
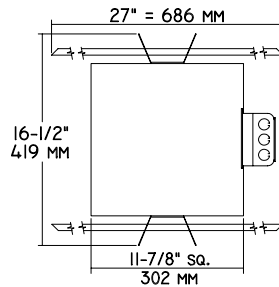
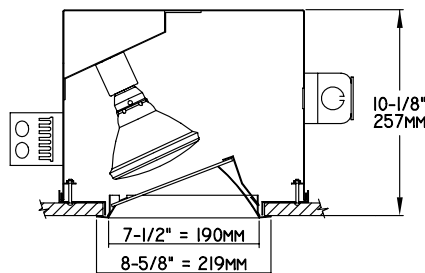
- Per current NEC.

THIS FIXTURE HAS BEEN REPLACED BY RR600737 SOME OF OUR DESIGN FEATURES FOR OPTIONS MAY HAVE CHANGED

NOT RESTRICTED TO END-OF-RUN USE

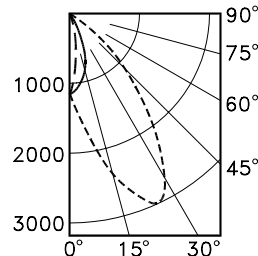
Performance at a Glance

RR60733



DISTANCE FROM CEILING IN FEET	SINGLE FIXTURE				MULTIPLE FIXTURES						
	1'	2'	3'	4'	3' CENTERS			4' CENTERS			
FIXTURE INSTALLED 3" FROM WALL											
Footcandle Distribution on Wall Surface											
1	3.01	2.47	1.9	1.7	1.5	9.2	8.8	9.2	7.7	7.0	7.7
2	19.2	12.0	4.7	2.1	1.5	26.0	19.9	26.0	23.9	12.4	23.9
3	40.6	26.2	10.4	3.5	1.8	50.3	39.7	50.3	46.1	23.9	46.1
4	44.7	31.3	14.8	5.4	2.5	58.4	51.0	58.4	51.6	32.8	51.6
5	37.3	27.8	15.3	6.7	3.2	53.8	49.5	53.8	45.6	34.2	45.6
6	27.7	21.9	13.6	7.0	3.7	45.1	43.0	45.1	37.2	31.0	37.2
7	19.6	16.3	11.3	6.6	3.9	36.5	35.9	36.5	29.5	26.6	29.5
8	13.9	12.1	9.1	5.9	3.9	29.7	29.6	29.7	23.7	22.5	23.7
9	10.2	9.2	7.4	5.4	3.8	25.0	25.1	25.0	19.7	19.3	19.7

RR60733



THE KIRLIN COMPANY

3401 EAST JEFFERSON AVENUE • DETROIT, MICHIGAN 48207-4232
(313) 259-6400 • Fax: (313) 259-9409 OR (313) 259-3121

LAMP

MAXIMUM WATTAGE

CATALOG NUMBER

MRI INCANDESCENT
HEALTHCARE LIGHTING

Par 38

150

RR60733

THE KIRLIN COMPANY RESERVES THE RIGHT TO CHANGE, WITHOUT NOTICE, DETAILS OR SPECIFICATIONS IN PRODUCT DESIGN.

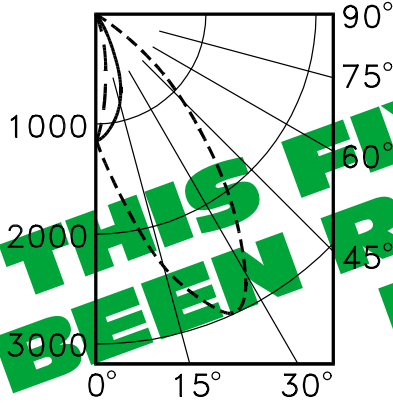
Alzak® is a registered trademark of ALCOA.

Detailed Photometry - Installed Fixture

RR60733

CANDLEPOWER DISTRIBUTION

	0.0	45.0	90.0	135.0	180.0
0	1169	1169	1169	1169	1169
5	1508	1379	1090	884	793
15	2452	1639	771	406	303
25	3023	1449	436	170	117
35	2224	890	194	77	57
45	1110	375	75	38	32
55	361	115	32	20	16
65	71	26	12	4	0
75	4	4	2	0	0
85	0	0	0	0	0
90	0	0	0	0	0



Wall > --- 0°
 --- 90°
 --- 180°
 EFFICIENCY = 67.3%

COEFFICIENT OF UTILIZATION

REFLECTOR	70	80	90	50	60	70
1	76	74	72	70	70	68
2	71	68	65	62	64	62
3	67	62	58	55	59	56
4	63	57	53	50	55	49
5	59	53	48	45	51	44
6	56	49	44	41	47	40
7	52	45	41	37	44	37
8	49	42	38	34	41	37
9	47	39	35	32	38	32
10	44	37	32	30	36	29

Estimated Multiplier

- 16 Champagne Gold Alzak®: CP x .95
- 30 White: CP x .90
- 93 Pewter: CP x .85

THIS FIXTURE HAS BEEN REPLACED BY RR60733 SOME DESIGN FEATURES OR OPTIONS MAY HAVE CHANGED

Options

- 16 Champagne Gold anodized Alzak reflector. (CP x .95)
- 30 All white self-flanged reflector. (CP x .90)
- 31 White flange on reflector.
- 45 Gasket between trim and ceiling. (Minimizes dust streaks on ceiling.)
- 93 Pewter Alzak self-flanged reflector. (CP x .85)
- 94 Custom color reflector or flange. Consult factory.
- 99 Special modification. Consult factory.

SUBMITTAL DATA

APPROVAL STAMP

JOB NAME _____

TYPE _____

WATTAGE _____ VOLTAGE _____

CATALOG NUMBER _____

LIMITED WARRANTY: CATALOGED KIRLIN FIXTURES ARE WARRANTED FREE OF DEFECTS IN WORKMANSHIP OR MATERIAL FOR THREE YEARS FROM DATE OF PURCHASE. INSTALLATION, ETC., IS NORMAL USE. Manufacturer at his option will replace or repair such fixture or refund the purchase price on presentation of proof of purchase and defective fixture at the office of manufacturer within the first year of original shipment. Liability of manufacturer is limited to the foregoing, and manufacturer shall not be liable for any other damages, direct or indirect, sustained or suffered by purchaser or any person. This warranty is supplied for the fixture in place of all other warranties, expressed or implied. Seller does not warrant as to merchantability or fitness for a particular use, nor warranty or statement constitute a warranty or amend this specific warranty. Abnormal use, abuse of fixture, improper installation, or repair, or modification of the fixture without prior written authorization from the manufacturer will void the warranty void.