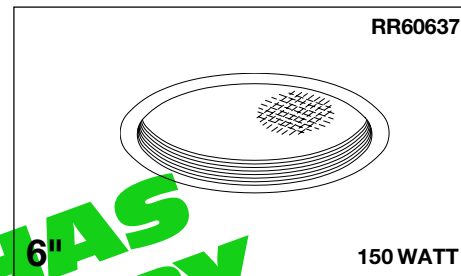


### Healthcare: MRI

#### NON-MAGNETIC CONSTRUCTION FOR MRI USE

Fixture shall be built of non-magnetic materials and suitable for use in M.R.I. (Magnetic Resonance Imaging) Rooms.

Lamp to be suitable for operation on D.C. circuits.



Uniform Illumination

#### Features

##### Lamp

- Designed for: 150 watt (maximum) inside frosted A-21.
- For operation on D.C. circuits.

##### Socket

- Horizontal.
- Medium base. Glazed porcelain.
- Nickel-plated brass screw shell. Silicone leads.

##### Reflector

- Specular Alzak® aluminum.

##### Trim Assembly

- Seamless, tapered black OptiGroove with white flange.
- Prismatic low brightness, spread distribution lens.

- Self-flanged trim.
- Non-ferrous torsion springs retain snug fit to ceiling.
- Optional lenses, flat trim, or white flare trim available. See Options.

##### Housing

- Acrylic enameled aluminum.
- Cool: Dissipates heat across entire surface area.
- Rustproof: Exceeds 1000 hour ASTM 5% salt spray test.
- Entire luminaire serviced through removable trim assembly.
- Built-in blaster frame.

##### Outlet Box

- 100% aluminum.

##### Installation

- 27" aluminum channel bar hangers supplied (2).
- Fully adjustable non-magnetic universal mounting brackets supplied (2).

##### UL, C-UL (Canada) Listings

- Wet, damp or dry locations, covered ceilings.
- Through-branch circuit conductors (up to #6/12).

##### Three Year Limited Warranty

- Complete standard fixture.

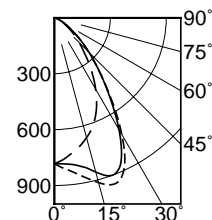
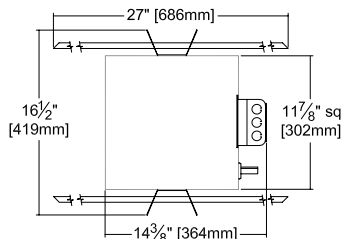
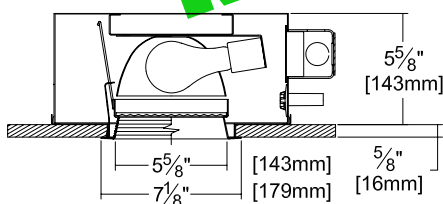
##### Thermal Protection

- Per current NEC.

NOT RESTRICTED TO END-OF-RUN USE

#### Performance at a Glance

RR60637



#### Cone of Light\*

Ft.	FC	Dia.
6	21.8	7.2
8	12.2	9.6
10	7.8	12.0
12	5.4	14.4
14	4.0	16.8
16	3.1	19.2

--- 0° S/MH 1.3  
 --- 90° S/MH 1.2  
 --- 180° S/MH 0.9

#### Cone of Light Key

**Ft.** Mounting height  
**FC** Footcandles  
**Dia.** Circle of light at 50% of FC

\* Dia. (in ft.) shown is where FC value is half the FC at nadir.

## THE KIRLIN COMPANY

3401 EAST JEFFERSON AVENUE • DETROIT, MICHIGAN 48207-4232  
 (313) 259-6400 • Fax: (313) 259-9409 OR (313) 259-3121

LAMP

MAXIMUM WATTAGE

CATALOG NUMBER

MRI INCANDESCENT  
 HEALTHCARE LIGHTING

A21

150

RR60637

THE KIRLIN COMPANY RESERVES THE RIGHT TO CHANGE, WITHOUT NOTICE, DETAILS OR SPECIFICATIONS IN PRODUCT DESIGN.

Alzak® is a registered trademark of ALCOA.

### Detailed Photometry - Installed Fixture

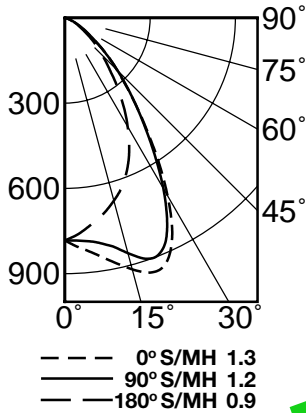
FROM I.T.L. (BOULDER, CO)

RR60637 (150W): TEST NUMBER 47287

RR60637 (100W): TEST NUMBER 47285

#### RR60637 150W

#### CANDLEPOWER DISTRIBUTION



	0.0	45.0	90.0	135.0	180.0
0	783	783	783	783	783
5	819	809	788	764	751
15	916	905	857	479	666
25	886	904	847	689	534
35	530	570	517	435	346
45	259	256	262	211	187
55	105	112	109	104	87
65	33	38	40	40	38
75	5	6	7	7	7
85	0	0	0	0	0
90	0	0	0	0	0

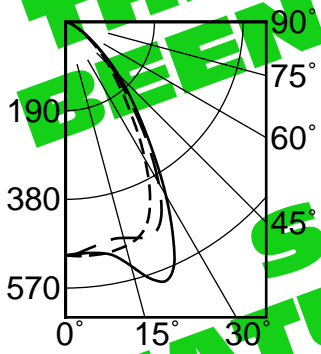
#### COEFFICIENTS OF UTILIZATION

RF	20						
	80			50			
	RW	70	50	30	10	50	30
1	51	50	48	47	47	46	45
2	48	45	43	41	43	41	40
3	45	41	39	36	39	37	36
4	42	38	35	33	36	34	32
5	39	35	32	29	33	31	29
6	37	32	29	26	31	28	26
7	35	30	26	24	29	26	24
8	33	27	24	22	27	24	22
9	31	26	22	20	25	22	20
10	29	24	21	19	23	21	19

EFFICIENCY = 45.7%

#### RR60637 100W

#### CANDLEPOWER DISTRIBUTION



	0.0	45.0	90.0	135.0	180.0
0	500	500	500	500	500
5	503	502	497	492	490
15	497	544	541	499	479
25	427	507	551	510	477
35	247	297	311	318	294
45	128	133	158	142	143
55	55	63	66	64	62
65	21	28	23	21	20
75	4	4	4	4	4
85	0	0	0	0	0
90	0	0	0	0	0

#### COEFFICIENTS OF UTILIZATION

RF	20						
	80			50			
	RW	70	50	30	10	50	30
1	52	50	49	48	47	46	45
2	49	46	44	42	44	42	40
3	45	42	39	37	40	38	36
4	43	38	35	33	37	34	32
5	40	35	32	30	34	31	29
6	37	33	29	27	31	29	27
7	35	30	27	25	29	26	24
8	33	28	25	22	27	24	22
9	31	26	23	21	25	23	21
10	29	24	21	19	24	21	19

EFFICIENCY = 46.0%

### Options

- 18 Anoplat flat glass. Not enameled. Diffusing. May also be used with optional trims.
- 20 White 1/2" cube eggcrate aluminum louver.
- 40 White grooveless flare trim assembly instead. With prismatic flat glass or add Option -18 or -FR.
- 45 Gasket between trim flange and ceiling. Minimizes dust streaks on ceiling.
- 46 Gasket between lens and trim. Minimizes contaminants and insect entry.
- 94 Custom color OptiGroove, flare trim and / or flange. Consult factory.
- 99 Special modification. Consult factory.
- FR Fresnel lens instead. Concentric prisms. May also be used with optional trims.
- FT Flat white trim instead. Standard with prismatic flat glass or add Option -18 or -FR.

### SUBMITTAL DATA

### APPROVAL STAMP

JOB NAME \_\_\_\_\_

TYPE \_\_\_\_\_

WATTAGE \_\_\_\_\_ VOLTAGE \_\_\_\_\_

CATALOG NUMBER \_\_\_\_\_

LIMITED WARRANTY: CATALOGUED KIRLIN FIXTURES ARE WARRANTED FREE OF DEFECTS IN WORKMANSHIP OR MATERIAL FOR THREE YEARS FROM DATE OF PURCHASE. INSTALL TO N.E.C. IN NORMAL USE. Manufacturer at his option will replace or repair such fixture or refund the purchase price on presentation of proof of purchase and defective fixture at the offices of manufacturer within three years of original shipment. Liability of manufacturer is limited to the foregoing, and manufacturer shall not be liable for any other damages, direct or indirect, sustained or suffered by purchaser or any person. This warranty is supplied to the buyer in place of all other warranties, expressed or implied. Seller does not warrant as to merchantability or fitness for particular use, nor will any oral statement constitute a warranty of any kind. Abnormal use, abuse of the fixture, improper installation, or repair, or modification of the fixture without prior written authorization by the manufacturer will void the warranty.