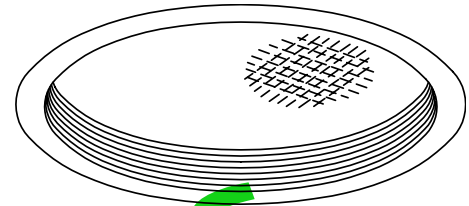


9"

REGRESSED LENS: SCHOOL / OFFICE



Features

Lamp

- Designed for 175 watt clear E/ED-17 vertical.
- See Option -43 for optional lower wattage.
- Option -23 for Mercury, Option -24 for HPS.

Socket

- Vertical. Medium base.
- Glazed porcelain.
- Nickel-plated brass screw shell. Silicone leads.

Reflector

- Specular Alzak® aluminum.

Trim Assembly

- Seamless tapered black OptiGroove with white flange.
- Self-flanged trim.
- UV absorbing tempered low brightness prismatic glass.
- Torsion springs retain snug fit to ceiling.
- Optional white grooveless flare assembly instead (Option -40).

Ballast Assembly

- WhisperPack™ fully encapsulated 180°C rated HPF ballast.
- Premium Class H; CWA 10:10 regulation.
- Capacitor supplied.
- 120 volt standard or see optional voltages.
- Cool, quiet, long-life. Silicone leads.
- Visible and easily serviced in all ceilings including dry wall.

Fuse

- Fused primary. Renewable. Aids servicing.

Housing

- Acrylic enameled aluminum.
- Cool: Dissipates heat across entire surface area.
- Rustproof: Exceeds 1000 hour ASTM 5% salt spraytest.

- Entire luminaire serviced through removable trim assembly.
- Built-in plaster frame.

Outlet Box

- Prewired 14 GA (NEC) galvanized steel, UL listed.
- Removable insulated cover.
- 1/2" and 3/4" knockouts.

Installation

- 27" galvanized channel bar hanger supplied (2).
- Fully adjustable universal mounting brackets supplied (2).
- Recesses indoor or outdoor in covered locations.

UL Listing

- Wet, damp or dry locations, covered ceilings.
- Through-branch circuit conductors (6 #12).

Three Year Limited Warranty

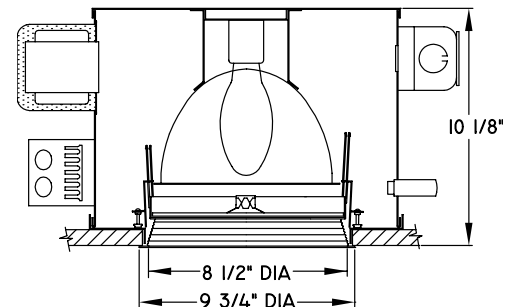
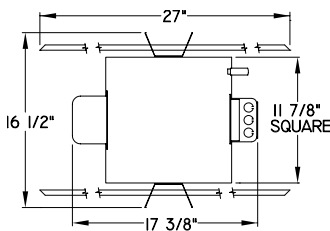
- Complete standard fixture.

Thermal Protection

- Per current NEC.

THIS FIXTURE HAS BEEN REPLACED BY THE RR-08062000. SOME DESIGN CHANGES MAY HAVE OCCURRED.

APPROVAL STAMP



THE KIRLIN COMPANY

3401 EAST JEFFERSON AVENUE ■ DETROIT, MICHIGAN 48207-4232
(313) 259-6400 ■ FAX: (313) 259-9409 OR (313) 259-3121

**HIGH EFFICIENCY
METAL HALIDE LIGHTING**

LAMP
E/ED-17

WATTAGE
175

RR50921

DATA

SUBMITTAL

VOLTAGE

WATTAGE

TYPE

MODEL

JOB NAME

LOCATION

RR50921 RECESSED ROUND: 175 WATT MEDIUM BASE METAL HALIDE

Performance at a Glance - Installed Fixture

RR50921

Ft.	FC	DIA.
6	204.6	6.0
8	115.1	8.0
10	73.6	10.0
12	51.1	12.0
14	37.6	13.9
16	28.8	15.9

RR50921-FR

Ft.	FC	DIA.
6	356.7	3.5
8	200.6	4.7
10	128.4	5.8
12	89.2	7.0
14	65.5	8.2
16	50.2	9.4

RR50921-HO

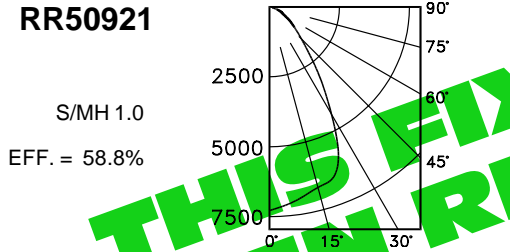
Ft.	FC	DIA.
6	492.5	2.2
8	277.0	3.0
10	177.3	3.7
12	123.1	4.4
14	90.5	5.2
16	69.3	5.9

Cone of Light Key

Ft. Distance to surface from fixture (mounting height)
FC. Footcandles
DIA. Diameter (in feet) of the circle of light when FC value is half the FC at nadir.

Photometric Data - Installed Fixture

RR50921



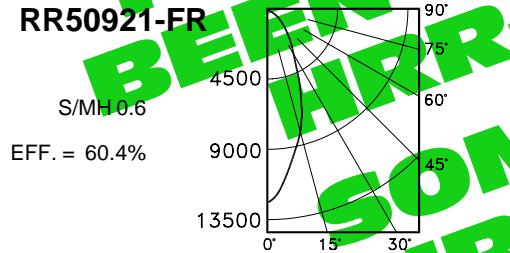
CANDLEPOWER DISTRIBUTION

	0.0	22.5	45.0	67.5	90.0
0	7364	7364	7364	7364	7364
5	7263	7263	7263	7263	7263
15	6771	6771	6771	6771	6771
25	5965	5965	5965	5965	5965
35	3038	3038	3038	3038	3038
45	1427	1427	1427	1427	1427
55	726	726	726	726	726
65	316	316	316	316	316
75	88	88	88	88	88
85	0	0	0	0	0
90	0	0	0	0	0

COEFFICIENTS OF UTILIZATION

FC	80				50			
	RW	70	50	30	10	50	30	10
1	66	64	62	61	60	59	58	58
2	62	59	56	53	56	53	52	52
3	58	54	50	47	51	48	46	46
4	55	49	45	43	47	44	42	42
5	51	45	41	38	44	40	38	38
6	48	42	38	35	41	37	35	35
7	45	39	35	32	38	34	32	32
8	43	36	32	30	35	32	29	29
9	40	34	30	27	33	30	27	27
10	38	32	28	26	31	28	25	25

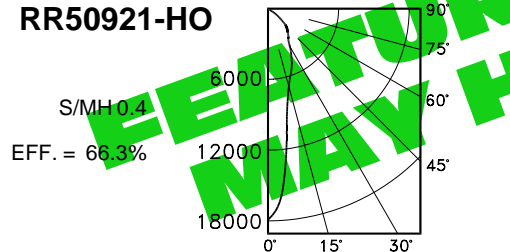
RR50921-FR



	0.0	22.5	45.0	67.5	90.0
0	12841	12841	12841	12841	12841
5	11140	11140	11140	11140	11140
15	8133	8133	8133	8133	8133
25	4092	4092	4092	4092	4092
35	2758	2758	2758	2758	2758
45	1458	1458	1458	1458	1458
55	689	689	689	689	689
65	290	290	290	290	290
75	85	85	85	85	85
85	0	0	0	0	0
90	0	0	0	0	0

FC	80				50			
	RW	70	50	30	10	50	30	10
1	68	66	64	63	62	61	60	60
2	64	61	58	55	58	55	54	54
3	60	56	52	50	53	51	48	48
4	57	51	48	45	49	46	44	44
5	53	48	44	41	46	43	40	40
6	50	44	40	37	43	40	37	37
7	48	41	37	35	40	37	34	34
8	45	39	35	32	38	34	32	32
9	43	37	33	30	36	32	30	30
10	41	35	31	28	34	30	28	28

RR50921-HO



	0.0	22.5	45.0	67.5	90.0
0	17731	17731	17731	17731	17731
5	14939	14939	14939	14939	14939
15	6763	6763	6763	6763	6763
25	4551	4551	4551	4551	4551
35	2681	2681	2681	2681	2681
45	2160	2160	2160	2160	2160
55	1010	1010	1010	1010	1010
65	285	285	285	285	285
75	57	57	57	57	57
85	0	0	0	0	0
90	0	0	0	0	0

FC	80				50			
	RW	70	50	30	10	50	30	10
1	75	72	71	69	68	67	66	66
2	70	66	63	60	63	60	58	58
3	66	61	57	54	58	55	52	52
4	62	58	51	48	53	50	47	47
5	58	52	47	44	50	46	43	43
6	55	48	43	40	46	42	39	39
7	52	45	40	37	43	39	36	36
8	49	42	37	34	40	37	34	34
9	46	39	35	32	38	34	32	32
10	44	37	33	30	36	32	30	30

Options

- 23 Mercury ballast instead. 100ME standard or see Option -43. Specify voltage.
- 24 HPS ballast instead. 150ME standard or see Option -43. Specify voltage.
- 26 Tamper-proof trim. Flush recessed hex screws with center pin secure trim to housing. Continuous ring and four screws secure lens. One key provided/ten fixtures. Also see Option -27.
- 27 Clear 1/4" tempered glass beneath prismatic flat lens, for vandal resistance. Also see Option -26.
- 29 White Son ballast instead. For ED-17 medium base lamp. 100 watt standard in 120 volt only. Consult factory for 277 volt.
- 40 White grooveless flare trim assembly instead.
- 43 Lower wattage medium base - specify voltage and wattage for: Metal Halide: 150, 100, 70, 50, 32 (GE Halarc™ electronic ballast - minimum 50°F); Mercury: 75, 50; HPS: 100, 70, 50, 35; White son: 50.
- 45 Gasket above trim flange (between trim and ceiling).
- 46 Gasket between trim and lens.
- 49 Extra circuit DCB socket. (100W max.) Must not be energized simultaneously with main source.
- 58 277 volt 60 Hz. ballast instead.
- 65 Relay and DCB socket. (100W max.) With fixture energized, provides immediate light during HID outage. Also see Option -66.
- 66 Time delay relay and DCB socket. (100W max.) When energized, provides light until HID reaches 70% output.
- 94 Custom color trim assembly. Consult factory.
- 97 Other voltage ballasts. Consult factory.
- 99 Special modification. Consult factory.
- FR Fresnel tempered lens instead. Concentric prisms.
- FT Flat white trim instead. Standard with UV absorbing tempered prismatic glass or add Option -FR or -HO.
- HO Holophane tempered concave prismatic lens instead.
- LP With lamp. Specify source, wattage, color temperature, and clear or coated (3200°K standard for MH). Consult factory for other color temperatures.
- LS With tungsten halogen standby lamp. (100W max.) Use only with Options -49, -65 or -66.

THE KIRLIN COMPANY

3401 EAST JEFFERSON AVENUE ■ DETROIT, MICHIGAN 48207-4232
 (313) 259-6400 ■ FAX: (313) 259-9409 OR (313) 259-3121

RR50921

WATTAGE 175 LAMP E/ED-17

HIGH EFFICIENCY METAL HALIDE LIGHTING

LIMITED WARRANTY: CATALOGUED KIRLIN FIXTURES ARE WARRANTIED FREE OF DEFECTS IN WORKMANSHIP OR MATERIAL FOR THREE YEARS FROM DATE OF PURCHASE. INSTALLLED TO N.E.C. IN NORMAL USE. Manufacturer at this option will replace or repair such fixture or refund the purchase price on presentation of proof of purchase and defective fixture at the offices of manufacturer within three years of original shipment. Liability of manufacturer is limited to the foregoing, and manufacturer shall not be liable for any other damages, direct or indirect, sustained or suffered by purchaser or any person. This warranty is supplied to the buyer in place of all other warranties, expressed or implied. Seller does not warrant as to merchantability or fitness for a particular use, nor will any oral statement constitute a warranty or amend this specific warranty. Abnormal use, abuse of the fixture, improper installation, or repair, or modification of the fixture without prior written authorization from the manufacturer will render the warranty void.