

### OPEN DOWNLIGHT: OFFICE/RETAIL

#### Features

##### Lamp

- 100 watt coated ED-17 open fixture.
- See Option -43 for optional lower wattage.
- Option -23 for Mercury, Option -24 for HPS.

##### Socket

- Vertical. Pulse rated extended body for open fixture medium base lamps.
- Glazed porcelain.
- Nickel-plated brass screw shell. Silicone leads.

##### Reflector

- Self-flanged specular Alzak® aluminum.

##### Ballast Assembly

- Whisper Pack™ fully encapsulated 180°C rated HPF ballast.
- Premium Class H high reactance with 5:12 regulation.
- Capacitor and ignitor supplied.
- 120 volt standard or see optional voltages.
- Cool, quiet, long-life. Silicone leads.
- Visible and easily serviced in all ceilings including dry wall.

##### Fuse

- Fused primary. Renewable. Aids servicing.

##### Housing

- Acrylic enameled aluminum.
- Cool: Dissipates heat across entire surface area.
- Rustproof: Exceeds 1000 hour ASTM 5% salt spray test.



- Entire luminaire serviced through removable reflector.
- Built-in plaster frame.

##### Outlet Box

- Prewired 14 GA (NEC) galvanized steel, UL listed.
- Removable insulated cover.
- 1/2" and 3/4" knockouts.

##### Installation

- 27" galvanized channel bar hangers supplied (2).
- Fully adjustable universal mounting brackets supplied (2).
- Recesses indoor or outdoor in covered locations.

##### UL Listing

- Wet, damp or dry locations, covered ceilings.
- Through-branch circuit conductors (6#12).

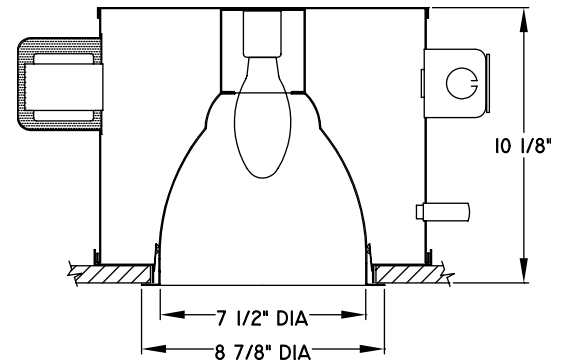
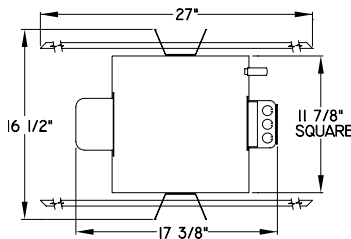
##### Three Year Limited Warranty

- Complete standard fixture.

##### Thermal Protection

- Per current NEC.

#### APPROVAL STAMP



## THE KIRLIN COMPANY

3401 EAST JEFFERSON AVENUE ■ DETROIT, MICHIGAN 48207-4232  
(313) 259-6400 ■ FAX: (313) 259-9409 OR (313) 259-3121

**HIGH EFFICIENCY  
METAL HALIDE LIGHTING**

LAMP  
**ED-17**

WATTAGE  
**100**

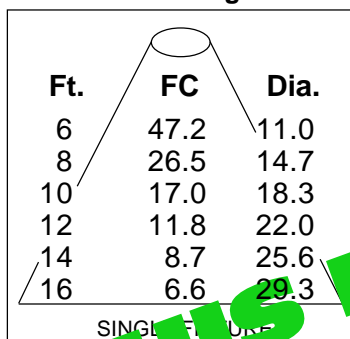
# RR50703

# RR50703 RECESSED ROUND: 100 WATT MEDIUM BASE METAL HALIDE

**KIRLIN**

## Performance at a Glance - Installed Fixture

### Cone of Light



### Cone of Light Key

- Ft. Mounting height
- FC. Footcandles (average)
- Dia. Circle of light at 3 1/2'

Dim. (d) shown is where FC was half the FC at nadir

RR50703: LER = 42.7  
AEC = \$5.62

### LER = Luminaire Efficiency Rating

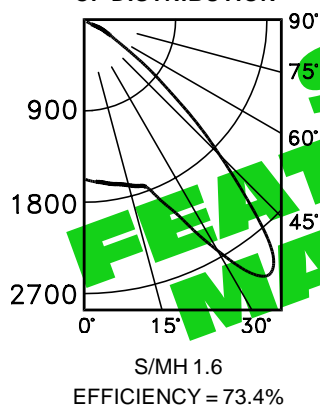
LER = Luminaire Effic. x Total Lamp Lumens x Ballast Factor  
Input Watts

AEC = Annual Energy Cost per 1000 lumens  
(based on 3000 hours use @ \$0.08 KWH)

## Detailed Photometry - In a Fixture

FROM I.T.L. (BOULDER, CO) TEST NUMBER 39848

### CP DISTRIBUTION



### POWER DISTRIBUTION

	0.0	22.5	45.0	67.5	90.0
1698	1698	1698	1698	1698	1698
1720	1720	1720	1720	1720	1720
1813	1813	1813	1813	1813	1813
2161	2162	2162	2162	2162	2162
3260	3260	3260	3260	3260	3260
1929	1929	1929	1929	1929	1929
629	629	629	629	629	629
105	105	105	105	105	105
3	3	3	3	3	3
0	0	0	0	0	0
0	0	0	0	0	0

### COEFFICIENT OF UTILIZATION

		20					
		80			50		
RW	70	50	30	10	50	30	10
1	82	79	77	75	75	73	71
2	76	71	68	64	68	65	62
3	70	64	59	55	61	57	54
4	65	58	52	48	55	51	47
5	60	52	46	42	50	45	41
6	56	47	41	37	45	40	37
7	52	43	37	33	41	36	32
8	48	39	33	29	37	32	29
9	45	35	30	26	34	29	26
10	42	32	27	23	31	27	23

### Estimated Multipliers

-16 Champagne Gold Alzak®: CP x .90  
-92 Umber Alzak: CP x .75

-93 Pewter Alzak: CP x .90  
-OG Black OptiGroove: CP x .75

## Options

- 16 Champagne Gold anodized Alzak reflector. (CP x .90)
- 23 Mercury ballast instead. 100ME standard or see Option -43. Specify voltage.
- 24 HPS ballast instead. 100ME standard or see Option -43. Specify voltage.
- 29 White Son ballast instead. For ED-17 medium base lamp. 100 watt standard in 120 volt only. Consult factory for 277 volt.
- 31 White reflector trim, self-flanged.
- 32 Trim extender. Broadens trim flange O.D. by 1" to cover larger ceiling opening.
- 43 Lower wattage medium base - specify voltage and wattage for: Metal Halide: 70,

- 50, 32 (GE Halarc™ electronic ballast); Mercury: 75, 50; HPS: 70, 50, 35; White Son: 50.
- 45 Gasket above reflector flange. Stops dust streaks on ceiling.
- 58 277 volt 60 Hz. ballast instead.
- 82 Sloped ceiling adapter. Specify slope up to 30° in 5° increments.
- 92 Umber anodized Alzak self-flanged reflector. (CP x .75)
- 93 Pewter anodized Alzak self-flanged reflector. (CP x .90)

- 94 Custom color self-flanged reflector. Consult factory.
- 97 Other voltage ballasts. Consult factory.
- 99 Special modification. Consult factory.
- LP With lamp. Specify source, wattage, color temperature, and clear or coated (3200°K standard for MH.) Consult factory for other color temperatures.
- OG OptiGroove black seamless tapered aluminum. White trim, self-flanged. (CP x .75)

**Note:** If outer envelope (glass bulb) of lamp is broken or punctured, power to the lamp should be immediately turned off and people should vacate the area to avoid ultraviolet radiation exposure, according to the lamp manufacturers.

## THE KIRLIN COMPANY

3401 EAST JEFFERSON AVENUE ■ DETROIT, MICHIGAN 48207-4232  
(313) 259-6400 ■ FAX: (313) 259-9409 OR (313) 259-3121

**RR50703**

WATTAGE

100

LAMP

ED-17

**HIGH EFFICIENCY  
METAL HALIDE LIGHTING**

LIMITED WARRANTY: CATALOGED KIRLIN FIXTURES ARE WARRANTED FREE OF DEFECTS IN WORKMANSHIP OR MATERIAL FOR THREE YEARS FROM DATE OF PURCHASE. INSTALLATION TO N.E.C. IN NORMAL USE. Manufacturer at this option will replace or repair such fixture or refund the purchase price on presentation of proof of purchase and defective fixture at the office of manufacturer within three years of original shipment. Liability of manufacturer is limited to the foregoing and manufacturer shall not be liable for any other damages, direct or indirect, sustained or suffered by purchaser or any person. This warranty is supplied to the buyer in place of all other warranties, expressed or implied. Seller does not warrant the suitability or fitness for a particular use, nor will any oral statement constitute a warranty or amend this specific warranty. Anomalous use, abuse of the fixture, improper installation, or repair, or modification of the fixture without prior written authorization from the manufacturer will render the warranty void.