

Horizontal Open Metal Halide Lamp: For Shallow Plenums

Features

Lamp

- Designed for : 100 watt coated ED-17 horizontal open burn.
- See Option -43 for lower wattage.
- Option -23 for Mercury, Option -24 for HPS.

Socket

- Horizontal. Pulse rated extended body for open fixture medium base lamps.
- Glazed porcelain.
- Nickel-plated brass screw shell. Silicone leads.

Reflector

- Self-flanged specular Alzak® aluminum.
- Optional colors and custom finishes available. See Options.

Ballast Assembly

- Whisper Pack™ fully encapsulated 180°C rated HPF ballast.
- Premium Class H high reactance with 5:12 regulation.
- Capacitor and ignitor supplied.
- 120 volt standard or see optional voltages.

- Cool, quiet, long-life. Silicone leads.
- Visible and easily serviced in all ceilings including dry wall.

Fuse

- Fused primary. Renewable. Aids servicing.

Housing

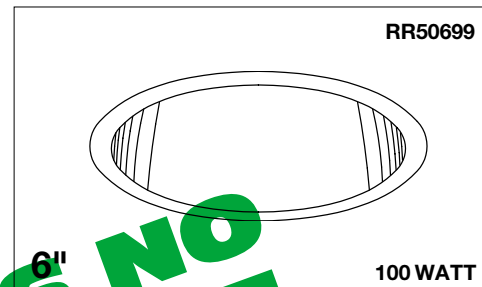
- Acrylic enameled aluminum.
- Cool: Dissipates heat across entire surface area. Vented.
- Rustproof: Exceeds 1000 hour ASTM 5% salt spray test.
- Entire luminaire serviced through removable reflector.
- Built-in plaster frame.

Outlet Box

- Prewired 14 GA (NEC) galvanized steel, UL listed.
- 1/2" and 3/4" knockouts.

Installation

- 27" hanger bars supplied (2).
- Fully adjustable universal mounting brackets supplied (2).



75% Efficiency!

THIS FIXTURE IS NO LONGER AVAILABLE FOR REPLACEMENT

- Reflector and socket bracket adjust as unit for ease of installation.
- Recesses indoor or outdoor in covered locations.

UL, C-UL (Canada) Listings

- Wet, damp or dry locations, covered ceilings.
- Through-branch circuit conductors (6 #12).

Three Year Limited Warranty

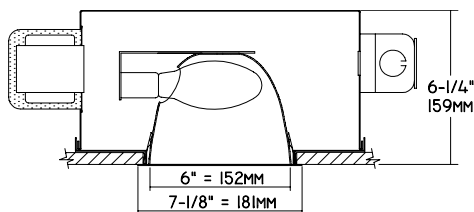
- Complete standard fixture.

Thermal Protection

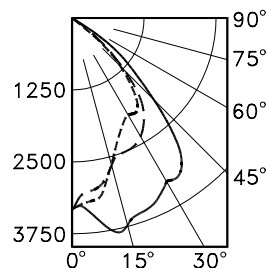
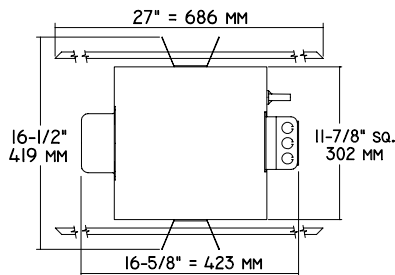
- Per current NEC.

Performance at a Glance

RR50699



Note: If outer envelope (glass bulb) of lamp is broken or punctured, power to the lamp should be immediately turned off and people should vacate the area to avoid ultraviolet radiation exposure, according to the lamp manufacturers.



RR50699

- 0° S/MH 0.9
- 90° S/MH 1.5
- 180° S/MH 1.1

Cone of Light*

Ft.	FC	Dia.
6	91.9	6.8
8	51.7	9.0
10	33.1	11.3
12	23.0	13.5
14	16.9	15.8
16	12.9	18.0

RR50699

Cone of Light Key

- Ft.** Distance from fixture
- FC** Footcandles (average)
- Dia.** Circle of light at 50% of FC

*Dia. (in ft.) shown is where FC value is half the FC at nadir.

THE KIRLIN COMPANY

3401 EAST JEFFERSON AVENUE • DETROIT, MICHIGAN 48207-4232
(313) 259-6400 • Fax: (313) 259-9409 OR (313) 259-3121

LAMP

MAXIMUM WATTAGE

CATALOG NUMBER

**HIGH EFFICIENCY
METAL HALIDE LIGHTING**

ED-17

100

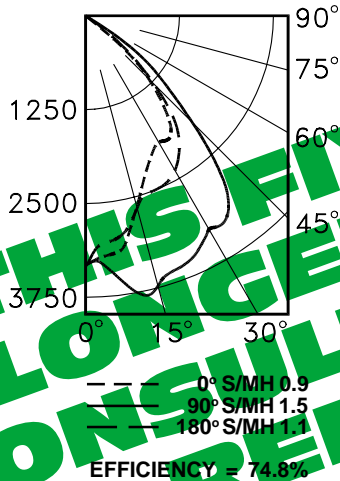
RR50699

THE KIRLIN COMPANY RESERVES THE RIGHT TO CHANGE, WITHOUT NOTICE, DETAILS OR SPECIFICATIONS IN PRODUCT DESIGN.

Detailed Photometry - Installed Fixture

FROM I.T.L. (BOULDER, CO) TEST NUMBER 44917

RR50699
 *LER = 44.1
 •AEC = \$5.45



Estimated Multipliers

- 16 Champagne Gold Alzak®: CP x .95
- 30 White: CP x .90
- OG Black OptiGroove: CP x .75

CANDLEPOWER DISTRIBUTION

	0.0	45.0	90.0	135.0	180.0
0	3308	3308	3308	3308	3308
5	3172	3245	3269	3172	3012
15	2665	3352	3724	3321	2672
25	2162	2901	3509	2620	2479
35	1987	3099	3335	2248	2078
45	12.7	1895	2060	1372	1320
55	362	645	691	399	396
65	11	2	13	10	9
75	4	2	2	2	2
85	0	0	0	0	0
90	0	0	0	0	0

COEFFICIENTS OF UTILIZATION

RF	70	50	30	50	30	10
1	84	82	70	77	77	74
2	79	74	70	67	70	68
3	73	67	63	59	64	61
4	68	61	56	52	59	55
5	64	56	51	47	54	49
6	59	51	46	42	49	45
7	56	47	42	38	45	41
8	52	43	38	34	42	37
9	49	40	35	31	39	34
10	46	37	32	28	36	32

THIS FIXTURE IS NO LONGER AVAILABLE FOR CONSULT FACTORY REPLACEMENT

Options

- 16 Champagne Gold anodized Alzak self-flanged reflector. (CP x .95)
- 23 Mercury ballast instead. 100 watt standard or see Option -43. Specify voltage.
- 24 HPS ballast instead. 100 watt standard or see Option -43. Specify voltage.
- 30 All white reflector, self-flanged. (CP x .90)
- 31 White reflector trim, self-flanged.
- 32 Trim extender. Broadens trim flange O.D. by 1" to cover larger ceiling opening.
- 43 Lower wattage medium base: specify voltage and wattage for: Metal Halide: 70, 50, 35;
- Mercury: 70, 50; HPS: 70, 50, 35.
- 45 Gasket above reflector flange. Stops dust streaks on ceiling.
- 58 277 volt 60 Hz. ballast instead.
- 79 Extension collar for up to 2" thick ceilings.
- 82 Sloped ceiling adapter. Specify slope up to 30° in 5° increments.
- 94 Custom color or SofTex finish self-flanged reflector. Consult factory.
- 97 Other voltage ballast. Consult factory.
- 98 347 volt 60 Hz. ballast instead. Consult factory for dimming or Q13 electronic.
- 99 Special modification. Consult factory.
- LP With open burn rated lamp. Specify source, wattage, color temperature, and clear or coated (3200°K standard for MH.) Consult factory for other color temperatures.
- OG OptiGroove black seamless tapered aluminum assembly. White trim, self-flanged. (CP x .75)

Note: If outer envelope (glass bulb) of lamp is broken or punctured, power to the lamp should be immediately turned off and people should vacate the area to avoid ultraviolet radiation exposure, according to the lamp manufacturers.

SUBMITTAL DATA

JOB NAME _____

TYPE _____

WATTAGE _____ VOLTAGE _____

CATALOG NUMBER _____

APPROVAL STAMP

LIMITED WARRANTY: CATALOGUED KIRLIN FIXTURES ARE WARRANTED FREE OF DEFECTS IN WORKMANSHIP OR MATERIAL FOR THREE YEARS FROM DATE OF PURCHASE. INSTALLED TO N.E.C. IN NORMAL USE. Manufacturer at this option will replace or repair such fixture or refund the purchase price on presentation of proof of purchase and defective fixture at the offices of manufacturer within three years of original shipment. Liability of manufacturer is limited to the foregoing, and manufacturer shall not be liable for any other damages, direct or indirect, sustained or suffered by purchaser or any person. This warranty is supplied to the buyer in place of all other warranties, expressed or implied. Seller does not warrant as to merchantability or fitness for a particular use, nor will any oral statement constitute a warranty or amend this specific warranty. Abnormal use, abuse of the fixture, improper installation, or modification of the fixture without prior written authorization from the manufacturer will render the warranty void.