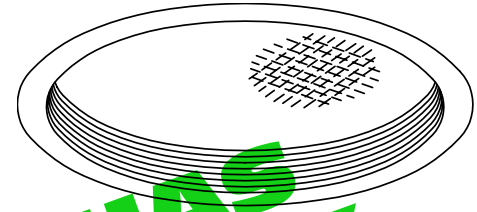


REGRESSED LENS: SOFFIT / CORRIDOR



Features

Lamp

- 70 watt clear E/ED-17.
- See Option -43 for optional lower wattage.
- Option -23 for Mercury, Option -24 for HPS.

Socket

- Vertical. Medium base. Pulse rated.
- Glazed porcelain.
- Nickel-plated brass screw shell. Silicone leads.

Reflector

- Specular Alzak® aluminum.

Trim Assembly

- Seamless tapered black OptiGroove with white flange.
- Self-flanged trim.
- UV absorbing tempered low brightness prismatic glass.
- Torsion springs retain snug fit to ceiling.

Ballast Assembly

- WhisperPack™ fully encapsulated 180°C rated HPF ballast.
- Premium Class H high reactance, 5:7 regulation.
- Capacitor and ignitor supplied.
- 120 volt standard or see optional voltages.
- Cool, quiet, long-life. Silicone leads.
- Visible and easily serviced in all ceilings including dry wall.

Fuse

- Fused primary. Renewable. Aids servicing.

Housing

- Acrylic enameled aluminum.
- Cool. Dissipates heat across entire surface area.
- Rustproof. Exceeds 1000 hour ASTM 5% salt spraytest.
- Entire luminaire serviced through removable trim assembly.
- Built-in plaster frame.

Outlet Box

- Prewired 14 GA (NEC) galvanized steel, UL listed.
- Removable insulated cover.
- 1/2" and 3/4" knockouts.

Installation

- 27" galvanized channel bar hangers supplied (2).
- Fully adjustable universal mounting brackets supplied (2).
- Recesses indoor or outdoor in covered locations.

UL Listing

- Wet, damp or dry locations, covered ceilings.
- Through-branch circuit conductors (6 #12).

Three Year Limited Warranty

- Complete standard fixture.

Thermal Protection

- Per current NEC.

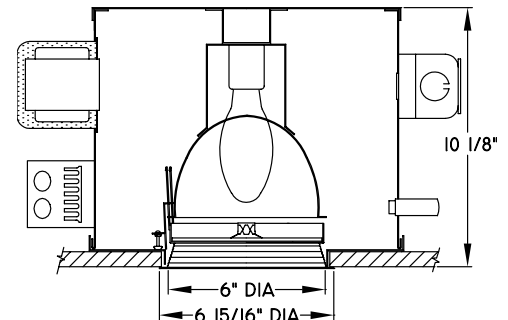
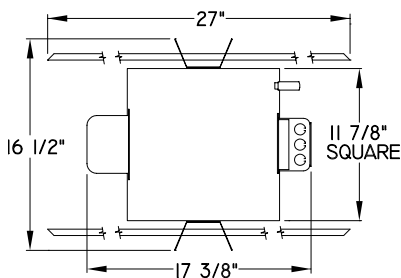
VOLTAGE
WATTAGE
TYPE
MODEL

DATA

SUBMITTAL

THIS FIXTURE HAS BEEN REPLACED BY HRR-060643 SOME DESIGN CHANGES MAY HAVE OCCURRED

APPROVAL STAMP



THE KIRLIN COMPANY

3401 EAST JEFFERSON AVENUE ■ DETROIT, MICHIGAN 48207-4232
(313) 259-6400 ■ FAX: (313) 259-9409 OR (313) 259-3121

**HIGH EFFICIENCY
METAL HALIDE LIGHTING**

LAMP
E/ED-17

WATTAGE
70

RR50619

JOB NAME
LOCATION

RR50619

KIRLIN RECESSED ROUND: 70 WATT MEDIUM BASE METAL HALIDE

Performance at a Glance - Installed Fixture

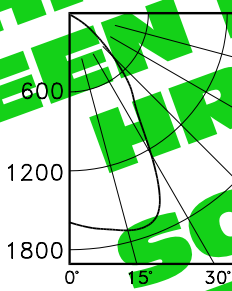
RR50619			Cones of Light			RR50619-FR		
Ft.	FC	DIA.	Ft.	FC	DIA.	Ft.	FC	DIA.
6	43.9	7.0	6	66.9	6.5	6	66.9	6.5
8	24.7	9.3	8	37.6	8.7	8	37.6	8.7
10	15.8	11.6	10	24.1	10.8	10	24.1	10.8
12	11.0	13.9	12	16.7	13.0	12	16.7	13.0
14	8.1	16.2	14	12.3	15.2	14	12.3	15.2
16	6.2	18.6	16	9.4	17.3	16	9.4	17.3

Cone of Light Key
Ft. Distance to surface from fixture (mounting height)
FC. Footcandles
DIA. Diameter (in feet) of the circle of light when FC value is half the FC at nadir.

Photometric Data - Installed Fixture

RR50619

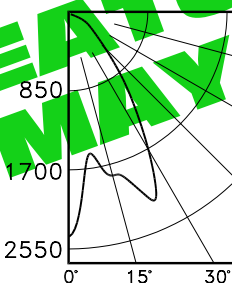
S/MH 1.1
EFF. = 47.2%



	0.0	22.5	45.0	67.5	90.0
0°	0	1582	1582	1582	1582
5°	5	1610	1610	1610	1610
15°	25	1740	1740	1740	1740
30°	35	1036	1036	1036	1036
45°	45	493	493	493	493
60°	55	204	204	204	204
75°	65	50	50	50	50
90°	85	6	6	6	6
90°	90	0	0	0	0

RR50619-FR

S/MH 1.0
EFF. = 55.6%



	0.0	22.5	45.0	67.5	90.0
0°	0	2407	2407	2407	2407
5°	15	1761	1761	1761	1761
15°	25	1866	1866	1866	1866
30°	35	2223	2223	2223	2223
45°	45	1216	1216	1216	1216
60°	55	583	583	583	583
75°	65	199	199	199	199
90°	75	40	40	40	40
90°	85	3	3	3	3
90°	90	0	0	0	0

COEFFICIENTS OF UTILIZATION

RF	20						
RC	70	50	30	10	50	30	10
1	53	52	50	49	49	48	47
2	50	47	45	43	45	43	42
3	47	43	40	38	41	39	37
4	44	39	36	34	38	35	33
5	41	36	33	31	35	32	30
6	38	33	30	28	32	30	27
7	36	31	28	25	30	27	25
8	34	29	25	23	28	25	23
9	32	27	23	21	26	23	21
10	30	25	22	20	24	22	20

RF	20						
RC	80			50			
RW	70	50	30	10	50	30	10
1	63	61	59	58	57	56	55
2	59	56	53	51	53	51	49
3	55	51	48	45	49	46	44
4	52	47	43	40	45	42	40
5	48	43	39	36	41	38	36
6	45	40	36	33	38	35	32
7	43	37	33	30	35	32	30
8	40	34	30	27	33	29	27
9	38	31	28	25	31	27	25
10	36	29	26	23	29	25	23

Options

- 23 Mercury ballast instead. 75 watt standard or see Option -43. Specify voltage.
- 24 HPS ballast instead. 70ME standard or see Option -43. Specify voltage.
- 29 White Son ballast instead. For ED-17 medium base lamp. 50 watt standard in 120 volt only. Consult factory for 277 volt.
- 40 White grooveless flare trim assembly instead.
- 43 Lower wattage medium base specify voltage and wattage for: Metal Halide: 50, 32 (GE Halarc™ electronic ballast); Mercury: 50; HPS: 50, 35.
- 45 Gasket above trim flange (between trim and housing).
- 46 Gasket between trim and lens.
- 49 Extra circuit DCB socket. (100 watt max.) Must not be energized simultaneously with main source.
- 58 277 volt 60 Hz. ballast instead.
- 65 Relay and DCB socket. (100 watt max.) With fixture energized, provides immediate light during HID outage. Also see Option -66.
- 66 Time delay relay and DCB socket. (100 watt max.) When energized, provides light until HID reaches 70% output.
- 82 Sloped ceiling adapter, white. Specify 5°, 10°, 15°, 20°, 25°, 30° slope.
- 94 Mounting hardware included.
- 94 Custom color trim assembly. Consult factory.
- 97 Other voltage ballasts. Consult factory.
- 99 Special modification. Consult factory.
- FR Fresnel tempered lens instead. Concentric prisms.
- LP With lamp. Specify source, wattage, color temperature, and clear or coated (3200°K standard for MH). Consult factory for other color temperatures.
- LS With tungsten halogen standby lamp. (100 watt max.) Use only with Options -49, -65 or -66.

THE KIRLIN COMPANY

3401 EAST JEFFERSON AVENUE ■ DETROIT, MICHIGAN 48207-4232
 (313) 259-6400 ■ FAX: (313) 259-9409 OR (313) 259-3121

RR50619

WATTAGE LAMP
 70 E/ED-17

HIGH EFFICIENCY METAL HALIDE LIGHTING

LIMITED WARRANTY: CATALOGUED KIRLIN FIXTURES ARE WARRANTIED FREE OF DEFECTS IN WORKMANSHIP OR MATERIAL FOR THREE YEARS FROM DATE OF PURCHASE. INSTALLLED TO N.E.C. IN NORMAL USE. Manufacturer at this option will replace or repair such fixture or refund the purchase price on presentation of proof of purchase and defective fixture at the offices of manufacturer within three years of original shipment. Liability of manufacturer is limited to the foregoing, and manufacturer shall not be liable for any other damages, direct or indirect, sustained or suffered by purchaser or any person. This warranty is supplied to the buyer in place of all other warranties, expressed or implied. Seller does not warrant as to merchantability or fitness for a particular use, nor will any oral statement constitute a warranty or amend this specific warranty. Abnormal use, abuse of the fixture, improper installation, or repair, or any other cause of damage shall void this warranty.