

PAR 30 Adjustable in a Small Aperture

Features

Lamp

- Designed for: 70 watt PAR 30L metal halide.
- 10° spot standard. As option, 40° medium flood beam spread available.
- See Option -43 for lower wattage.

Socket Assembly

- Swivels 360° and tilts up to 45°.
- Medium base, glazed porcelain socket.
- Nickel-plated brass screw shell. Silicone leads.

Reflector

- Self-flanged parabolic specular Alzak® aluminum.
- Eleven optional self-flanged colors and finishes available. See Options.

Ballast Assembly

- WhisperPack™ fully encapsulated 180°C rated HPF ballast.
- Premium Class H; High resistance 5:7 regulation.
- Capacitor and ignitor supplied.
- 120 volt standard or see optional voltages.
- Cool, quiet, long-life. Silicone leads.
- Visible and easily serviced in all ceilings including dry wall.

Fuse

- Fused primary. Renewable. Aids servicing.

Housing

- Acrylic enameled aluminum.
- Cool: Dissipates heat across entire surface area. Ventilated.
- Rustproof: Exceeds 1000 hour ASTM 5% salt spray test.
- Entire luminaire serviced through removable reflector.
- Built-in plaster frame.

Outlet Box

- Rewired 14-GA (NEC) galvanized steel, UL listed, with removable insulated cover.
- 1/2" and 3/4" knockouts.

Installation

- 27" galvanized hanger bars supplied (2).
- Fully adjustable universal mounting brackets supplied (2).
- Recesses indoor or outdoor in covered locations.

UL, C-UL (Canada) Listings

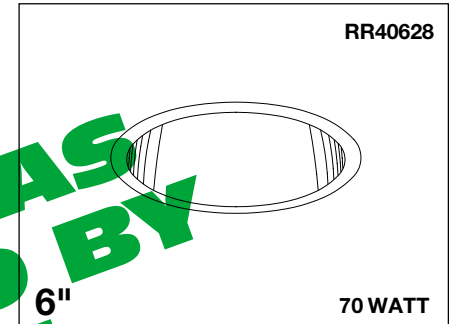
- Damp or dry locations, covered ceilings.
- Through-branch circuit conductors. (6 #12).

Three Year Limited Warranty

- Complete standard fixture.

Thermal Protection

- Per current NEC.



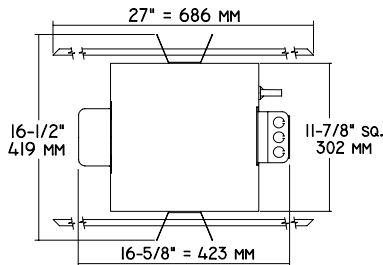
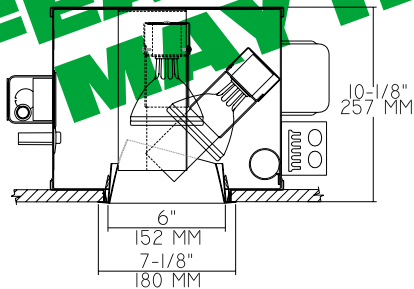
12 Reflector Finishes Available

360° Swivel with 45° Tilt

Ideal for Philips Master Color, Sylvania Metalarc or G.E. PAR 30L Lamp

Performance at a Glance

RR40628

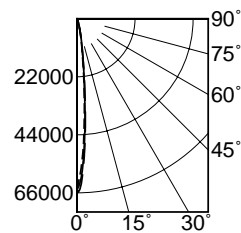


Cone of Light Key

- Ft.** Distance from fixture
- FC** Footcandles (average)
- Dia.** Circle of light at 50% of FC

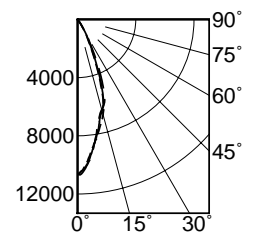
* Dia. (in ft.) shown is where FC value is half the FC at nadir.

(10° Spot Shown)



- 0° S/MH 0.2
- 90° S/MH 0.2
- 180° S/MH 0.2

(40° Medium Flood Shown)



- 0° S/MH 0.6
- 90° S/MH 0.6
- 180° S/MH 0.6

Cone of Light*

Ft.	FC	Dia.
6	1798.3	1.1
8	1011.5	1.5
10	647.4	1.8
12	449.6	2.2
14	330.3	2.6
16	252.9	2.9

Cone of Light*

Ft.	FC	Dia.
6	295.3	3.7
8	166.1	4.9
10	106.3	6.1
12	73.8	7.4
14	54.2	8.6
16	41.5	9.8

THE KIRLIN COMPANY

3401 EAST JEFFERSON AVENUE • DETROIT, MICHIGAN 48207-4232
(313) 259-6400 • Fax: (313) 259-9409 OR (313) 259-3121 • www.light-link.com/kirlin

LAMP

MAXIMUM WATTAGE

CATALOG NUMBER

HIGH EFFICIENCY
METAL HALIDE LIGHTING

PAR 30

70

RR40628

THE KIRLIN COMPANY RESERVES THE RIGHT TO CHANGE, WITHOUT NOTICE, DETAILS OR SPECIFICATIONS IN PRODUCT DESIGN.

Alzak® is a registered trademark of ALCOA.

