

PAR 30 Adjustable in a Small Aperture

Features

Lamp

- Designed for: 70 watt PAR 30 metal halide.
- 10° spot standard. As option, 40° medium flood beam spread available.
- See Option -43 for lower wattage.

Socket Assembly

- Swivels 360° and tilts up to 45°.
- Medium base, glazed porcelain socket.
- Nickel-plated brass screw shell. Silicone leads.

Reflector

- Self-flanged parabolic specular Alzak® aluminum.
- Eleven optional self-flanged colors and finishes available. See Options.

Ballast Assembly

- WhisperPack™ fully encapsulated 180°C rated HPF ballast.
- Premium Class H; High reactance 5:7 regulation.
- Capacitor and ignitor supplied.
- 120 volt standard or see optional voltages.
- Cool, quiet, long-life. Silicone leads.
- Visible and easily serviced in all ceilings including dry wall.

Fuse

- Fused primary. Renewable. Aids servicing.

Housing

- Acrylic enameled aluminum.
- Cool: Dissipates heat across entire surface area. Ventilated.
- Rustproof: Exceeds 1000 hour ASTM 5% salt spray test.
- Entire luminaire serviced through removable reflector.
- Built-in plaster frame.

Outlet Box

- Prewired 14 GA (NEC) galvanized steel, UL listed; with removable insulated cover.
- 1/2" and 3/4" knockouts.

Installation

- 27" galvanized hanger bars supplied (2).
- Fully adjustable universal mounting brackets supplied (2).
- Recesses indoor or outdoor in covered locations.

UL, C-UL (Canada) Listings

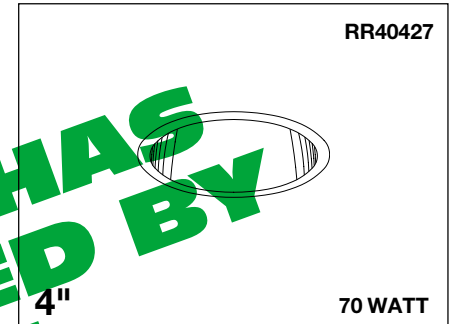
- Damp or dry locations, covered ceilings.
- Through-branch circuit conductors. (6 #12).

Three Year Limited Warranty

- Complete standard fixture.

Thermal Protection

- Per current NEC.



THIS FEATURE HAS BEEN REPLACED BY SOME OTHER DESIGN OR OPTIONS THAT MAY HAVE CHANGED

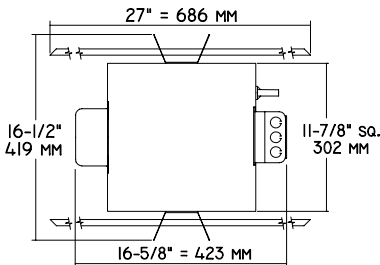
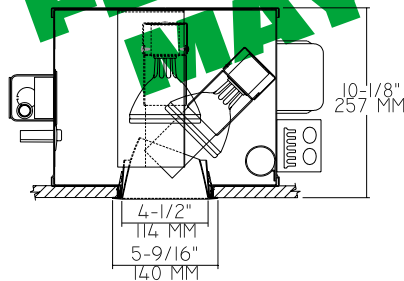
12 Reflector Finishes Available

360° Swivel with 45° Tilt

Ideal for Philips Master Color, Sylvania Metalarc or G.E. PAR 30 Lamp

Performance at a Glance

RR40427

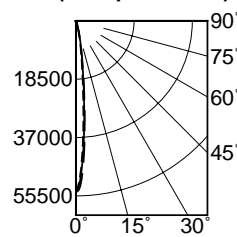


Cone of Light Key

- Ft.** Distance from fixture
- FC** Footcandles (average)
- Dia.** Circle of light at 50% of FC

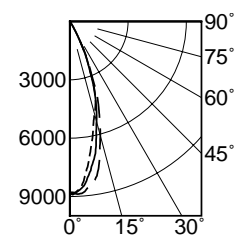
* Dia. (in ft.) shown is where FC value is half the FC at nadir.

(10° Spot Shown)



- 0° S/MH 0.2
- 90° S/MH 0.2
- 180° S/MH 0.2

(40° Medium Flood Shown)



- 0° S/MH 0.5
- 90° S/MH 0.6
- 180° S/MH 0.6

Cone of Light*

Ft.	FC	Dia.
6	1508.9	1.1
8	848.7	1.5
10	543.2	1.9
12	377.2	2.3
14	277.1	2.7
16	212.2	3.1

Cone of Light*

Ft.	FC	Dia.
6	246.0	3.5
8	138.4	4.7
10	88.6	5.9
12	61.5	7.0
14	45.2	8.2
16	34.6	9.4

THE KIRLIN COMPANY

3401 EAST JEFFERSON AVENUE • DETROIT, MICHIGAN 48207-4232
(313) 259-6400 • Fax: (313) 259-9409 OR (313) 259-3121 • www.light-link.com/kirlin

LAMP

MAXIMUM WATTAGE

CATALOG NUMBER

HIGH EFFICIENCY
METAL HALIDE LIGHTING

PAR 30

70

RR40427

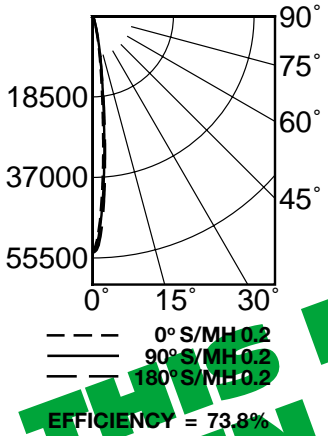
THE KIRLIN COMPANY RESERVES THE RIGHT TO CHANGE, WITHOUT NOTICE, DETAILS OR SPECIFICATIONS IN PRODUCT DESIGN.

Alzak® is a registered trademark of ALCOA.

Detailed Photometry - Installed Fixture

FROM I.T.L. (BOULDER, CO) RR40427 (SPOT: TEST No. 49886 (MFL): TEST No. 49892

RR40427 (10° SPOT)
 *LER = 39.8 •AEC = \$6.03



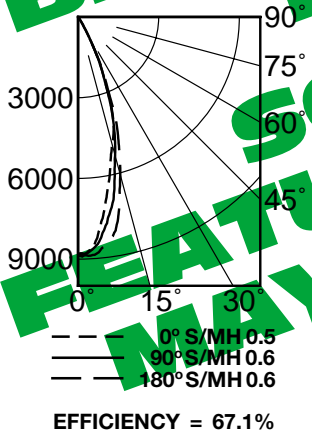
CANDLEPOWER DISTRIBUTION

	0.0	45.0	90.0	135.0	180.0
0	54319	54319	54319	54319	54319
5	27173	28614	30666	31768	32412
15	2794	3339	3481	3612	3623
25	240	437	731	698	524
35	65	65	76	55	44
45	0	0	0	0	0
55	0	0	0	0	0
65	0	0	0	0	0
75	0	0	0	0	0
85	0	0	0	0	0
95	0	0	0	0	0

COEFFICIENTS OF UTILIZATION

RF	20						
	80			50			
	70	50	30	10	50	30	10
1	85	84	83	82	80	79	78
2	83	81	79	78	78	76	75
3	81	78	76	75	76	74	73
4	80	76	74	72	74	72	71
5	78	74	72	70	73	71	69
6	76	73	70	69	71	69	68
7	75	71	69	67	70	68	67
8	74	70	68	66	69	67	66
9	72	69	66	65	68	66	65
10	71	68	65	64	67	65	64

RR40427 (40° MED FLOOD)
 *LER = 36.2 •AEC = \$6.63



CANDLEPOWER DISTRIBUTION

	0.0	45.0	90.0	135.0	180.0
0	8856	8856	8856	8856	8856
5	8288	8308	8470	8581	8783
15	4926	5078	5830	5764	6077
25	1918	1918	1938	2009	2080
35	81	71	91	111	121
45	0	0	0	0	0
55	0	0	0	0	0
65	0	0	0	0	0
75	0	0	0	0	0
85	0	0	0	0	0
90	0	0	0	0	0

COEFFICIENTS OF UTILIZATION

RF	20						
	80			50			
	70	50	30	10	50	30	10
1	77	75	74	73	71	70	70
2	74	72	69	68	68	67	65
3	72	68	66	64	66	64	62
4	69	65	62	60	63	61	59
5	67	62	59	57	61	58	56
6	64	60	57	55	59	56	54
7	62	58	54	52	56	54	52
8	60	55	52	50	54	52	50
9	58	53	50	48	53	50	48
10	57	52	49	47	51	48	46

Estimated Multipliers

- 16 Champagne Gold Alzak®: CP x .98
- 30 White: CP x .98
- 63 Dune Alzak: CP x .97
- 69 Wheat Alzak: CP x .97
- 70 Clear SofTex: CP x .98
- 71 Dune SofTex: CP x .95
- 72 Black Alzak: CP x .87
- 90 Champagne Gold SofTex: CP x .96
- 91 Wheat SofTex: CP x .95
- 93 Pewter Alzak: CP x .95
- OG OptiGroove: CP x .90

Options

- 16 Champagne Gold Alzak self-flanged reflector. (CP x .98)
- 30 All white self-flanged reflector. (CP x .98)
- 31 White flange (only) on self-flanged reflector.
- 32 Trim extender. Broadens trim flange O.D. by 1" to cover larger ceiling opening.
- 43 Lower wattage medium base - specify wattage and voltage: 39 watt PAR 20.
- 45 Gasket above reflector flange. Stops dust streaks on ceiling
- 58 277 volt 60 Hz. ballast instead.
- 63 Dune specular Alzak self-flanged reflector. (CP x .97)
- 69 Wheat specular Alzak self-flanged reflector. (CP x .97)
- 70 SofTex Clear softly etched self-flanged reflector. (CP x .98)
- 71 SofTex Dune softly etched self-flanged reflector. (CP x .95)
- 72 Black anodized Alzak self-flanged reflector. (CP x .87)
- 90 SofTex Champagne Gold softly etched self-flanged reflector. (CP x .96)
- 91 SofTex Wheat softly etched self-flanged reflector. (CP x .95)
- 93 Pewter anodized Alzak self-flanged reflector. (CP x .95)
- 94 Custom color self-flanged reflector. Consult factory.
- 97 Other voltage ballast. Consult factory.
- 99 Special modification. Consult factory.
- LP With 10° spot lamp. Specify wattage, beam spread, brand (Master Color, Metalarc, G.E.) and color temperature. Also available: 40° medium flood.
- OG OptiGroove black seamless tapered aluminum reflector. White trim, self-flanged. (CP x .90)

SUBMITTAL DATA

APPROVAL STAMP

JOB NAME _____

TYPE _____

WATTAGE _____ VOLTAGE _____

CATALOG NUMBER _____

LIMITED WARRANTY: CATALOGED KIRLIN FIXTURES ARE WARRANTED FREE OF DEFECTS IN WORKMANSHIP OR MATERIAL FOR THREE YEARS FROM DATE OF PURCHASE. INSTALLATION, ETC., IS NORMAL USE. Manufacturer at his option will replace or repair such fixture or refund the purchase price on presentation of proof of purchase and defective fixture at the offices of manufacturer within the first year of original shipment. Liability of manufacturer is limited to the foregoing, and manufacturer shall not be liable for any other damages, direct or indirect, sustained or suffered by purchaser or any person. This warranty is supplied on the understanding that other warranties, expressed or implied, shall not be construed to modify, impair, or contradict this warranty.