

Adjustable Eyeball for Highlighting and Sloped Ceiling Applications

Features

Lamp / Socket

- Designed for: 250 watt (max.) PAR 38 tungsten halogen lamp (by others).
- Rated 4200 hour life; 100 CRI.
- Dimmable (controls by others).
- Glazed porcelain medium base socket.

Trim Assembly

- Eyeball assembly. White finish standard.
- 360° rotation with 40° maximum tilt.
- White grooveless regressed flare trim.
- Also See Options -FT and -OG.

Housing

- Acrylic enameled 100% aluminum.
- Rustproof: Exceeds 1000 hour ASTM 5% salt spray test. For MRI version, see -MR.
- Cool: Dissipates heat across entire surface area.
- Entire luminaire visible and serviceable from below through removable trim assembly.
- Built-in plaster frame. Also see Option -79.

Outlet Box

- Prewired 14GA (NEC) galvanized steel. UL listed. With removable insulated cover.
- 1/2" and 3/4" knockouts.

Installation

- 27" galvanized hanger bars supplied (2).
- Fully adjustable universal galvanized mounting brackets supplied (2). Accepts 3/4" or 1-1/4" lathers channel or 1/2" T.S. conduit.
- Recesses indoor or outdoor in covered ceilings.

UL, C-UL (Canada) Listings

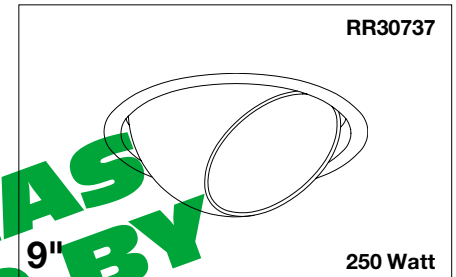
- Wet, damp or dry locations, covered ceilings.
- Through-branch circuit conductors (6 #12 AWG 90°C).

Three Year Limited Warranty

- Complete standard fixture.

Thermal Protection (Per Current NEC)

- Thermal protector included which provides automatic cut-off if rated temperature is exceeded. (Insulation related)



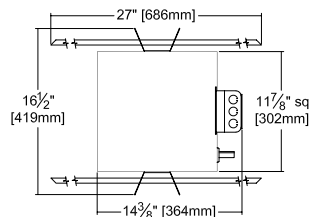
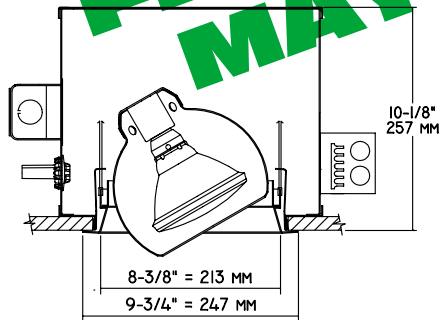
**Dimmable
Ideal Over Escalators**

**White Flat Trim Available
See Option -FT**

**Black Milligroove Trim Assembly
See Option -OG**

Performance at a Glance

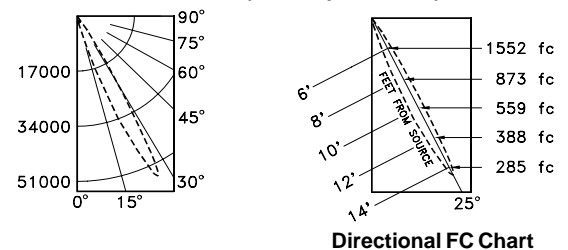
RR30937



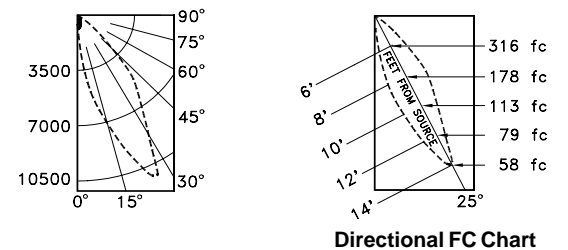
--- 0°
--- 90°
--- 180°

PHOTOMETRIC
DATA SHOWN
AT 25° TILT

RR30937 (250W Spot Shown)



RR30937 (250W Flood Shown)



THE KIRLIN COMPANY

3401 EAST JEFFERSON AVENUE • DETROIT, MICHIGAN 48207-4232
(313) 259-6400 • Fax: (313) 259-9409 OR (313) 259-3121

NEW MILLENNIUM

TUNGSTEN HALOGEN and
INCANDESCENT LIGHTING

LAMP

PAR 38

MAXIMUM WATTAGE

250

CATALOG NUMBER

RR30937

THE KIRLIN COMPANY RESERVES THE RIGHT TO CHANGE, WITHOUT NOTICE, DETAILS OR SPECIFICATIONS IN PRODUCT DESIGN.

Alzak® is a registered trademark of ALCOA.

RR30937 RECESSED ROUND: 250 WATT (MAX.) PAR 38 TUNGSTEN HALOGEN EYEBALL

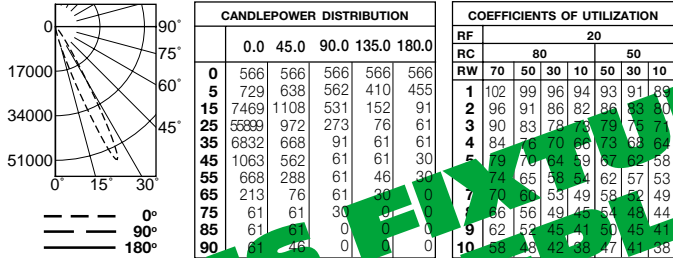
Detailed Photometry - Installed Fixture

FROM I.T.L. (BOULDER, CO)

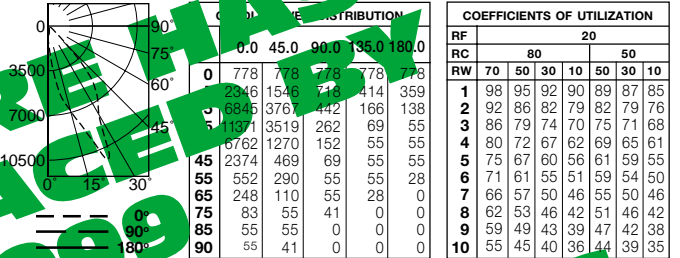
RR30937 (250W SP): TEST NUMBER 46962
RR30937 (120W SP): TEST NUMBER 46964

RR30937 (250W FL): TEST NUMBER 46961
RR30937 (120W FL): TEST NUMBER 46963

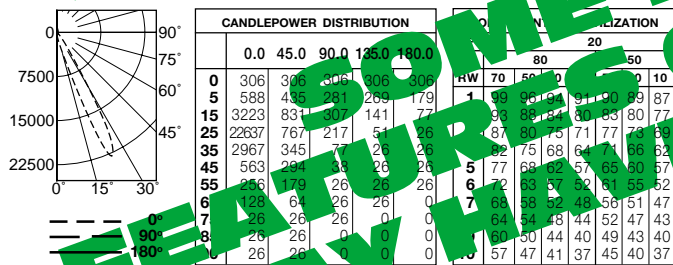
RR30937 250W SP Efficiency = 91.4%



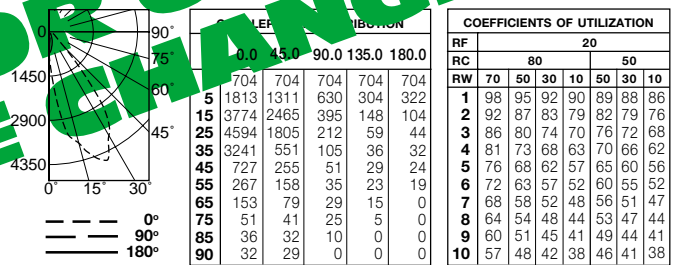
RR30937 250W FL Efficiency = 87.4%



RR30937 120W SP Efficiency = 88.7%



RR30937 120W FL Efficiency = 87.8%



Options

- 32 Trim extender. Broadens trim flange O.D. by 1" to cover larger ceiling opening.
- 58 277/120V stepdown transformer for 277 volt line input, prewired into fixture.
- 79 Extension collar for up to 2" thick ceilings.
- 94 Custom color / finish trim assembly. Consult factory.
- 99 Special modification. Consult factory.
- FT Flat trim instead. White finish.
- LP With PAR 38 lamp. Specify wattage, beam spread and color temperature.
- MR Converted to non-ferrous construction for MRI use.
- OG OptiGroove black seamless tapered trim assembly with white flange.

SUBMITTAL DATA

APPROVAL STAMP

JOB NAME _____

TYPE _____

WATTAGE _____ VOLTAGE _____

CATALOG NUMBER _____

THIS EXTRACT HAS BEEN RELEASED IRR-08099

FEATURES OR DESIGN MAY HAVE CHANGED

LIMITED WARRANTY: CATALOGUED KIRLIN FIXTURES ARE WARRANTED FREE OF DEFECTS IN WORKMANSHIP OR MATERIAL FOR THREE YEARS FROM DATE OF PURCHASE. INSTALL LED TON E.C. IN NORMAL USE. Manufacturer at his option will replace or repair such fixture or refund the purchase price on presentation of proof of purchase and defective fixture at the offices of manufacturer within the first year of original shipment. Liability of manufacturer is limited to the foregoing, and manufacturer shall not be liable for any other damages, direct or indirect, sustained or suffered by purchaser or any person. This warranty is supplied for the buyer's place of address. Warranties expressed or implied. Seller does not warrant as to merchantability or fitness for a particular use, nor liability of a manufacturer, installer, or user of the fixture without prior written authorization from the manufacturer. This order is the final offer.