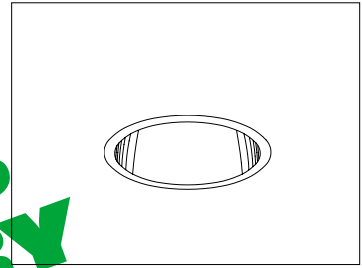


CATALOG #	TYPE	
JOB NAME	WATTAGE	VOLTAGE

7" T3 TUNGSTEN HALOGEN 350 WATT MAXIMUM RR30773

High Efficiency Open Appearance "HIR" Halogen Downlight



Features

Lamp

- Designed for horizontal T3 double-ended RSC "HIR" tungsten halogen lamp, 350 watt maximum (by others).

Socket

- Horizontal. Double ended RSC.
- Porcelain body. Silicone leads.

Reflectors

- Upper: Ellipsoidal specular Alzak® aluminum.
- Lower: Low brightness parabolic specular Alzak aluminum, self-flanged.
- Optional reflector finishes available.

Lens

- UV absorbing tempered Industrix glass mounted to upper reflector. Also see Options.
- Integral cut-off microswitch provided standard for relamping safety.

Housing

- Cool. Acrylic enameled 100% aluminum.
- Rustproof: Exceeds 1000 hour ASTM 5% salt spray test.
- Dissipates heat across entire surface area extending component life.

- Entire luminaire visible and serviceable from below through removable trim.
- For top access, see Option -TA.
- Built in plaster frame. Also see Option -79.

Outlet Box

- Prewired 14 GA (NEC) galvanized steel with removable insulated cover. UL listed.
- 1/2" and 3/4" knockouts.

Installation

- 27" galvanized hanger bars supplied (2).
 - Fully adjustable universal galvanized mounting brackets supplied (2).
 - Recesses indoor or outdoor in covered ceilings.
- UL, C-UL (Canada) Listings**
- Wet, damp or dry locations, covered ceilings.
 - Through-branch circuit conductors (up to 6 #12 AWG). Use supply wire suitable for at least 90°C.

Three Year Limited Warranty

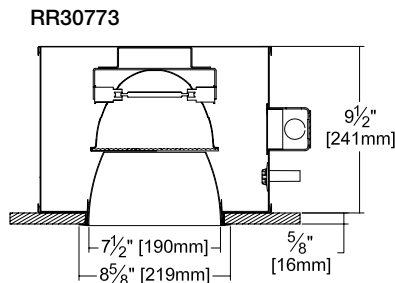
- Complete standard fixture.

Thermal Protection (Per Current NEC)

- Thermal protector included which provides automatic cut-off if rated temperature is exceeded. (Insulation related)

Recessed Round
Open
Appearance
Dual Reflector

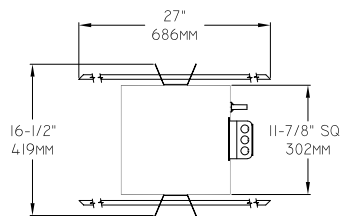
Performance at a Glance



Cone of Light Key

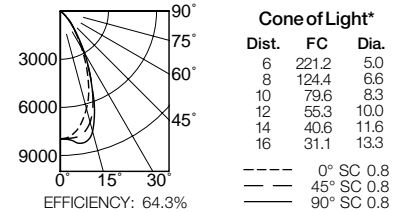
- Ft. Distance from fixture
- FC Footcandles at nadir (0°)
- Dia. Circle of light at 50% of FC

* Dia. (in ft.) shown is where FC value is half the FC at nadir.

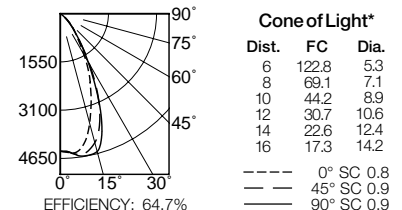


Ceiling Cut-out
8"

RR30773 (350 Watt)



RR30773 (225 Watt)



THE KIRLIN COMPANY

3401 EAST JEFFERSON AVENUE • DETROIT, MICHIGAN 48207-4232
(313) 259-6400 • Fax: (313) 259-9409 OR (313) 259-3121 • www.kirlinlighting.com

NEW MILLENNIUM TUNGSTEN HALOGEN
and INCANDESCENT LIGHTING

MAXIMUM WATTAGE

350

CATALOG NUMBER

RR30773

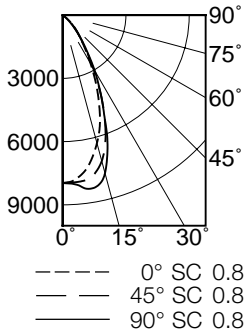
DUE TO OUR CONTINUING EFFORT TO IMPROVE PRODUCTS, TECHNICAL INFORMATION IS SUBJECT TO CHANGE WITHOUT NOTICE.

Alzak® is a registered trademark of ALCOA.

Detailed Photometry - Installed Fixture

Photometry from I.T.L., Boulder, CO

RR30773 (T3 350 Watt)



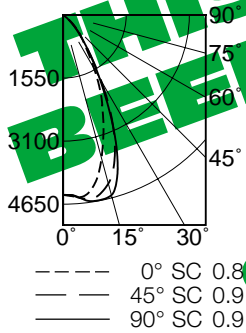
EFFICIENCY : 64.3%

CANDLEPOWER DISTRIBUTION					
	0.0	22.5	45.0	67.5	90.0
0	7963	7963	7963	7963	7963
5	7769	7835	7946	8059	8085
15	6286	6550	7166	7650	7763
25	3857	3982	4402	4668	4384
35	1722	1722	1784	1853	1884
45	724	712	681	633	588
55	62	58	51	46	41
65	3	3	3	3	3
75	2	1	1	1	2
85	0	0	0	0	0
90	0	0	0	0	0

COEFFICIENTS OF UTILIZATION							
RF	20						
	80			50			
RC	70	50	30	10	50	30	10
1	73	71	70	68	67	66	65
2	70	66	64	62	63	61	60
3	66	62	59	56	59	57	55
4	63	58	55	52	56	53	51
5	60	54	51	48	53	50	47
6	57	51	47	45	50	47	44
7	54	48	44	42	47	44	41
8	52	46	42	39	44	41	39
9	49	43	39	37	42	39	37
10	47	41	37	35	40	37	35

ITL TEST #58754

RR30773 (T3 225 Watt)



EFFICIENCY : 64.7%

CANDLEPOWER DISTRIBUTION					
	0.0	22.5	45.0	67.5	90.0
0	4420	4420	4420	4420	4420
5	4404	4498	4512	4515	4499
15	3643	3820	4289	4551	4584
25	2224	2330	2844	3029	2791
35	974	1000	1111	1107	1094
45	442	427	396	365	354
55	35	33	31	30	28
65	2	2	2	3	3
75	1	1	1	1	1
85	0	0	0	0	0
90	0	0	0	0	0

COEFFICIENTS OF UTILIZATION							
RF	20						
	80			50			
RC	70	50	30	10	50	30	10
1	73	72	70	69	68	68	66
2	70	67	64	62	64	62	60
3	66	62	59	57	60	57	55
4	63	58	55	52	56	53	51
5	60	55	51	48	53	50	48
6	57	51	48	45	50	47	44
7	54	48	45	42	47	44	42
8	52	46	42	39	45	41	39
9	49	43	39	37	42	39	37
10	47	41	37	35	40	37	35

ITL TEST #58755

Options

Wattage and Voltage

- 58 277/120 volt stepdown transformer for 277 volt line input, prewired into fixture; with 277 volt thermal protector.

Lenses and Trims

- 16 Champagne Gold specular Alzak lower cone. (CP x .95)
- 30 All white lower cone. (CP x .95)
- 31 White acrylic enameled lower cone flange.
- 32 White oversize trim extender. Specify size.
- 45 Gasket between ceiling and lower cone flange.
- 63 Dune specular Alzak lower cone. (CP x .93)
- 69 Wheat specular Alzak lower cone. (CP x .92)
- 70 SofTex clear lower cone. (CP x .92)
- 71 SofTex Dune lower cone. (CP x .89)
- 72 Black specular Alzak lower cone. (CP x .77)
- 77 SofTex Pewter lower cone. (CP x .85)
- 79 Extension collar for ceilings up to 2" thick.
- 90 SofTex Champagne Gold lower cone. (CP x .90)
- 91 SofTex Wheat lower cone. (CP x .88)
- 93 Pewter specular Alzak lower cone. (CP x .88)
- 94 Custom color/finish. Specify. Consult factory.

Other

- 99 Special modification. Consult factory.
- LP With PAR 38 lamp. Specify wattage, beam spread and color temperature.
- TA Top access; for servicing from above ceiling.

SUBMITTAL DATA

APPROVAL STAMP

JOB NAME

TYPE

WATTAGE

VOLTAGE

CATALOG NUMBER

LIMITED WARRANTY: CATALOGUED KIRLIN FIXTURES ARE WARRANTED FREE OF DEFECTS IN WORKMANSHIP OR MATERIAL FOR THREE YEARS FROM DATE OF PURCHASE. INSTALLER TO N.E.C. IN NORMAL USE. Manufacturer at his option will replace or repair such fixture or refund the purchase price on presentation of proof of purchase and defective fixture at the office of manufacturer within three years of original shipment. Liability of manufacturer is limited to the foregoing, and manufacturer shall not be liable for any other damages, direct or indirect, sustained or suffered by purchaser or any person. This warranty is supplied to the buyer in place of all other warranties, expressed or implied. Seller does not warrant as to merchantability or fitness for a particular use, nor will any oral statement constitute a warranty or amend this specific warranty. Abnormal use, abuse of the fixture, improper installation, or repair or modification of the fixture without prior written authorization from the manufacturer will render the warranty void.