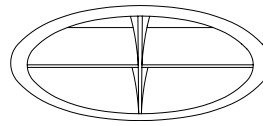


X-CELL™ Cross Baffle for PAR 38 Tungsten Halogen Lamp



250W PAR 38 7" RR30767

Features

Lamp/Socket

- Designed for vertical tungsten halogen lamp: 250 watt (max.) PAR 38 (by others).
- Rated 4200 hour life. 100 CRI.
- Dimmable (controls by others).
- Glazed porcelain medium base socket. Nickel plated brass screw shell. Silicone leads.

Reflectors

- Upper: Specular Alzak® aluminum
- Lower: Self-flanged SorTex aluminum 4-cell parabolic cross baffle

Housing

- Cool. Acrylic enameled 100% aluminum.
- Rustproof: Exceeds 1000 hour ASTM 5% salt spray test.
- Dissipates heat across entire surface area.
- Entire luminaire serviced through aperture.
- Built-in plaster frame.

Outlet Box

- Prewired 14 GA (NEC) galvanized steel, UL listed; with removable insulated cover.
- 1/2" and 3/4" knockouts.

Installation

- 27" hanger bars supplied (2).

- Fully adjustable universal mounting brackets supplied (2).
- Recesses indoor or outdoor in covered ceilings

UL, C-UL (Canada) Listings

- Wet, damp or dry locations, covered ceilings.
- Through-branch circuit conductors (up to 6 #12). Supply wire rating: 90°C.

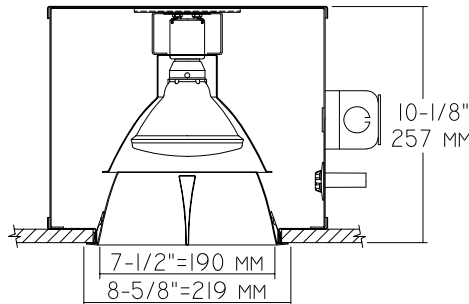
Three Year Limited Warranty

- Complete standard fixture.

Thermal Protection (Per Current NEC)

- Thermal protector included which provides automatic cut-off if rated temperature is exceeded. (Insulation related)

Dimensions - Installed Fixture



Options

Wattage and Voltage

- 58 277/120 volt stepdown transformer for 277 volt line input, prewired into each fixture; with 277 volt thermal protector.

Electrical and Lamps

- LP With lamp. Specify wattage, beam spread, style (PAR 38) and color temperature.

Reflectors and Trims (Self-Flanged)

- 30 White cross baffle assembly and flange.
- 31 White flange (only) on cross baffle reflector.
- 32 Trim extender. Broadens trim flange O.D. by 1" to cover larger ceiling opening.
- 45 Gasket above reflector flange.
- 62 Specular Clear Alzak® cross baffle assembly.
- 94 Custom color cross baffle assembly. Consult factory.
- WW Wall wash cross baffle assembly instead.

Other

- 99 Special modification. Consult factory.

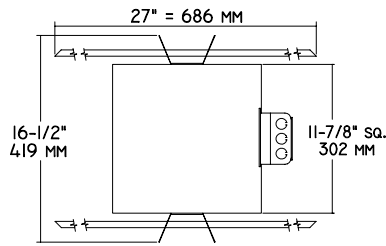
KIRLIN

THE KIRLIN COMPANY

3401 EAST JEFFERSON AVENUE • DETROIT, MICHIGAN 48207-4232
(313) 259-6400 • Fax: (313) 259-9409 or (313) 259-3121 • www.kirlinlighting.com

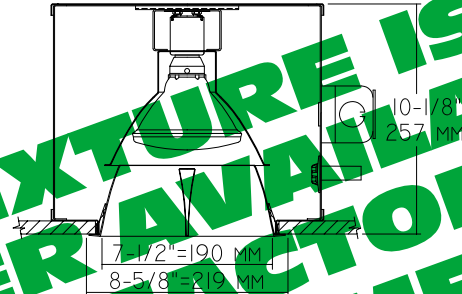
RR30767

Plan View



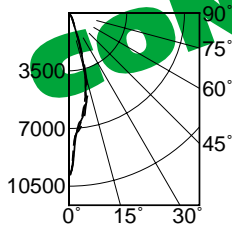
*** Cone of Light Key**
Dist. Distance from fixture
FC Footcandles (average)
Dia. Circle of light at 50% of FC
 Dia. (in ft.) shown is where FC value is half the FC at nadir.

C.U. (Coefficients of Utilization) Tables are available on request. Please contact your Kirlin representative.



THIS FIXTURE IS NO LONGER AVAILABLE FOR REPLACEMENT CONSULT FACTORY

RR30767 250W PAR 38 Flood



SC 0.4

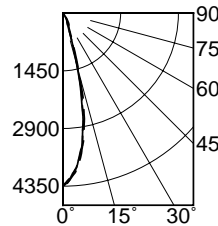
Cone of Light*

Ft.	FC	Dia.
6	271.9	2.5
8	152.9	3.3
10	97.9	4.1
12	68.0	5.0
14	49.9	5.8
16	38.2	6.6

EFFIC: 60.1%
ITL TEST #54820

	CANDLEPOWER DISTRIBUTION				
	0.0	22.5	45.0	67.5	90.0
0	9788	9788	9788	9788	9788
5	6951	6818	7113	7022	6761
15	3552	4026	4055	3941	3599
25	617	627	736	703	627
35	190	233	266	247	209
45	38	19	9	19	47
55	0	0	0	0	0
65	0	0	0	0	0
75	0	0	0	0	0
85	0	0	0	0	0
90	0	0	0	0	0

RR30767 120W PAR 38 Flood



SC 0.4

Cone of Light*

Ft.	FC	Dia.
6	120.5	2.6
8	67.8	3.5
10	43.4	4.4
12	30.1	5.3
14	22.1	6.2
16	16.9	7.0

EFFIC: 53.2%
ITL TEST #54821

	CANDLEPOWER DISTRIBUTION				
	0.0	22.5	45.0	67.5	90.0
0	4338	4338	4338	4338	4338
5	3894	3924	3947	3931	3904
15	1440	1585	1594	1561	1359
25	250	321	349	293	240
35	98	137	153	135	92
45	31	14	12	15	25
55	2	2	1	1	3
65	0	0	0	0	0
75	0	0	0	0	0
85	0	0	0	0	0
90	0	0	0	0	0

SUBMITTAL DATA

JOB NAME _____
 TYPE _____
 WATTAGE _____ VOLTAGE _____
 CATALOG NUMBER _____

APPROVAL STAMP

LIMITED WARRANTY: CATALOGED KIRLIN FIXTURES ARE WARRANTED FREE OF DEFECTS IN WORKMANSHIP OR MATERIAL FOR THREE YEARS FROM DATE OF PURCHASE. INSTALLATION IS NOT NORMAL USE. Manufacturer at this option will replace or repair such fixture or refund the purchase price on presentation of proof of purchase and defective fixture at the office of manufacturer within three years of original shipment. Liability of manufacturer shall not be liable for any other damages, direct or indirect, sustained or suffered by purchaser or any person. This warranty is supplied to the manufacturer and will render the warranty void. Seller does not warrant for the condition, quality or fitness for particular use, nor will any oral statement, consultation, warranty or amend this specific warranty. Additional use, abuse or the fixture, improper installation, or repair, or modification of the fixture without prior written authorization from the manufacturer will void the warranty.