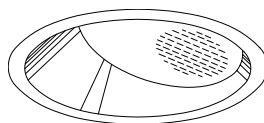


### 6" Lensed Wall Wash for PAR 38 Tungsten Halogen Lamp



250W PAR 38 6" RR30666

## Features

### Lamp/Socket

- Designed for offset tungsten halogen lamp; 250 watt (max.) PAR 38 (by others).
- Rated 4200 hour life, 100 CRI.
- Dimmable controls by others.
- Glazed porcelain medium base socket. Nickel plated brass screw shell. Silicone leads.

### Trim Assembly

- Clear specular Alzak® aluminum reflector.
- C#73 tempered prismatic glass lens.
- Optional lower reflector colors and finishes available, see Options.

### Housing

- Cool. Acrylic enameled 100% aluminum.
- Rustproof. Exceeds 1000 hour ASTM 5% salt spray test.
- Dissipates heat across entire surface area.
- Entire luminaire serviced through aperture.
- Built-in plaster frame.

### Outlet Box

- Prewired 14 GA (NEC) galvanized steel, UL listed; with removable insulated cover.
- 1/2" and 3/4" knockouts.

### Installation

- 27" hanger bars supplied (2).
- Fully adjustable universal galvanized

mounting brackets supplied (2).

- Recesses indoor or outdoor in covered ceilings.

### UL, C-UL (Canada) Listings

- Wet, damp or dry locations, covered ceilings.
- Through-branch circuit conductors (up to 6 #12). Supply wire rating: 90°C.

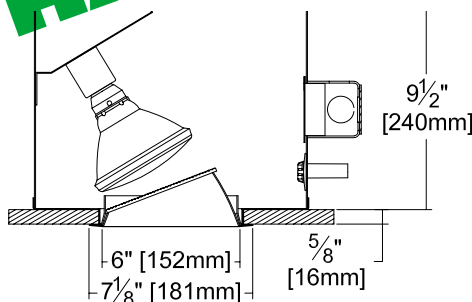
### Three Year Limited Warranty

- Complete standard fixture.

### Thermal Protection (Per Current NEC)

- Thermal protector included which provides automatic out-off if rated temperature is exceeded. (Insulation related)

## Dimensions - Installed Fixture



## Options

### Wattage and Voltage

- 58 277/120 volt stepdown transformer for 277 volt line input, prewired into each fixture; with 277 volt thermal protector.

### Electrical and Lamps

- LP With lamp. Specify wattage, beam spread, style (PAR 38) and color temperature.

### Reflectors and Trims (Self-Flanged)

- 16 Champagne Gold specular Alzak lower reflector. (CP x .98)
- 30 White self-flanged lower reflector. (CP x .98)
- 31 White flange (only) on lower reflector.
- 32 Trim extender. Broadens trim flange O.D. by 1" to cover larger ceiling opening.
- 45 Gasket between trim and ceiling.
- 63 Dune specular Alzak lower reflector. (CP x .97)
- 69 Wheat specular Alzak lower reflector. (CP x .97)
- 70 Softex Clear softly etched lower reflector. (CP x .98)
- 71 Softex Dune softly etched lower reflector. (CP x .95)

- 72 Black specular Alzak lower reflector. (CP x .87)
- 77 Softex Pewter softly etched lower reflector. (CP x .90)
- 90 Softex Champagne Gold softly etched lower reflector. (CP x .96)
- 91 Softex Wheat softly etched lower reflector. (CP x .95)
- 92 Umber specular Alzak lower reflector. (CP x .92)
- 93 Pewter specular Alzak lower reflector. (CP x .95)
- 94 Custom color trim assembly. Consult factory.

### Other Options

- 99 Special modification. Consult factory.

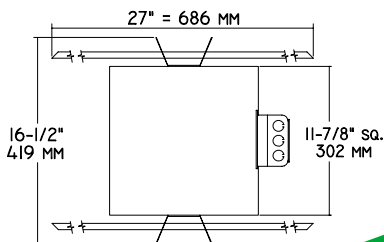
# KIRLIN

## THE KIRLIN COMPANY

3401 EAST JEFFERSON AVENUE • DETROIT, MICHIGAN 48207-4232  
(313) 259-6400 • Fax: (313) 259-9409 or (313) 259-3121 • www.kirlinlighting.com

### RR30666

Plan View

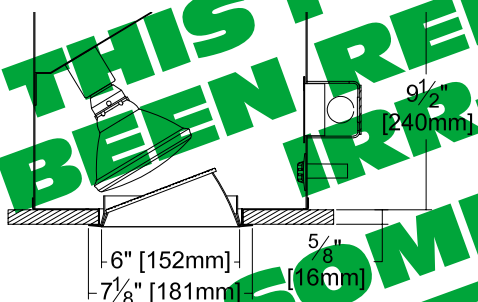


#### \* Cone of Light Key

- Dist.** Distance from fixture  
**FC** Footcandles (average)  
**Dia.** Circle of light at 50% of FC  
 Dia. (in ft.) shown is where FC value is half the FC at nadir.

C.U. (Coefficient of Utilization) Tables are available on request. Please contact your Kirlin representative.

### RR30666 250W PAR 38



EFFIC: 69.8%

ITL TEST #53132

DISTANCE FROM CEILING IN FEET	SINGLE FIXTURE				MULTIPLE FIXTURES			
	1'	2'	3'	4'	3' CENTERS	4' CENTERS	3' CENTERS	4' CENTERS
1	23.5	13.9	6.3	2.0	1.1	27.7	25.3	27.7
2	56.0	35.1	11.7	4.1	1.7	67.5	62.4	67.5
3	77.6	57.2	28.9	8.6	3.0	96.1	92.0	96.1
4	77.3	62.2	37.6	15.4	4.8	102.2	99.9	102.0
5	57.0	48.6	32.5	16.9	6.7	89.8	89.3	89.8
6	39.9	35.7	26.6	15.5	7.6	70.3	70.8	70.3
7	27.9	25.5	20.8	13.6	7.5	55.9	56.6	55.9
8	19.7	18.5	15.5	11.4	6.9	45.5	45.7	45.5
9	14.6	13.8	12.1	9.3	6.3	38.2	38.1	38.2

	0.0	45.0	90.0	135.0	180.0
0	1710	1710	1710	1710	1710
5	2302	2092	1627	1221	1121
15	3312	2463	1149	553	445
25	3920	2288	563	245	199
35	3861	1651	201	103	96
45	2797	726	66	29	22
55	1338	199	18	5	4
65	421	40	5	1	0
75	35	6	0	0	0
85	0	0	0	0	0
90	0	0	0	0	0

SUBMITTAL DATA

APPROVAL STAMP

JOB NAME \_\_\_\_\_

TYPE \_\_\_\_\_

WATTAGE \_\_\_\_\_ VOLTAGE \_\_\_\_\_

CATALOG NUMBER \_\_\_\_\_

LIMITED WARRANTY: CATALOGED KIRLIN FIXTURES ARE WARRANTED FREE OF DEFECTS IN WORKMANSHIP OR MATERIAL FOR THREE YEARS FROM DATE OF PURCHASE. INSTALLATION TO N.E.C. IN NORMAL USE. Manufacturer at the option will replace or repair such fixture or refund the purchase price on presentation of proof of purchase and defective fixture at the office of manufacturer within three years of original shipment. Liability of manufacturer shall not be liable for any other damages, direct or indirect, sustained or suffered by purchaser or any person. The warranty is supplied to the manufacturer will render the warranty void.

TH / INCAND  
 DECEMBER 2002