

### Sleek Lensed Wall Wash for Shallow Plenums

#### Features

##### Lamp / Socket

- Designed for: Offset 150 watt (max.) A-21 inside frosted incandescent lamp (by others).
- Dimmable (controls by others).
- Glazed porcelain medium base socket.

##### Trim Assembly

- Specular Alzak® aluminum upper reflector.
- Self-flanged specular Alzak aluminum lower reflector.
- Twelve optional self-flanged lower reflector colors and finishes available. See Options.
- C#73 tempered prismatic glass lens.
- Assembly retained by torsion springs; snug fit to ceiling.

##### Housing

- Acrylic enameled 100% aluminum.
- Rustproof: Exceeds 1000 hour ASTM 5% salt spray test.
- Cool: Dissipates heat across entire surface area.
- Entire luminaire visible and serviceable from below through removable trim assembly and reflector.

- Built-in plaster frame. Also see Option -79.

##### Outlet Box

- Prewired 14GA (NEC) galvanized steel. UL listed. With removable insulated cover.
- 1/2" and 3/4" knockouts.

##### Installation

- 27" galvanized hanger bars supplied (2).
- Fully adjustable universal galvanized mounting brackets supplied (2). Accepts 3/4" or 1-1/4" fathens channel or 1/2" T.S. conduit.
- Recesses indoor or outdoor in covered ceilings.

##### UL, C-UL (Canada) Listings

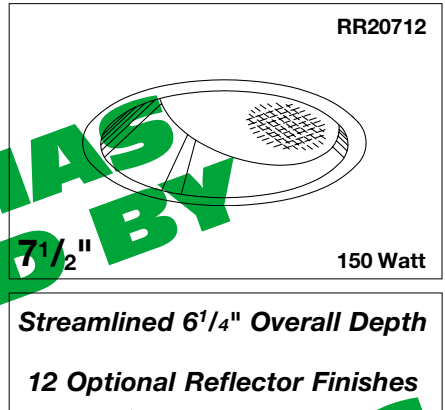
- Wet, damp or dry locations, covered ceilings.
- Through-branch circuit conductors (6 #12 AWG 90°C).

##### Three Year Limited Warranty

- Complete standard fixture.

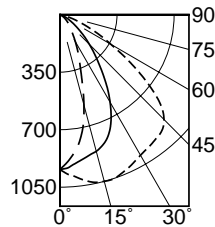
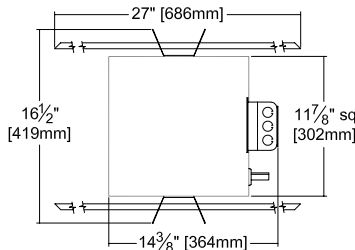
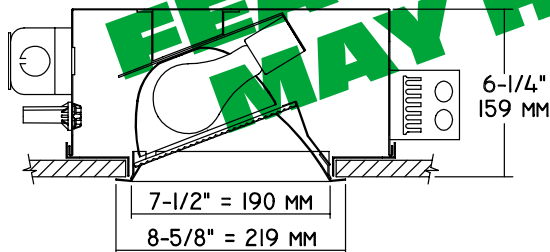
##### Thermal Protection (Per Current NEC)

- Thermal protector included which provides automatic cut-off if rated temperature is exceeded. (Insulation related)



#### Performance at a Glance

RR20712



WALL >

--- 0°  
 ——— 90°  
 - - - 180°

DISTANCE FROM CEILING IN FEET	SINGLE FIXTURE				MULTIPLE FIXTURES						
	1'	2'	3'	4'	3' CENTERS		4' CENTERS				
	FIXTURE INSTALLED 3' FROM WALL Footcandle Distribution on Wall Surface										
1	10.0	7.3	4.0	2.5	1.9	17.9	15.9	17.9	15.5	11.4	15.5
2	30.8	23.4	11.4	5.0	2.7	44.0	40.0	44.0	38.1	26.4	38.1
3	33.3	29.4	18.1	8.6	4.1	54.2	56.5	54.2	43.7	40.4	43.7
4	22.0	20.9	16.5	10.4	5.4	47.4	48.6	47.4	35.4	38.1	35.4
5	14.6	13.9	12.2	9.4	5.9	38.8	38.1	38.8	29.0	30.2	29.0
6	10.2	9.7	8.8	7.5	5.5	31.0	30.4	31.0	24.1	23.9	24.1
7	7.5	7.1	6.6	5.9	4.7	25.2	25.0	25.5	20.0	19.7	20.0
8	5.8	5.6	5.2	4.7	4.0	21.2	21.1	21.2	17.1	16.8	17.1
9	4.7	4.6	4.3	4.0	3.6	18.5	18.6	18.5	15.1	15.1	15.1

## THE KIRLIN COMPANY

3401 EAST JEFFERSON AVENUE • DETROIT, MICHIGAN 48207-4232  
 (313) 259-6400 • Fax: (313) 259-9409 OR (313) 259-3121

#### NEW MILLENNIUM

#### TUNGSTEN HALOGEN and INCANDESCENT LIGHTING

LAMP

A-21

MAXIMUM WATTAGE

150

CATALOG NUMBER

RR20712

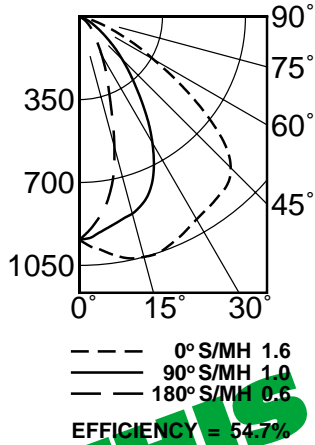
THE KIRLIN COMPANY RESERVES THE RIGHT TO CHANGE, WITHOUT NOTICE, DETAILS OR SPECIFICATIONS IN PRODUCT DESIGN.

Alzak® is a registered trademark of ALCOA.

### Detailed Photometry - Installed Fixture

FROM I.T.L. (BOULDER, CO) RR20712 (150W): TEST # 46986  
RR20712 (100W): TEST # 46987

#### RR20712 150W



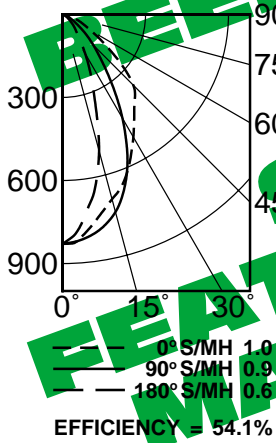
#### CANDLEPOWER DISTRIBUTION

	0.0	45.0	90.0	135.0	180.0
0	942	942	942	942	942
5	986	967	917	874	862
15	1050	976	861	671	569
25	1018	968	737	387	269
35	969	948	478	200	129
45	902	740	255	93	70
55	561	371	114	48	32
65	220	133	43	12	0
75	51	31	7	1	0
85	3	3	3	1	0
90	0	0	0	0	0

#### COEFFICIENTS OF UTILIZATION

RF	20						
	80			50			
RC	70	50	30	10	50	30	10
RW	70	50	30	10	50	30	10
1	61	59	57	56	56	54	53
2	57	53	50	48	50	48	46
3	53	48	44	41	46	43	40
4	49	43	39	36	41	38	36
5	45	39	35	32	38	34	32
6	42	36	32	29	35	31	28
7	40	33	29	26	32	28	26
8	37	30	26	23	29	26	23
9	35	28	24	21	27	24	21
10	33	26	22	20	25	22	20

#### RR20712 100W



#### CANDLEPOWER DISTRIBUTION

	0.0	45.0	90.0	135.0	180.0
0	829	829	829	829	829
5	805	819	816	785	763
15	691	781	739	575	510
25	579	618	554	310	242
35	452	532	316	151	105
45	362	334	158	62	53
55	184	148	67	33	23
65	81	61	27	7	0
75	27	18	3	0	0
85	7	0	0	0	0
90	0	0	0	0	0

#### COEFFICIENTS OF UTILIZATION

RF	20						
	80			50			
RC	70	50	30	10	50	30	10
RW	70	50	30	10	50	30	10
1	61	59	57	56	55	54	53
2	57	54	51	49	51	49	47
3	53	49	46	43	47	44	42
4	50	45	41	38	43	40	38
5	47	41	37	34	39	36	34
6	44	38	34	31	37	33	31
7	41	35	31	29	34	31	28
8	39	33	29	26	32	28	26
9	37	30	27	24	30	26	24
10	35	29	25	23	28	25	22

#### Estimated Multipliers

- 16 Champagne Gold Alzak®: CP x .95
- 30 White: CP x .95
- 63 Dune Alzak: CP x .93
- 68 Matte Black: CP x .77
- 69 Wheat Alzak: CP x .92

- 70 SofTex Clear: CP x .92
- 71 SofTex Dune: CP x .89
- 72 Black Alzak: CP x .77
- 90 SofTex Champagne Gold: CP x .90
- 91 SofTex Wheat: CP x .88
- 93 Pewter Alzak: CP x .88

### Options

- 16 Champagne Gold specular Alzak self-flanged lower reflector. (CP x .95)
- 30 All white lower reflector, self-flanged. (CP x .95)
- 31 White flange (only) on self-flanged lower reflector.
- 32 Trim extender. Broadens trim flange O.D. by 1" to cover larger ceiling opening.
- 45 Gasket above lower reflector flange. Stops dust streaks on ceiling.
- 58 277/120V stepdown transformer for 277 volt
- 63 Dune specular Alzak self-flanged lower reflector. (CP x .93)
- 68 Matte Black self-flanged lower reflector. White trim. (CP x .77)
- 69 Wheat specular Alzak self-flanged lower reflector. (CP x .92)
- 70 SofTex Clear softly etched self-flanged lower reflector. Resists smudges. (CP x .92)
- 71 SofTex Dune softly etched self-flanged lower reflector. Resists smudges. (CP x .89)
- 72 Black specular Alzak self-flanged lower reflector. (CP x .77)
- 79 Extension collar for up to 2" thick ceilings.
- 90 SofTex Champagne Gold softly etched self-flanged lower reflector. Resists smudges. (CP x .90)
- 91 SofTex Wheat softly etched self-flanged lower reflector. Resists smudges. (CP x .88)
- 93 Pewter specular Alzak self-flanged lower reflector. (CP x .88)
- 94 Custom color/finish lower reflector. Consult factory.
- 99 Special modification. Consult factory.

### SUBMITTAL DATA

JOB NAME \_\_\_\_\_  
TYPE \_\_\_\_\_  
WATTAGE \_\_\_\_\_ VOLTAGE \_\_\_\_\_  
CATALOG NUMBER \_\_\_\_\_

### APPROVAL STAMP

LIMITED WARRANTY: CATALOGUED KIRLIN FIXTURES ARE WARRANTED FREE OF DEFECTS IN WORKMANSHIP OR MATERIAL FOR THREE YEARS FROM DATE OF PURCHASE. INSTALLATION, ETC., IS NORMAL USE. Manufacturer at his option will replace or repair such fixture or refund the purchase price on presentation of proof of purchase and defective fixture at the office of manufacturer within the first year of original shipment. Liability of manufacturer is limited to the foregoing, and manufacturer shall not be liable for any other damages, direct or indirect, sustained or suffered by purchaser or any person. This warranty is supplied for the fixture placed at other than the office of manufacturer, expressed or implied. Seller does not warrant as to merchantability or fitness for a particular use, nor liability or statement constitute a warranty or amend this specific warranty. Abandonment of the fixture without prior written authorization from the manufacturer will void this warranty void.