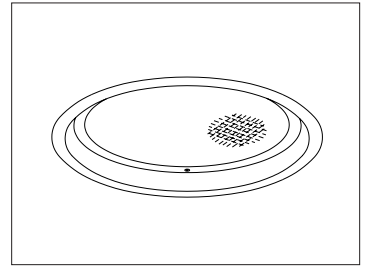


CATALOG #	TYPE	
JOB NAME	WATTAGE	VOLTAGE

12" 2 Triple 42 WATT MAXIMUM

RR01295

Sealed & Gasketed "IP65 Rated" Downlight for OR, Cath Lab Hospitals • Urgent Care • Skilled Nursing



Specifications

Lamp

- Designed for two 4-pin triple tube amalgam or quad compact fluorescent lamps: 2-42/32/26W triple or 26W quad.

Ballast: Multi-Wattage/Voltage

- Installed electronic high power factor, thermally protected. For lower wattages see Option -43. For dimming see Option -39.
- Single circuit wiring or see Option -84.
- 120-277 multi-volt; 50-60 Hz. THD <10%.
- ClickQuick connectors for fast servicing.
- Cold weather -22°F (-30°C).
- End of lamp life protection circuit. RFI filter.
- Internally fused. Also see Options -FS, -FD.

Reflector

- Specular Alzak® aluminum.

Trim / Lens Assembly

- Rustproof 100% aluminum grooveless, smooth, self-flanged white trim.

- C#73 tempered prismatic glass spread lens. See Option -GE for green acrylic filter.

5X Sealed and Gasketed

- (1) Silicone seal between trim and lens seals lens to trim, (2) closed cell gasketing between trim and housing flange seals trim to housing, (3) closed cell gasketing on trim flange seals flange to ceiling (4) closed cell gasketing on bottom pan seals housing to ceiling and (5) neoprene O-rings on stainless steel fasteners seal fasteners to trim.

Aluminum Housing

- Acrylic enameled. Rustproof: Exceeds 1000 hour ASTM 5% salt spray test.
- Lightweight: Minimizes ceiling load.
- Cool operation: Extends component life and reduces air conditioning load.
- Entire luminaire serviced through aperture.
- Built-in plaster frame (housing flange).

Outlet Box

- UL listed, prewired 14 GA (NEC) galvanized steel with removable insulated cover.
- 1/2" and 3/4" knockouts.

Installation

- 27" galvanized hanger bars with adjustable mounting brackets (2) supplied.
- Recesses indoor or outdoor in covered locations.

UL C-UL (Canada) Listings

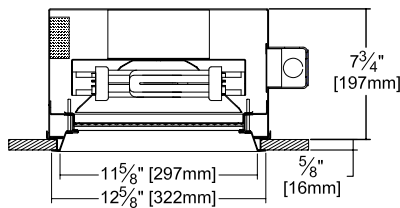
- Wet, damp or dry locations, covered ceilings.
- Through-branch conductors (6 #12).

Three Year Limited Warranty

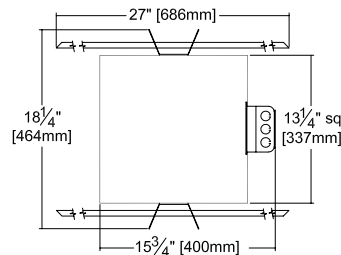
- Complete standard fixture and ballast.

Performance at a Glance

RR01295



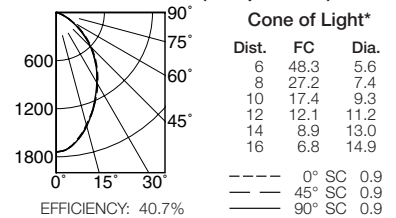
Ceiling Cut-out
12 1/4" Dia.



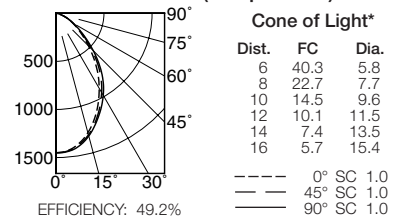
Cone of Light Key
Ft. Distance from fixture
FC Footcandles at nadir (0°)
Dia. Circle of light at 50% of FC

* Dia. (in ft.) shown is where FC value is half the FC at nadir.

RR01295 (2 Triple 42W)



RR01295 (2 Triple 32W)



THE KIRLIN COMPANY

3401 EAST JEFFERSON AVENUE • DETROIT, MICHIGAN 48207-4232
(313) 259-6400 • Fax: (313) 259-9409 OR (313) 259-3121 • www.kirlinlighting.com

PATIENT EXAM &
HEALTHCARE LIGHTING

MAXIMUM WATTAGE

2 Triple 42

CATALOG NUMBER

RR01295

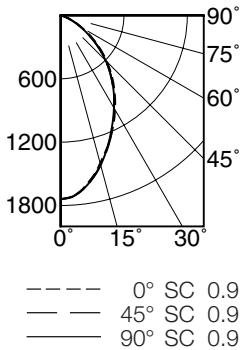
DUE TO OUR CONTINUING EFFORT TO IMPROVE PRODUCTS, TECHNICAL INFORMATION IS SUBJECT TO CHANGE WITHOUT NOTICE.

Alzak® is a registered trademark of ALCOA.

Detailed Photometry - Installed Fixture

Photometry from I.T.L., Boulder, CO

RR01295 (2 Triple 42)



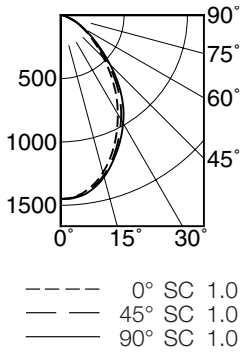
EFFICIENCY : 40.7%

CANDLEPOWER DISTRIBUTION					
	0.0	22.5	45.0	67.5	90.0
0	1740	1740	1740	1740	1740
5	1699	1699	1701	1704	1704
15	1448	1458	1466	1466	1467
25	1171	1173	1166	1160	1154
35	893	884	874	873	876
45	621	614	604	302	603
55	356	352	342	330	329
65	141	141	138	131	129
75	26	27	27	28	29
85	0	0	0	0	0
90	0	0	0	0	0

COEFFICIENTS OF UTILIZATION							
RF	20						
	80				50		
RC	70	50	30	10	50	30	10
RW							
1	45	44	43	41	41	40	39
2	42	40	37	36	37	36	34
3	39	36	33	31	34	32	30
4	36	32	29	27	31	29	27
5	34	29	26	24	28	26	24
6	32	27	24	22	26	23	21
7	30	25	22	20	24	21	19
8	28	23	20	18	22	20	18
9	26	21	18	16	21	18	16
10	25	20	17	15	19	17	15

ITL TEST #59121 *LER=25.0 •AEC=\$9.58

RR01295 (2 Triple 32)



EFFICIENCY : 49.2%

CANDLEPOWER DISTRIBUTION					
	0.0	22.5	45.0	67.5	90.0
0	1450	1450	1450	1450	1450
5	1432	1432	1436	1441	1442
15	1285	1292	1308	1318	1321
25	1039	1054	1079	1097	1104
35	761	781	817	846	855
45	480	491	519	542	550
55	275	275	292	292	298
65	139	141	144	144	145
75	39	41	44	46	48
85	5	6	6	6	6
90	0	0	0	0	0

COEFFICIENTS OF UTILIZATION							
RF	20						
	80				50		
RC	70	50	30	10	50	30	10
RW							
1	55	53	51	50	50	49	47
2	51	48	45	43	45	43	41
3	47	43	40	37	41	38	36
4	44	39	35	32	37	34	32
5	41	35	32	29	34	31	28
6	38	32	29	26	31	28	26
7	36	30	26	23	29	25	23
8	33	27	24	21	27	23	21
9	31	25	22	19	25	22	19
10	30	24	20	18	23	20	18

ITL TEST #42385 *LER=30.1 •AEC=\$7.97

* LER = Luminaires Efficiency Rating
LER = Luminaire Effic. x Total Lamp Lumens x Ballast Factor
Input Watts

• AEC = Annual Energy Cost per 1000 lumens
(based on 3000 hours use @ \$0.08 kWh).

Options

Ballast, Wattage and Voltage

- 39 Installed electronic dimming ballast. Indoor use. 10°C (50°F) minimum start. Specify wattage, voltage and brand.
- 43 Lower wattage. For 4-pin 18W triple or 18-13W quad. Specify wattage.
- 84 Wired for two circuits. Also see -FD.
- 97 Specify other voltage. Consult factory.
- 98 347 volt, 50/60 Hz. input. Consult factory.

Emergency Ballast - Specify Voltage¹

- Internal (factory installed) ballast, test switch and indicator light. Suitable for damp locations from 0° to 50°C (32° to 122°F) or with Cold Weather version (see -CE) -20° to 55°C (-4° to 131°F).
- 73 Internal 1-lamp EM ballast.
- CE Internal cold weather (-20° to 55°C) 1-lamp EM ballast. Specify voltage.
- HE¹ Internal higher lumen (up to 1250) 1-lamp EM ballast. 13-42W only. Specify voltage.

Lenses and Trims

- 94 Custom color/finish. Specify. Consult factory.
- GE Green acrylic filter mounted in lens assembly.
- UV UV filter. Consult factory.

Other

- 99 Special modification. Consult factory.
- FD Two additional in-line fuses. One per ballast. Use with Option -84. Not available with Option -98(347V).
- FS Additional in-line fuse. Not available with Option -98(347V).
- LE With 4-pin electronic lamps. 3500°K standard. 82 CRI and 12,000 hour life. Specify wattage, style and color temperature.

¹ Visit www.kirlinlighting.com for most current performance/specifications.

SUBMITTAL DATA

APPROVAL STAMP

JOB NAME _____
TYPE _____
WATTAGE _____ VOLTAGE _____
CATALOG NUMBER _____

LIMITED WARRANTY: CATALOGED KIRLIN FIXTURES ARE WARRANTED FREE OF DEFECTS IN WORKMANSHIP OR MATERIAL FOR THREE YEARS FROM DATE OF PURCHASE. INSTALLLED TO N.E.C. IN NORMAL USE. Manufacturer at its option will replace or repair each fixture or refund the purchase price on presentation of proof of purchase and defective fixture at the offices of manufacturer within three years of original shipment. Liability of manufacturer is limited to the foregoing, and manufacturer shall not be liable for any other damages, direct or indirect, sustained or suffered by purchaser or any person. This warranty is supplied in place of all other warranties, expressed or implied. Seller does not warrant as to merchantability or fitness for a particular use, nor will any oral statement constitute a warranty or amend this specific warranty. Abnormal use, abuse of the fixture, improper installation, or repair, or modification of the fixture without prior written authorization from the manufacturer will render the warranty void.