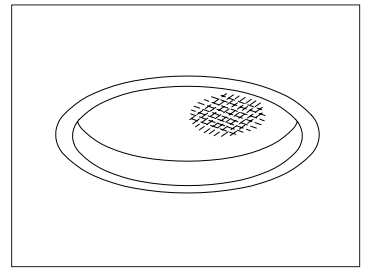


CATALOG #	TYPE	
JOB NAME	WATTAGE	VOLTAGE

12" 2 Triple 32 WATT MAXIMUM

RR01261

Medical / Surgical Patient Rooms: Recessed Round General Illumination



Features

Lamps

- Designed for two 4-pin triple tube amalgam or quad compact fluorescent lamps: 32/26W triple or 26W quad.

Ballast: Multi-Wattage/Voltage

- Installed electronic high power factor, thermally protected. For lower wattages see Option -43. For dimming see Option -39.
- 120-277 multi-volt; 50-60 Hz. THD <10%.
- ClickQuick connectors for fast servicing.
- Cold weather -22°F (-30°C).
- End of lamp life protection circuit. RFI filter.
- Internally fused. Also see Options -FS, -FD.

Reflector

- Clear specular Alzak® aluminum.

Trim Assembly

- Smooth seamless tapered white aluminum flare. Self-flanged trim.
- Regressed tempered prismatic low brightness, spread distribution C#73 lens.

- Torsion springs retain snug fit to ceiling.
- Optional lenses and flat trim available.

Aluminum Housing

- Acrylic enameled. Rustproof: Exceeds 1000 hour ASTM 5% salt spray test.
- Lightweight: Minimizes ceiling load.
- Cool operation: Extends component life.
- Entire luminaire serviced through trim.
- Built-in plaster frame.

Outlet Box

- UL listed, prewired 14 GA (NEC) galvanized steel with removable insulated cover.
- 1/2" and 3/4" knockouts.

Installation

- 27" galvanized hanger bars with adjustable mounting brackets (2) supplied.
- Recesses in any ceiling type.

UL, C-UL (Canada) Listings

- Wet, damp or dry locations, covered ceilings.
- Through-branch circuit conductors (up to 6 #12). Supply wire rating: 90°C.

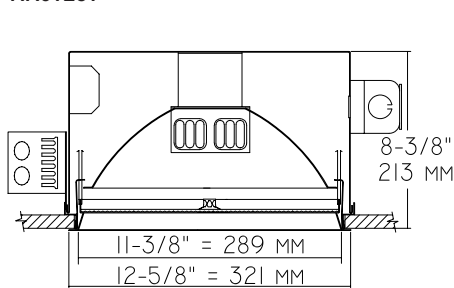
Three Year Limited Warranty

- Complete standard fixture and ballast.

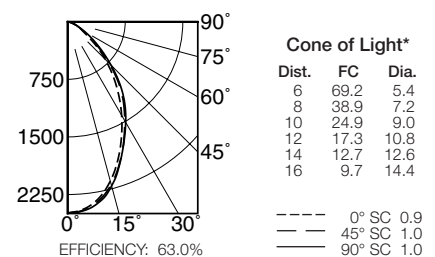
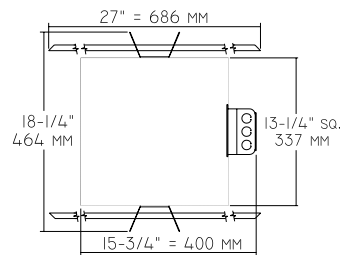
Recessed Round
Regressed
Lens

Performance at a Glance

RR01261



Ceiling Cut-out
12 1/4"



* Dia. (in ft.) shown is where FC value is half the FC at nadir.

Cone of Light Key
Ft. Distance from fixture
FC Footcandles at nadir (0°)
Dia. Circle of light at 50% of FC

THE KIRLIN COMPANY

3401 EAST JEFFERSON AVENUE • DETROIT, MICHIGAN 48207-4232
 (313) 259-6400 • Fax: (313) 259-9409 OR (313) 259-3121 • www.kirlinlighting.com

HEALTHCARE FACILITY
& PATIENT LIGHTING

MAXIMUM WATTAGE

2 Triple 32

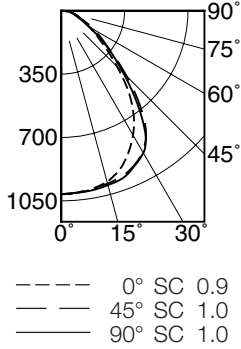
CATALOG NUMBER

RR01261

Detailed Photometry - Installed Fixture

Photometry from I.T.L., Boulder, CO

RR01261 (2 Triple 32)



EFFICIENCY : 63.0%

CANDLEPOWER DISTRIBUTION					
	0.0	22.5	45.0	67.5	90.0
0	2490	2490	2490	2490	2490
5	2447	2453	2460	2466	2468
15	2148	2166	2193	2212	2213
25	1659	1688	1728	1738	1734
35	1158	1204	1266	1292	1296
45	691	711	766	789	800
55	306	330	355	381	398
65	151	142	153	160	155
75	45	48	51	55	58
85	0	0	0	0	0
90	0	0	0	0	0

COEFFICIENTS OF UTILIZATION							
RF	20						
	80			50			
RC	70	50	30	10	50	30	10
RW	70	50	30	10	50	30	10
1	82	80	77	75	75	73	72
2	77	72	68	65	68	65	63
3	71	65	61	57	62	59	56
4	67	60	54	51	57	53	50
5	62	55	49	45	52	48	45
6	58	50	45	41	48	44	40
7	55	46	41	37	45	40	37
8	51	43	38	34	41	37	34
9	48	40	35	31	39	34	31
10	46	37	32	29	36	32	29

ITL TEST #42087

Patient Room Lighting Requirements are Surpassed by Kirlin

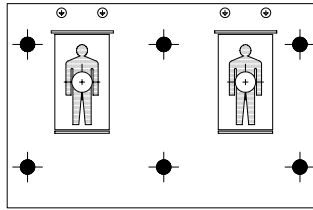
Recommended Standards for Patient Room Lighting by

IESNA "Lighting for Hospital and Healthcare Facilities": General Illumination 5-10 fc @ Work-plane 30" AFF

General Illumination

Avg. fc at Work-plane @ 30" AFF
(6 luminaires)

RR01261 53 fc
2-32W Triple tube



15' x 23' x 9'H room
size represented.

Options

Ballast, Wattage and Voltage

- 39 Installed electronic dimming ballast. Not Type IC listed. Indoor use. 10°C (50°F) minimum start. Specify wattage, voltage and brand.
- 43 Lower wattage: for 4-pin 18W triple or 18-13W quad. Specify wattage.
- 84 Fixture wired for two circuits. Also see -FD.
- 97 Specify other voltage. Consult factory.
- 98 347 volt, 50/60 Hz. input. Consult factory.

Emergency Ballast - Specify Voltage¹

- Internal (factory installed) ballast, test switch and indicator light. Suitable for damp locations from 0° to 50°C (32° to 122°F) or with Cold Weather version (see -CE) -20° to 55°C (-4° to 131°F).
- 73 Internal EM ballast. Specify voltage.

- CE Internal cold weather (-20° to 55°C) EM ballast. Specify voltage.
- HE¹ Internal higher lumen (up to 1250) EM ballast. only. Specify voltage.

Lenses and Trims

- 13 Clear 1/8" flat polycarbonate beneath prismatic flat C#73 lens.
- 17 3/16" prismatic high strength acrylic instead.
- 18 Anopal flat glass. Not enameled. Diffusing.
- 20 Louver, aluminum, egg-crate. 1/2" cube. White.
- 21 White translucent flat poly instead.
- 32 Trim extender. Broadens trim flange O.D. by 1".
- 44 Black OptiGroove regressed trim assembly instead; white self-flanged. With C#73 lens or add optional lens. Also see Option -94.
- 45 Gasket between trim and ceiling.
- 46 Gasket between lens and trim.

- 79 Extension collar for up to 2" thick ceilings.
- 94 Custom color trim. Consult factory.
- FR Fresnel lens instead. Concentrates light.
- FT Flat white trim with prismatic flat C#73 glass or add -13, -17, -18, -21 or -FR.
- TC Teflon safety coating for specified lens.

Other

- 99 Special modification. Consult factory.
- FD Two additional in-line fuses. One per ballast. Use with Option -84. Not available with Option -98(347V).
- FS Additional in-line fuse. Not available with Option -98(347V).
- LE With 4-pin electronic lamps. 3500°K standard. 82 CRI and 12,000 hour life. Specify wattage, style and color temperature.

¹ Visit www.kirlinlighting.com for most current performance / specifications.

SUBMITTAL DATA

APPROVAL STAMP

JOB NAME _____
 TYPE _____
 WATTAGE _____ VOLTAGE _____
 CATALOG NUMBER _____

LIMITED WARRANTY: CATALOGED KIRLIN FIXTURES ARE WARRANTED FREE OF DEFECTS IN WORKMANSHIP OR MATERIAL FOR THREE YEARS FROM DATE OF PURCHASE. INSTALLATION TO N.E.C. / IN-NORMAL USE. Manufacturer at the option will replace or repair each fixture or refund the purchase price on presentation of proof of purchase and defective fixture at the office of manufacturer within three years of original shipment. Liability of manufacturer is limited to the foregoing, and manufacturer shall not be liable for any other damages, direct or indirect, sustained or suffered by purchaser or any person. This warranty is supplied to the buyer in place of all other warranties, expressed or implied. Seller does not warrant as to merchantability or fitness for a particular use, nor will any oral statement constitute a warranty or amend this specific warranty. Abnormal use, abuse of the fixture, improper installation, or repair, or modification of the fixture without prior written authorization from the manufacturer will render the warranty void.