

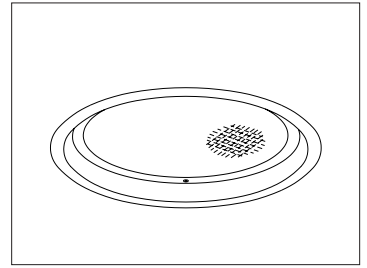
CATALOG #	TYPE	
JOB NAME	WATTAGE	VOLTAGE

10" 1 PAR38 100 WATT MAXIMUM

RR01096

## Sealed & Gasketed "IP65 Rated" Tungsten Halogen for Patient & Isolation Rooms

Hospitals • Urgent Care • Skilled Nursing



### Specifications

#### Lamp

- Designed for one vertical tungsten halogen lamp (by others): 100W maximum PAR38. See Option -LG for dichroic green PAR38 lamp.
- Rated 4200 hour life, 100 CRI.
- Dimmable (controls by others).
- Glazed porcelain medium base socket.

#### Reflector

- Specular Alzak® aluminum.

#### Trim / Lens Assembly

- Rustproof 100% aluminum grooveless, smooth, self-flanged white trim.
- C#73 tempered prismatic glass spread lens. See Option -GE for green acrylic filter.

#### 5X Sealed and Gasketed

- (1) Silicone seal between trim and lens seals lens to trim, (2) closed cell gasketing between trim and housing flange seals trim to housing, (3) closed cell gasketing on trim flange seals flange to ceiling (4) closed cell gasketing on bottom pan seals housing to ceiling and (5) neoprene O-rings on stainless steel fasteners seal fasteners to trim.

#### Aluminum Housing

- Acrylic enameled. Rustproof: Exceeds 1000 hour ASTM 5% salt spray test.
- Lightweight: Minimizes ceiling load.
- Cool operation: Extends component life and reduces air conditioning load.
- Entire luminaire serviced through aperture.
- Built-in plaster frame (housing flange).

#### Outlet Box

- UL listed, prewired 14 GA (NEC) galvanized steel with removable insulated cover.
- 1/2" and 3/4" knockouts.
- Thermal protector (per current NEC) provides automatic cut-off if rated wattage is exceeded.

#### Installation

- 27" galvanized hanger bars with adjustable mounting brackets (2) supplied.
- Recesses indoor or outdoor in covered locations.

#### UL, C-UL (Canada) Listings

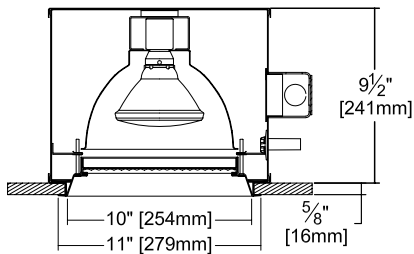
- Wet, damp or dry locations, covered ceilings.
- Through-branch conductors (6 #12).

#### Three Year Limited Warranty

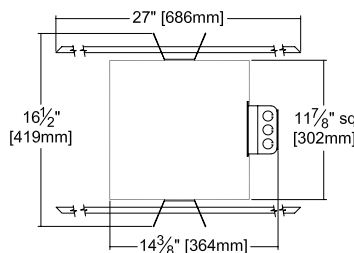
- Complete standard fixture and ballast.

### Performance at a Glance

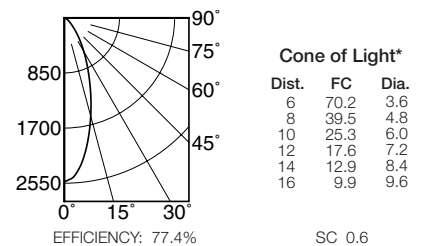
RR01096



Ceiling Cut-out  
10 1/2" Dia.



(100W 40° Flood Shown)



#### Cone of Light Key

- Ft. Distance from fixture
- FC Footcandles at nadir (0°)
- Dia. Circle of light at 50% of FC

\* Dia. (in ft.) shown is where FC value is half the FC at nadir.

## THE KIRLIN COMPANY

3401 EAST JEFFERSON AVENUE • DETROIT, MICHIGAN 48207-4232  
(313) 259-6400 • Fax: (313) 259-9409 OR (313) 259-3121 • www.kirlinlighting.com

PATIENT EXAM &  
HEALTHCARE LIGHTING

MAXIMUM WATTAGE

1 PAR38 100

CATALOG NUMBER

RR01096

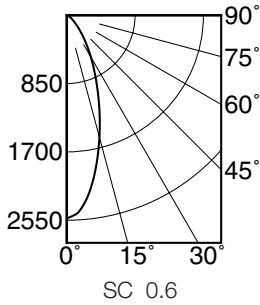
DUE TO OUR CONTINUING EFFORT TO IMPROVE PRODUCTS, TECHNICAL INFORMATION IS SUBJECT TO CHANGE WITHOUT NOTICE.

Alzak® is a registered trademark of ALCOA.

Detailed Photometry - Installed Fixture

Photometry from I.T.L., Boulder, CO

RR01096 (100 Watt 40° Flood)



CANDLEPOWER DISTRIBUTION					
	0.0	22.5	45.0	67.5	90.0
0	2528	2528	2528	2528	2528
5	2370	2370	2370	2370	2370
15	1571	1571	1571	1571	1571
25	847	847	847	847	847
35	410	410	410	410	410
45	174	174	174	174	174
55	76	76	76	76	76
65	41	41	41	41	41
75	17	17	17	17	17
85	2	2	2	2	2
90	0	0	0	0	0

COEFFICIENTS OF UTILIZATION							
RF	20						
	80				50		
RC	70	50	30	10	50	30	10
RW	70	50	30	10	50	30	10
1	87	85	83	81	80	79	77
2	83	79	75	72	75	72	70
3	78	73	69	66	70	67	64
4	74	68	63	60	65	62	59
5	70	63	59	55	61	57	54
6	67	60	55	51	58	54	51
7	63	56	51	48	54	50	47
8	60	53	48	45	52	47	45
9	58	50	45	42	49	45	42
10	55	47	43	40	47	43	40

ITL TEST #61704

Options

Wattage and Voltage

- 58 277/120 volt stepdown transformer for 277 volt line input, prewired into fixture.

Lenses and Trims

- 28 Tempered clear glass instead.
- 94 Custom trim color/finish. Specify. Consult factory.
- CF High temperature glass color filter added to trim assembly. Consult factory.

Other

- 99 Special modification. Consult factory.
- LG With dichroic green PAR38 lamp.
- LP With PAR38 lamp. Specify wattage and beam spread.

<sup>1</sup> Visit [www.kirlinlighting.com](http://www.kirlinlighting.com) for most current performance/specifications.

SUBMITTAL DATA

JOB NAME  
TYPE  
WATTAGE VOLTAGE  
CATALOG NUMBER

APPROVAL STAMP

LIMITED WARRANTY: CATALOGED KIRLIN FIXTURES ARE WARRANTED FREE OF DEFECTS IN WORKMANSHIP OR MATERIAL FOR THREE YEARS FROM DATE OF PURCHASE. INSTALLED TO N.E.C. (NOMINAL USE. Manufacturer at the option will repair or replace each fixture or refund the purchase price on presentation of proof of purchase and defective fixture at the office of manufacturer within three years of original shipment. Liability of manufacturer is limited to the foregoing, and manufacturer shall not be liable for any other damages, direct or indirect, sustained or suffered by purchaser or any person. This warranty is supplied to the buyer in place of all other warranties, expressed or implied. Seller does not warrant as to merchantability or fitness for a particular use, nor will any oral statement constitute a warranty or amend this specific warranty. Abnormal use, abuse of the fixture, improper installation, or repair, or modification of the fixture without prior written authorization from the manufacturer will render the warranty void.