

CATALOG #	TYPE	
JOB NAME	WATTAGE	VOLTAGE

10" 1 PAR38 250 WATT MAXIMUM

RR01013

Adjustable Medical Exam Light: 360° x 30°

Features

Lamp

- Designed for: 250 watt (max.) PAR38 lamp (by others). Rated 4200 hour life.
- 3000°K color temperature and 100 CRI for accurate tissue rendering and patient evaluation.
- Dimmable (controls by others).

Socket

- Glazed porcelain. Medium base.

Lamp Assembly

- Yoke assembly tilts 30° and rotates 358°.

Trim Assembly

- Self-flanged hydroformed seamless tapered smooth aluminum flare trim with white finish.
- Smooth surface prevents contaminant or dust build-up. Easily cleaned.
- Clear tempered regressed glass lens standard. Provides protective lamp shield. Optional lenses available; see Options.

Housing

- Cool, acrylic enameled aluminum.

- Dissipates heat across entire surface area. Ventilated for convection cooling.
- Rustproof: Exceeds 1000 hour ASTM 5% salt spray test.
- Entire luminaire serviced through removable trim assembly.
- Built-in plaster frame.

Outlet Box

- Prewired 14 GA (NEC) galvanized steel, UL listed; with removable insulated cover.
- 1/2" and 3/4" knockouts.

Installation

- 27" galvanized hanger bars with adjustable mounting brackets supplied.
- Lightweight. Recesses in any ceiling type.

UL, C-UL (Canada) Listings

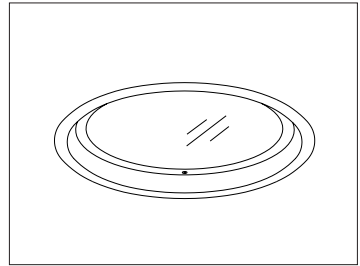
- Wet, damp or dry locations, covered ceilings.
- Through-branch circuit conductors (6 #12). Supply wire rating: 90°C.

Three Year Limited Warranty

- Complete standard fixture.

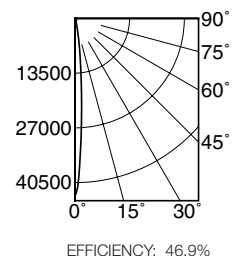
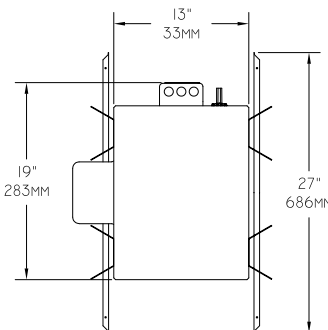
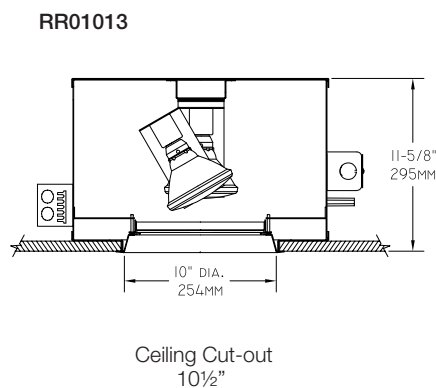
Thermal Protection

- Per current NEC.



Recessed Round
Lensed
Adjustable Exam

Performance at a Glance



THE KIRLIN COMPANY

3401 EAST JEFFERSON AVENUE • DETROIT, MICHIGAN 48207-4232
(313) 259-6400 • Fax: (313) 259-9409 OR (313) 259-3121 • www.kirlinlighting.com

HEALTHCARE FACILITY
& PATIENT LIGHTING

MAXIMUM WATTAGE

1 PAR38 250

CATALOG NUMBER

RR01013

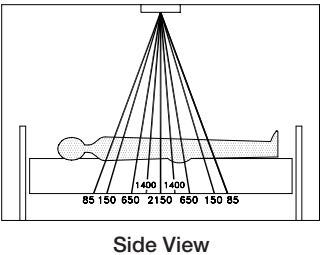
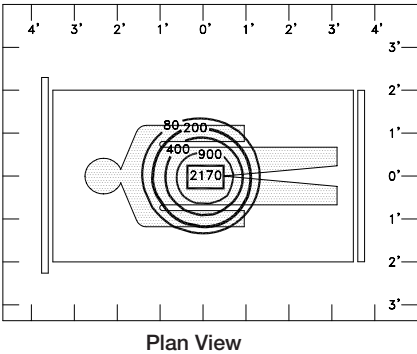
DUE TO OUR CONTINUING EFFORT TO IMPROVE PRODUCTS, TECHNICAL INFORMATION IS SUBJECT TO CHANGE WITHOUT NOTICE.

Footcandle Distribution Data

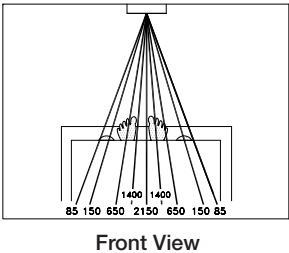
Photometry from I.T.L., Boulder, CO

- Notes:
- 1. All lighting levels are expressed in average footcandles, with distances expressed in feet, as measured at the work plane (3'6").
 - 2. The work plane (3'6") is defined as: examination bed height, plus patient body depth.
 - 3. Fixture is centered over examination bed with its longest axis parallel to the length of the bed.

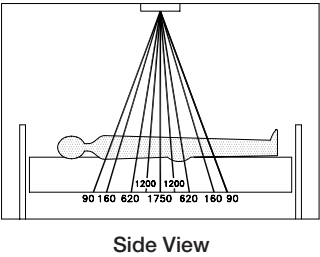
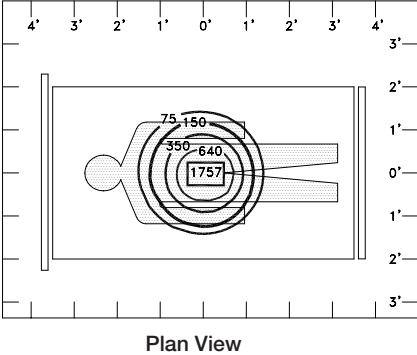
Ceiling Height: 8' • Work Plane: 3'6"



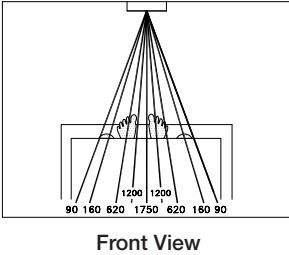
DATA FROM I.T.L. TEST No. 48779



Ceiling Height: 8'6" • Work Plane: 3'6"



DATA FROM I.T.L. TEST No. 48779



Options

- 10 Tinted tempered glass lens instead; raises color temperature; reduces CRI and lumen output.
 - 15 Prismatic C#73 flat glass lens instead. Broadens illumination distribution.
 - 26 Tamperproof trim assembly with key.
 - 27 Clear 1/4" tempered glass with C#73 above for added vandal resistance. Use with Option -26.
 - 32 Trim extender. Broadens trim flange by 1" to cover larger ceiling opening.
- 44 Black OptiGroove regressed trim assembly instead; with clear lens or add optional lens. White flange. Also see Option -94.
 - 45 Gasket between trim flange and ceiling. (Minimizes dust streaks on ceiling.)
 - 46 Gasket between lens and trim. Minimizes contaminant and dust entry.
 - 58 277/120 volt stepdown transformer for 277 volt line input, prewired into each fixture; with 277 volt thermal protector.
- 94 Custom color self-flanged smooth flare trim. Consult factory.
 - 97 For other input supply voltages, consult factory.
 - 99 Special modification. Consult factory.
 - LP With tungsten halogen lamp. Specify 250 watt PAR38.
 - TA Top access. For servicing from above ceiling.
 - TC Teflon coated safety lens; retains glass particles in event of breakage.

SUBMITTAL DATA

APPROVAL STAMP

JOB NAME
TYPE
WATTAGE
VOLTAGE
CATALOG NUMBER

LIMITED WARRANTY: CATALOGED KIRLIN FIXTURES ARE WARRANTED FREE OF DEFECTS IN WORKMANSHIP OR MATERIAL FOR THREE YEARS FROM DATE OF PURCHASE. INSTALLED TO N.E.C. IN NORMAL USE. Manufacturer at its option will replace or repair each fixture or refund the purchase price on presentation of proof of purchase and defective fixture at the office of manufacturer within three years of original shipment. Liability of manufacturer is limited to the foregoing, and manufacturer shall not be liable for any other damages, direct or indirect, sustained or suffered by purchaser or any person. This warranty is supplied to the buyer in place of all other warranties, expressed or implied. Seller does not warrant as to merchantability or fitness for a particular use, nor will any oral statement constitute a warranty or amend this specific warranty. Abnormal use, abuse of the fixture, improper installation, or repair or modification of the fixture without prior written authorization from the manufacturer will render the warranty void.