

CATALOG #	TYPE	
JOB NAME	WATTAGE	VOLTAGE

9" 1 T4Q 250 WATT MAXIMUM

RR00959

## Warming Light for Neonatal, Burn, Trauma and General Patient Comfort



### Features

#### Lamp Assembly

- Designed for:
  - 1 vertical 250 watt (max.) frosted tungsten halogen T4Q lamp (by others).
- Double contact bayonet (DCB) base.
- Rated 2000 hour life.
- Suitable for use with dimmer (by others) for variable temperature.
- Glazed porcelain medium base socket. Vertical.

#### Reflector

- Low brightness clear specular parabolic Alzak® aluminum.

#### Trim Assembly

- Smooth white seamless tapered aluminum self-flanged flare trim.
- Tempered Microlux (microprismatic) lens.
- Torsion springs retain snug fit to ceiling.

#### Housing

- Cool. Acrylic enameled 100% aluminum.
- Rustproof: Exceeds 1000 hour ASTM 5% salt spray test.

- Dissipates heat across entire surface area.
- Entire luminaire visible and serviceable from below through removable trim assembly.
- Built-in plaster frame. Also see Option -79.

#### Outlet Box

- Prewired 14 GA (NEC) galvanized steel, UL listed; with removable insulated cover.
- 1/2" and 3/4" knockouts.

#### Installation

- 27" hanger bars supplied (2).
- Fully adjustable universal mounting brackets supplied (2).
- Lightweight. Recesses in any ceiling type.

#### UL, C-UL (Canada) Listings

- Wet, damp or dry locations, covered ceilings.
- Through-branch circuit conductors (up to 6 #12). Supply wire rating: 90°C.

#### Three Year Limited Warranty

- Complete standard fixture.

#### Thermal Protection (Per Current NEC)

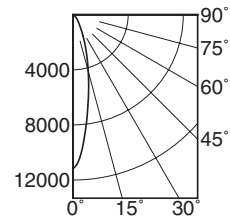
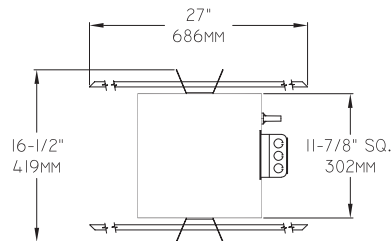
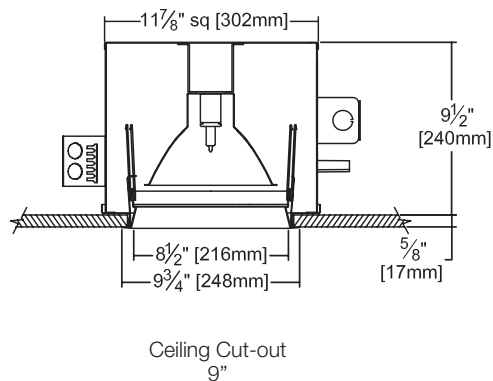
- Thermal protector included which provides automatic cut-off if rated temperature is exceeded. (Insulation related)

Recessed Round  
Tempered Glass  
Warming

### Performance at a Glance

RR00959

KIRLIN RECOMMENDS T4 HALOGEN LAMPS BY USHIO, GE OR SYLVANIA ONLY



#### Cone of Light\*

Dist.	FC	Dia.
6	309.8	2.3
8	174.3	3.1
10	111.5	3.9
12	77.5	4.6
14	56.9	5.4
16	43.6	6.2

SC 0.4

EFFICIENCY: 72.2%

## THE KIRLIN COMPANY

3401 EAST JEFFERSON AVENUE • DETROIT, MICHIGAN 48207-4232  
(313) 259-6400 • Fax: (313) 259-9409 OR (313) 259-3121 • [www.kirlinlighting.com](http://www.kirlinlighting.com)

HEALTHCARE FACILITY  
& PATIENT LIGHTING

MAXIMUM WATTAGE

1 T4Q 250

CATALOG NUMBER

RR00959

DUE TO OUR CONTINUING EFFORT TO IMPROVE PRODUCTS, TECHNICAL INFORMATION IS SUBJECT TO CHANGE WITHOUT NOTICE.

Alzak® is a registered trademark of ALCOA.

RR00959

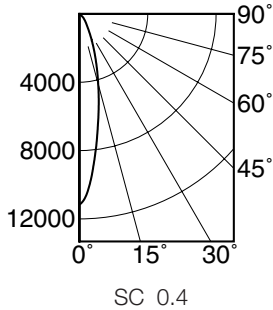
9" 1 T4Q 250 WATT MAXIMUM

**KIRLIN**  
 Since 1895

## Detailed Photometry - Installed Fixture

Photometry from I.T.L., Boulder, CO

### RR00959 (250 Watt T4)



CANDLEPOWER DISTRIBUTION					
	0.0	22.5	45.0	67.5	90.0
0	11153	11153	11153	11153	11153
5	9105	9105	9105	9105	9105
15	4256	4256	4256	4256	4256
25	1714	1714	1714	1714	1714
35	704	704	704	704	704
45	342	342	342	342	342
55	26	26	26	26	26
65	0	0	0	0	0
75	0	0	0	0	0
85	0	0	0	0	0
90	0	0	0	0	0

COEFFICIENTS OF UTILIZATION							
RF	20						
RC	80				50		
RW	70	50	30	10	50	30	10
1	82	81	79	77	76	75	74
2	79	76	73	71	72	70	69
3	75	71	68	66	68	66	64
4	72	67	64	61	65	62	60
5	69	64	60	57	62	59	57
6	66	61	57	54	59	56	54
7	64	58	54	51	56	53	51
8	61	55	51	49	54	51	48
9	59	53	49	47	52	49	46
10	57	51	47	44	50	47	44

ITL TEST #55794

## Options

- 32 Trim extender. Broadens trim flange O.D. by 1" to cover larger ceiling opening.
- 44 Black OptiGroove regressed trim assembly instead; white self-flanged. Also see Option -94.
- 45 Gasket between trim flange and ceiling. (Minimizes dust streaks on ceiling.)
- 46 Gasket between lens and trim. Minimizes contaminant and dust entry.
- 79 Extension collar for up to 2" thick ceilings.
- 94 Custom color flare trim. Consult factory.
- 99 Special modification. Consult factory.
- FT Flat white trim instead.
- LP With DCB 250 watt T4Q frosted lamp.
- TA Top access. For servicing from above ceiling.

## SUBMITTAL DATA

JOB NAME

TYPE

WATTAGE

VOLTAGE

CATALOG NUMBER

## APPROVAL STAMP

LIMITED WARRANTY: CATALOGED KIRLIN FIXTURES ARE WARRANTED FREE OF DEFECTS IN WORKMANSHIP OR MATERIAL FOR THREE YEARS FROM DATE OF PURCHASE, INSTALLED TO N.E.C. IN NORMAL USE. Manufacturer at the option will replace or repair each fixture or refund the purchase price on presentation of proof of purchase and defective fixture at the office of manufacturer within three years of original shipment. Liability of manufacturer is limited to the foregoing, and manufacturer shall not be liable for any other damages, direct or indirect, sustained or suffered by purchaser or any person. This warranty is supplied to the buyer in place of all other warranties, expressed or implied. Seller does not warrant as to merchantability or fitness for a particular use, nor will any oral statement constitute a warranty or amend this specific warranty. Abnormal use, abuse of the fixture, improper installation, or repair, or modification of the fixture without prior written authorization from the manufacturer will render the warranty void.

 HEALTHCARE  
 NOV 2016