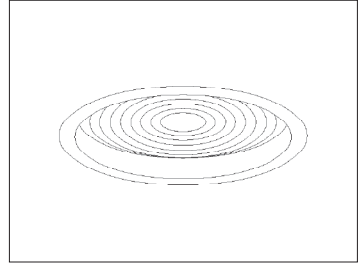


Warming Light for Neonatal, Burn, Trauma and General Patient Comfort



Recessed Round
Lensed
Warming

Features

Lamp Assembly

- Designed for:
250 watt (max.) R40 or 175 watt (max.)
PAR38 infrared incandescent heat lamp with
5000 hour life (by others).
- Suitable for use with dimmer (by others) for
variable temperature.
- Glazed porcelain medium base socket.
Vertical.

Reflector

- Specular Alzak® aluminum.

Trim Assembly

- Smooth white seamless tapered aluminum
self-flanged flare trim.
- Regressed clear Fresnel lens.
- Torsion springs retain snug fit to ceiling.

Housing

- Cool. Acrylic enameled 100% aluminum.
- Rustproof: Exceeds 1000 hour ASTM 5% salt
spray test.
- Dissipates heat across entire surface area.

- Entire luminaire visible and serviceable from
below through removable trim assembly.
- Built-in plaster frame. Also see Option -79.

Outlet Box

- Prewired 14 GA (NEC) galvanized steel, UL
listed; with removable insulated cover.
- 1/2" and 3/4" knockouts.

Installation

- 27" hanger bars supplied (2).
- Fully adjustable universal mounting brackets
supplied (2).
- Lightweight. Recesses in any ceiling type.

UL, C-UL (Canada) Listings

- Wet, damp or dry locations, covered ceilings.
- Through-branch circuit conductors (up to 6
#12). Supply wire rating: 90°C.

Three Year Limited Warranty

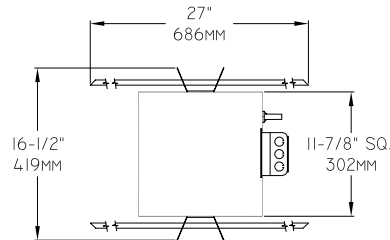
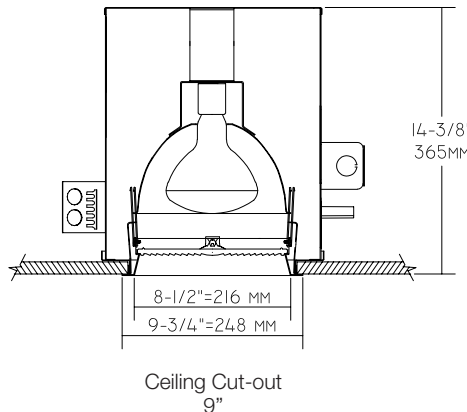
- Complete standard fixture.

Thermal Protection (Per Current NEC)

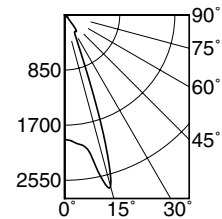
- Thermal protector included which provides
automatic cut-off if rated temperature is
exceeded. (Insulation related)

Performance at a Glance

RR00957



RR00957 (250 Watt R40)



Cone of Light*

Dist.	FC	Dia.
6	53.3	4.5
8	30.0	6.0
10	19.2	7.5
12	13.3	8.9
14	9.8	10.4
16	7.5	11.9

SC 0.6

EFFICIENCY: 64.1%

THE KIRLIN COMPANY

3401 EAST JEFFERSON AVENUE • DETROIT, MICHIGAN 48207-4232
(313) 259-6400 • Fax: (313) 259-9409 OR (313) 259-3121 • www.kirlinlighting.com

HEALTHCARE FACILITY
& PATIENT LIGHTING

MAXIMUM WATTAGE

1 PAR38/R40 175/250

CATALOG NUMBER

RR00957

DUE TO OUR CONTINUING EFFORT TO IMPROVE PRODUCTS, TECHNICAL
INFORMATION IS SUBJECT TO CHANGE WITHOUT NOTICE.

Alzak® is a registered trademark of ALCOA.

RR00957

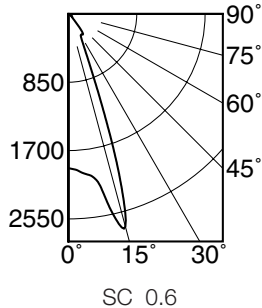
9" 1 PAR38/R40 175/250 WATT MAXIMUM

KIRLIN
 Since 1895

Detailed Photometry - Installed Fixture

Photometry from I.T.L., Boulder, CO

RR00957 (250 Watt R40)

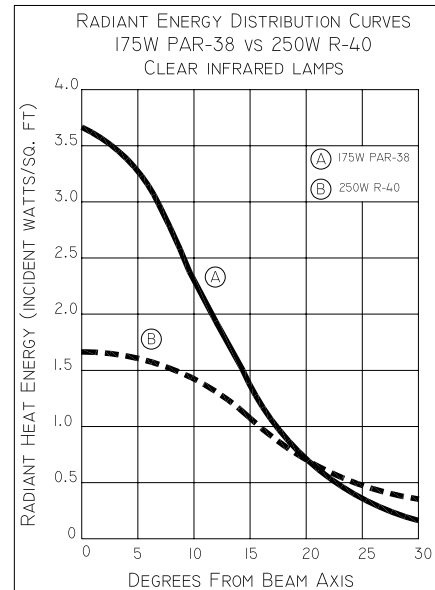


EFFICIENCY : 64.1%

CANDLEPOWER DISTRIBUTION					
	0.0	22.5	45.0	67.5	90.0
0	1918	1918	1918	1918	1918
5	1984	1984	1984	1984	1984
15	2739	2739	2739	2739	2739
25	476	476	476	476	476
35	313	313	313	313	313
45	80	80	80	80	80
55	47	47	47	47	47
65	23	23	23	23	23
75	10	10	10	10	10
85	0	0	0	0	0
90	0	0	0	0	0

COEFFICIENTS OF UTILIZATION							
RF	20						
	80				50		
RC							
RW	70	50	30	10	50	30	10
1	73	71	70	68	67	66	65
2	69	66	64	62	63	61	60
3	66	62	59	57	60	57	55
4	63	59	55	53	56	54	52
5	60	55	52	49	54	51	49
6	58	52	49	46	51	48	46
7	55	50	46	44	49	46	43
8	53	47	44	41	46	43	41
9	51	45	42	39	44	41	39
10	49	43	40	37	42	39	37

ITL TEST #51593


 Concentrating (A) vs. Widespread (B)
 Distributions

Options

- 32 Trim extender. Broadens trim flange O.D. by 1" to cover larger ceiling opening.
- 44 Black OptiGroove regressed trim assembly instead; white self-flanged. Also see Option -94.
- 45 Gasket between trim flange and ceiling. (Minimizes dust streaks on ceiling.)
- 46 Gasket between lens and trim. Minimizes contaminant and dust entry.
- 79 Extension collar for up to 2" thick ceilings.
- 94 Custom color flare trim. Consult factory.
- 99 Special modification. Consult factory.
- FT Flat white trim instead.
- LP With lamp. Specify 250 watt R40 or 175 watt PAR38 infrared heat. 5000 hour rating.
- TA Top access. For servicing from above ceiling.

SUBMITTAL DATA

JOB NAME

TYPE

WATTAGE

VOLTAGE

CATALOG NUMBER

APPROVAL STAMP