

MRI Non-Ferrous 100 CRI Lighting with Attractive Alzak® Low Brightness Trim

Features

Non-Magnetic Lamp/Socket

- Designed for tungsten halogen lamp: 250 watt (max.) PAR38 (by others). Rated 4200 hour life.
- 100 CRI.
- Dimmable (controls by others).
- For operation on D.C. circuits.
- Glazed porcelain medium base vertical socket.
- Nickel plated brass screw shell. Silicone leads.

Reflector

- Self-flanged parabolic SoftTex™ softly etched Alzak® aluminum reflector. Resists smudges, fingerprints, and dust.
- Optional self-flanged colors and finishes available. See Options.

Housing

- Acrylic enameled 100% aluminum.
- Rustproof: Exceeds 1000 hour ASTM 5% salt spray test.
- Cool: Dissipates heat across entire surface area.

- Entire luminaire visible and serviceable from below through removable reflector.
- Built-in plaster frame. Also see Option -79.

Outlet Box

- Prewired. 100% aluminum. UL listed.
- Accessible. 1/2" and 3/4" knockouts.

Installation

- Lightweight. Recesses in any ceiling type.
- 27" aluminum hanger bars supplied (2).
- Fully adjustable universal non-magnetic mounting brackets supplied (2).

UL, C-UL (Canada) Listings

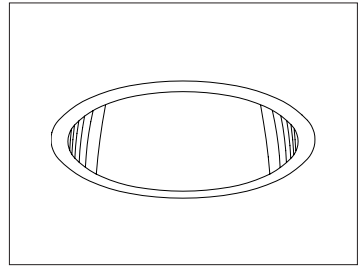
- Wet, damp or dry locations, covered ceilings.
- Through-branch circuit conductors (up to 6 #12).
- Supply wire rating: 90°C.

Three Year Limited Warranty

- Complete standard fixture.

Thermal Protection (Per Current NEC)

- Thermal protector included which provides automatic cut-off if rated temperature is exceeded. (Insulation related)

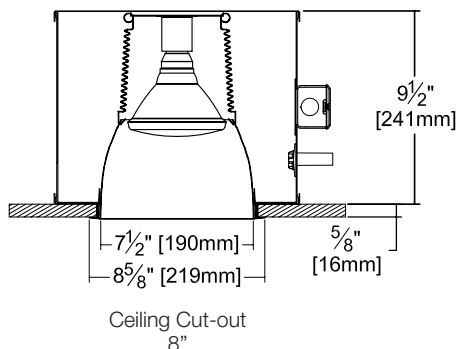


Recessed Round
Open
MRI

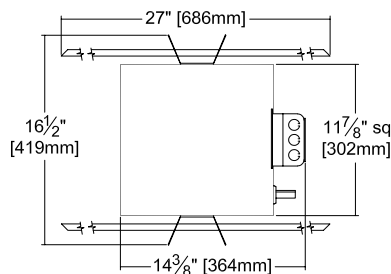
NOT RESTRICTED TO END-OF-RUN USE

Performance at a Glance

RR00723

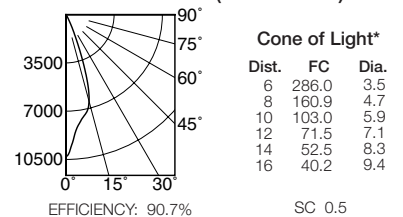


Cone of Light Key
Ft. Distance from fixture
FC Footcandles at nadir (0°)
Dia. Circle of light at 50% of FC

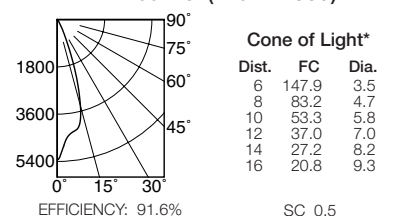


* Dia. (in ft.) shown is where FC value is half the FC at nadir.

RR00723 (250W Flood)



RR00723 (120W Flood)



THE KIRLIN COMPANY

3401 EAST JEFFERSON AVENUE • DETROIT, MICHIGAN 48207-4232
(313) 259-6400 • Fax: (313) 259-9409 OR (313) 259-3121 • www.kirlinlighting.com

HEALTHCARE FACILITY
& PATIENT LIGHTING

MAXIMUM WATTAGE

1 PAR38 250

CATALOG NUMBER

RR00723

DUE TO OUR CONTINUING EFFORT TO IMPROVE PRODUCTS, TECHNICAL INFORMATION IS SUBJECT TO CHANGE WITHOUT NOTICE.

Alzak® is a registered trademark of ALCOA.

RR00723

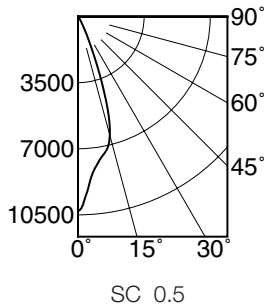
7" 1 PAR38 250 WATT MAXIMUM

KIRLIN
 Since 1895

Detailed Photometry - Installed Fixture

Photometry from I.T.L., Boulder, CO

RR00723 (250 Watt Flood)



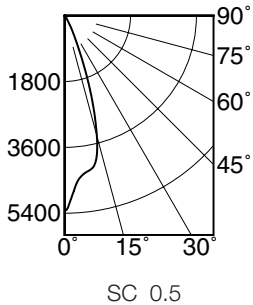
EFFICIENCY : 91.6%

CANDLEPOWER DISTRIBUTION					
	0.0	22.5	45.0	67.5	90.0
0	10296	10296	10296	10296	10296
5	8437	8437	8437	8437	8437
15	6504	6504	6504	6504	6504
25	1225	1225	1225	1225	1225
35	178	178	178	178	178
45	39	39	39	39	39
55	0	0	0	0	0
65	0	0	0	0	0
75	0	0	0	0	0
85	0	0	0	0	0
90	0	0	0	0	0

COEFFICIENTS OF UTILIZATION							
RF	20						
RC	80						
RW	70	50	30	10	50	30	10
1	104	102	100	99	97	95	94
2	100	97	94	92	93	91	89
3	97	92	89	86	89	86	84
4	94	88	85	82	86	83	80
5	90	85	81	78	82	79	77
6	87	81	77	74	80	76	74
7	85	78	74	71	77	73	71
8	82	76	71	69	74	71	68
9	79	73	69	66	72	68	66
10	77	70	67	64	69	66	64

ITL TEST #47281

RR00723 (120 Watt Flood)



EFFICIENCY : 90.7%

CANDLEPOWER DISTRIBUTION					
	0.0	22.5	45.0	67.5	90.0
0	5326	5326	5326	5326	5326
5	4483	4483	4483	4483	4483
15	3403	3403	3403	3403	3403
25	661	661	661	661	661
35	97	97	97	97	97
45	21	21	21	21	21
55	0	0	0	0	0
65	0	0	0	0	0
75	0	0	0	0	0
85	0	0	0	0	0
90	0	0	0	0	0

COEFFICIENTS OF UTILIZATION							
RF	20						
RC	80						
RW	70	50	30	10	50	30	10
1	105	103	101	100	98	96	95
2	102	98	95	93	94	92	90
3	98	93	90	87	90	87	85
4	95	89	86	83	87	84	81
5	91	86	82	79	83	80	78
6	88	82	78	75	80	77	75
7	86	79	75	72	78	74	72
8	83	76	72	70	75	72	69
9	80	74	70	67	73	69	67
10	78	71	67	65	70	67	64

ITL TEST #47282

Options

- 30 All white self-flanged reflector.
- 31 White flange (only) on self-flanged reflector.
- 32 Trim extender. Broadens trim flange O.D. by 1" to cover larger ceiling opening.
- 45 Gasket above reflector flange. (Minimizes dust streaks on ceiling.)
- 62 Clear specular Alzak® self-flanged reflector.
- 79 Extension collar for up to 2" thick ceiling.
- 94 Softex or specular custom color / finish self-flanged reflector. Consult factory.
- 99 Special modification. Consult factory.
- LP With PAR lamp. Specify wattage, style and beam spread.
- SG ShatterGuard™ tempered clear glass shield beneath lamp.

SUBMITTAL DATA

APPROVAL STAMP

JOB NAME

TYPE

WATTAGE

VOLTAGE

CATALOG NUMBER