

Uniform Illumination for MRI: Non-Ferrous Luminaire

Features

Non-Magnetic Lamp/Socket

- Designed for:
150 watt (max.) A21 frosted lamp (by others).
- Dimmable (controls by others).
- For operation on D.C. circuits.
- Glazed porcelain medium base horizontal socket.
Nickel plated brass screw shell. Silicone leads.

Reflector

- Specular Alzak® aluminum.

Trim Assembly

- Smooth white seamless tapered aluminum self-flanged flare trim.
- Prismatic low brightness, spread distribution C#73 lens standard.
- Optional lenses and flat trim available, see Options.
- Non-ferrous torsion springs retain snug fit to ceiling.

Housing

- Cool. Acrylic enameled 100% aluminum.
- Rustproof: Exceeds 1000 hour ASTM 5% salt spray test.

- Dissipates heat across entire surface area.
- Entire luminaire visible and serviceable from below through removable reflector.
- Built-in plaster frame. Also see Option -79.

Outlet Box

- Prewired. 100% aluminum. UL listed.
- Accessible. 1/2" and 3/4" knockouts.

Installation

- Lightweight. Recesses in any ceiling type.
- 27" aluminum hanger bars supplied (2).
- Fully adjustable universal non-magnetic mounting brackets supplied (2).

UL, C-UL (Canada) Listings

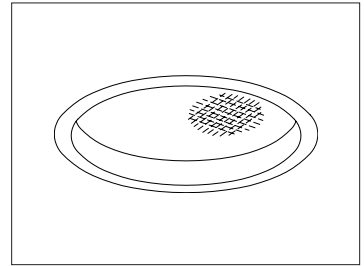
- Wet, damp or dry locations, covered ceilings.
- Through-branch circuit conductors (up to 6 #12).
Supply wire rating: 90°C.

Three Year Limited Warranty

- Complete standard fixture.

Thermal Protection (Per Current NEC)

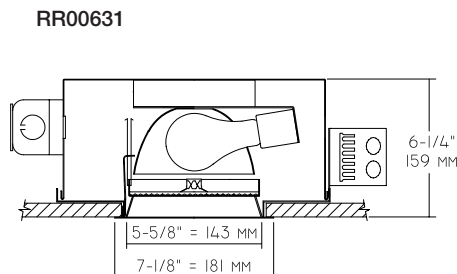
- Thermal protector included which provides automatic cut-off if rated temperature is exceeded. (Insulation related)



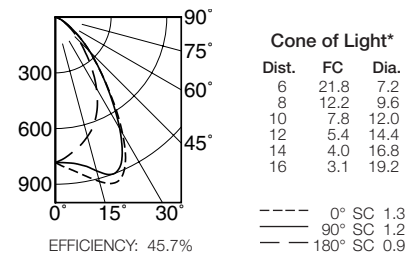
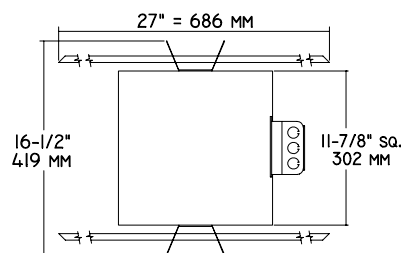
Recessed Round
Regressed Lensed
Shallow Plenum
MRI

NOT RESTRICTED TO END-OF-RUN USE

Performance at a Glance



Ceiling Cut-out
6 1/2"



* Dia. (in ft.) shown is where FC value is half the FC at nadir.

Cone of Light Key
Ft. Distance from fixture
FC Footcandles at nadir (0°)
Dia. Circle of light at 50% of FC

THE KIRLIN COMPANY

3401 EAST JEFFERSON AVENUE • DETROIT, MICHIGAN 48207-4232
 (313) 259-6400 • Fax: (313) 259-9409 OR (313) 259-3121 • www.kirlinlighting.com

HEALTHCARE FACILITY
& PATIENT LIGHTING

MAXIMUM WATTAGE

1 A21 150

CATALOG NUMBER

RR00631

DUE TO OUR CONTINUING EFFORT TO IMPROVE PRODUCTS, TECHNICAL INFORMATION IS SUBJECT TO CHANGE WITHOUT NOTICE.

Alzak® is a registered trademark of ALCOA.

RR00631

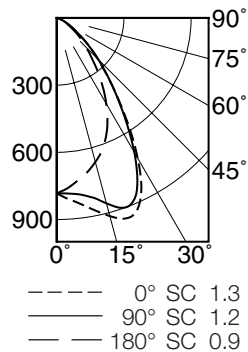
6" 1 A21 150 WATT MAXIMUM

KIRLIN
 Since 1895

Detailed Photometry - Installed Fixture

Photometry from I.T.L., Boulder, CO

RR00631 (150 Watt)



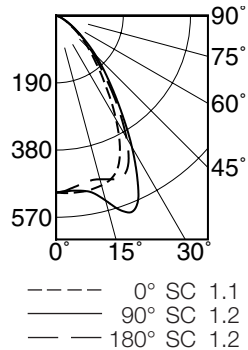
EFFICIENCY : 45.7%

CANDLEPOWER DISTRIBUTION					
	0.0	45.0	90.0	135.0	180.0
0	783	783	783	783	783
5	819	809	788	764	751
15	916	905	857	749	666
25	886	904	847	689	534
35	530	570	517	435	346
45	259	256	262	211	187
55	105	112	109	104	87
65	33	38	40	40	38
75	5	6	7	7	7
85	0	0	0	0	0
90	0	0	0	0	0

COEFFICIENTS OF UTILIZATION							
RF	20						
RC	80						
RW	70	50	30	10	50	30	10
1	51	50	48	47	47	46	45
2	48	45	43	41	43	41	40
3	45	41	39	36	39	37	36
4	42	38	35	33	36	34	32
5	39	35	32	29	33	31	29
6	37	32	29	26	31	28	26
7	35	30	26	24	29	26	24
8	33	27	24	22	27	24	22
9	31	26	22	20	25	22	20
10	29	24	21	19	23	21	19

ITL TEST #47287

RR00631 (100 Watt)



EFFICIENCY : 46.0%

CANDLEPOWER DISTRIBUTION					
	0.0	45.0	90.0	135.0	180.0
0	500	500	500	500	500
5	503	502	497	492	490
15	497	544	541	499	479
25	427	507	551	510	477
35	247	297	311	318	294
45	128	133	158	142	143
55	55	63	66	64	62
65	21	23	23	21	20
75	4	4	4	3	4
85	0	0	0	0	0
90	0	0	0	0	0

COEFFICIENTS OF UTILIZATION							
RF	20						
RC	80						
RW	70	50	30	10	50	30	10
1	52	50	49	48	47	46	45
2	49	46	44	42	44	42	40
3	45	42	39	37	40	38	36
4	43	38	35	33	37	34	32
5	40	35	32	30	34	31	29
6	37	33	29	27	31	29	27
7	35	30	27	25	29	26	24
8	33	28	25	22	27	24	22
9	31	26	23	21	25	23	21
10	29	24	21	19	24	21	19

ITL TEST #47285

Options

- 18 Anopal flat glass. Not enameled. Diffusing.
- 20 Louver, aluminum, egg-crate. 1/2" cube. White.
- 32 Trim extender. Broadens trim flange O.D. by 1" to cover larger ceiling opening.
- 44 Black OptiGroove regressed trim with white flange instead; with C#73 lens or add optional lens.
- 45 Gasket between trim flange and ceiling.
- 46 Gasket between lens and trim.
- 79 Extension collar for up to 2" thick ceiling.
- 94 Custom color flare trim. Consult factory.
- 99 Special modification. Consult factory.
- FR Fresnel lens instead.
- FT Flat white trim instead. Standard with prismatic flat glass, or add Option -18, -20 or -FR.
- TC Teflon safety coating for specified lens. Consult factory.

SUBMITTAL DATA

JOB NAME

TYPE

WATTAGE

VOLTAGE

CATALOG NUMBER

APPROVAL STAMP

LIMITED WARRANTY: CATALOGED KIRLIN FIXTURES ARE WARRANTED FREE OF DEFECTS IN WORKMANSHIP OR MATERIAL FOR THREE YEARS FROM DATE OF PURCHASE, INSTALLED TO N.E.C. (NOMINAL USE). Manufacturer at the option will replace or repair such fixture or refund the purchase price on presentation of proof of purchase and defective fixture at the office of manufacturer within three years of original shipment. Liability of manufacturer is limited to the foregoing, and manufacturer shall not be liable for any other damages, direct or indirect, sustained or suffered by purchaser or any person. This warranty is supplied to the buyer in place of all other warranties, expressed or implied. Seller does not warrant as to merchantability or fitness for a particular use, nor will any oral statement constitute a warranty or amend this specific warranty. Abnormal use, abuse of the fixture, improper installation, or repair, or modification of the fixture without prior written authorization from the manufacturer will render the warranty void.