

CATALOG #	TYPE	
JOB NAME	WATTAGE	VOLTAGE

# Lighting for Patient Spaces

## Rectangular 5" x 10" LED Exam Light

Up to 60,000 Hour Rated Life • Antimicrobial Trim • Wet Location  
LM-80 Qualified • LM-79 Certified Photometry

## Specifications

### Delivered System Performance\*

- Lumen Series: **Must Specify**
- 5000L:** 2x2500 (70W)
- Distribution: NFL standard
- Color temperature: 3500°K standard; optional: -27K, -30K or -41K
- CRI: 80+ standard; optional: -HC (90+)
- 60,000 Hour Rated Life (L70)
- Fully sustainable: removable for servicing

### Thermal Protection: SPECIFY VOLTAGE

- Thermal protector for insulation detection per UL/NEC; must specify input voltage

### Thermal Management System

- Aluminum heat sink and components for cool operation, long life, and low maintenance

### LED Driver - INTERNAL

- Indoor/Outdoor: -30°C to 60°C (-22°F to 140°F)
- 0-10V CCR dimming standard (100-10%)
- Voltage Options: **Must Specify**
- 120:** -120V (50-60Hz); load insensitive
- 277:** -277V (50-60Hz); load insensitive

### Trim and Lens Assembly

- Tapered smooth aluminum flare self-flanged
- white trim; easily cleaned
- Kirlin BioGard™ antimicrobial white finish continuously inhibits growth of bacteria on the coating of the trim
- Regressed tempered microprismatic glass lens
- Sturdy extruded aluminum construction
- Torsion springs retain snug fit to ceiling

### Acrylic Enameled Aluminum Housing

- Rustproof: exceeds 1000 hour ASTM 5% salt spray test; all components fully sustainable
- Cool operation extends component life
- Modular design; visible and fully serviceable through aperture
- Built-in plaster flange

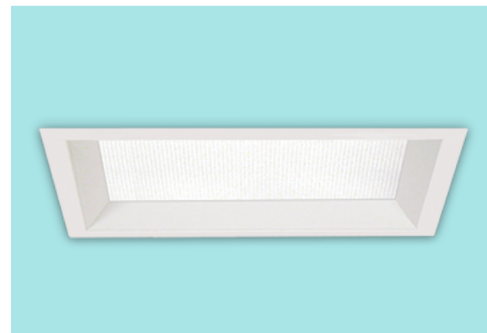
### Outlet Box (Galvanized)

- UL listed J-box with insulated removable cover; prewired 14 GA (NEC) with ½" and ¾" knockouts

### Installation & Hardware

- Indoor/outdoor in ceilings up to 1¼" thick
- Compatible with fire rated enclosures (by others)

## MRT-05512



- 27" galvanized hanger bars & adjusting brackets (2) supplied

### UL, C-UL (Canada) Listings

- Wet, damp or dry locations, covered ceilings
- Through-branch conductors (4 #12 AWG 90°C)

### IEC & FCC Compliance

- Meets IEC/EN 60601-1-2 electromagnetic compatibility standard for medical electrical equipment
- FCC Part 15 certified for EMI/RFI emissions

### FIVE YEAR Limited Warranty

- Complete standard fixture



## Options and Ordering Configuration


(Example: MRT-05512-5000L-120-30K-45)

Must Specify			Optional				
Model	Lumens	Volts	CCT & CRI	Driver Options	Emergency	Trim & Lens Options	Other Options
MRT-05512							
	-5000L	-120 -277  -97: Other voltage; consult factory	(Blank): 35K, 80+ CRI  <b>80+ CRI</b> -27K: 2700°K -30K: 3000°K -35K: 3500°K -41K: 4000°K -50K: 5000°K <b>90+ CRI</b> -27K-HC: 2700°K -30K-HC: 3000°K -35K-HC: 3500°K -41K-HC: 4000°K -50K-HC: 5000°K	(Blank): Standard 0-10V CCR 10% dim  -ECO: For use with Lutron EcoSystem controls; dims to 1% or consult factory	(Blank): None  -EI: Remote emergency inverter for 25% of rated lumens (-7000L) or 50% (-5000L); one array only; 90+ minutes; 60Hz input only; N/A for options -FS  -ERH: Remote emergency battery pack; delivers 1000 lumens; one array only; 90+ minutes (CEC Compliant)	(Blank): White trim, regressed prismatic lens  <b>Trim Finishes</b> -BKBG: BioGard™ anti-microbial black -94BG: BioGard™ anti-microbial custom color finish  <b>Other Trim Features</b> -45: Gasket between trim flange and ceiling -46: Gasket between trim and lens	(Blank): None  -99: Special modification; consult factory  -AWN: Athena Wireless Node; N/A for Dimming Option -ECO  -FS: Fused primary; One per fixture; not for use with Option -EI  <b>*Note:</b> For other integrated control solutions, such as nLight, contact factory

\*See note next page

## Infection Control Levels



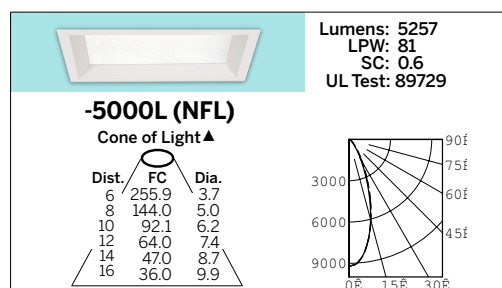
Level	Option	Infection Protection
1	Standard	 BioGard™

**Notes:**

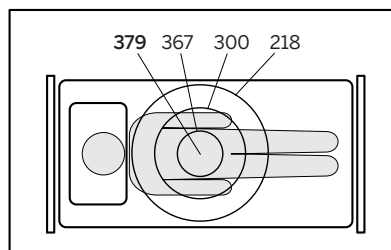
1. All lighting levels are expressed in average footcandles, with distances expressed in feet, as measured at the work plane (3'6")
2. The work plane (3'6") is defined as: examination bed height, plus patient body depth
3. Fixture is centered over examination bed with its longest axis parallel to the length of the bed

## Photometry from UL Verification Services, Allentown, PA

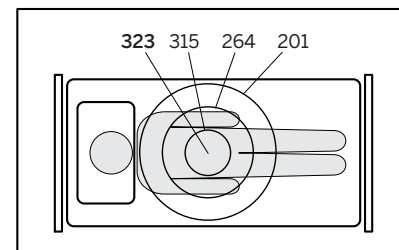
LM-79 IESNA Certified Photometry from Independent Lab



**Total System Watts 64.8**



fc on Task: 8' Ceiling 3'6" Work Plane



fc on Task: 8'6" Ceiling 3'6" Work Plane

\*LED manufacturers maintain a tolerance of +/-7% on flux (lumens) and power (electrical) measurements.

**▲ Cone of Light Key**  
 Dia. (in ft.) shown is where FC value is half the FC at nadir.

**Dist.** Distance (Ft.) from fixture  
**FC** Footcandles at nadir (0°)  
**Dia.** Circle of light at 50% of FC