

| | | |
|-----------|---------|---------|
| CATALOG # | TYPE | |
| JOB NAME | WATTAGE | VOLTAGE |

Lighting for Patient Spaces

Warming Light: For Critical Patient Care

Fully Recessed • Tempered Glass Lens
250W T4Q

Specifications

Lamp Assembly

- Designed for:
 - 1 vertical 250 watt (max.) frosted tungsten halogen T4Q lamp (by others)
- Double contact bayonet (DCB) base
- Rated 2000 Hour Rated Life
- Suitable for use with dimmer (by others) for variable temperature
- Voltage: 120V (50-60Hz)

Reflector

- Specular parabolic Alzak® aluminum

Trim Assembly

- White seamless tapered flare trim with regressed clear Fresnel borosilicate lens, rated up to 500°C
- Torsion springs retain snug fit to ceiling

Housing

- Cool; acrylic enameled 100% aluminum
- Rustproof: Exceeds 1000 hour ASTM 5% salt spray test
- Dissipates heat across entire surface area
- Entire luminaire visible and serviceable from below through removable trim assembly
- Built-in plaster flange

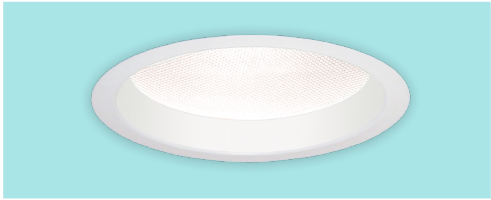
Outlet Box (Galvanized)

- Prewired 14 GA (NEC) galvanized steel, UL listed; with removable insulated cover
- ½" and ¾" knockouts

Installation & Hardware

- 27" galvanized hanger bars & adjusting brackets (2) supplied
- Compatible with fire rated enclosures (by others)

MRR-09742



- Lightweight; recesses in any ceiling type
- Thermal Protection (Per Current NEC)**
- Thermal protector included which provides automatic cut-off if rated temperature is exceeded

UL, C-UL (Canada) Listings

- Wet, damp or dry locations, covered ceilings
- Through-branch circuit conductors (up to 6 #12); supply wire rating: 90°C

THREE YEAR Limited Warranty

- Complete standard fixture



Options and Ordering Configuration

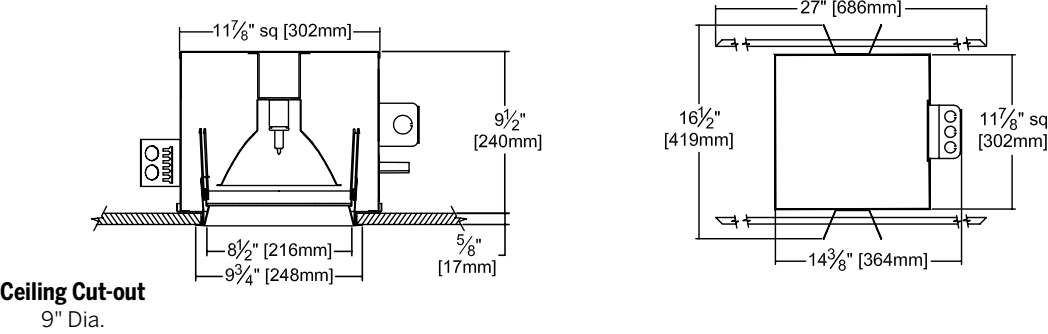
(Example: MRR-09742-46)

| Must Specify | | |
|--------------|---|---|
| Model | Lens & Trim Options | Other Options |
| MRR-09742 | <p>(Blank): White seamless tapered flare trim with regressed clear Fresnel borosilicate lens</p> <p>-32: White trim extender; specify OD</p> <p>-45: Gasket between trim flange and ceiling</p> <p>-46: Gasket between lens and trim</p> <p>-94: Custom color; consult factory</p> | <p>(Blank): None</p> <p>Mounting</p> <p>-79: Extension collar; ceilings up to 2" thick</p> <p>Other Options</p> <p>-99: Special modification; consult factory</p> <p>-TA: Top access for servicing from above ceiling</p> |

Applications

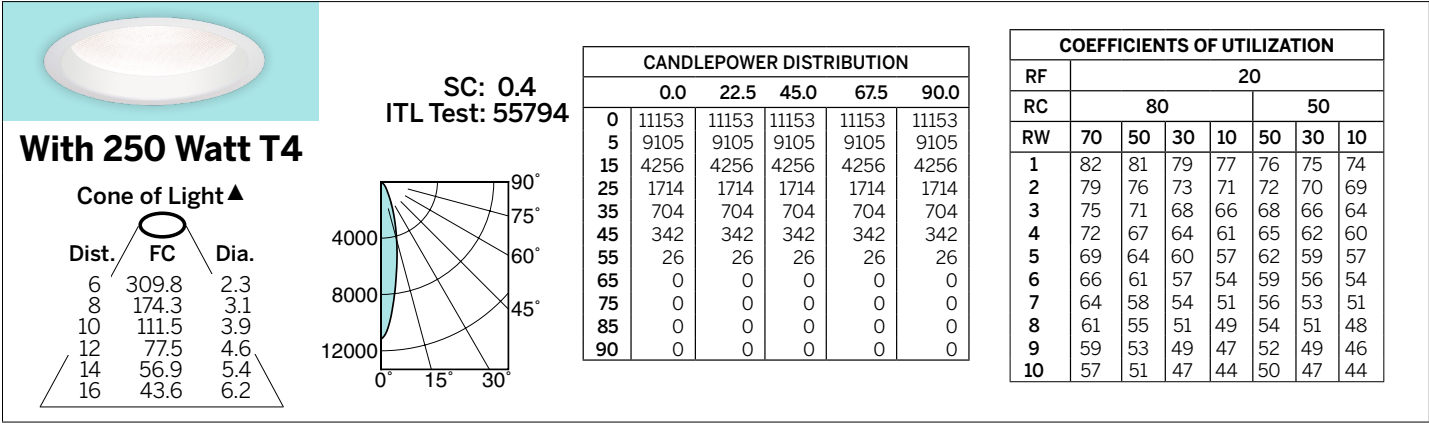
- OR/Cesarian
- Neonatal
- LDRP
- Burn/Trauma
- ICU/PICU
- Post-Op Recovery
- Timed Warming with Timer Systems

Dimensions



Photometry - Installed Complete Fixture

Photometry from I.T.L., Boulder, CO



Kirlin Recommends T4 Halogen Lamps by GE or Sylvania Only

▲ Cone of Light Key
Dia. (in ft.) shown is where FC value is half the FC at nadir.
Dist. Distance (Ft.) from fixture
FC Footcandles at nadir (0°)
Dia. Circle of light at 50% of FC

LIMITED WARRANTY: KIRLIN LIGHTING FIXTURES ARE WARRANTED FREE OF DEFECTS IN WORKMANSHIP OR MATERIAL FOR TWO YEARS FROM DATE OF PURCHASE. INSTALLATION TO N.E.C. IN NORMAL USE. Manufacturer at the option will replace or repair such fixture or refund the purchase price on presentation of proof of purchase and defective fixture at the offices of manufacturer within the years of Kirlin's warranty. Liability of manufacturer shall not be for any other damages, direct or indirect, sustained or suffered by purchaser or any person. This warranty is supplied to the buyer in place of all other warranties, expressed or implied. Seller does not warrant as to merchantability or fitness for a particular use, nor will any oral statement constitute a warranty or amend this specific warranty. Abnormal use, abuse of the fixture, improper installation, or repair or modification of the fixture without prior written authorization from the manufacturer will render the warranty void.

PATENT SPACES
April 2025