

CATALOG #	TYPE	
JOB NAME	WATTAGE	VOLTAGE

Lighting for Patient Spaces

Lensed 6" Wall Wash • LED

Up to 60,000 Hour Rated Life • Wet Location
LM-80 Qualified • LM-79 Certified Photometry

Specifications

Delivered System Performance*

- Nominal Lumens: **Must Specify**
 - Non-IC**
 - 5000L**
 - 3500L**
 - 2500L**
- Select trim & beam distribution: see chart
- Select color (CCT): see chart; 80+ CRI standard; Option -HC for 90+ (15% lumen loss)
- 60,000 Hour Rated Life (L70)
- Center beam optics positioned at 25°

Thermal Management System

- Aluminum heat sink and components for cool operation, long life, and low maintenance

LED Driver - INTERNAL

- Indoor/Outdoor: -30°C to 60°C (-22°F to 140°F)
- 0-10V CCR dimming standard (100-10%)
- Voltage Options: **Must Specify**
 - 120:** -120V (50-60Hz); load insensitive
 - 277:** -277V (50-60Hz); load insensitive

Trim Assembly

- Low brightness clear specular aluminum self-flanged angle cut cone with tempered prismatic glass above
- Optional colors and finishes available

Acrylic Enameled Aluminum Housing

- Rustproof and corrosion resistant: exceeds 1000 hour ASTM 5% salt spray test; all components fully sustainable
- Shallow depth fits restricted plenums
- Cool operation extends component life
- Modular design; visible and fully serviceable through aperture
- Built-in plaster flange

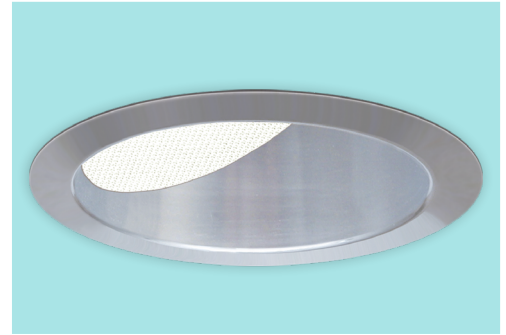
Outlet Box (Galvanized)

- UL listed J-box with insulated removable cover; prewired 14 GA (NEC) with 1/2" and 3/4" knockouts

Installation & Hardware

- Indoor/outdoor in ceilings up to 1 1/8" thick
- Compatible with fire rated enclosures (by others)

MRR-06810



- 27" galvanized hanger bars & adjusting brackets (2) supplied

UL, C-UL (Canada) Listings

- Wet, damp or dry locations, covered ceilings
- Through-branch conductors (4 #12 AWG 90°C)

IEC & FCC Compliance

- Meets IEC/EN 60601-1-2 electromagnetic compatibility standard for medical electrical equipment
- FCC Part 15 certified for EMI/RFI emissions

FIVE YEAR Limited Warranty

- Complete standard fixture

Options and Ordering Configuration

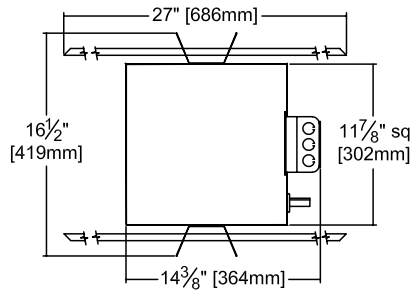
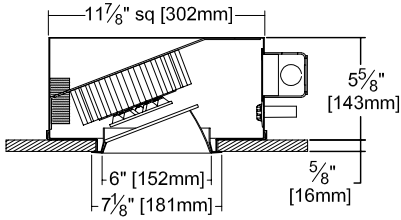
(Example: MRR-06810-2500L-277-50K-31-FS)



Must Specify			Optional				
Model	Lumens	Volts	CCT & CRI	Driver Options	Emergency Options	Lens & Trim Options	Other Options
MRR-06810	-5000L -3500L -2500L	-120 -277 -97†: Other voltage	(Blank): 3500K, 80+ CRI 80+ CRI -27K: 2700°K -30K: 3000°K -35K: 3500°K -41K: 4000°K -50K: 5000°K 90+ CRI -27K-HC: 2700°K -30K-HC: 3000°K -35K-HC: 3500°K -41K-HC: 4000°K -50K-HC: 5000°K	(Blank): Standard 0-10V CCR 10% dim -D1: 0-10V 1.0% dim -D2: 0-10V 0.1% dim -D3: DALI 1.0% dim -D4: DALI 100-0.1% dim -D5: DMX512A 0% dim -ECO: Digital driver for Lutron EcoSystem controls. Dims to 1% or consult factory; -3500L max	(Blank): None -EI: Remote emergency inverter for 50% of rated lumens (-5000L or -3500L); N/A for -2500L; 90+ minutes; 120V or 277V, 60Hz input only; specify voltage; N/A for option -FS -EM: Internal emergency battery pack; Delivers 500 lumens; CEC Compliant; 90+ minutes -ERH: Remote emergency battery pack; delivers 1000 lumens; CEC Compliant; 90+ minutes	(Blank): Clear specular aluminum self-flanged wall wash cone with prismatic glass above Trim Finishes -30: All white acrylic enameled trim -31: White acrylic enameled trim flange -70: SofTex™ semi-specular clear self-flanged cone -BG: BioGard™ anti-microbial white -BKBG: BioGard™ anti-microbial black -94: Custom color; consult factory -94BG: BioGard™ anti-microbial custom color finish Other Trim Features -32: White trim extender, specify OD -45: Gasket between trim flange and ceiling	(Blank): None -99: Special modification; consult factory -AWN: Athena Wireless Node; N/A for Dimming Options -D5, -ECO -FS: Fused primary; One per fixture; not for use with Option -EI *Note: For other integrated control solutions, such as nLight, contact factory

†Consult factory

Dimensions



Ceiling Cut-out
6 1/2" Dia.



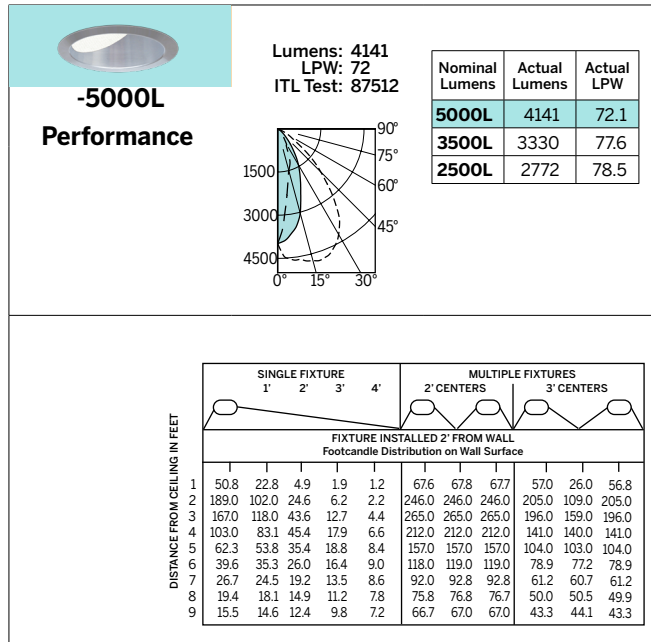
Performance Factors

NOMINAL LUMENS	LUMEN FACTOR	NOMINAL WATTS	LPW FACTOR
-5000L	1.00	57.4	1.00
-3500L	0.80	42.9	1.08
-2500L	0.67	35.2	1.09

Photometry - Installed Complete Fixture

Photometry from I.T.L., Boulder, CO

LM-79 IESNA Certified Photometry from Independent Lab



*LED manufacturers maintain a tolerance of +/-7% on flux (lumens) and power (electrical) measurements.

▲ Cone of Light Key Dist. Distance (Ft.) from fixture
Dia. (in ft.) shown is where FC FC Footcandles at nadir (0°)
value is half the FC at nadir. Dia. Circle of light at 50% of FC

LIMITED WARRANTY - CATALOGED KIRLIN FIXTURES ARE WARRANTED FREE OF DEFECTS IN WORKMANSHIP OR MATERIAL FOR FIVE YEARS FROM DATE OF PURCHASE. INSTALLED TO N.E.C. IN NORMAL USE. Manufacturer at the option will replace or repair such fixture or refund the purchase price on presentation of proof of purchase and defective fixture at the offices of manufacturer within ninety days of original shipment. Liability of manufacturer is limited to the foregoing, and manufacturer shall not be liable for any other damages, direct or indirect, sustained or suffered by purchaser or any person. This warranty is applicable to the buyer in place of all other warranties, expressed or implied. Seller does not warrant as to merchantability or fitness for a particular use, nor will any oral statement constitute a warranty or amend this specific warranty. Abnormal use, abuse of the fixture, improper installation or repair, or modification of the fixture without prior written authorization from the manufacturer will render the warranty void.

PATIENT SPACES
NOVEMBER 2024