

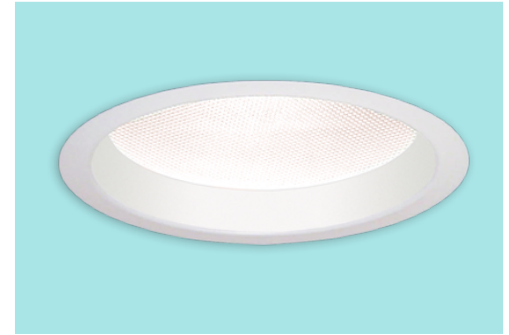
CATALOG #	TYPE	
JOB NAME	WATTAGE	VOLTAGE

Lighting for Patient Spaces

"Dead Front" 6" Shower Light

Up to 60,000 Hour Life • Wet Location
LM-80 Qualified • LM-79 Certified Photometry

MRR-06710



Specifications

Delivered System Performance*

- Lumen Series: **Must Specify**
-2500L (35W)
- Distribution: MFL standard;
optional: -NFL or -WFL
- Color temperature: 3500°K standard;
optional: -27K, -30K, -41K, or -50K
- CRI: 80+ standard.; optional: -HC (90+)
- 60,000 hour life (L70)
- Fully sustainable: removable for servicing

Thermal Protection: SPECIFY VOLTAGE

- Thermal protector for insulation detection per UL/NEC: must specify input voltage

Thermal Management System

- Aluminum heat sink and components for cool operation, long life, and low maintenance

LED Driver - INTERNAL

- Indoor/Outdoor: -30°C to 60°C (-22°F to 140°F)
- 0-10V CCR dimming standard (100-10%)
- Voltage Options: **Must Specify**
-120: -120V (50-60Hz); load insensitive
-277: -277V (50-60Hz); load insensitive

Trim Assembly

- Electrically isolated "dead front" gasketed trim
- Seamless tapered rustproof aluminum; self-flanged with white finish (field paintable)
- Regressed tempered prismatic spread lens

Acrylic Enameled Aluminum Housing

- Rustproof: exceeds 1000 hour ASTM 5% salt spray test; all components fully sustainable
- Shallow depth fits restricted plenums
- Cool operation extends component life
- Modular design; visible and fully serviceable through aperture
- Built-in plaster flange

Outlet Box (Galvanized)

- UL Listed, 14GA, insulated, removable cover
- 1/2" and 3/4" knockouts

Installation & Hardware

- Indoor/outdoor in ceilings up to 1 1/8" thick
- Compatible with fire rated enclosures (by others)
- 27" galvanized hanger bars & adjusting brackets (2) supplied

UL, C-UL (Canada) Listings

- Wet, damp or dry locations, covered ceilings
- Through-branch conductors (4 #12 AWG 90°C)

IEC & FCC Compliance

- Meets IEC/EN 60601-1-2 electromagnetic compatibility standard for medical electrical equipment
- FCC Part 15 certified for EMI/RFI emissions

FIVE YEAR Limited Warranty

- Complete standard fixture



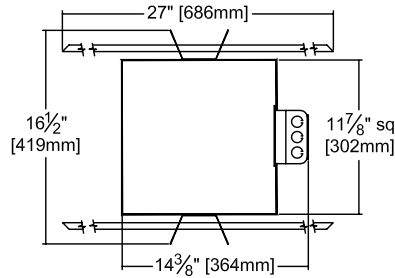
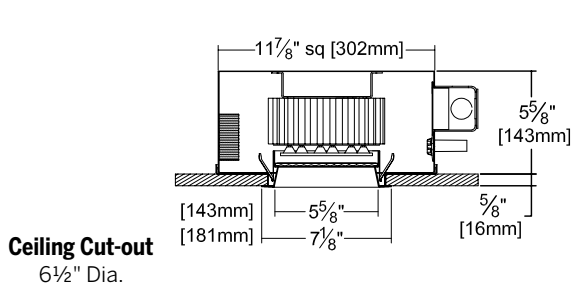
Options and Ordering Configuration

(Example: MRR-06710-2500L-120-30K-NFL)

Must Specify			Optional				
Model	Lumens	Volts	CCT & CRI	Beam	Driver Options	Lens & Trim Options	Other Options
MRR-06710	-2500L	-120 -277 -97: Other voltage; consult factory	(Blank): 35K, 80+ CRI 80+ CRI -27K: 2700°K -30K: 3000°K -35K: 3500°K -41K: 4000°K -50K: 5000°K 90+ CRI -27K-HC: 2700°K -30K-HC: 3000°K -35K-HC: 3500°K -41K-HC: 4000°K -50K-HC: 5000°K	(Blank): MFL -NFL -WFL	(Blank): Standard 0-10V CCR 10% dim -D1: 0-10V 1.0% dim -D2: 0-10V 0.1% dim -D3: DALI 1.0% dim -D4: DALI 100-0.1% dim -D5: DMX512A 0.1% dim	(Blank): White trim, regressed prismatic lens Trim Finishes -62T: Clear specular trim instead -BG: BioGard™ anti-microbial white -BKBG: BioGard™ anti-microbial black -94: Custom color; consult factory -94BG: BioGard™ anti-microbial custom color finish Other Trim Features -32: White trim extender; specify OD Lens Options -13: .125" clear poly. lens overlay -23: Frosted microprismatic lens -CF: Custom color filter (Rosco); specify -WA: White acrylic (flat) diffuser instead; will produce wide flood distribution	(Blank): None Mounting -79: Extension collar; ceilings up to 2" thick Other Options -99: Special modification; consult factory -FS: Fused primary; One per fixture

*See note next page

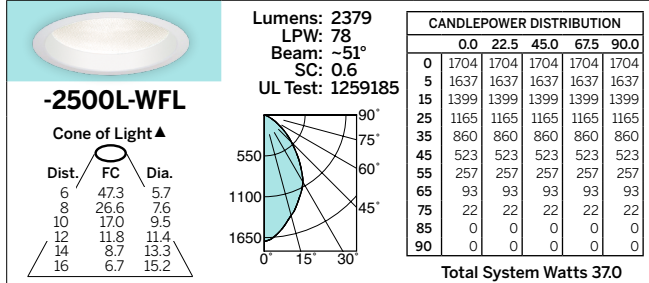
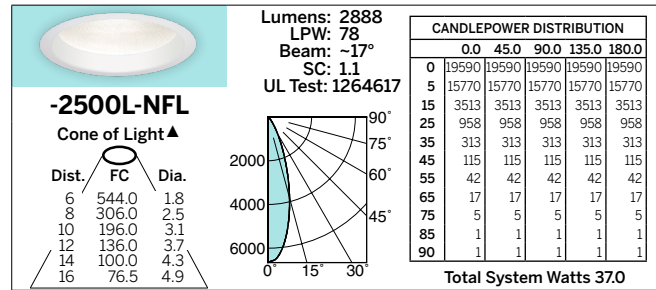
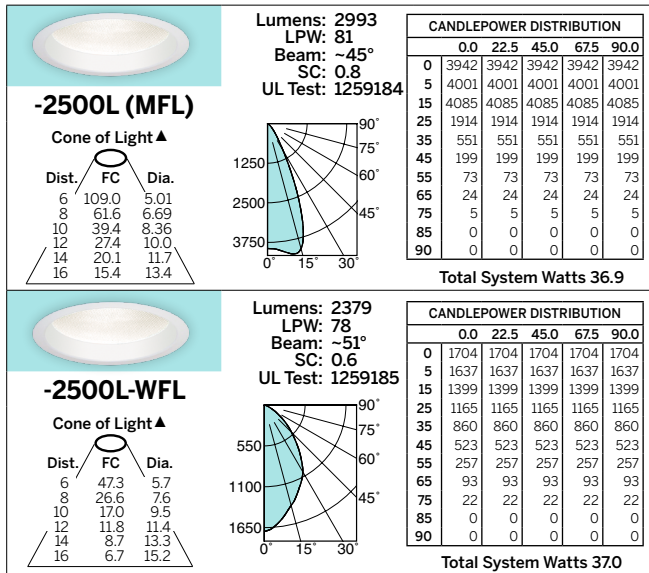
Dimensions



Photometry - Installed Complete Fixture

Photometry from UL Verification Services, Allentown, PA

LM-79 IESNA Certified Photometry from Independent Lab



*LED manufacturers maintain a tolerance of +/-7% on flux (lumens) and power (electrical) measurements.

▲ Cone of Light Key
Dist. Distance (Ft.) from fixture
Dia. (in ft.) shown is where FC value is half the FC at nadir.
FC Footcandles at nadir (0°)
Dia. Circle of light at 50% of FC

LIMITED WARRANTY: KIRLIN LIGHTING FIXTURES ARE WARRANTED FREE OF DEFECTS IN WORKMANSHIP OR MATERIAL FOR A PERIOD OF FIVE (5) YEARS FROM DATE OF PURCHASE. INSTALLATION MUST BE BY A QUALIFIED PROFESSIONAL. THE WARRANTY IS VOID IF THE FIXTURE IS NOT INSTALLED IN ACCORDANCE WITH THE INSTALLATION INSTRUCTIONS. THE WARRANTY DOES NOT COVER DAMAGE TO THE FIXTURE OR TO THE SURFACE IT IS MOUNTED ON. THE WARRANTY IS VOID IF THE FIXTURE IS USED IN A MANNER NOT INTENDED BY THE MANUFACTURER. THE WARRANTY IS VOID IF THE FIXTURE IS USED IN A MANNER THAT IS NOT APPROVED BY THE MANUFACTURER. THE WARRANTY IS VOID IF THE FIXTURE IS USED IN A MANNER THAT IS NOT APPROVED BY THE MANUFACTURER. THE WARRANTY IS VOID IF THE FIXTURE IS USED IN A MANNER THAT IS NOT APPROVED BY THE MANUFACTURER.

PATENT SPACES
NOVEMBER 2024