

CATALOG #	TYPE	
JOB NAME	WATTAGE	VOLTAGE

# SmartLED™ MRI Lighting System

## 6" Open Appearance Adjustable

Up to 60,000 Hour Life • Type IC

LM-80 Qualified • LM-79 Certified Photometry

### Specifications

#### Delivered System Performance

- Lumens: **-2500L** (35W); 2500 nominal lumens
- Distribution: NFL standard; optional: -SPT, or -MFL
- Color temperature: 3500°K standard; optional: -27K, -30K, -41K, or -50K
- CRI: 80+ standard; optional: -HC (90+)
- 60,000 hour life (L70)
- Fully sustainable: removable for servicing

#### Thermal Management System

- Aluminum heat sink and components for cool operation, long life, and low maintenance

#### Center Beam Optics

- Tilts up to 35°
- Rotates full 365° and locks in place
- Accommodates sloped ceilings up to 35°

#### SmartLED™ MRI Lighting System Required

- Kirlin remote driver modules, cabinet, and RFI filters required for operation
- Components ordered separately, see below for driver information and **MRI-CABNT** for additional components

- The **MRI Configurator** can help determine the necessary components
- SmartLED driver modules provide 0-10V dimming to 0.38%

#### SmartLED™ Emergency Backup System

- **EMI-21220** or **EMI-03120** available for emergency power
- See specification sheet; order separately

#### Trim and Lens Assembly

- Clear specular aluminum self-flanged, low glare cone with lens above
- Optional colors and finishes available

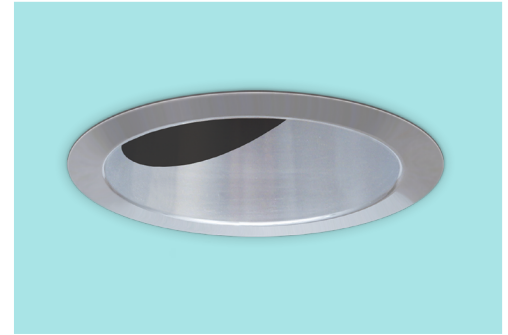
#### Acrylic Enameled Aluminum Housing

- Rustproof and corrosion resistant: exceeds 1000 hour ASTM 5% salt spray test; all components fully sustainable
- Shallow depth for restricted plenums
- Cool operation extends component life
- Modular design; visible and fully serviceable through aperture
- Built-in plaster flange

#### Outlet Box (Aluminum)

- UL listed J-box; wired with ½" knockouts

# MRR-06422



#### Installation & Hardware

- Requires minimum 18 AWG twisted pair shielded wire from SmartLED™ MRI Lighting System to fixtures
- Recesses in ceilings up to 1-1/8" thick
- Aluminum 27" hanger bars with adjustable mounting brackets (2) supplied.

#### UL, C-UL (Canada) Listings

- Wet, damp or dry locations, covered ceilings
- Type IC: for direct contact with insulation

#### IEC & FCC Compliance

- FCC Part 15 certified for EMI/RFI emissions

#### FIVE YEAR Limited Warranty

- Complete fixture, must be installed with all SmartLED™ components

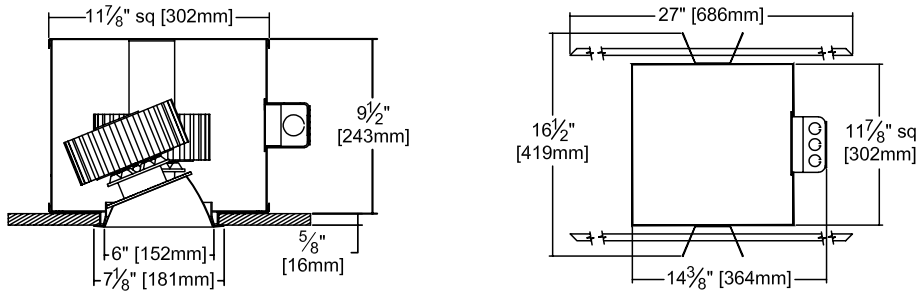
## Options and Ordering Configuration

(Example: MRR-06422-2500L-30K-MFL)

Must Specify		Optional			
Model	Lumens	CCT & CRI	Beam	Trim & Lens Options	Other Options
MRR-06422	-2500L	(Blank): 35K, 80+ CRI	(Blank): NFL	(Blank): Clear specular aluminum self-flanged cone with lens above	(Blank): None
		<b>80+ CRI</b>	<b>-SPT</b>	<b>Trim Finishes</b>	<b>Other Options</b>
		-27K: 2700°K	-NFL	-30T: All white acrylic enameled cone	-99: Special modification; consult factory
		-30K: 3000°K	-MFL	-30F: White acrylic enameled cone flange	
		-35K: 3500°K		-70T: SofTex™ semi-specular clear self-flanged cone	
		-41K: 4000°K		-BGT: BioGard anti-microbial white	
		-50K: 5000°K		-BKBG: BioGard anti-microbial black	
		<b>90+ CRI</b>		-94: Custom color; consult factory	
		-27K-HC: 2700°K		-94BG: BioGard anti-microbial custom color finish	
		-30K-HC: 3000°K		<b>Other Trim Features</b>	
		-35K-HC: 3500°K		-32: White trim extender, specify OD	
		-41K-HC: 4000°K		-45: Gasket between trim flange and ceiling	
		-50K-HC: 5000°K		<b>Lens Options</b>	
				-WA: White acrylic (flat) diffuser instead; will produce wide flood distribution	



## Dimensions

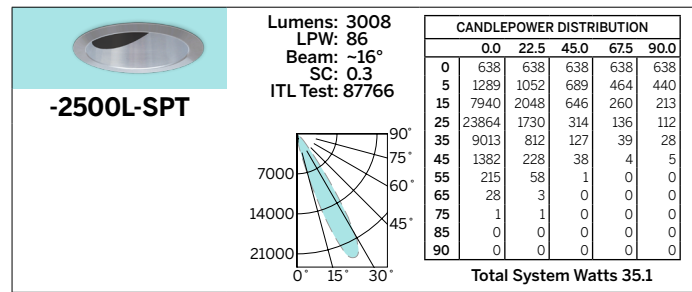
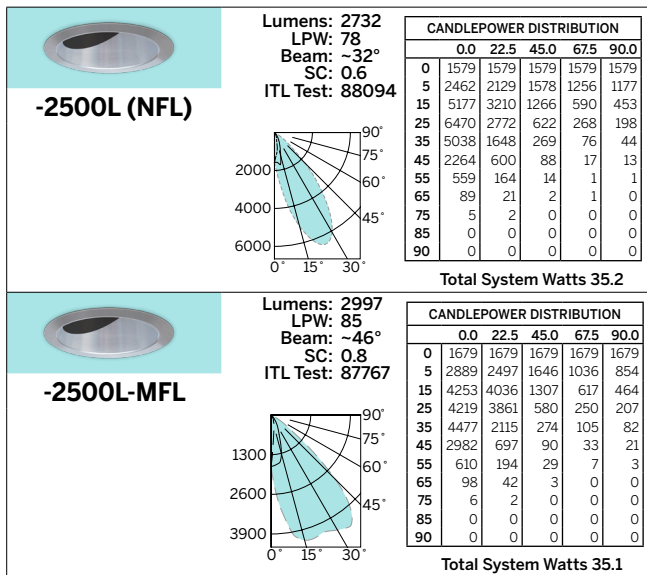


**Ceiling Cut-out**  
6 1/2" Dia.

## Photometry - Installed Complete Fixture

Photometry from I.T.L., Boulder, CO

LM-79 IESNA Certified Photometry from Independent Lab



\*LED manufacturers maintain a tolerance of +/-7% on flux (lumens) and power (electrical) measurements.

## SmartLED™ MRI Driver Modules

Fully Digital Controlled Power Source for LED Luminaires

Mounted in Kirlin's **MRI-CABNT**

Drivers wired in series



Driver Module	Maximum Capacity	Fixture Load Example
DVR-1400A	Qty 1: 2500L Luminaire	• Qty 1: MRR-06422-2500L
DVR-1400B	Up to Qty 2: 2500L Luminaire	• Qty 2: MRR-06422-2500L • Qty 1: MRR-06422-2500L and Qty 1: MRR-06420-2500L

LIMITED WARRANTY: CATALOGED KIRLIN FIXTURES ARE WARRANTED FREE OF DEFECTS IN WORKMANSHIP OR MATERIAL FOR 5 YEARS FROM DATE OF PURCHASE. INSTALLED TO N.E.C. IN NORMAL USE. Manufacturer at the option will replace or repair such fixture or refund the purchase price on presentation of proof of purchase and defective fixture at the offices of manufacturer within the warranty period. This warranty is void if the fixture is not installed in accordance with the manufacturer's instructions. Seller does not warrant as to merchantability or fitness for a particular use, nor will any oral statement constitute a warranty or amend this specific warranty. Abnormal use, abuse of the fixture, improper installation, or repair or modification of the fixture without prior written authorization from the manufacturer will render the warranty void.

SmartLED MRI  
OCTOBER 2024