

CATALOG #	TYPE	
JOB NAME	WATTAGE	VOLTAGE

SmartLED™ MRI Lighting System

6" Lensed Wall Wash

Up to 90,000 Hour Life • Type IC

LM-80 Qualified • LM-79 Certified Photometry

Specifications

Delivered System Performance

- Lumens: **-1500L** (20W); 1500 nominal lumens
- Color temperature: 3500°K standard; optional: -27K, -30K, -41K, or -50K
- CRI: 80+ standard; optional: -HC (90+)
- 90,000 hour life (L70**)
- Fully sustainable: removable for servicing
- Center beam optics positioned at 20°

Thermal Management System

- Aluminum heat sink and components for cool operation, long life, and low maintenance

SmartLED™ MRI Lighting System Required

- Kirlin remote driver modules, cabinet, and RFI filters required for operation
- Components ordered separately, see below for driver information and **MRI-CABNT** for additional components
- The **MRI Configurator** can help determine the necessary components
- SmartLED driver modules provide 0-10V dimming to 0.38%

SmartLED™ Emergency Backup System

- EMI-21220** or **EMI-03120** available for emergency power
- See specification sheet; order separately

Trim and Lens Assembly

- Clear specular aluminum self-flanged, low glare cone with lens above
- Optional colors and finishes available

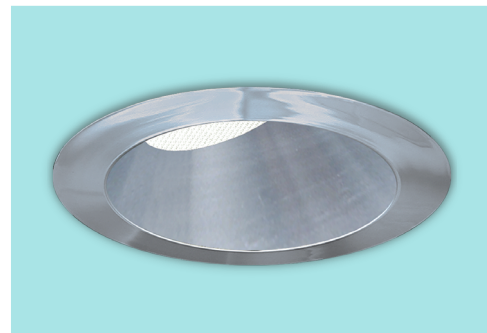
Acrylic Enameled Aluminum Housing

- Rustproof and corrosion resistant: exceeds 1000 hour ASTM 5% salt spray test; all components fully sustainable
- Shallow depth for restricted plenums
- Cool operation extends component life
- Modular design; visible and fully serviceable through aperture
- Built-in plaster flange

Outlet Box (Aluminum)

- UL listed J-box; prewired with ½" knockouts

MRR-06227



Installation & Hardware

- Requires minimum 18 AWG twisted pair shielded wire from SmartLED™ MRI Lighting System to fixtures
- Recesses in ceilings up to 1-1/8" thick
- Aluminum 27" hanger bars with adjustable mounting brackets (2) supplied.

UL, C-UL (Canada) Listings

- Wet, damp or dry locations, covered ceilings
- Type IC: for direct contact with insulation

IEC & FCC Compliance

- FCC Part 15 certified for EMI/RFI emissions

FIVE YEAR Limited Warranty

- Complete fixture, must be installed with all SmartLED™ components

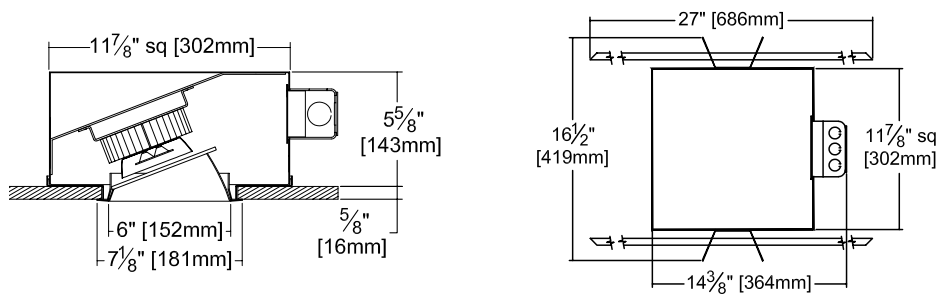


Options and Ordering Configuration

(Example: MRR-06227-1500L-30K-BGT)

Must Specify		Optional			
Model	Lumens	CCT & CRI	Trim & Lens Options	Other Options	
MRR-06227					
*See note next page	-1500L	(Blank): 35K, 80+ CRI	(Blank): Clear specular aluminum self-flanged cone with lens above	(Blank): None	
		80+ CRI	Trim Finishes	Other Options	
		-27K: 2700°K	-30T: All white acrylic enameled cone	-99: Special modification; consult factory	
		-30K: 3000°K	-30F: White acrylic enameled cone flange		
		-35K: 3500°K	-70T: SofTex™ semi-specular clear self-flanged cone		
		-41K: 4000°K	-BGT: BioGard anti-microbial white		
		-50K: 5000°K	-BKBG: BioGard anti-microbial black		
		90+ CRI	-94: Custom color; consult factory		
		-27K-HC: 2700°K	-94BG: BioGard anti-microbial custom color finish		
		-30K-HC: 3000°K	Other Trim Features		
		-35K-HC: 3500°K	-32: White trim extender, specify OD		
		-41K-HC: 4000°K	-45: Gasket between trim flange and ceiling		
		-50K-HC: 5000°K			
		Projected L70** for Kirlin Luminaires			
		In Open Plenum	90,000 hours		
In Insulation (Type IC)	60,000 hours				
**Hours at 70% lumen maintenance					

Dimensions



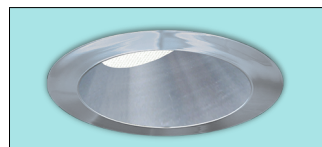
Ceiling Cut-out

6½" Dia.

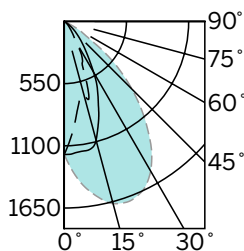
Photometry - Installed Complete Fixture

Photometry from I.T.L., Boulder, CO

LM-79 IESNA Certified Photometry from Independent Lab






-1500L



WALL > 0°
 90°
 — 180°

Lumens: 1508
LPW: 72
ITL Test: 87517

DISTANCE FROM CEILING IN FEET	SINGLE FIXTURE					MULTIPLE FIXTURES						
	1'	2'	3'	4'		2' CENTERS			3' CENTERS			
												
	FIXTURE INSTALLED 2' FROM WALL											
	Footcandle Distribution on Wall Surface											
	1	10.6	3.4	1.1	0.7	0.4	15.5	15.6	15.5	12.9	5.1	12.8
	2	75.6	42.9	9.6	1.7	0.6	97.5	97.6	97.5	79.0	45.2	79.0
	3	60.2	43.0	17.1	5.3	1.5	98.3	98.4	98.4	72.0	58.7	71.9
	4	36.8	29.9	16.1	6.8	2.7	76.2	76.3	76.3	51.5	50.2	51.5
	5	22.1	19.5	12.7	6.6	3.1	56.2	56.2	56.2	37.0	37.7	37.0
6	14.0	12.7	9.5	5.8	3.2	42.7	42.8	42.7	28.2	28.2	28.2	
7	9.4	9.5	7.1	4.9	3.0	33.2	33.5	33.5	22.0	22.0	22.0	
8	6.8	7.1	5.5	4.1	2.8	27.3	27.7	27.7	18.0	18.2	18.0	
9	5.3	5.1	4.5	3.6	2.6	23.9	24.0	4.0	15.5	15.9	15.5	

Total System Watts 21.0

*LED manufacturers maintain a tolerance of +/-7% on flux (lumens) and power (electrical) measurements.

SmartLED™ MRI Driver Modules

Fully Digital Controlled Power Source for LED Luminaires

Mounted in Kirlin's **MRI-CABNT**

Drivers wired in series



Driver Module	Maximum Capacity	Fixture Load Examples
DVR-1400A	Up to Qty 2: 1500L Luminaires	<ul style="list-style-type: none"> Qty 1: MRR-06227-1500L Qty 2: MRR-06227-1500L
		<ul style="list-style-type: none"> Qty 1: MRR-06205-1500L and Qty 1: MRR-06227-1500L