

CATALOG #	TYPE	
JOB NAME	WATTAGE	VOLTAGE

SmartLED™ MRI Lighting System

6" Open Appearance Adjustable

Up to 90,000 Hour Life • Type IC

LM-80 Qualified • LM-79 Certified Photometry

Specifications

Delivered System Performance

- Lumens: **-1500L** (20W); 1500 nominal lumens
- Distribution: NFL standard; optional: -SPT, or -MFL
- Color temperature: 3500°K standard; optional: -27K, -30K, -41K, or -50K
- CRI: 80+ standard; optional: -HC (90+)
- 90,000 hour life (L70**)
- Fully sustainable: removable for servicing

Thermal Management System

- Aluminum heat sink and components for cool operation, long life, and low maintenance

Center Beam Optics

- Tilts up to 45°
- Rotates full 365° and locks in place
- Accommodates sloped ceilings up to 45°

SmartLED™ MRI Lighting System Required

- Kirlin remote driver modules, cabinet, and RFI filters required for operation
- Components ordered separately, see below for driver information and **MRI-CABNT** for additional components

- The **MRI Configurator** can help determine the necessary components SmartLED driver modules provide 0-10V dimming to 0.38%

SmartLED™ Emergency Backup System

- **EMI-21220** or **EMI-03120** available for emergency power
- See specification sheet; order separately

Trim and Lens Assembly

- Clear specular aluminum self-flanged, low glare cone with lens above
- Optional colors and finishes available

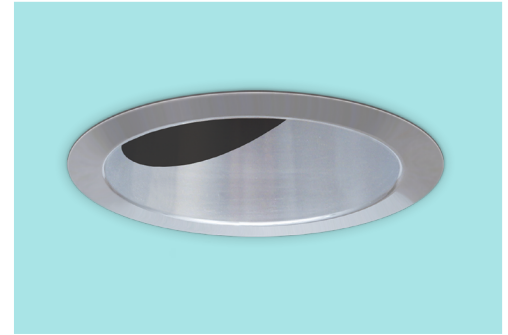
Acrylic Enameled Aluminum Housing

- Rustproof and corrosion resistant: exceeds 1000 hour ASTM 5% salt spray test; all components fully sustainable
- Shallow depth for restricted plenums
- Cool operation extends component life
- Modular design; visible and fully serviceable through aperture
- Built-in plaster flange

Outlet Box (Aluminum)

- UL listed J-box; prewired with ½" knockouts

MRR-06222



Installation & Hardware

- Requires minimum 18 AWG twisted pair shielded wire from SmartLED™ MRI Lighting System to fixtures
- Recesses in ceilings up to 1-1/8" thick
- Aluminum 27" hanger bars with adjustable mounting brackets (2) supplied.

UL, C-UL (Canada) Listings

- Wet, damp or dry locations, covered ceilings
- Type IC: for direct contact with insulation

IEC & FCC Compliance

- FCC Part 15 certified for EMI/RFI emissions

FIVE YEAR Limited Warranty

- Complete fixture, must be installed with all SmartLED™ components



Options and Ordering Configuration

(Example: MRR-06222-1500L-30K-MFL)

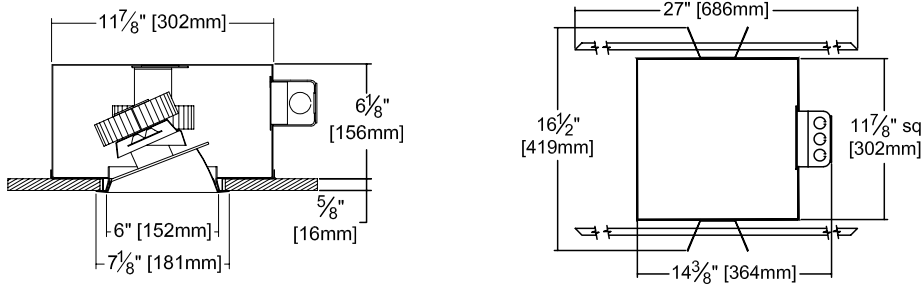
Must Specify		Optional			
Model	Lumens	CCT & CRI	Beam	Trim & Lens Options	Other Options
MRR-06222					
	-1500L	(Blank): 35K, 80+ CRI	(Blank): NFL	(Blank): Clear specular aluminum self-flanged cone with lens above	(Blank): None
		80+ CRI	-SPT	Trim Finishes	Other Options
		-27K: 2700°K	-NFL	-30T: All white acrylic enameled cone	-99: Special modification; consult factory
		-30K: 3000°K	-MFL	-30F: White acrylic enameled cone flange	
		-35K: 3500°K		-70T: SofTex™ semi-specular clear self-flanged cone	
		-41K: 4000°K		-BGT: BioGard anti-microbial white	
		-50K: 5000°K		-BKBG: BioGard anti-microbial black	
		90+ CRI		-94: Custom color; consult factory	
		-27K-HC: 2700°K		-94BG: BioGard anti-microbial custom color finish	
		-30K-HC: 3000°K		Other Trim Features	
		-35K-HC: 3500°K		-32: White trim extender, specify OD	
		-41K-HC: 4000°K		-45: Gasket between trim flange and ceiling	
		-50K-HC: 5000°K		Lens Options	
				-WA: White acrylic (flat) diffuser instead; will produce wide flood distribution	

*See note next page

Projected L70** for Kirlin Luminaires	
In Open Plenum	90,000 hours
In Insulation (Type IC)	60,000 hours

**Hours at 70% lumen maintenance

Dimensions



Ceiling Cut-out
6 1/2" Dia.

Photometry - Installed Complete Fixture

Photometry from I.T.L., Boulder, CO

LM-79 IESNA Certified Photometry from Independent Lab

