

CATALOG #	TYPE	
JOB NAME	WATTAGE	VOLTAGE

MRR-05825-2500L



Lighting for Patient Spaces

Super Shallow Lensed 5" Downlight • LED

Up to 90,000 Hour Life • Type IC • Wet Location • Wide Flood
LM-80 Qualified • LM-79 Certified Photometry

Specifications

Delivered System Performance*

- Lumen Series: Must Specify
- 2500L: 2500 nominal lumens (35W).
- Distribution: WFL standard.
- Color temperature: 3500°K standard. Optional: -27K, -30K, -41K or -50K.
- CRI: 80+ standard. Optional: -HC (90+).
- 60,000 hour life (L70).
- Fully sustainable: removable for servicing.

Thermal Protection: SPECIFY VOLTAGE

- Thermal protector for insulation detection per UL/NEC. Must specify input voltage.

Thermal Management System

- All aluminum heat sink, components and housing maximize cool operation and long life while minimizing maintenance.

LED Power Supply - INTERNAL

- Suitable for outdoor / indoor use: -30°C (-22°F) to 60°C (140°F).
- 120-277V / 50-60Hz standard. Load insensitive.
- 0-10V CCR dimming standard. (100-10%)

Trim Assembly - Fully Gasketed

- High efficiency reflector.
- Frosted micropismatic tempered lens at ceiling; or see Options.
- White flat seamless aluminum, one piece self-flanged trim (field paintable).

Acrylic Enameled Aluminum Housing: Super Shallow Depth

- Rustproof and corrosion resistant: Exceeds 1000 hour ASTM 5% salt spray test.
- Shallow depth fits restricted plenums.
- Cool operation: Extends life of all components.
- Fully sustainable: Entire luminaire, including LED light engine, easily visible and serviced through aperture.
- Built-in plaster flange.

Outlet Box

- UL listed J-box with removable cover. Prewired 14 GA (NEC) with eight ½" knockouts.

Installation

- Recesses indoor/outdoor in covered locations.
- Accommodates ceilings up to 1-1/8" thick.
- Compatible with fire rated enclosures (by others).
- 27" galvanized hanger bars with adjustable mounting brackets (2) supplied.

UL, C-UL (Canada) Listings

- Wet, damp or dry locations, covered ceilings.
- Type IC: for direct contact with insulation.
- Through-branch conductors (4 #12 AWG 90°C) for Type IC Listing.

IEC & FCC Compliance

- Meets IEC/EN 60601-1-2 electromagnetic compatibility standard for medical electrical equipment.
- FCC Part 15 certified for EMI/RFI emissions.

FIVE YEAR Limited Warranty

- Complete standard fixture.

MUST SPECIFY	OPTIONAL		Ordering Example: MRR-05825-2500L-120-30K-94
Product Number	Voltage	Options	
MRR-05825-2500L	-120 (120 volts) -277 (277 volts) -97 (Specify other)	See "Options" below	

Options

Input Power: SPECIFY

- 120 120V (50-60Hz) input for thermal protector.
- 277 277V (50-60Hz) input for thermal protector.
- 97 Specify other voltage. Consult factory.

LED Power Supply

- D1 0-10V 1.0% dimming instead.
- ECO Digital driver for Lutron EcoSystem controls. Dims to 1% or consult factory.
- ERH REMOTE emergency battery pack. Delivers 1000 lumens. Run time: 90+ minutes. CEC compliant.

Color Temperature (CCT)

- 27K Color temperature 2700°K instead.
- 30K Color temperature 3000°K instead.
- 41K Color temperature 4100°K instead.
- 50K Color temperature 5000°K instead.
- HC 90+ CRI instead. Consult factory.

Lens and Trim

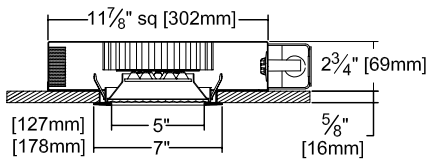
- 17 Prismatic high strength acrylic lens instead.
- 32 White oversize trim ring. Specify O.D.
- 33 Tempered glass Glow Ring suspended beneath trim; shape matches reflector
- 35T Silver enameled trim (complete).
- 37T Dark bronze enamel (complete trim).
- 38T Black enamel (complete trim).
- 94 Custom color/finish. Specify. Consult factory.

- BG Anti-microbial Kirlin BioGard™ white (only) trim finish.
- DF Electrically isolated "dead front" gasketed trim.
- WA White acrylic (flat) diffuser instead; WFL.

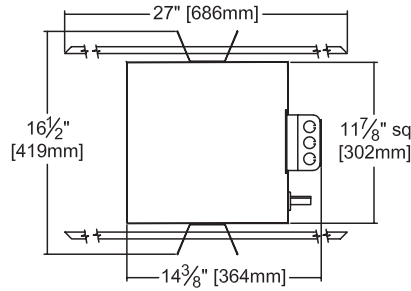
Other

- 99 Special modification. Consult factory.
- FS Single in-line fuse.

Dimensions



Ceiling Cut-out
6 1/2" Dia.



Detailed Photometry - Installed Fixture

Photometric testing done in accordance with IESNA LM-79

Photometry from UL Verification Services, Allentown, PA

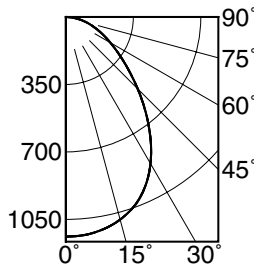
-2500L STANDARD (WFL)

Lumens: 2409
Beam: ~60°
SC: 1.2
LPW: 66
Efficiency: 66.6%
UL Test: 1259182



Cone of Light ▲

Dist.	FC	Dia.
6	31.6	6.9
8	17.8	9.3
10	11.4	11.3
12	7.9	13.9
14	5.8	16.2
16	4.5	18.5



Total System Watts 36.8

	CANDLEPOWER DISTRIBUTION				
	0.0	22.5	45.0	67.5	90.0
0	1139	1139	1139	1139	1139
5	1135	1135	1135	1135	1135
15	1118	1118	1118	1118	1118
25	972	972	972	972	972
35	765	765	765	765	765
45	527	527	527	527	527
55	336	336	336	336	336
65	209	209	209	209	209
75	114	114	114	114	114
85	30	30	30	30	30
90	2	2	2	2	2

LM-80 Qualified • LM-79 Certified Photometry

* LED manufacturers maintain a tolerance of ±7% on flux (lumens) and power (electrical) measurements. Kirlin photometrics are actual test data from UL Verification Services (UL) where photometry was measured from 3616 lumen (~2500L) light engines (within the established tolerance).

▲ Cone of Light Key

Dia. (in ft.) shown is where FC value is half the FC at nadir.

Dist. Distance (Ft.) from fixture

FC Footcandles at nadir (0°)
Dia. Circle of light at 50% of FC

LIMITED WARRANTY: CATALOGED KIRLIN FIXTURES ARE WARRANTED FREE OF DEFECTS IN WORKMANSHIP OR MATERIAL FOR FIVE YEARS FROM DATE OF PURCHASE. INSTALLATION TO N.E.C. IN NORMAL USE. Manufacturer at the option will replace or repair such fixture or refund the purchase price on presentation of proof of purchase and defective fixture at the offices of manufacturer within five years of original shipment. Liability of manufacturer is limited to the foregoing, and manufacturer shall not be liable for any other damages, direct or indirect, sustained or suffered by purchaser or any person. This warranty is supplied in place of all other warranties, expressed or implied. Seller does not warrant as to merchantability or fitness for a particular use, nor will any oral statement constitute a warranty or amend this specific warranty. Abnormal use, abuse of the fixture, improper installation, or repair, or modification of the fixture without prior written authorization from the manufacturer will render the warranty void.