

|           |         |         |
|-----------|---------|---------|
| CATALOG # | TYPE    |         |
| JOB NAME  | WATTAGE | VOLTAGE |

# Lighting for Patient Spaces

## Super Shallow "Dead Front" 5" Shower Light

Up to 60,000 Hour Rated Life • Wet Location  
LM-80 Qualified • LM-79 Certified Photometry

### Specifications

#### Delivered System Performance\*

- Lumen Series: **Must Specify**  
**-2500L** (35W)
- Distribution: MFL standard
- Color temperature: 3500°K standard; optional: -27K, -30K, -41K, or -50K
- CRI: 80+ standard; optional: -HC (90+)
- 60,000 Hour Rated Life (L70)
- Fully sustainable: removable for servicing

#### Thermal Protection: SPECIFY VOLTAGE

- Thermal protector for insulation detection per UL/NEC: must specify input voltage

#### Thermal Management System

- Aluminum heat sink and components for cool operation, long life, and low maintenance

#### LED Driver - INTERNAL

- Indoor/Outdoor: -30°C to 60°C (-22°F to 140°F)
- 0-10V CCR dimming standard (100-10%)
- Voltage Options: **Must Specify**  
**-120:** -120V (50-60Hz); load insensitive  
**-277:** -277V (50-60Hz); load insensitive

#### Trim Assembly

- Electrically isolated "dead front" gasketed trim
- Seamless tapered rustproof aluminum; self-flanged with white finish (field paintable)
- Regressed tempered prismatic spread lens

#### Acrylic Enameled Aluminum Housing: Super Shallow Depth

- Rustproof: exceeds 1000 hour ASTM 5% salt spray test; all components fully sustainable
- Shallow depth fits restricted plenums
- Cool operation extends component life
- Modular design; visible and fully serviceable through aperture
- Built-in plaster flange

#### Outlet Box (Galvanized)

- UL Listed, 14GA, insulated, removable cover
- ½" and ¾" knockouts

#### Installation & Hardware

- Indoor/outdoor in ceilings up to 1½" thick
- Compatible with fire rated enclosures (by others)

## MRR-05725



- 27" galvanized hanger bars & adjusting brackets (2) supplied

#### UL, C-UL (Canada) Listings

- Wet, damp or dry locations, covered ceilings
- Through-branch conductors (4 #12 AWG 90°C)

#### IEC & FCC Compliance

- Meets IEC/EN 60601-1-2 electromagnetic compatibility standard for medical electrical equipment
- FCC Part 15 certified for EMI/RFI emissions

#### FIVE YEAR Limited Warranty

- Complete standard fixture

## Options and Ordering Configuration

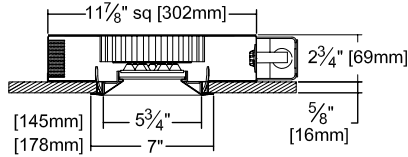
(Example: MRR-05725-2500L-120-30K-79)



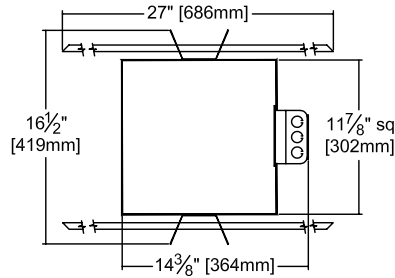
| Must Specify |        |   | Optional   |  |   |  |
|--------------|--------|---|--|--|---|--|
| Model        | Lumens | Volts   | CCT & CRI  | Driver Options   | Lens & Trim Options   | Other Options  |
| MRR-05725    | -2500L | -120<br>-277<br>-97: Other voltage; consult factory | (Blank): 35K, 80+ CRI<br><br><b>80+ CRI</b><br>-27K: 2700°K<br>-30K: 3000°K<br>-41K: 4000°K<br>-50K: 5000°K<br><br><b>90+ CRI</b><br>-27K-HC: 2700°K<br>-30K-HC: 3000°K<br>-35K-HC: 3500°K<br>-41K-HC: 4000°K<br>-50K-HC: 5000°K | (Blank): Standard 0-10V CCR 10% dim<br><br>-D1: 0-10V 1.0% dim | (Blank): White flare trim, regressed prismatic lens<br><br><b>Trim Finishes</b><br>-62T: Clear specular trim instead<br>-BG: BioGard™ anti-microbial white<br>-BKBG: BioGard™ anti-microbial black<br>-94: Custom color; consult factory<br>-94BG: BioGard™ anti-microbial custom color finish<br><b>Other Trim Features</b><br>-32: White trim extender; specify OD<br><b>Lens Options</b><br>-13: .125" clear poly. lens overlay<br>-23: Frosted microprismatic lens<br>-CF: Custom color filter (Rosco); specify<br>-WA: White acrylic (flat) diffuser instead; will produce wide flood distribution | (Blank): None<br><br><b>Mounting</b><br>-79: Extension collar; ceilings up to 2" thick<br><br><b>Other Options</b><br>-99: Special modification; consult factory<br>-AWN: Athena Wireless Node<br>-FS: Fused primary; One per fixture<br><br><b>*Note:</b> For other integrated control solutions, such as nLight, contact factory |

\*See note next page

# Dimensions



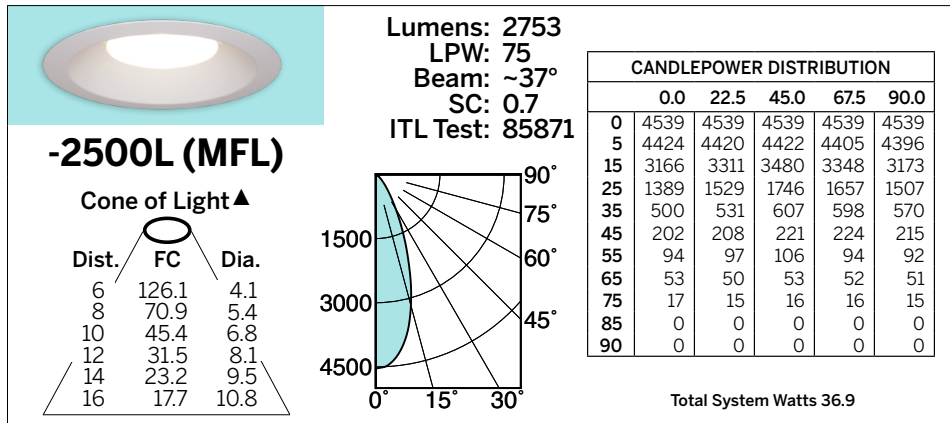
**Ceiling Cut-out**  
6 1/2" Dia.



# Photometry - Installed Complete Fixture

Photometry from I.T.L., Boulder, CO

LM-79 IESNA Certified Photometry from Independent Lab



\*LED manufacturers maintain a tolerance of +/-7% on flux (lumens) and power (electrical) measurements.

▲ **Cone of Light Key**  
Dia. (in ft.) shown is where FC value is half the FC at nadir.

**Dist.** Distance (Ft.) from fixture  
**FC** Footcandles at nadir (0°)  
**Dia.** Circle of light at 50% of FC

LIMITED WARRANTY: CATALOGUED KIRLIN FIXTURES ARE WARRANTED FREE OF DEFECTS IN WORKMANSHIP OR MATERIAL FOR FIVE YEARS FROM DATE OF PURCHASE. INSTALLED TO N.E.C. IN NORMAL USE. Manufacturer at his option will replace or repair such fixture or refund the purchase price on presentation of proof of purchase and defective fixture at the offices of manufacturer within five years of original shipment. Liability of manufacturer is limited to the foregoing and manufacturer shall not be liable for any other damages, direct or indirect, sustained or suffered by purchaser or any person. This warranty is applied to the buyer in place of all other warranties, expressed or implied. Seller does not warrant as to merchantability or fitness for a particular use, nor will any oral statement constitute a warranty. Abnormal use, abuse of the fixture, improper installation, or repair or modification of the fixture without prior written authorization from the manufacturer will render the warranty void. PATENT SPACES NOVEMBER 2024