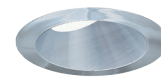


CATALOG #	TYPE
JOB NAME	VOLTAGE

RADIANCE™ 4" Round Wall Wash Tunable† White LED • 1650-8000 CCT

†Circadian Rhythm Automated Control Versions Available
(See Option -LWC)

MRR-04756-1300L



Up to 50,000 Hour Life
Lensed / Open
Appearance

Specifications

Delivered System Performance*

- Lumen Series:
 - 1300L: 1300 nominal lumens.
- 30 watts nominal power consumption.
- Center beam optics positioned at 33°.
- aray5 Logic Module (ALM) - Included**
- <2 MacAdam ellipse color consistency over 50,000 hours.
- On board thermal turndown.
- Inline spectral capture and storage gives consistent CRI and CCT across all arrays.
- Scene set (by others) allows up to 5 scenes to be pre-programmed and recalled using either 0-10V dimmer or Bluetooth.

Dimming & Color Control Interface Included (Also see Options):

- 0-10V with Bluetooth BLE included or see Options. Dims to 1%.

5 Color LED Array

- Tunable range: 1650 - 8000°K.
- CRI: 90+ standard.
- Dimmable to 1% at constant CCT
- L70 of 50,000 hours.

LED Power Supply - INTERNAL

- 120-277V / 50-60Hz input. Load insensitive.
- Suitable for outdoor / indoor use: -30°C (-22°F) to 50°C (122°F)..

Trim (Also see Options)

- Low brightness clear Softex™ aluminum self-flanged angle cut cone with tempered micropismatic glass lens above.

Acrylic Enameled Aluminum Housing

- Rustproof and corrosion resistant: Exceeds 1000 hour ASTM 5% salt spray test.
- Shallow depth fits restricted plenums.
- Cool operation: Extends life of all components.
- Fully sustainable: Entire luminaire, including LED light engine, is modular, easily visible and serviced through aperture.
- Built-in plaster flange.

Outlet Box

- UL listed J-box with insulated removable cover. Prewired 14 GA (NEC) with ½" and ¾" knockouts.

Installation

- Recess indoor or outdoor.
- Accommodates ceilings up to 1-1/8" thick.
- Compatible with fire rated enclosures (by others).
- 27" galvanized hanger bars with adjustable mounting brackets (2) supplied.

UL, C-UL (Canada) Listings

- Wet, damp or dry locations, covered ceilings.
- Type Non-IC: Not for direct contact with insulation.
- Through-branch conductors (4 #12 AWG 90°C).

IEC & FCC Compliance

- Meets IEC/EN 61000-3-2 electromagnetic compatibility standard.
- FCC Part 15 certified for EMI/RFI emissions.

5
year

FIVE YEAR

Limited Warranty

- Complete standard fixture.

MUST SPECIFY	OPTIONAL		Ordering Example: MRR-04756-1300L-DMX
Product Number	Dimming & Color Control Options	Options	
MRR-04756-1300L	-DMX (DMX512A-RDM) -LWC (Legrand Wattstopper)	See "Options" below	

Options

Input Power

- 97 Specify other voltage. Consult factory.

Dimming & Color Control Interface: Specify One (Controls by Others)

- DAL For DALI system controls. Consult factory.
- DMX For DMX512A-RDM controls. Dim to black.
- ECO For Lutron EcoSystem controls. Dim to black. Consult factory.
- LWC For Legrand Wattstopper controls. Dim to black.

Trims

- 30 All white acrylic enameled trim.
- 31 White acrylic enameled trim flange.
- 32 White oversize trim ring. Specify O.D.
- 37 Dark Bronze acrylic enameled trim.
- 38 Black acrylic enameled trim.
- 37F Dark Bronze acrylic enameled trim flange.
- 38F Black acrylic enameled trim flange.
- 45 Gasket between trim flange and ceiling.
- 62 Clear specular self-flanged trim.
- 94 Custom color/finish. Specify. Consult factory.

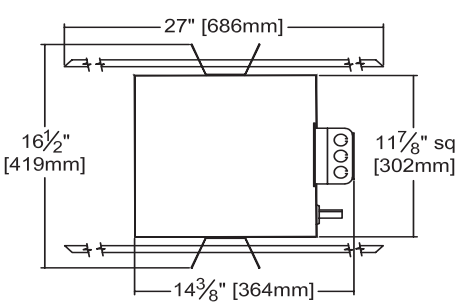
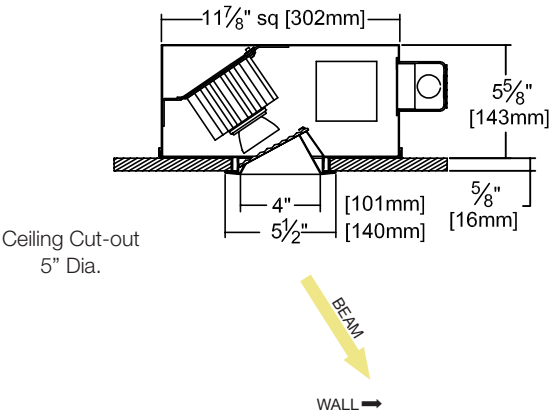
Other

- 79 Extension collar for ceilings up to 2" thick.
- 99 Special modification. Consult factory.
- FS Single in-line fuse.
- SH Sealed housing and junction box.

Also see
MCD-04010
for 0-10V
wall control



Dimensions



Detailed Photometry - Installed Fixture

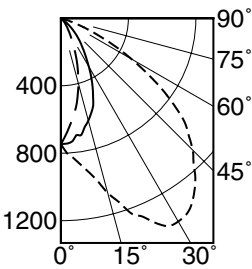
Photometry from I.T.L., Boulder, CO

Photometric testing done in accordance with IESNA LM-79

Lumens: 1271
LPW: 33
Efficiency: 63.6%
ITL Test: 91526



Total System Watts 38.5



DISTANCE FROM CEILING IN FEET	SINGLE FIXTURE					MULTIPLE FIXTURES					
	1'	2'	3'	4'		2' CENTERS	3' CENTERS				
	FIXTURE INSTALLED 2' FROM WALL Footcandle Distribution on Wall Surface										
1	58.4	19.2	1.8	0.7	0.4	63.3	63.4	63.4	60.6	13.0	60.5
2	99.1	59.2	16.2	2.8	0.6	133.8	133.9	133.8	105.6	68.7	105.5
3	59.5	40.9	18.6	6.6	1.8	100.3	100.4	100.4	73.6	59.0	73.6
4	31.5	24.5	13.9	6.7	2.9	66.5	66.5	66.5	45.9	42.1	45.9
5	16.8	14.6	9.8	5.6	3.0	44.2	44.3	44.3	29.3	29.3	29.3
6	9.8	8.9	6.8	4.4	2.7	31.6	31.6	31.6	21.0	20.9	21.0
7	6.2	5.8	4.8	3.5	2.3	23.7	23.8	23.8	15.6	15.7	15.6
8	4.3	4.1	3.6	2.9	2.0	19.1	19.1	19.1	12.4	12.6	12.4
9	3.3	3.2	2.9	2.4	1.8	16.2	16.4	16.4	10.6	10.7	10.6

Multiplier Values
(non-dimmed)

Tested with
circadian module
set at 3500°K

CCT	LUMEN FACTOR	WATTAGE FACTOR	LPW FACTOR
1650	0.550	0.651	0.84
2000	0.724	0.739	0.98
2500	0.947	0.900	1.05
3000	1.004	1.007	1.00
3500	1.000	1.000	1.00
4000	0.984	0.992	0.99
4500	0.972	1.006	0.97
5000	0.950	1.021	0.93
5500	0.905	0.974	0.93
6000	0.839	0.884	0.95
6500	0.782	0.834	0.94
7000	0.723	0.793	0.91
7500	0.680	0.765	0.89
8000	0.641	0.739	0.87

LM-79 Certified Photometry

* LED manufacturers maintain a tolerance of ±7% on flux (lumens) and power (electrical) measurements. Kirlin photometrics are actual test data from Independent Testing Laboratories (ITL) where photometry was measured from 2000 lumen (-1300L) light engines (within the established tolerance).

SUBMITTAL DATA

APPROVAL STAMP

JOB NAME

TYPE

VOLTAGE

CATALOG NUMBER

