

CATALOG #	TYPE	
JOB NAME	WATTAGE	VOLTAGE

SmartLED™ MRI Lighting System

4" Lensed Wall Wash

Up to 60,000 Hour Life • Type IC

LM-80 Qualified • LM-79 Certified Photometry

Specifications

Delivered System Performance

- Lumens: **-2500L** (35W); 2500 nominal lumens
- Color temperature: 3500°K standard; optional: -27K, -30K, -41K, or -50K
- CRI: 80+ standard; optional: -HC (90+)
- 60,000 hour life (L70)
- Fully sustainable: removable for servicing
- Center beam optics positioned at 20°

Thermal Management System

- Aluminum heat sink and components for cool operation, long life, and low maintenance

SmartLED™ MRI Lighting System Required

- Kirlin remote driver modules, cabinet, and RFI filters required for operation
- Components ordered separately, see below for driver information and **MRI-CABNT** for additional components
- The **MRI Configurator** can help determine the necessary components
- SmartLED driver modules provide 0-10V dimming to 0.38%

SmartLED™ Emergency Backup System

- **EMI-21220** or **EMI-03120** available for emergency power
- See specification sheet; order separately

Trim and Lens Assembly

- Clear specular aluminum self-flanged, low glare cone with lens above
- Optional colors and finishes available

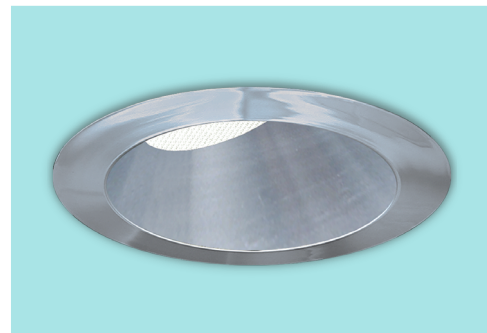
Acrylic Enameled Aluminum Housing

- Rustproof and corrosion resistant: exceeds 1000 hour ASTM 5% salt spray test; all components fully sustainable
- Shallow depth for restricted plenums
- Cool operation extends component life
- Modular design; visible and fully serviceable through aperture
- Built-in plaster flange

Outlet Box (Aluminum)

- UL listed J-box; prewired with ½" knockouts

MRR-04418



Installation & Hardware

- Requires minimum 18 AWG twisted pair shielded wire from SmartLED™ MRI Lighting System to fixtures
- Recesses in ceilings up to 1-1/8" thick
- Aluminum 27" hanger bars with adjustable mounting brackets (2) supplied.

UL, C-UL (Canada) Listings

- Wet, damp or dry locations, covered ceilings
- Type IC: for direct contact with insulation

IEC & FCC Compliance

- FCC Part 15 certified for EMI/RFI emissions

FIVE YEAR Limited Warranty

- Complete fixture, must be installed with all SmartLED™ components

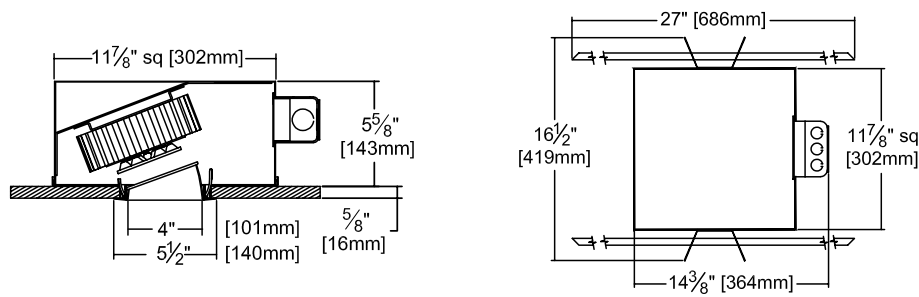


Options and Ordering Configuration

(Example: MRR-04418-2500L-30K-94)

Must Specify		Optional		
Model	Lumens	CCT & CRI	Trim & Lens Options	Other Options
MRR-04418				
	-2500L	(Blank): 35K, 80+ CRI	(Blank): Clear specular aluminum self-flanged cone with lens above	(Blank): None
		80+ CRI	Trim Finishes	Other Options
		-27K: 2700°K	-30T: All white acrylic enameled cone	-99: Special modification; consult factory
		-30K: 3000°K	-30F: White acrylic enameled cone flange	
		-35K: 3500°K	-70T: SofTex™ semi-specular clear self-flanged cone	
		-41K: 4000°K	-BGT: BioGard anti-microbial white	
		-50K: 5000°K	-BKBG: BioGard anti-microbial black	
		90+ CRI	-94: Custom color; consult factory	
		-27K-HC: 2700°K	-94BG: BioGard anti-microbial custom color finish	
		-30K-HC: 3000°K	Other Trim Features	
		-35K-HC: 3500°K	-32: White trim extender, specify OD	
		-41K-HC: 4000°K	-45: Gasket between trim flange and ceiling	
		-50K-HC: 5000°K	Lens Options	
			-LL: Tempered glass lens converts beam to oval	

Dimensions

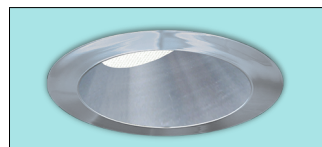


Ceiling Cut-out
5" Dia.

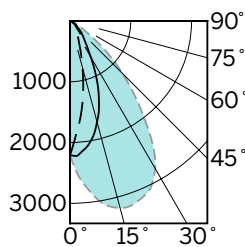
Photometry - Installed Complete Fixture

Photometry from I.T.L., Boulder, CO

LM-79 IESNA Certified Photometry from Independent Lab





-2500L



WALL > --- 0°
 --- 90°
 --- 180°

Lumens: 2560
LPW: 76
ITL Test: 90487

DISTANCE FROM CEILING IN FEET

SINGLE FIXTURE					MULTIPLE FIXTURES					
1'	2'	3'	4'		2' CENTERS			3' CENTERS		
										
FIXTURE INSTALLED 2' FROM WALL										
Footcandle Distribution on Wall Surface										
23.9	9.8	2.4	1.2	0.8	33.5	33.6	33.5	27.5	12.0	27.4
109.1	50.8	11.6	3.2	1.2	61.6	61.7	61.7	117.3	54.1	117.2
106.2	68.3	21.9	6.1	2.2	58.5	59.2	59.1	120.3	84.2	120.3
68.5	55.0	25.3	9.1	3.4	46.2	46.3	46.3	88.6	85.2	88.6
41.5	36.7	22.2	9.9	4.4	35.7	36.1	36.1	63.7	67.7	63.7
26.4	24.3	17.3	9.4	4.7	28.5	28.6	28.5	48.9	50.7	48.9
17.8	16.8	13.1	8.4	4.7	23.2	23.5	23.5	38.9	39.1	38.6
12.8	12.3	10.2	7.3	4.5	19.9	20.3	20.3	31.6	31.7	31.6
10.2	9.8	8.4	6.5	4.4	17.6	17.9	17.9	27.3	27.9	27.3

Total System Watts 33.9

*LED manufacturers maintain a tolerance of +/-7% on flux (lumens) and power (electrical) measurements.

SmartLED™ MRI Driver Modules

Fully Digital Controlled Power Source for LED Luminaires

Mounted in Kirlin's **MRI-CABNT**

Drivers wired in series



Driver Module	Maximum Capacity	Fixture Load Example
DVR-1400A	Qty 1: 2500L Luminaire	• Qty 1: MRR-04418-2500L
DVR-1400B	Up to Qty 2: 2500L Luminaire	• Qty 2: MRR-04418-2500L • Qty 1: MRR-04418-2500L and Qty 1: MRR-04416-2500L